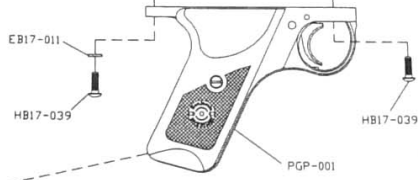
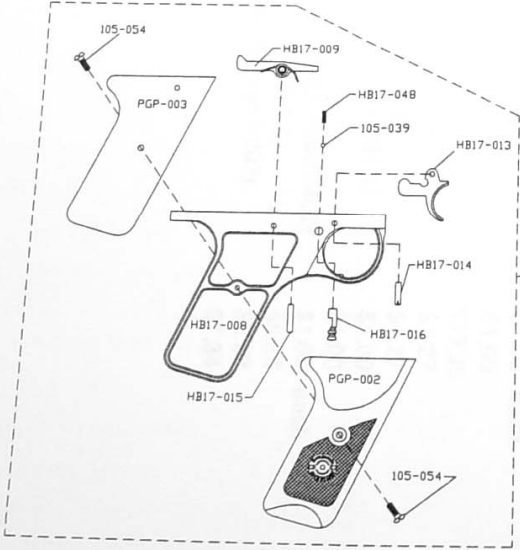
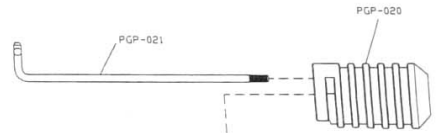
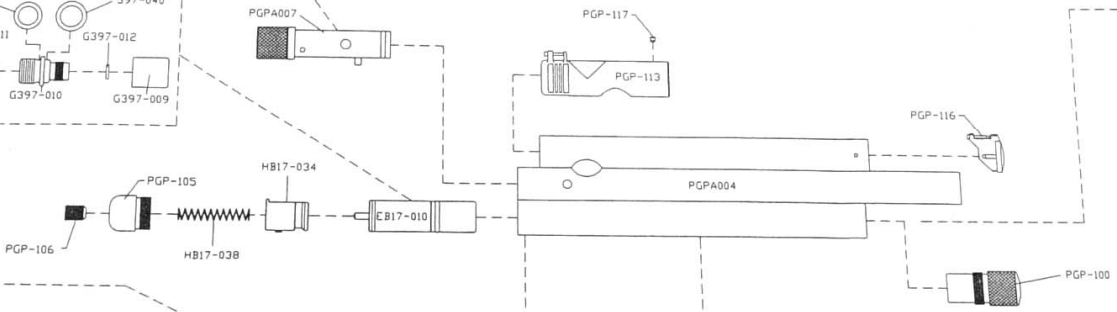
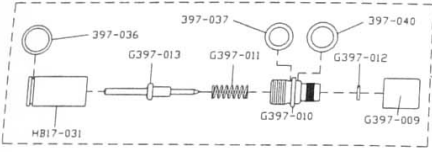
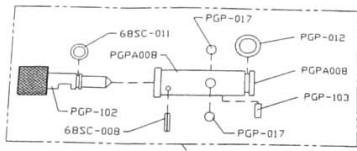


EVP FOR MODEL PGP
DATE 6/00



MODEL PGP2
PARTS AND PRICE LIST
START MANUFACTURE FEBRUARY 2001

<u>PART NUMBER</u>	<u>QTY PER</u>	<u>PART NAME</u>
105-039	1	SAFETY DETENT BALL
105-054	2	GRIP SCREW
397-036	1	O-RING
68SC-008	1	BOLT BALL LOCK RETAINING PIN
68SC-011	1	BOLT BALL LOCK O-RING
EB17-010	1	VALVE ASS'Y
EB17-011	1	LOCK WASHER (was VMS-103)
G397-009	1	INLET VALVE BODY
G397-010	1	PEIRCING STEM GUIDE
G397-011	1	EXHAUST VALVE SPRING
G397-012	1	CHAMBER FACE PLUG (was F504)
G397-013	1	PEIRCING STEM
G397-040	1	STRIKER
HB17-008	1	GRIP FRAME
HB17-009	1	SEAR ASS'Y
HB17-013	1	TRIGGER (was E614)
HB17-014	1	TRIGGER PIN (was E615)
HB17-015	1	SEAR PIN (was E620)
HB17-031	1	EXHAUST VALVE BODY
HB17-034	1	STRIKER ASS'Y (was EX601)
HB17-038	1	MAIN SPRING (was E602)
HB17-039	2	FRAME SCREW (was E306)
HB17-048	1	SAFETY SPRING
PGP-001	1	FRAME ASS'Y
PGP-002	1	R.H. GRIP (was 10045)
PGP-003	1	L.H. GRIP (was 10046)
PGP-012	1	BREECH SEAL (was K401-1)
PGP-016	1	SCREW
PGP-017	2	BOLT DETENT BALL (was P402)
PGP-020	1	FOREARM (was P801-2)
PGP-021	1	FOREARM ROD (was P802)
PGP-100	1	KNOB

Manuals provided by: <http://www.mcarterbrown.com>