

- 1-3 USB Driver Installation Steps**
- 4 Flash Utility Software Installation Steps**
- 5 Upgrade Software Storage Steps**
- 6-8 Using the Flash Utility Software**

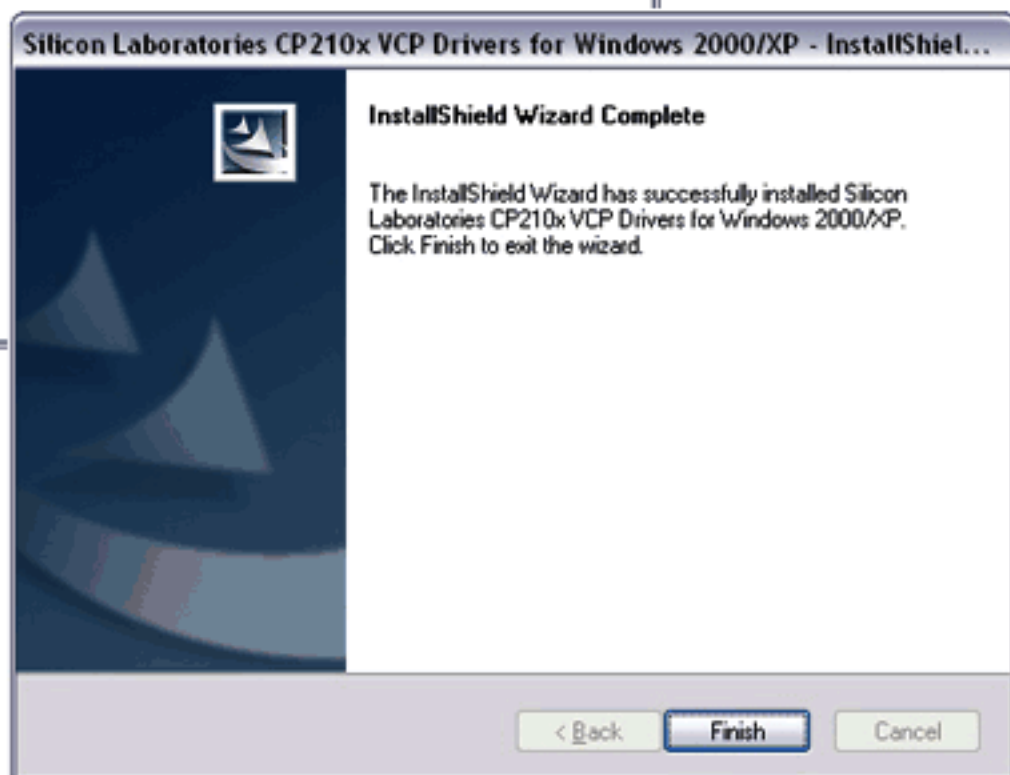
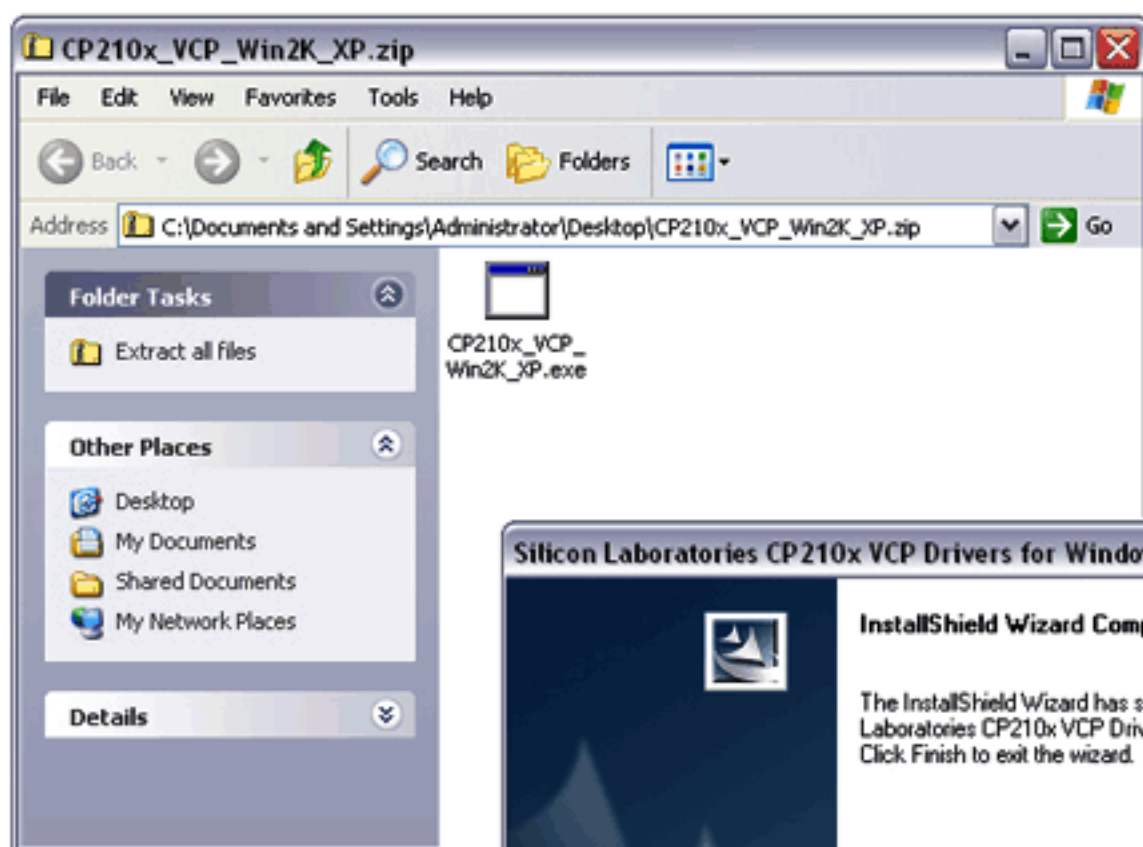
This software will only run on Windows 2000 or Windows XP that has Service Pack 2 installed.

Once a software upgrade is downloaded onto your Angel One it will revert to factory default settings.



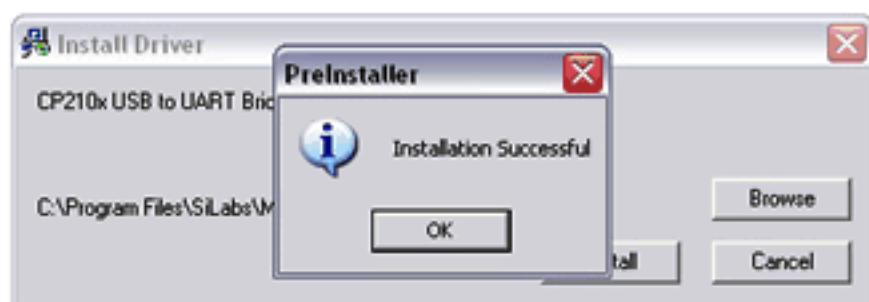
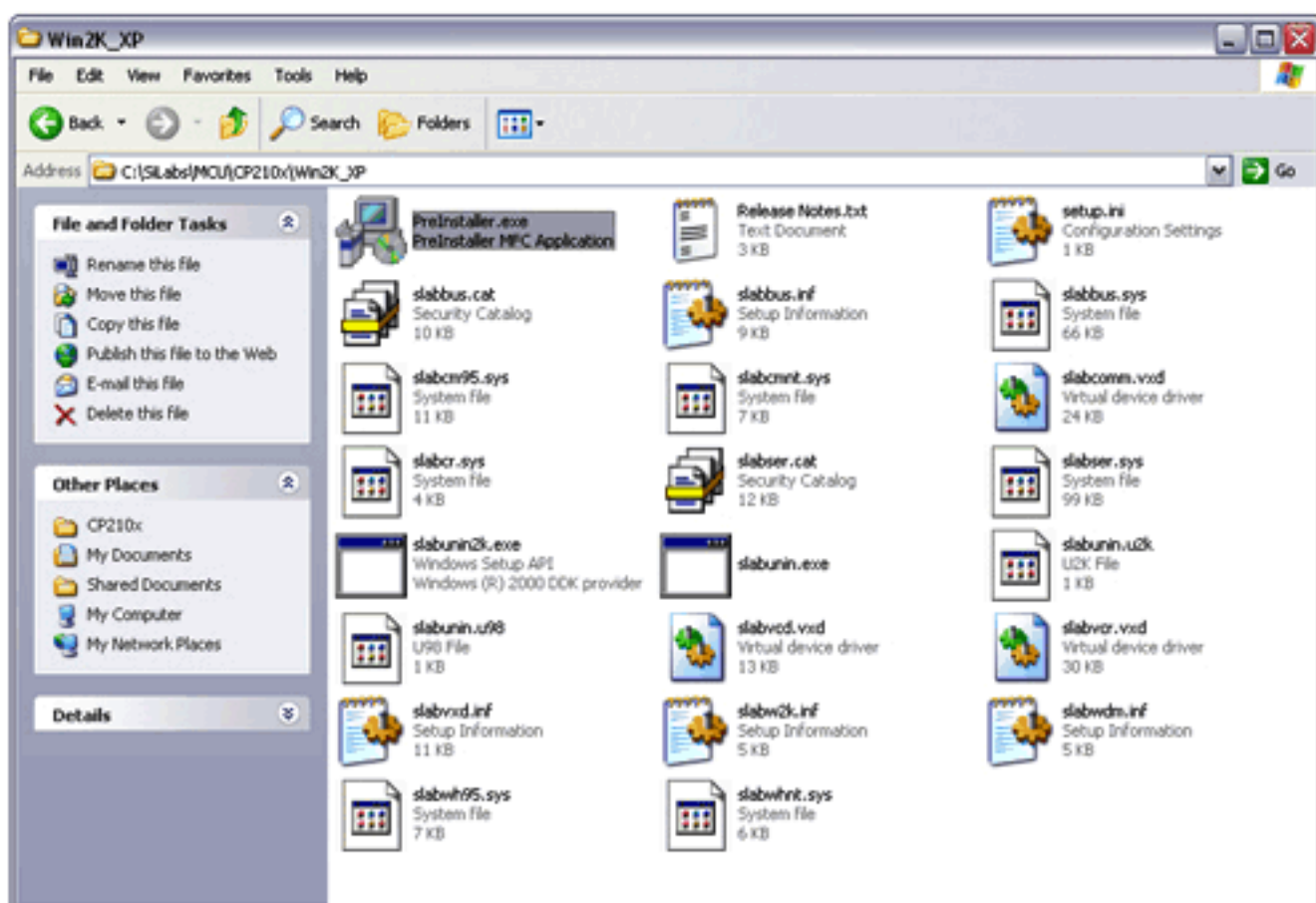
CP210x_VCP_
Win2K_XP.zip

Open the *CP210x_VCP_Win2K_XP .zip* file and begin the installation of the USB Driver by double clicking on the *CP210x_VCP_Win2K_XP .exe* file and follow the on screen instructions



**All installed files will be located in folder
*C:\SiLabs\MCU\CP210x\Win2K_XP***

Go into the **C:\SiLabs\MCU\CP210x\Win2K_XP** folder and install the USB Driver by double clicking on the **Prelnstaller .exe** file and follow the on screen instructions



Now connect to your PC an appropriate USB Lead.

Switch your Angel One on.

Connect your marker to your PC via the USB Lead.

When the PC first detects the USB device, it may look for the installed USB Driver.

If so point the wizard to the **C:\SiLabs\MCU\CP210x\Win2K_XP** folder.

Once completed the Driver will be fully installed and detected.

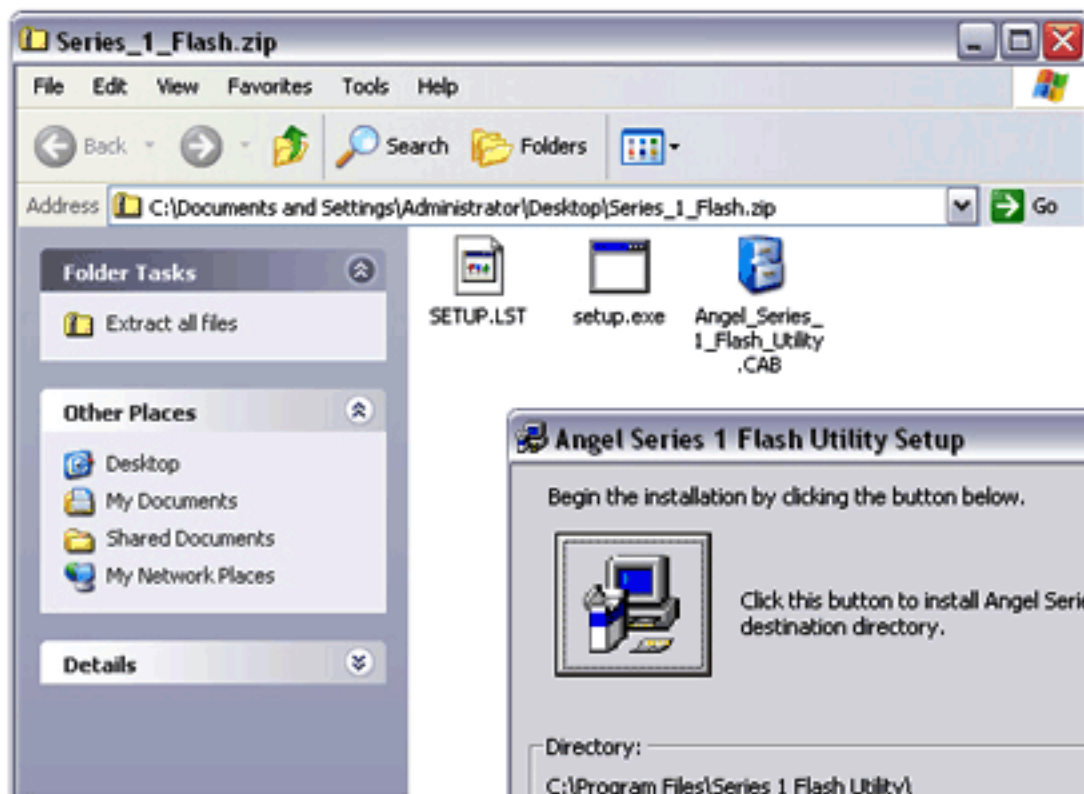
Switch off your Angel One and disconnect from the USB lead.





Series_1_Flash.zip

Open the .zip file and begin the installation of the Flash Utility Software by double clicking on the *setup.exe* file and follow the on screen instructions.



The Flash Utility has now been fully installed and a shortcut for it can now be created on your Desktop.



Angel Series 1
Flash Utility

Create a folder on your desktop called **Angel 1 Software**, this will help ensure that all relevant future upgrades are stored in the same place.



Angel 1
Software

All previous instructions only need to be completed once and do not need to be repeated whenever the Angel One software is upgraded.

Place the latest upgrade software into the **Angel 1 Software** folder.
(file name will vary from image shown)



SeriesA_v1_4.SR1

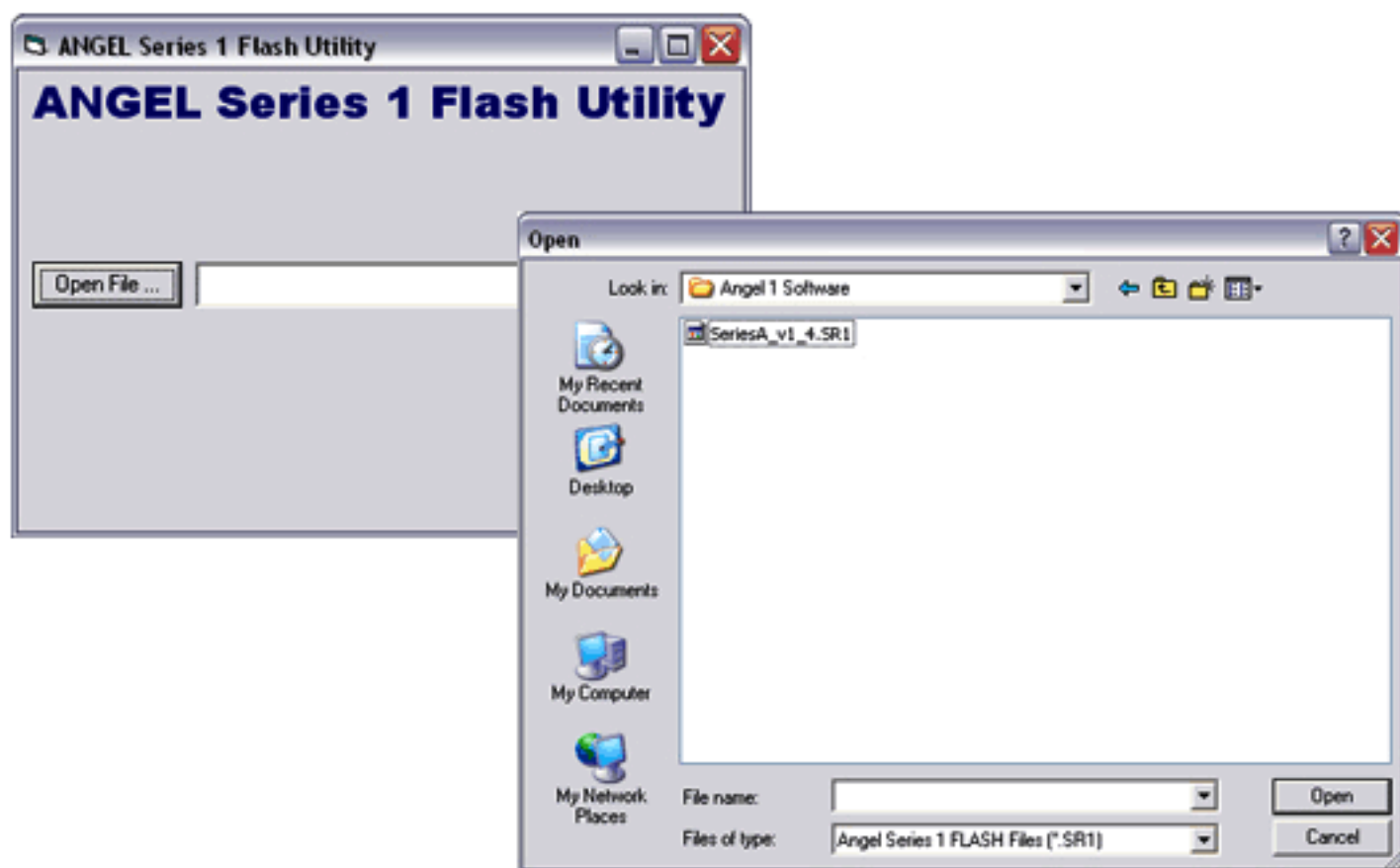
After following these and the previous steps, everything will be in place to upgrade the Angel One's software version by using the **Flash Utility**.



Angel Series 1
Flash Utility

Double click on the **Angel Series 1 Flash Utility** Shortcut on your Desktop.

Open the latest upgrade version from the **Angel 1 Software** folder.

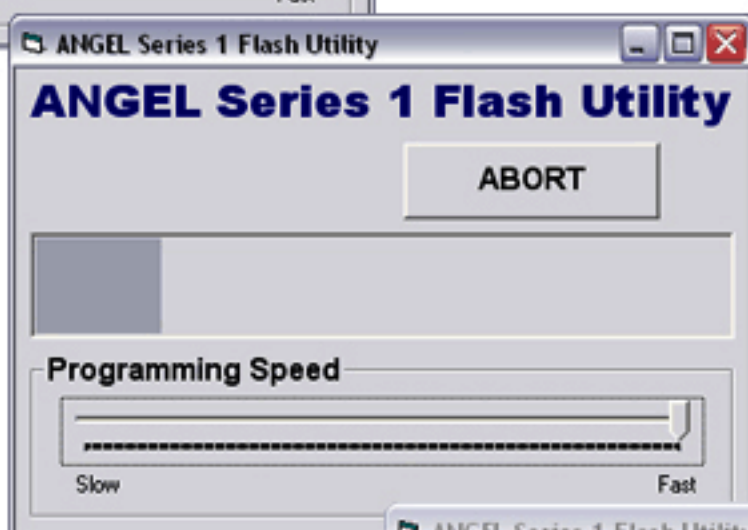


Switch on your Angel One and connect to your PC
via an appropriate USB lead when prompted.



Select a **Programming Speed** that best matches the performance of your PC by sliding the arrow left or right.

Click the **Flash** button to begin the Electronics Upgrade and the LED on the rear of the grip frame will flash orange and blue.



The Angel One will **'beep'** when finished upgrading.

**Disconnect your Angel One from the USB lead
and switch off when prompted.**



Your Angel One's Software has now been upgraded.

**To check your software version simply enter the *Information* menu
on the Angel One and the *Software Version* is the first setting to be displayed.**