

# WARSENSOR ZEUS+ SERIES PAINTBALL MARKER

## OWNER'S MANUAL



## WARNING

**WARSENSOR PAINTBALL MARKERS ARE NOT A TOY. ANY MISUSE MAY CAUSE SERIOUS INJURY OR DEATH. THE USER AND ANY PERSON WITHIN RANGE MUST WEAR EYE PROTECTION DESIGNED FOR PAINTBALL USE. READ THIS OWNER'S MANUAL COMPLETELY BEFORE LOADING, PRESSURIZING, OR OPERATING YOUR WARSENSOR PAINTBALL MARKER.**

This paintball marker is intended for sale to adults only, for use in compliance with all applicable laws and regulations. Adult supervision is recommended at all times whenever a minor is handling this paintball marker. All persons within range **MUST** wear protective goggles & headgear specifically designed for paintball when a paintball marker is in use. Paintball safety rules must be followed at all times.



## Table of Contents

### CHAPTER 1

<b>Paintball Safety Rules</b>	<b>1</b>
<b>Trigger Safe Switch</b>	<b>2</b>
<b>Operating Instructions</b>	<b>3</b>
<b>Compressed Air/Gas</b>	<b>5</b>
<b>CO2 Safety</b>	<b>8</b>
<b>Velocity Adjustment</b>	<b>10</b>

### CHAPTER 2

<b>ZEUS Series Marker Specifications</b>	<b>12</b>
<b>Parts &amp; Diagram</b>	<b>13</b>
<b>Parts &amp; Diagram G2</b>	<b>15</b>
<b>Maintenance &amp; Lubrication</b>	<b>17</b>
<b>Cupseal Maint.</b>	<b>21</b>
<b>G2 Barrel Swap</b>	<b>25</b>

### CHAPTER 3

<b>Troubleshooting</b>	<b>26</b>
<b>Tips, Hints 'n Tricks (from our forum)</b>	
<b>Warranty Info.</b>	<b>30</b>

This owner's manual is provided with several models of the ZEUS series paintball marker. Ai-Mok Paintball Ltd. reserves the right to modify or change its markers without incurring any obligation to incorporate such modifications or changes in any of its products that were sold prior to the modification. The information in this owner's manual may be updated or changed without notice.

This owner's manual is intended to remain with the paintball marker upon any subsequent transfer of the marker, whether through sale, resale, or furnishing in any manner.



## Paintball Safety Rules

# *Safety First!*



### **!** WARNING

**WARSENSOR PAINTBALL MARKERS ARE NOT A TOY. ANY MISUSE MAY CAUSE SERIOUS INJURY OR DEATH. THE USER AND ANY PERSON WITHIN RANGE MUST WEAR EYE PROTECTION DESIGNED FOR PAINTBALL USE. READ THIS OWNER'S MANUAL COMPLETELY BEFORE LOADING, PRESSURIZING, OR OPERATING YOUR WARSENSOR PAINTBALL MARKER.**

- Always wear protective goggles & headgear designed for paintball when shooting this marker
- Everyone within range of an area where this paintball marker is used should wear protective goggles and headgear specifically designed for paintball
- Operate this paintball marker only in areas where it is safe and lawful to do so
- Misuse of this marker may result in criminal charges or imprisonment
- This marker is intended for sale to adults. Adult supervision is recommended at all times whenever a minor is handling this marker
- **READ THIS OWNER'S MANUAL COMPLETELY BEFORE LOADING, PRESSURIZING, OR OPERATING THE WARSENSOR MARS SERIES PAINTBALL MARKER!**
- Never aim or shoot this paintball marker towards anybody who is not wearing protective goggles or headgear specifically designed for paintball
- During game play, follow referee's instructions and all field safety rules. Avoid shooting at another player's head, neck or groin area
- Play paintball only where the rules of safety for paintball are followed
- All paintball markers must be chronographed regularly. Adjust the marker to shoot paintballs at a velocity this is 300feet per second (fps) or less and that does not exceed the velocity limit set by

the Paintball Park or field where the marker is in use. Chronograph the marker at regular intervals during the day, as well as any time the power source is refilled or changed, any time the barrel or any part of the power system is changed, and upon request of any player or game official

- This paintball marker operates using compressed gas or air at specified pressure ranges. Follow safety procedures when handling compressed gas or air. All filling of compressed gas or air cylinders must be done by qualified persons
- Follow the rules of safe marker handling: keep finger off the trigger until ready to shoot. Keep muzzle pointed in a safe direction. In addition, firmly insert a barrel plug into the muzzle and push the mechanical or electronic safety to "ON" or "SAFE" when the marker is not in use and when in any non-shooting area
- Never shoot at domestic animals or wildlife
- Never mark objects outside the confines of the game or authorized shooting areas
- Never look down the barrel of a marker
- Before disassembly, storage, or transport of this marker, remove ALL paintballs from the marker, barrel, and loader; remove power source; and remove all gas or air from the power system. Insert a barrel plug and put the safety "ON"
- Carry your marker in a case or sturdy bag when transporting it in public
- Safely and securely store marker to prevent access to it by unauthorized persons or minors.

## MARKER SAFETY SWITCH (ON TRIGGER FRAME)



## Operating Instructions

### **WARNING**

Every person within range of this paintball marker must wear protective goggles and headgear specifically designed for paintball.

1. Before continuing with these instructions please refer to the section in Chapter 2 on maintenance and lubrication (pg 16). Your marker should first be properly cleaned internally & lubricated prior to firing to avoid unnecessary wear or damage on the internals. After completing that task, return to this section and continue with step 2.
2. Make sure the safe switch is in the SAFE position. Press the button on the trigger frame to the right for SAFE ON, and to the LEFT (red ring should be visible on the button) for SAFE OFF.
3. At this time do not attach power source, clip/hopper adapter, and do not load any paintballs into the marker.
4. Insert barrel plug firmly into the barrel.
5. Pull the cocking handle (back of marker body as illustrated) straight back until the cocking mechanism locks back in the cocked position



- Turn the safety switch to the FIRE position and then squeeze the trigger with an even pressure. The cocking knob should snap forward into the un-cocked position. You have just dry-fired your WARSENSOR marker. Do this a few times until you are comfortable with this operation and the feel of the marker when cocking, and firing it.
- Using the supplied hex-wrench make certain to properly tighten all screws on your marker. These include the trigger frame and bottom line if you have outfitted your ZEUS with that upgrade module. Do not overtighten and take care not to strip ANY of these screws.
  - Attach the ammo/ball clip to the top of the marker. Depending on how your clips are configured they may insert differently. The WARSENSOR clips insert by sliding the front section of the clip into the milled groove at the top-front section of the receiver body. Apply a slight forward pressure and snap the rear section of the clip into place (see illustration below).
  - If your clip inserts from the rear, simply repeat the process but this time insert the clip into the rear groove at the top of the receiver body, while pulling the other retainer clip back slightly with your fingers so it snaps into position



## Compressed Air/Gas

### **WARNING**

The power system contains compressed gas or air when pressurized. Never disassemble the marker until removing ALL the gas or air from the power system. Always keep hands away from escaping CO2 gas. It can cause frostbite if allowed to come in contact with skin.

- Before attaching any air or gas power source, read and understand this section of the owner's manual. Follow safety rules for handling compressed air/gas. If any leaks occur in the power system, refer to troubleshooting section or WARSENSOR support. Use only cylinders for compressed gas or air that comply with all applicable laws and regulations, including but not limited to those of the US dept of transportation, OSHA, Compressed Gas Association and/or American Society for Testing and Materials.
- **CO2 CARTRIDGE:** Small 12gr. CO2 cartridges are inserted into the front of the marker body, just below the barrel and secured into place with a retainer cap. As the cap is tightened, it presses the CO2 cartridge against a specialized activation pin – which punctures the cartridge head, and starts the flow of CO2 into the marker. The CO2 cartridge delivers approximately 22 shots.



- **BOTTOM LINE:** The power source is attached by screwing the threads of the tank or power source adapter into the threaded bottom line ASA at the base of the grip or on the drop forward. **THE WARSENSOR ZEUS BOTTOM LINE KIT IS REQUIRED!** There is a model for CO2 and one for HPA that can be added to the marker depending on your power source preference.



- When cocking the pressurized marker do not release the cocking knob until after the cocking mechanism has locked back into the cocked position. The marker is now ready to fire.
- Test for function – now that the power source is loaded and the marker cocked, flip the safety switch to the FIRE position and squeeze the trigger. The marker should shoot air, and the cocking knob should cycle back to the cocked position ready to fire again. Repeat this several times to get used to the recoil action of the marker. You have now fired your marker WITH loaded power source.


The WARSENSOR paintball marker may be powered by CO2, regulated compressed air (HPA), or regulated nitrogen. From the source of gas or air



through the entire power system, there are varying pressures that are applied to the marker and the components of the power system.

The marker requires a minimum of 450psi for proper operation

If you are using HPA please ensure that the HPA bottle regulator output is at least 550 PSI.

 **WARNING:** Keep hands away from escaping CO<sub>2</sub> gas. It can cause frostbite if allowed to come in contact with skin. If the CO<sub>2</sub> source you are using has an on/off valve, make sure it is in the "OFF POSITION" before attempting to remove it from the paintball marker. Do not expose the CO<sub>2</sub> source to heat or store the CO<sub>2</sub> source at temperatures above 130°F (54°C). Always follow the manufacturer's warnings listed on the CO<sub>2</sub> source for handling and storage.

## SAFETY RULES FOR HANDLING COMPRESSED AIR OR GAS MUST BE FOLLOWED AT ALL TIMES!

### OPERATING PRESSURES AND INPUT PRESSURE

- Operating pressure range 450 p.s.i. to 900 p.s.i. (Although some markers have been known to operate at pressures as low as 330 p.s.i. or pressures over 1100 p.s.i. it is recommended that the specified operating pressure of the WARSENSOR marker be used in order to avoid problems.)
- Never exceed recommended pressures, as this may be dangerous to you and damaging to the marker.
- Do not leave a pressurized marker or cylinder in direct sunlight or exposed heat source. Increased temperatures will increase the internal pressure of the compressed gas or air and could cause problems.

### NOTES FOR BOTTOM LINE ADAPTED ZEUS PISTOL MARKERS ONLY!

#### VALVE CYLINDER CONNECTION

The Valve on a cylinder is to remain screwed into the cylinder. Should it loosen, the cylinder may detach from the valve with an extremely dangerous force.

- Every time a cylinder is filled, the connection between the valve and cylinder must be inspected. If any looseness or leak is detected between the valve and the cylinder, do not fill. Drain the cylinder and have it inspected by qualified persons.
- During filling if any looseness or leak is detected between the valve and the cylinder, filling should be stopped and the cylinder should immediately be drained to avoid problems.

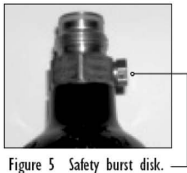


Figure 5 Safety burst disk.

#### FILLING COMPRESSED AIR/GAS

- An overfill of any compressed air or gas cylinder can cause the safety burst disk on the cylinder to rupture. A cylinder may rupture with excessive force. Use properly rated disk only for the burst disk.
- A scale must be used for ALL CO2 fills to prevent an overfill. A pressure gauge must be used for all compressed gas or air fills to prevent overfills.

- Many cylinders are required to have US Department of Transportation hydrostatic tests done at periodic intervals. This interval varies depending on the cylinder type. The date of the cylinder's initial or last testing appears on the cylinder. Out of date cylinders should not be used.
- Installing the Gas/Air Power Source
  - Make sure the BARREL PLUG is placed in the barrel
  - Put the trigger frame on SAFE
  - Screw the compressed air/gas source into the ASA Bottom line Adapter
  - Tighten until you feel a solid stop
  - Turn the gas/air on if it has an on/off valve, otherwise it should be active and ready to go.
  - Do not store the marker with power source installed and full
- Removing the Gas/Air Power Source
  - Always remove power source before performing disassembly of marker
  - Unload all paint from the marker and detach the hopper/loader
  - Put the trigger frame on SAFE,
  - Slowly unscrew the CO2 Cartridge retainer cap to release remaining CO2 pressure, discard the canister once empty.
- IF USING A BOTTOM LINE CONTINUE BELOW
  - If the power source has an on/off valve – shut it OFF. Otherwise point the marker in a safe position and slowly unscrew the power source.
  - You will hear some compressed gas/air escaping via a bleed-hole while unscrewing the power source. If you prefer you can fire the marker to release ANY pressure in the system, while continuing to unscrew the power source.
  - If the unscrewing is difficult the system still has too much pressure in it – check to make sure the power source is OFF (if it has an on/off valve), or to ensure it is completely discharged before continuing. CO2 can cause damage to O-rings. These need to be inspected regularly to avoid leaks.

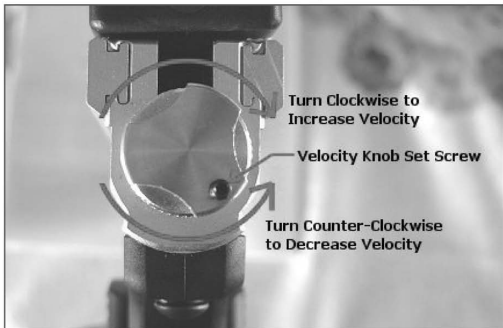
## Velocity Adjustments

### **WARNING**

All paintball markers must be chronographed regularly. Adjust marker to shoot paintballs at a velocity that is 300 feet per second (fps) or lower. Make sure the velocity setting is not in violation of the limit set by the authorities of the location where you are playing.

Chronograph the marker at regular intervals during the day as well as any time the power source is refilled or changed or any time a player or game official requests.

- The velocity knob is located at the back on the receiver (marker body). On the WARSENSOR ZEUS marker this velocity adjuster can be turned by hand easily once the locking retainer screw is loosened.
- The illustrations below show how to adjust the velocity screw.



To adjust velocity after loosening the locking retainer screw, turn the velocity screw clockwise in  $\frac{1}{2}$  turn increments. To decrease velocities turn the velocity screw counter-clockwise. Once the desired velocity has been reached, lock the velocity screw in place.

- Note: velocity may fluctuate depending on factors such as altitude, type of power source used, and climate conditions. Before using your marker make sure to perform a safe velocity test.
- Use a chronograph and let's ensure we are within the safely allowable velocity range. Velocity should NEVER exceed 300 f.p.s. Some paintball fields may require your marker to be set under 300 f.p.s.

Once you have achieved the proper velocity setting – you can lock it in place with the Velocity Locking Screw.

- Velocity of the marker can also be affected or controlled by the settings of the regulated air/gas supply. On the WARSENSOR ZEUS marker this is not an issue unless you are using the bottomline HPA adapter (photo on left bottom) as this is a regulated input. In those cases, refer to the manufacturer instructions for those products.



HPA Bottom Line Kit



CO2 Bottom Line Kit

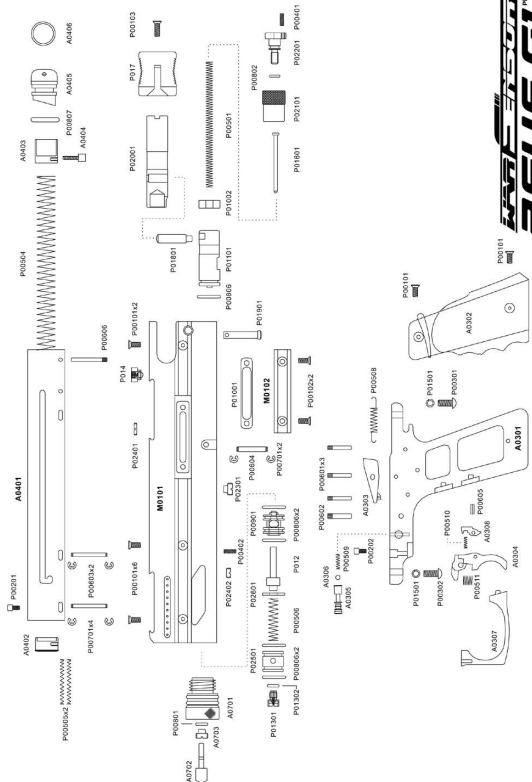


## ZEUS Series Marker Specifications

1. Lightweight Aluminum Milled Receiver Body
2. Semi - composite trigger frame with contoured rubber grips
3. Quick strip Field Maintenance
4. Rear Velocity Adjustment (200-350fps)
5. CO2 Cartridge power source system
6. Bottom Line ASA Adapter compatible (optional hardware)
7. Hopper adapter compatible (optional hardware)
8. Ported barrel
9. Rear Cocking Blowback
10. Vertical Ball Feeding from spring loaded clip above receiver
11. Plate with Ball-Bearing Ball Detent
12. .889 Caliber Bore
13. G2- lighter body design
14. G2-Quicker Reloads
15. G2-Integrated R.L.S. Rail
16. G2-8" Extension Barrel



## Parts Listing & Diagrams (ZEUS Standard)



**WARSENSOR**  
**ZEUS 01**<sup>PLUS</sup>

WARSENSOR - THE SCENARIO EXPERT

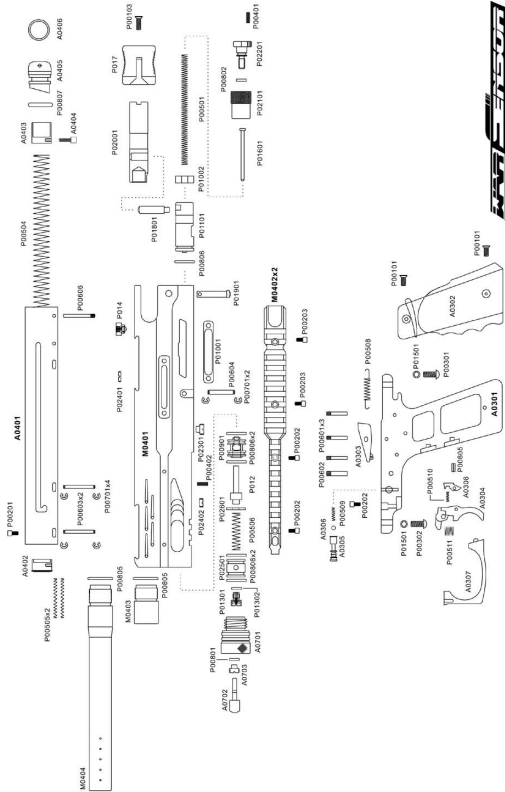
ID	Name
<b>M01</b>	<b>ZEUS G1+</b>
M0101	G1+ Receiver
M0102	G1+ Air Cover
<b>M04</b>	<b>ZEUS G2+</b>
M0401	G2+ Receiver
M0402	G2+ Sight Rail
M0403	G2+ Short Barrel
M0404	G2+ Long Barrel
<b>P001</b>	<b>Screw</b>
P00101	4 x 8 Screw
P00102	4 x 12 Screw
P00103	4 x 18 Screw
<b>P002</b>	<b>Screw</b>
P00201	3 x 6 Screw
P00202	4 x 10 Screw
P00203	4 x 12 Screw
<b>P003</b>	<b>Screw</b>
P00301	5 x 12 Screw
P00302	5 x 14 Screw
<b>P004</b>	<b>Hex Retainer Lug</b>
P00401	3 x 8 Hex Retainer Lug
P00402	4 x 8 Hex Retainer Lug
<b>P005</b>	<b>Spring</b>
P00501	ZEUS Hammer Spring
P00504	ZEUS MAG Main Spring
P00505	MAG Housing Spring
P00506	ZEUS Cup Seal Spring
P00508	SEAR Spring
P00509	Safe Spring
P00510	Trigger Spring
P00511	Trigger tension recoil spring
<b>P006</b>	<b>PIN</b>
P00601	3 ∅ PIN
P00602	4 ∅ PIN
P00603	Clip Retainer Pin (Front)
P00604	Valve PIN

P00605	Trigger retaining pin
P00606	Clip Retainer Pin (Rear)
<b>P007</b>	<b>C-clips</b>
P00701	2.5 C-clips
<b>P008</b>	<b>O Ring</b>
P00801	3x1.5 O Ring
P00802	5.8x1.9 O Ring
P00803	6.07x1.78 O Ring
P00804	12x1.5 O Ring
P00805	14x1.78 O Ring
P00806	14x1.78 O Ring
P00807	15x2.5 O Ring
<b>P009</b>	<b>VALVE</b>
P00901	ZEUS Valve
<b>P010</b>	<b>Rubber Parts</b>
P01001	ZEUS Side Rubber Cover
P01002	ZEUS Striker Rubber Buffer
<b>P011</b>	<b>Hammer</b>
P01101	ZEUS Hammer
<b>P012</b>	<b>Cup Seal</b>
P01201	Cup Seal
P01202	Cup Seal Pin
<b>P013</b>	<b>CO2 Puncture Pin</b>
P01301	CO2 Puncture Pin Body
P01302	Rubber Seal
<b>P014</b>	<b>Ball Detent</b>
P01401	Ball Detent Body
P01402	Ball Detent Spring
P01403	Steel Ball
<b>P015</b>	<b>Washer</b>
P01501	Washer
<b>P016</b>	<b>Striker Spring Tension Guide</b>
P01601	ZEUS Striker Spring Tension Guide
<b>P017</b>	<b>ZEUS Cocking Handle</b>
<b>P018</b>	<b>Bolt / Striker Connection Rod</b>
P01801	ZEUS Connection Rod

<b>P019</b>	<b>Quick Strip Pin</b>
P01901	ZEUS Quick Strip Pin
<b>P020</b>	<b>Bolt</b>
P02001	ZEUS Bolt
<b>P021</b>	<b>Striker Rear Cap</b>
P02101	ZEUS Striker Rear Cap
<b>P022</b>	<b>Velocity Adjuster</b>
P02201	ZEUS Velocity Adjuster
<b>P023</b>	<b>Valve Copper Retainer Screw</b>
P02301	Valve Copper Retainer Screw
<b>P024</b>	<b>Copper Retainer Cover</b>
P02401	ZEUS Upside Cover
P02402	ZEUS BL Cover
<b>P025</b>	<b>Co2 Volumes Housing</b>
P02501	For ZEUS
<b>P026</b>	<b>Cup Seal Guide</b>
P02601	For ZEUS
<b>A03</b>	<b>ASM</b>
A0301	ASM Body
A0302	ASM GRIP
A0303	SEAR
A0304	Single Trigger
A0305	Safe Pin
A0306	Steel Ball
A0307	Single Trigger Guard
A0308	Trigger Back
<b>A04</b>	<b>ZEUS MAG</b>
A0401	MAG Body
A0402	MAG Front Cap
A0403	Ball Pusher
A0404	Ball Pusher Pin
A0405	ZEUS Quick Load Plug
A0406	Plug -pull ring
<b>A07</b>	<b>ZEUS CO2 Plug</b>
A0701	Plug Body
A0702	Tightening Pin
A0703	Tightening Pin Screw



## Parts Listing Diagram – (ZEUS G2)



WARSENSOR - THE SCENARIO EXPERT

ID	Name
<b>M01</b>	<b>ZEUS G1+</b>
M0101	G1+ Receiver
M0102	G1+ Air Cover
<b>M04</b>	<b>ZEUS G2+</b>
M0401	G2+ Receiver
M0402	G2+ Sight Rail
M0403	G2+ Short Barrel
M0404	G2+ Long Barrel
<b>P001</b>	<b>Screw</b>
P00101	4 x 8 Screw
P00102	4 x 12 Screw
P00103	4 x 18 Screw
<b>P002</b>	<b>Screw</b>
P00201	3 x 6 Screw
P00202	4 x 10 Screw
P00203	4 x 12 Screw
<b>P003</b>	<b>Screw</b>
P00301	5 x 12 Screw
P00302	5 x 14 Screw
<b>P004</b>	<b>Hex Retainer Lug</b>
P00401	3 x 8 Hex Retainer Lug
P00402	4 x 8 Hex Retainer Lug
<b>P005</b>	<b>Spring</b>
P00501	ZEUS Hammer Spring
P00504	ZEUS MAG Main Spring
P00505	MAG Housing Spring
P00506	ZEUS Cup Seal Spring
P00508	SEAR Spring
P00509	Safe Spring
P00510	Trigger Spring
P00511	Trigger tension recoil spring
<b>P006</b>	<b>PIN</b>
P00601	3 ∅ PIN
P00602	4 ∅ PIN
P00603	Clip Retainer Pin (Front)
P00604	Valve PIN

P00605	Trigger retaining pin
P00606	Clip Retainer Pin (Rear)
<b>P007</b>	<b>C-clips</b>
P00701	2.5 C-clips
<b>P008</b>	<b>O Ring</b>
P00801	3x1.5 O Ring
P00802	5.8x1.9 O Ring
P00803	6.07x1.78 O Ring
P00804	12x1.5 O Ring
P00805	14x1.78 O Ring
P00806	14x1.78 O Ring
P00807	15x2.5 O Ring
<b>P009</b>	<b>VALVE</b>
P00901	ZEUS Valve
<b>P010</b>	<b>Rubber Parts</b>
P01001	ZEUS Side Rubber Cover
P01002	ZEUS Striker Rubber Buffer
<b>P011</b>	<b>Hammer</b>
P01101	ZEUS Hammer
<b>P012</b>	<b>Cup Seal</b>
P01201	Cup Seal
P01202	Cup Seal Pin
<b>P013</b>	<b>CO2 Puncture Pin</b>
P01301	CO2 Puncture Pin Body
P01302	Rubber Seal
<b>P014</b>	<b>Ball Detent</b>
P01401	Ball Detent Body
P01402	Ball Detent Spring
P01403	Steel Ball
<b>P015</b>	<b>Washer</b>
P01501	Washer
<b>P016</b>	<b>Striker Spring Tension Guide</b>
P01601	ZEUS Striker Spring Tension Guide
<b>P017</b>	<b>ZEUS Cocking Handle</b>
<b>P018</b>	<b>Bolt / Striker Connection Rod</b>
P01801	ZEUS Connection Rod

<b>P019</b>	<b>Quick Strip Pin</b>
P01901	ZEUS Quick Strip Pin
<b>P020</b>	<b>Bolt</b>
P02001	ZEUS Bolt
<b>P021</b>	<b>Striker Rear Cap</b>
P02101	ZEUS Striker Rear Cap
<b>P022</b>	<b>Velocity Adjuster</b>
P02201	ZEUS Velocity Adjuster
<b>P023</b>	<b>Valve Copper Retainer Screw</b>
P02301	Valve Copper Retainer Screw
<b>P024</b>	<b>Copper Retainer Cover</b>
P02401	ZEUS Upside Cover
P02402	ZEUS BL Cover
<b>P025</b>	<b>Co2 Volumes Housing</b>
P02501	For ZEUS
<b>P026</b>	<b>Cup Seal Guide</b>
P02601	For ZEUS
<b>A03</b>	<b>ASM</b>
A0301	ASM Body
A0302	ASM GRIP
A0303	SEAR
A0304	Single Trigger
A0305	Safe Pin
A0306	Steel Ball
A0307	Single Trigger Guard
A0308	Trigger Back
<b>A04</b>	<b>ZEUS MAG</b>
A0401	MAG Body
A0402	MAG Front Cap
A0403	Ball Pusher
A0404	Ball Pusher Pin
A0405	ZEUS Quick Load Plug
A0406	Plug -pull ring
<b>A07</b>	<b>ZEUS CO2 Plug</b>
A0701	Plug Body
A0702	Tightening Pin
A0703	Tightening Pin Screw

## Maintenance, Cleaning and Lubrication

The WARSENSOR marker should be cleaned and lubricated after every usage to ensure proper function and longevity of the product.

**NOTE:** It is not necessary to disassemble the ENTIRE MARKER to perform standard maintenance and lubrication tasks. **DO NOT DISASSEMBLE OTHER AREAS OF THE MARKER UNLESS YOU ARE AN EXPERIENCED AIRSMITH, OR HAVE BEEN ASKED TO DO SO BY AUTHORIZED WARSENSOR SERVICE TECHNICIANS.**

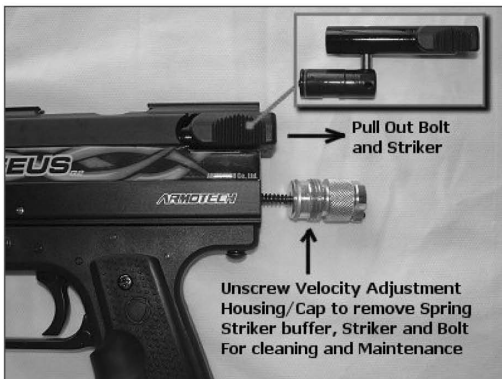
### TIGHTENING SCREWS

- WARSENSOR ships all markers pre-lubed with machine oil only but with most of the screws lightly tightened to allow for expansion and contracting from changes of temperature and pressure during shipping process. As such before doing ANYTHING else with the marker, care should be taken to tighten the following:
  - Parts 37 – the screws securing the trigger frame to the receiver body



### CLEANING AND LUBRICATION OF INTERNALS

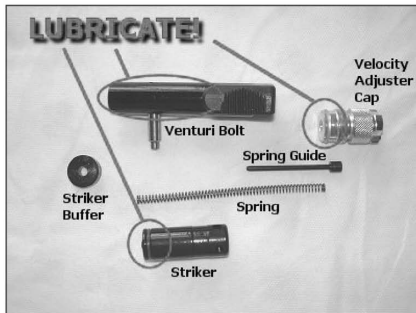
- Remove the striker cap/velocity adjustment assembly at the back of the marker by unscrewing it.
- Cock the marker by pulling back the cocking handle. Do it carefully so that it slowly ejects the striker guide and spring. Remove the guide and spring
- Remove the Venturi bolt by pulling it out the back of the marker



With the internals removed you should be able to look through the receiver body. In the top tube you should see the ball detent slightly sticking out. In the bottom tube you should see the back of the valve with the valve pin sticking through it.

- With all the internals removed, run a squeegee through the receiver body to clean it out - it is recommended that a latex/proflex squeegee be used for this to avoid damage to the ball detent
- The same squeegee can be reused (after cleaning it) to clean the barrel of any residuals

- The receiver body can be cleaned with a soft rag and warm water (careful not to get any on the electronics of the trigger frame if the marker has an e-trigger) or with a solvent such as WINDEX, which dissolves the paintball residue nicely. **DO NOT USE WINDEX TO CLEAN YOUR GOGGLES. FOLLOW THE MANUFACTURERS RECOMMENDATIONS FOR THAT PRODUCT!**
- Use warm, water or Windex to clean the venture bolt, and striker of any residue and dry them with a lint free cloth.
- Once dry, check the o-rings for any damage or loose fit. If you believe the o-ring to be damaged or fitting loosely – replace it immediately. Do not use the rubber bottle o-rings on your striker or barrel. Use only the Urethane or Teflon o-rings for this purpose.
- Also check the o-ring on the velocity adjuster cap to ensure it's not damaged.
- Before re-assembling the internals, it is recommended that these be properly lubricated. **ONLY PAINTBALL GUN LUBRICATION** is recommended. **DO NOT** lubricate your internals with WD-40. Acceptable lubricants are also **TEFLON GREASE, SILICON GREASE.**



- Lubricate **ONLY** the sections of the venturi bolt and striker where the o-ring is fitted. These are the only sections which make physical contact with the sidewalls of the receiver internally.

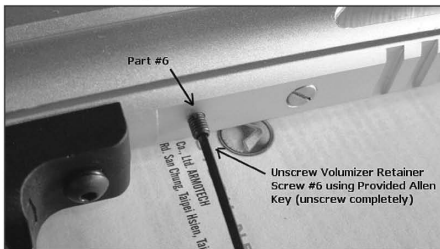
- There are no o-rings on the ZEUS delrin bolt but and 1 on the striker  
The shaft of the delrin venture should be fully lubricated.
- Re-insert the striker and bolt assembly, making certain to orient the  
striker with the flat grooved section pointed down towards the trigger  
frame – this is the section that locks the assembly in place when the  
marker is cocked.
- On inserting the striker/bolt assembly it may seem to JAM- this is the  
SEAR which is stopping it from passing – NOTE: Pull the trigger to allow  
the striker to bypass the sear on the SEMI trigger frame.
- Once the assembly is inserted, insert the striker buffer into the marker,  
and insert the striker spring into the center of the buffer until it  
contacts with the striker itself
- Replace the Velocity Adjustment Cap
- Once this task is completed you have successfully maintained the core  
section of your marker.
- **UNLESS YOU HAVE LEAKS THE INTERNALS (BOLT/STRIKER) ARE THE  
ONLY SECTIONS THAT SHOULD BE REMOVED FROM THE MARKER ON  
A REGULAR BASIS FOR CLEANING.**
- **NEVER LET PAINT RESIDUE SIT IN THE MARKER OVERNIGHT – THE  
CHEMICAL WILL ERODE THE O-RINGS.**

BELOW IS A RECOMMENDED LIST OF ITEMS WHICH SHOULD BE KEPT AS SPARES, OR REPLACEMENT PARTS FOR YOUR WARSENSOR MARKER

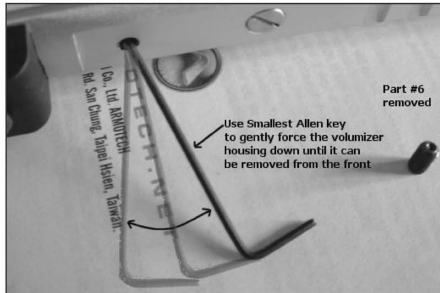
- ✘ Teflon or Urethane O-rings
- ✘ Rubber bottle and ASA O-rings
- ✘ WARSENSOR spare parts/spring kit
- ✘ Replacement cup seal (original or a black magic)

#### REMOVING AND SERVICING CUP SEAL

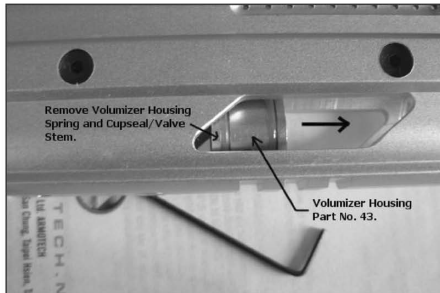
1. Remove part #06 the hex retainer screw at the bottom of the receiver just forward of the trigger-frame



2. Insert a smaller sized allen wrench into the hole where the lug (part #6) came out, and use it to gently push the CO2 volumize housing outward gently. (parts #42 & 43)

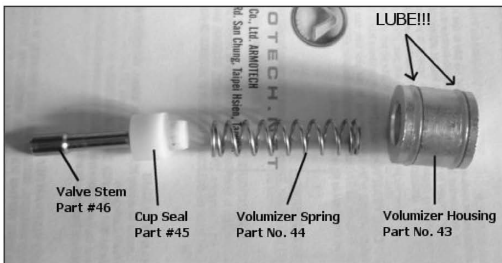


3. Once this part is out, the cupseal, valve stem, spring will all easily be removed for service.

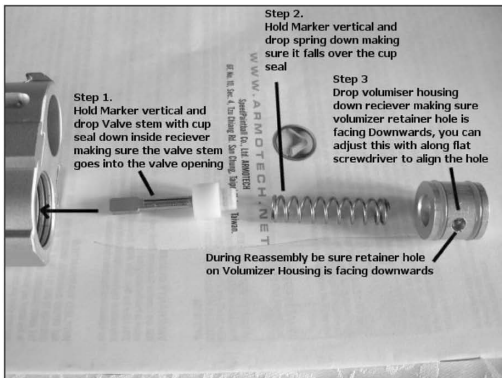




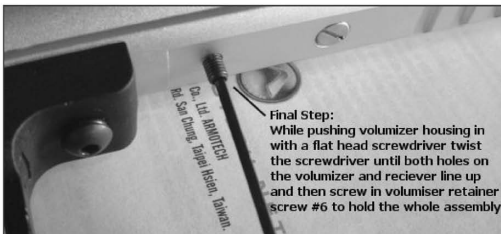
- When reinstalling please remember to install the valve-stem/cup seal, spring, volumizer housing (copper looking piece) and Co2 cartridge puncture plate in that order. Improper assembly will cause the marker to malfunction.



- Use a flat screwdriver (long stem) to slide the volumizer housing back into place.



6. ONLY SERVICE THIS SECTION OF THE MARKER IF YOU EXPERIENCE LEAKING .





**ATTENTION ZUES G2 OWNERS ONLY!**

On the ZEUS G2 model marker, you have the option of using the 1" barrel nub, or an 8" barrel extension for increased range and accuracy.

The illustration (above) shows the marker with the small nub installed. To uninstall simply unscrew the nub by turning it counterclockwise until it is completely removed. You can then replace it with the 8" barrel extension.

**IT IS NOT RECOMMENDED TO USE THE MARKER WITHOUT THE NUB OR EXTENDED BARREL AS IT MAY DECREASE PERFORMANCE.**





## Troubleshooting Tips, Hints 'n Tricks

- Marker not firing:
  - Check to ensure there is a full CO2 cartridge in the marker. If you are using a bottom line and external power source, check to ensure its turned ON and has sufficient PSI to operate the marker.
  - Check to ensure the marker is cocked
  - Check to ensure the safe switch is in LIVE FIRE mode (switched to the left) (ALL MODELS).
- I hear a hissing sound when I attach the power source:
  - ONLY Load CO2 cartridges with the marker in COCKED position, or CO2 will escape.
  - If using a bottom line, check the o-ring on the air supply bottle – it may not look worn but could be – and will leak
  - If leak is not at bottle attachment, check the connection point for the bottom line adapter in the CO2 chamber of the marker – it may not be properly seated- tighten the retainer lug to seat it, or use some lubricant to ensure its not a leak due to dry o-rings
  - Check the o-rings on the bottom line chamber to ensure they are not damaged
  - If none of these sections are leaking, check the cup-seal to make sure it is sitting properly against the valve. This is easily replaced with an WARSENSOR cup-seal or any spyder compatible

equivalent – the BLACK MAGIC cup-seal is highly recommended to cure cup-seal leaks.

- I cannot cock the marker:
  - Remove the velocity adjuster cap and examine the striker pin section to ensure it is assembled properly
  - Check the hex screw at the back of the trigger frame as it may be too tight and causing a misalignment problem
  - If this jam occurred after a ball break, carefully check to ensure there is residual skin fragments of the ball stuck between the receiver housing and the barrel
  - If this jam occurred not from a ball break, carefully disassemble the internals and check to see if the o-rings are not dislodged or broken
- The marker shoots once and does not re-cock:
  - The o-ring on the striker hammer could be damaged and needs replacing
  - Check the cup seal to ensure the whole assembly is sitting properly and is not leaking
  - Check your air supply to ensure you have sufficient pressure to operate the marker
- The marker fires and continues to rapid fire, the re-cock does not hold:
  - The sear adjustment is too low – check the section on trigger adjustments and make the appropriate changes to correct the problem
  - Check the screws which hold the trigger frame to the receiver – if they are loose – tighten them, in particular the rear screw
- The marker requires multiple trigger pulls to fire once:
  - Trigger recoil springs may be dislodged or broken and not returning trigger to full frontal position which engages the sear for the next trigger pull. Trigger disassembly and checking will be required.
  - Balls break in the breach when attempting rapid firing:

- Check to ensure the ball-clip is seated properly
- Check to ensure the loader cap is not blocking flow of balls into breach at the rear of the clip
- Check the clip ball breach opening to ensure balls are passing smoothly and not jamming (this could happen if balls are too big, or if they are mal-formed from swelling).
- Check the spring loaded clip ball feed – spring maybe too weak
- Balls may be too small and when fed into breach the waiting ball is half way down and gets chopped when trigger is pulled.  
Recommended bore is .688/.690 for the ZEUS
- Balls are not flying straight when fired:
  - Clean the barrel with a squeegee
  - Make sure the balls are the correct size/caliber for the bore of the marker .689
- Balls roll out of the barrel or shoots 2 at a time:
  - Ball bore is too small. It needs to be .689
  - WARSENSOR recommends using tournament quality paint
    - RPS / PMI Brand (Big Ball/Warrior, El Tigre, Slam, All Star, Premium, Premium Gold, Marballizer)
    - TC Paintballs (Viper Venoms, Viper Platinum, Pro Series)
    - Nelson Paintballs (Nel Splat, Anarchy, Nelson Gold)
    - PowerBall Paintballs
- Barrel threads look worn down and barrel wobbles a bit (G2 model only)
  - Check to ensure barrel o-ring is in place properly
  - Always use some grease type lubricant on the threads to avoid metal-to-metal wear
- Balls shoot but they do not appear to go the distance:

- Adjust the velocity and check it with a chronograph
- Check to ensure the striker spring is not damaged, weakened or broken
- Check your air supply to ensure there is sufficient pressure
- Check to ensure regulator settings are properly adjusted. Min pressure should not be less than 450 p.s.i. on the HPA bottom line if you have that installed.

## Warranty Information

### LIMITED 1 YEAR WARRANTY

This product is warranted to the retail consumer for one year from date of retail purchase against defects in material and workmanship and is transferable. To register the serial number of your paintball marker, please return the Product Registration form found in your owner's manual packet. The warranty is not conditioned on the return of the card.

### WHAT IS COVERED

Replacement parts and labor. Transportation charges to consumer for repaired product.

### WHAT IS NOT COVERED

Transportation charges to WARSENSOR for defective product. Damages caused by abuse or failure to perform normal maintenance. (See Step 9) Any other expense. CONSEQUENTIAL DAMAGES, INCIDENTAL DAMAGES, OR INCIDENTAL EXPENSES, INCLUDING DAMAGE TO PROPERTY. SOME STATES DO NOT ALLOW THE EXCLUSION OR LIMITATION OF INCIDENTAL OR CONSEQUENTIAL DAMAGES, SO THE ABOVE LIMITATION OR EXCLUSION MAY NOT APPLY TO YOU.

### WARRANTY CLAIMS

USA customers: Attach your name, address, description of problem, phone number and copy of sales receipt to product. Package and return to WARSENSOR US P.O. Box 607 Berlin, NJ 08009. International Customers: Please return product to your nearest distributor. If you do not know your distributor, please call 1-856-753-2662 and ask for our International Department for assistance.

### IMPLIED WARRANTIES

ANY IMPLIED WARRANTIES, INCLUDING THE IMPLIED WARRANTIES OF MERCHANTABILITY AND FITNESS FOR A PARTICULAR PURPOSE, ARE LIMITED IN DURATION TO ONE YEAR FROM DATE OF RETAIL PURCHASE. SOME STATES DO NOT ALLOW LIMITATIONS ON HOW LONG AN IMPLIED WARRANTY LASTS, SO THE ABOVE LIMITATIONS MAY NOT APPLY TO YOU. To the extent any provision of this warranty is prohibited by federal, state, or municipal law which cannot be preempted, it shall not be applicable. This warranty gives you specific legal rights, and you may also have other rights which vary from state to state and country to country.

## **SUGGESTED ITEMS FOR PROPER MAINTENANCE**

Rod Squeegee with Swab on the end

Cleaning cloths (soft terry-cloth material)

Paintball Marker Lubrication (OIL designed for paintball markers , or Teflon /Silicon grease)

o-ring and spring replacement kit (as a spare)

hex-wrenches of various sizes (marker comes with most commonly needed ones)

Barrel Plug or Condom

## **RECOMMENDED UPGRADES**

Additional paintball ammo clips

Quick-Load adapter for ammo clips

10-round ball pods

Bottom line adapters (if this is your main marker)