



This paintball marker is not a toy. Misuse or mishandling can result in serious injury or death. Every person within range of a loaded paintball gun must wear eye protection specifically designed for paintball.

## WELCOME TO MODERN COMBAT SPORTS!

BEFORE YOU BEGIN, HERE ARE A FEW TIPS ON HOW TO BE COMBAT-EFFECTIVE WITH YOUR MARKER.

1. SELECT YOUR PAINT CAREFULLY
2. THE SIZE AND CONSISTENCY OF THE SHAPE WILL DIRECTLY IMPACT THE ACCURACY AND RELIABILITY OF YOUR MARKER. OBLONG OR EGG-SHAPED PAINT WILL NOT LOAD CORRECTLY INTO YOUR MARKER, CAUSING JAMS OR CHOPS. AVERAGE FIELD PAINT IS NOTORIOUS FOR THIS.
3. THICK-WALLED WOODSBALL PAINT IS IDEAL FOR MAG-FED MARKERS. TYPICAL MATCH-GRADE SPEEDBALL PAINT IS BRITTLE AND DESIGNED TO BURST EASILY AND MAY DO SO IN YOUR MAGAZINE OR CHAMBER. TRY DROPPING ONE ROUND FROM STANDING HEIGHT - IF IT BOUNCES OFF OF THE GROUND, IT'S A GOOD SIGN THAT IT WON'T BREAK PREMATURELY IN YOUR MARKER.
4. KEEP YOUR MAGAZINES CLEAN. DIRT, MUD, OR ANY OTHER DEBRIS FROM BROKEN PAINT IN YOUR MAGAZINES WILL PREVENT YOUR PAINT FROM FEEDING CORRECTLY.

## OPERATING YOUR MARKER

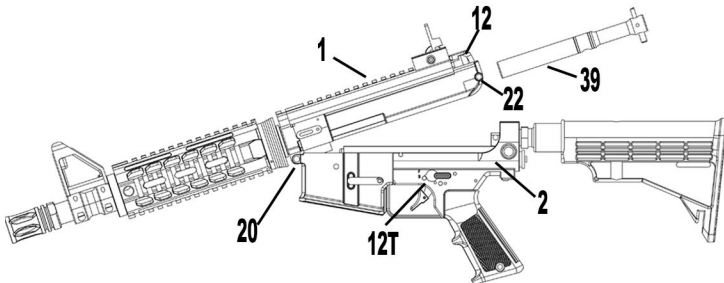


**YOU MUST WEAR SAFETY GOGGLES WHEN HANDLING AND OPERATING YOUR MARKER.**  
ALWAYS FOLLOW THE SAFETY RULES WHEN OPERATING THE MARKER  
**ALWAYS REMOVE THE AIR TANK BEFORE DISASSEMBLING YOUR MARKER**

1. Put the barrel blocking device over the tip of the barrel.
2. Put the marker on safe by moving the selector switch to S for safe.
3. Put goggles on.
4. Pull back the charging handle.
5. Attach gas cylinder to the air source adaptor located at the rear of the marker.
6. Attach hopper to feed port or magazine to magazine well and press it in firmly.
7. Remove barrel blocking device.
8. Take the marker off safe by flipping the selector switch to F for fire.
9. Check the velocity of the marker with a chronograph to verify that the velocity does not exceed 300fps (Feet per Second) or the set field limit.

➔ **YOUR 468 IS EQUIPPED WITH THE LOK BOLT ANTI-CHOP SYSTEM, WHICH MEANS THAT IN ORDER FOR YOUR 468 TO FIRE, IT WILL NEED TO BE LOADED WITH PAINTBALLS**

## ASSEMBLING YOUR 468



1. Make sure the trigger is on safe mode at #12T SELECTOR SWITCH to S for Safe.
2. Press #20 FRONT TAKE DOWN PIN in to the open position.
3. Align front lug of the upper receiver to front of magazine well.
4. Push detent pin through all tabs.
5. Before closing up #1 upper make sure the striker is in the rear position.
6. Make sure bolt pin in correct position that aligns with striker hole.
7. Pivot #1 UPPER ASSEMBLY towards #2 LOWER ASSEMBLY.
8. Close assembly - pull #12 CHARGING HANDLE slightly - no more than 1 inch until both upper and lower are fully engaged without gap.
9. Push #22 REAR TAKE DOWN PIN and lock into place.



THIS PRODUCT IS NOT A TOY AND IT IS NOT INTENDED FOR UNSUPERVISED USE BY ANY PERSONS UNDER THE AGE OF 18 YEARS.  
WARNING: BEFORE USING THIS PRODUCT, PLEASE READ ALL INSTRUCTIONS CAREFULLY

## BEFORE SHOOTING - YOU MUST KNOW

1. YOUR MARKER WILL NOT FIRE UNLESS YOU HAVE A LOADED MAGAZINE ATTACHED BECAUSE THE LOK-BOLT IS ACTIVATED.
2. DO NOT FIRE YOUR 468 WITH THE UPPER AND LOWER RECEIVERS SEPARATED. DOING SO MAY LEAD TO INJURY AND DAMAGE
3. DO NOT FIRE YOUR 468 WITHOUT YOUR BOLT CARRIER. DOING SO MAY LEAD TO INJURY AND DAMAGE TO THE MARKER.
4. BEFORE SEPARATING THE UPPER AND LOWER RECEIVERS, COCK THE CHARGING HANDLE TO LOCK THE BOLT TO THE REAR. BE SURE TO OPEN THE UPPER AND LOWER CAREFULLY AS THE BOLT CARRIER MAY BECOME DISLODGED AND DISCARDED ACCIDENTALLY.
5. DO NOT EXCEED THE SAFE FPS LIMIT OF YOUR LOCAL FIELD. PROJECTILE SPEEDS OVER 300 FPS ARE GENERALLY REGARDED AS UNSAFE AND ARE NOT RECOMMENDED FOR USE BY ANYONE.
4. THE CORRECT WAY OF RELOADING YOUR 468 WITH LOK-BOLT IS:
  - A. COCK THE CHARGING HANDLE TO LOCKING POSITION
  - B. INSERT LOADED MAGAZINE
  - C. CONTINUE TO FIRE.

## BOLT ALIGNMENT TEST

1. Select SELECTOR SWITCH from safety to fire (F Position)
2. Pull trigger to hear an audible click
3. Pull CHARGING HANDLE to cycle the bolt
4. Pull trigger again - making sure to hear an audible click
5. This process can be repeated a few times - to ensure proper alignment

**DO NOT INSERT A MAGAZINE UNTIL THE BOLT ALIGNMENT PASSES THIS TEST**

## ADJUSTING VELOCITY

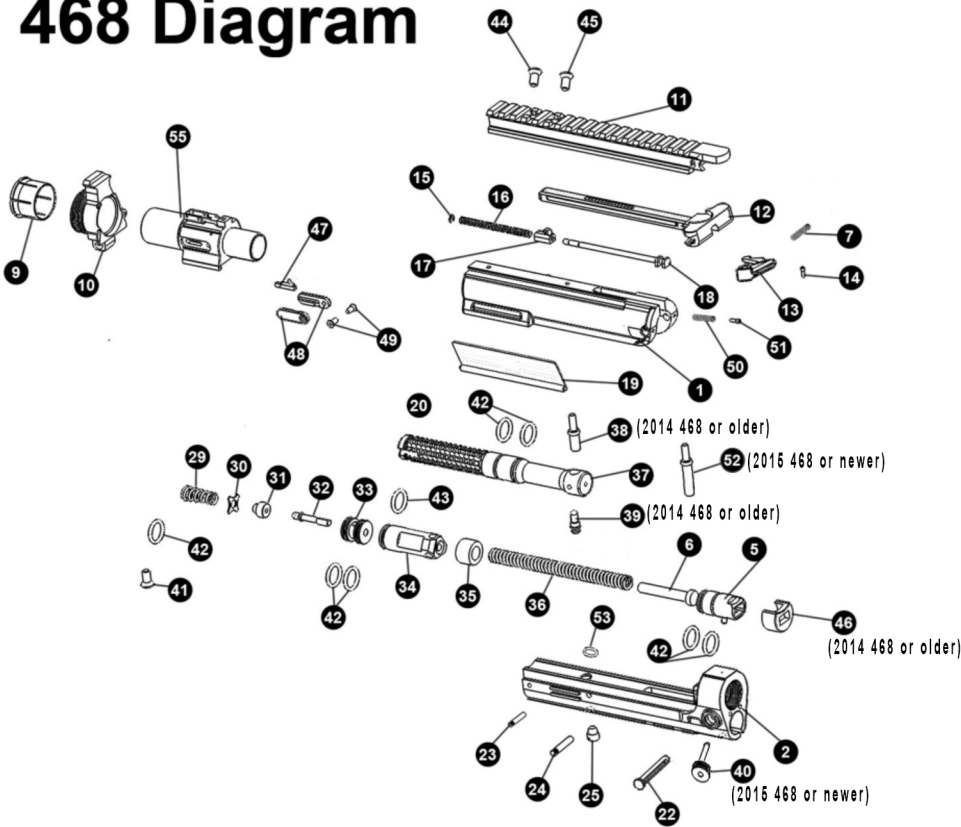
1. Remove locking pin of left side of velocity adjustment housing
2. Depress VELOCITY ADJUSTER HOUSING and turn counter clockwise carefully - spring is under pressure
2. Remove assembly - and turn spring guide to increase or decrease velocity. Clockwise to decrease and counter clockwise to increase velocity
3. DO NOT ADJUST PASSED FIELD SAFE LIMIT

## DIRECTIONS FOR SAFE HANDLING

1. Always wear proper paintball eye protection and never remove them when operating the marker or, when near playing area.
2. Treat every paintball marker as if it were loaded.
3. Never point a paintball marker at anyone not wearing the proper paintball eye protection.
4. Always use a barrel blocking device as well as changing the selector switch to safe mode.
5. Never look down the barrel of a paintball marker. Accidental discharge into the eyes may cause permanent injury or death.
7. Never fire your marker with the velocity exceeding 300 feet per second.
12. Pressurize and load the marker only when the marker will be immediately used. Unload and remove the gas cylinder immediately after use for safe storage.
13. Always remove gas source before disassembly.
14. Keep exposed skin away from escaping gas when installing or removing cylinder. All compressed gases are very cold and can cause frostbite under certain conditions.
15. Do not disassemble or service this marker while it is pressurized with gas.
16. Store the paintball marker unloaded and without air in a safe place.
17. Follow warnings listed on gas source for handling and storage.
18. Use only .68 caliber paintballs. Never load or fire any foreign objects.

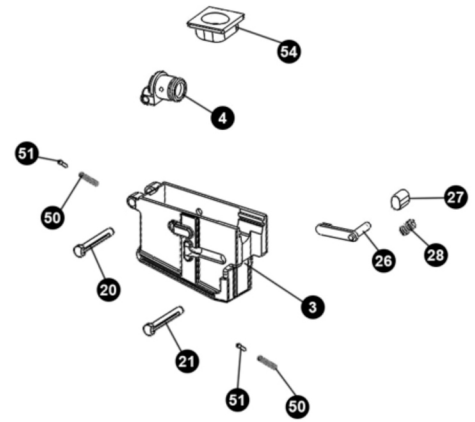
For step by step instructional guide go to:  
[www.rap4.com/468videomanual](http://www.rap4.com/468videomanual)

# 468 Diagram

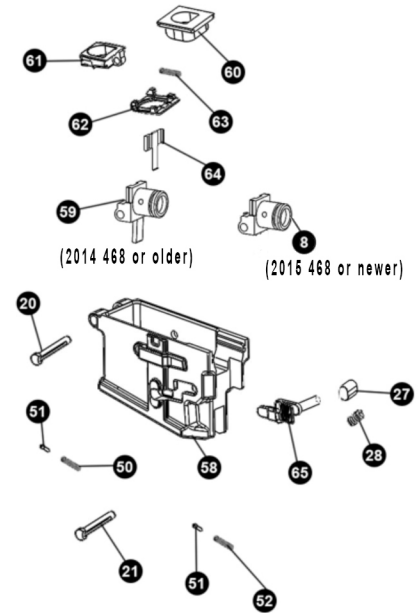


1	Upper Receiver	22	Rear Take Down Pin	43	Striker O-ring
2	Lower Receiver	23	Air Chamber Valve Locking Pin	44	Top Rail Front Screw
3	Standard Magazine Well	24	Main Body Pin	45	Top Rail Rear Screw
4	Air Chamber Valve Cover	25	Air Chamber Valve Screw	46	Velocity Housing Cover
5	Velocity Adjustment Housing	26	Magazine Release Hook	47	Ball Detents
6	Velocity Guide Pin	27	Magazine Release Button	48	Ball Detent Covers
7	Charging Handle Lock Spring	28	Magazine Release Spring	49	Ball Detent Cover Screws
8	Valve Cover for Dmag	29	Air Chamber Valve Spring	50	Take Down Pin Locking Pin
9	Barrel Sleeve	30	Poppet Guide	51	Take Down Pin Spring (Long)
10	Delta Ring Adapter	31	Poppet	52	Bolt Pin(NEW only for 2015 and newer 468)
11	Top Rail	32	Poppet Pin	53	Upper and Lower Receiver Seal
12	Charging Handle	33	Air Chamber Housing	54	Standard Feed Adapter
13	Charging Handle Latch	34	Striker	55	LOK Bolt Adapter
14	Charging Handle Latch Lock Pin	35	Dampener	56	Air Chamber Valve Cover Spring
15	C Clip	36	Velocity Spring	57	Dmag Magazine Well Latch
16	Charging Handle Spring	37	Bolt	58	Dmag Magazine Well
17	Charging Handle Locking Block	38	Bolt Pin	59	Air Chamber Valve Cover for Dmag
18	Charging Handle Spring Guide	39	Bolt Carrier	60	Dmag Feed Adapter
19	Dust Cover (Optional)	40	Locking Pin(NEW only for 2015 and newer 468)	61	Dmag Anti-Ball Drop Lvl 1
20	Front Take Down Pin	41	Air Chamber Cover Screw (Optional)	62	Dmag Anti-Ball Drop Lvl 2
21	Middle Take Down Pin	42	Main O-rings	63	Anti-Ball Drop Spring

## Standard Magazine Well



## DMags Magazine Well



# TRIGGER ASSEMBLY

Trigger Components			
1T	Pistol Grip	9T	Trigger Spring
2T	Trigger Component Housing	10T	Trigger
3T	Front Trigger Screw	11T	Trigger Lock Pin
4T	Rear Trigger Screw	12T	Selector Switch
5T	Screw Washer	13T	Trigger Pin
6T	Trigger Shoe	14T	Trigger Sear
7T	Trigger Shoe Locking Pin	15T	Trigger Sear Pin
8T	Pistol Grip Screw	16T	Sear Spring
		17T	Spring Lock Pin

