

PIRANHA® GTI INSTRUCTIONS FOR USE

The Piranha® GTI is capable of high rates of fire and an agitating hopper such as an Extreme Rage® Overdrive™ is recommended for better performance.



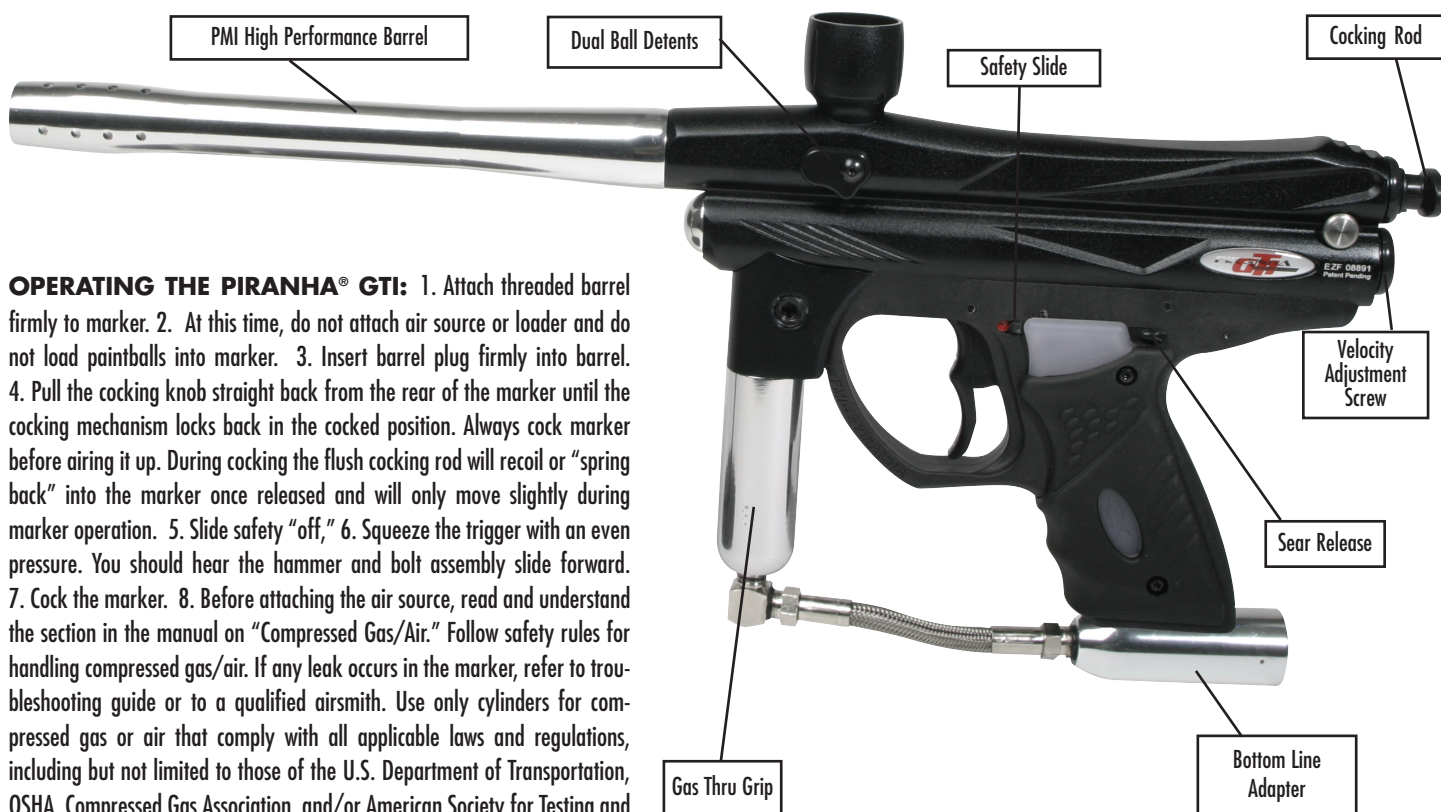
WARNING: READ OPERATOR'S MANUAL BEFORE USE. EVERY PERSON WITHIN RANGE OF AN AREA WHERE A PAINTBALL MARKER IS IN USE MUST WEAR PROTECTIVE GOGGLES AND HEADGEAR SPECIFICALLY DESIGNED FOR PAINTBALL.



WARNING: ALWAYS COCK MARKER BEFORE ATTACHING AIR SOURCE. MARKER CAN DISCHARGE IF AIR SOURCE IS ATTACHED BEFORE MARKER IS COCKED. THE MARKER CONTAINS COMPRESSED GAS OR AIR WHEN PRESSURIZED. NEVER DISASSEMBLE MARKER UNTIL REMOVING ALL GAS OR AIR FROM THE SYSTEM. RULES FOR SAFE HANDLING OF COMPRESSED GAS OR AIR MUST BE FOLLOWED AT ALL TIMES.



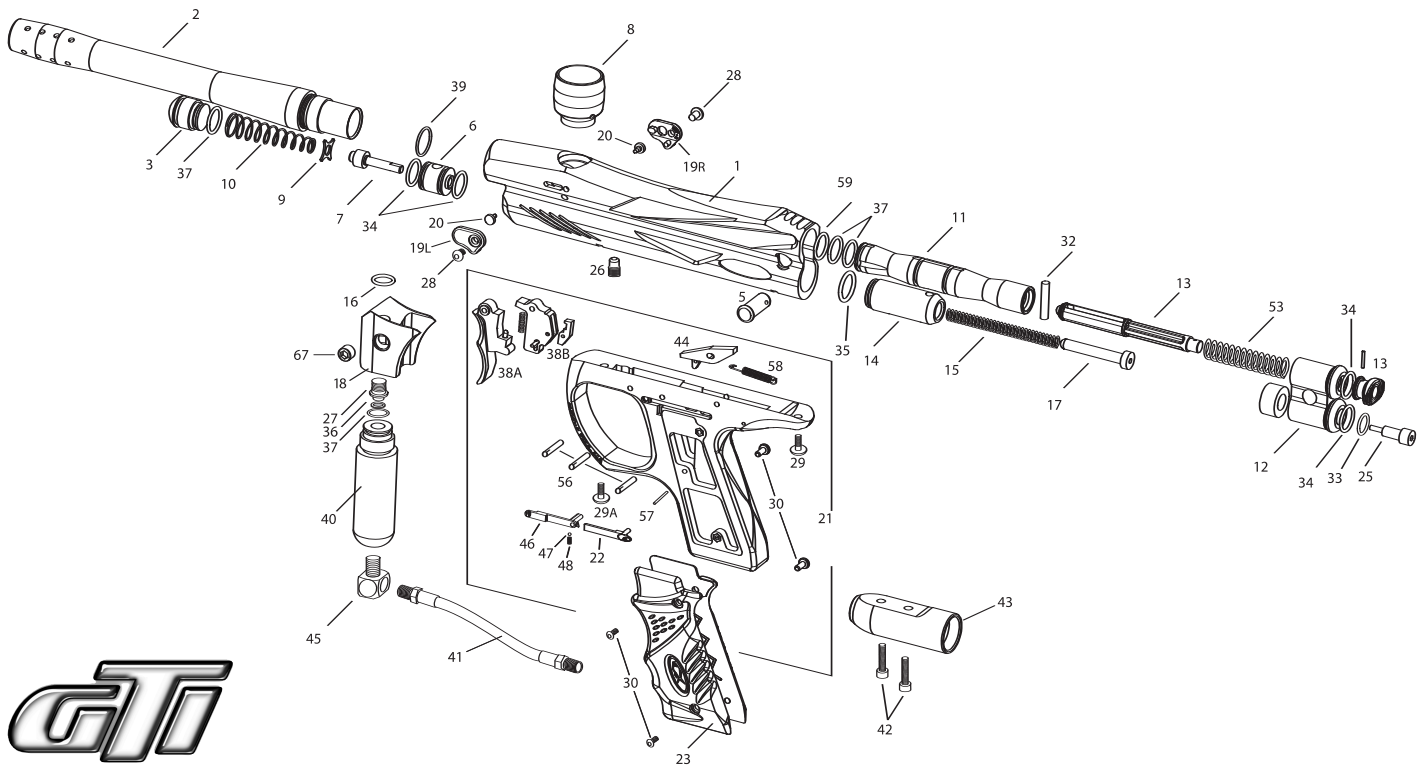
WARNING: WHEN COCKING THE PRESSURIZED MARKER, DO NOT RELEASE THE COCKING KNOB UNTIL AFTER THE COCKING MECHANISM HAS LOCKED BACK INTO THE COCKED POSITION; RELEASING THE COCKING KNOB DURING COCKING CAN CAUSE THE MARKER TO SHOOT.



OPERATING THE PIRANHA® GTI: 1. Attach threaded barrel firmly to marker. 2. At this time, do not attach air source or loader and do not load paintballs into marker. 3. Insert barrel plug firmly into barrel. 4. Pull the cocking knob straight back from the rear of the marker until the cocking mechanism locks back in the cocked position. Always cock marker before airing it up. During cocking the flush cocking rod will recoil or "spring back" into the marker once released and will only move slightly during marker operation. 5. Slide safety "off," 6. Squeeze the trigger with an even pressure. You should hear the hammer and bolt assembly slide forward. 7. Cock the marker. 8. Before attaching the air source, read and understand the section in the manual on "Compressed Gas/Air." Follow safety rules for handling compressed gas/air. If any leak occurs in the marker, refer to troubleshooting guide or to a qualified airsmith. Use only cylinders for compressed gas or air that comply with all applicable laws and regulations, including but not limited to those of the U.S. Department of Transportation, OSHA, Compressed Gas Association, and/or American Society for Testing and Materials. 9. With goggles on, test for function after attaching air source: Squeeze the trigger. The marker should shoot air and the cocking knob should cycle slightly after each trigger squeeze, repeat several times. Flush cocking rods will bobble some, but they will not come out all the way. 10. Slide safety forward (semi version). Paintballs may then be loaded.



WARNING: BEFORE DISASSEMBLY, STORAGE, OR TRANSPORT OF THE MARKER, REMOVE AIR SOURCE FIRST, THEN REMOVE ALL PAINTBALLS FROM THE MARKER, BARREL, AND LOADER. REMOVE ALL GAS OR AIR FROM THE MARKER. INSERT BARREL PLUG AND SLIDE THE MECHANICAL SAFETY FORWARD SO THE SAFETY IS ENGAGED AND THE RED DOT IS NOT LIT. THE SAFETY IS A SMALL MECHANICAL SLIDE ON THE LEFT SIDE OF THE MARKER ABOVE THE TRIGGER. WHEN THE SAFETY IS "OFF," A RED DOT IS VISIBLE ON THE MARKER. THE TRIGGER CAN STILL BE PULLED IF THE SAFETY IS "ON," BUT THE MARKER WILL NOT FIRE OR DE-COCK. E-FORCE MODEL: THE ON/OFF BUTTON ON THE LEFT SIDE OF THE FRAME SHOULD BE USED AS SAFETY.



1A. Milled Receiver Body - Matte Black	73100	27. ASA Screw	71580
1B. Milled Receiver Body - Matte Blue	73101	28. Ball Detent Screw	10180
1C. Milled Receiver Body - Matte Gunmetal	73102	29. Rear Trigger Frame Screw	10682
2. 9" Barrel	73120	29A. Front Trigger Frame Screw	71583
3. End Cap GTI	73123	30. Grip Screws	10782
5. Field Strip Pin Assembly	10038	32. Bolt Pin	10291
6. Valve Body	10027	33. Velocity Screw O-Ring	10460
7. Red Valve Cup Seal Assembly	10140	34. Valve/Rear Block O-Rings	10260
7. Black Valve Cup Seal Assembly	10127	35. Blue Hammer O-Ring	10129
8A. Removable Low Rise - Matte Black	73110	36. Screen Filter	71667
8B. Removable Low Rise - Matte Blue	73111	37. Bolt O-Rings	41010
8C. Removable Low Rise - Matte Gunmetal	73112	37. Gas Thru Grip O-Ring	41010
9. Valve Guide	10520	37. ASA Slug O-Ring	41010
10. Valve Spring	71597	38A. Trigger	73141
11. Molded Flush Cocking Bolt	73124	38B. Trigger Pawl Assembly	73142
12. Molded Flush Cocking Rear Block Assembly	73127	39. Barrel O-Ring	10161
13. Molded Flush Cocking Rod	73126	40. Gas-Thru Foregrip	73121
14. Hammer Assembly	10024	41. 6.25" SS hose	47011
15. Blue Hammer Spring	10351	42. Bottom line SS screw	42016
16. ASA O-ring	10257	43. Straight Bottomline Adapter	73122
17. Spring Guide	10301	44. Sear	10721
18A. Vertical ASA Adapter - Matte Black	73105	45. 90° Elbows	47000
18B. Vertical ASA Adapter - Matte Blue	73106	46. Safety Slide	73143
18C. Vertical ASA Adapter - Matte Gunmetal	73107	47. Safety Ball	10730
19L. Ball Detent Cap Left	73129	48. Safety Spring	10750
19R. Ball Detent Cap Right	73130	53. Flush Spring	10203
20. Ball Detent	10160	55. Trigger Spring	73146
21. Polymer Frame Assembly '07	73140	56. Sear/Trigger Pin	10766
22. Sear Release Slide	73144	57. Trigger/Spring Pin	10767
23. Wrap Around Grip	73145	58. Sear Spring	10753
25. Velocity Screw	10026	59. Front Bolt O-Ring	57738
26. Valve Set Screw	10513	67. 1/8th" NPT Plug	47006