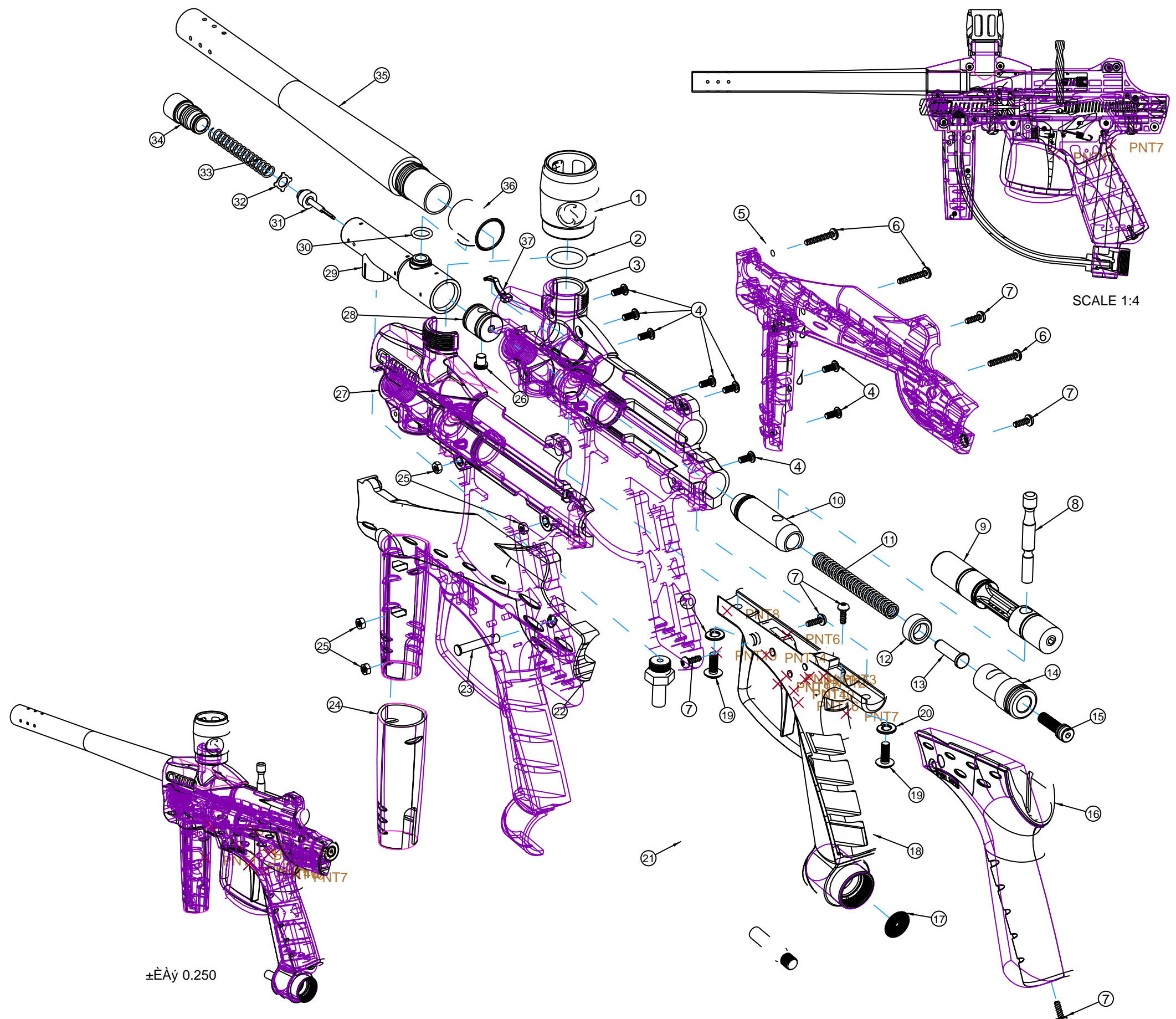


FIND NO.	QTY.	PART NO.	PART DESCRIPTION
1	1	166273-000	μ ⁻ ²Öxé ^ó Feedport Adapter assembly
2	1	134472-000	ÅÜ-âÈ! O-Ring - Feedport 5.1
3	1	135835-000	ÓÒÁí¿ĚĚí Receiver (R) -1634
4	8	135257-000	ÅÝĚ¿ Screw #6-32
5	1	135837-000	ÓÒÁí¿ĚĚí Ç Receiver cover (R)-1634
6	3	135597-000	ÅÝĚ¿ Screw #6 X 20mm
7	6	131427-000	ÅÝĚ¿ Hi-low screw M3.5-M3.0
8	1	131951-000	¶€ Cocking pin - 0331
9	1	166272-000	ÉÍ·xé ^ó Bolt assembly 1634
10	1	164475-000	x²·xé ^ó Hammer assembly
11	1	136291-000	μ ⁻ »É Spring -hammer
12	1	136290-000	» ⁰³ â/Æ÷ Bumper 1634
13	1	131559-000	μ ⁻ ¹·Üxù Guide spring -0065
14	1	131560-000	x²·Ěû Plug hammer -0065
15	1	164476-000	μ÷ĚÜÅÝĚ¿xé ^ó Velocity adjustment assembly -0065
16	1	135841-000	°ÑĚÖ Ç Grip panel-wraparound-1634
17	1	130727-000	¹ýÅĚÆ÷ Screen filter - generic
18	1	135839-000	°ÑĚÖ Grip frame - plasti-1634
19	2	130815-000	ÅÝĚ¿ Screw #10 2040/2050
20	2	130806-000	Ěø½éxÓ Lockwasher #10 2040/2050
21	1	165602-000	Éí¹Üxé ^ó Hose braided assembly
22	1	135836-000	xóÁí¿ĚĚí Ç Receiver cover (L)-1634
23	1	131443-000	¶€ Pin -hammer plug retainer 0008/001
24	1	135842-000	Ç°°ÑĚÖ¹Ü sleeve foregrip
25	4	135071-000	ÅÝÄ, Nut-6-32 unc
26	1	135076-000	»i·šÅÝĚ¿ Valve set screw 1105
27	1	135834-000	xóÁí¿ĚĚí Receiver (L)-1634
28	1	166108-000	·šÉixé ^ó Valve Body Assembly
29	1	135073-000	·šÇ» Valve housing 1105
30	1	130729-000	ÅÜ-âÈ! O-ring 3/8IDx1/16W 70 duro parker
31	1	134710-000	ÅÜ-â»i·š Vlave stem w/molded cup seal
32	1	135213-000	½éxÓ Guide - valve
33	1	131104-000	μ ⁻ »É Spring -valve 2040 avenger II
34	1	166271-000	»i·šĚÜxé ^ó Valve stem assembly 1634
35	1	166164-000	Áí¿Ě¹Üxé ^ó Barrel assembly -1634
36	1	135077-000	ÉÍ·İx Bolt collar 1105
37	1	136168-000	ÇòÖéĚû Ball stop 1634



TRITON 3 KIT

ÅÖÖ¾ÄÄ

2007-09-10

1

0.4:1

TRITON 3 KIT ASSEMBLY

1634-00B