



# DMS TRIGGER INSTALLATION

The following is a step by step guide to installing your CP trigger on your Dm5.

Tools you will need:

Punch

Hammer

3/32" Allen key

5/64" Allen key

1/16" Allen key

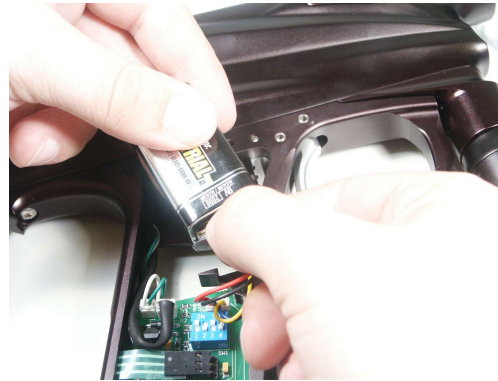
## Step 1

Remove grips from marker



## Step 2

Remove battery



## Step 3

Remove grip frame and components



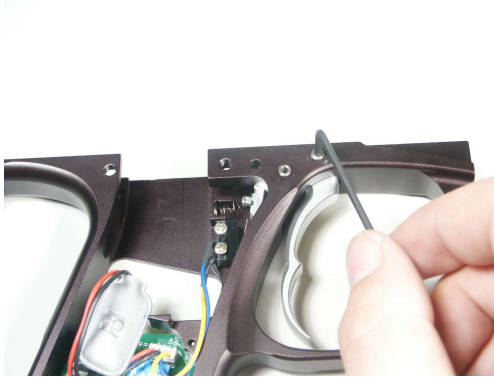
## Step 4

With hammer and punch, tap stock trigger pin out. Always tap from left side of frame (as if marker was pointed away from you)



## Step 5

Remove Stock trigger adjustment screws.



## Step 6

Remove stock trigger.



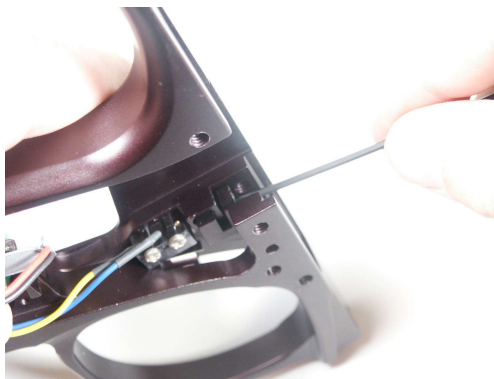
## Step 7

You should have your CP trigger along with your magnet bracket, trigger spacer and trigger adjustment screw ready to install.



## Step 8

Install magnet bracket on grip frame stock spring retainer.



## Step 9

Place trigger spacer into left side of trigger.



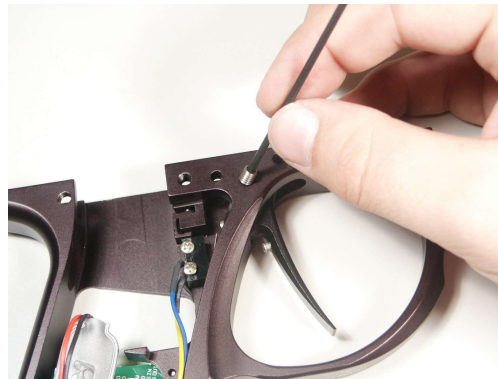
## Step 10

Insert trigger into frame.



## Step 11

Align trigger bearing ID with threaded hole, then insert and tighten screw.



## Step 12

Re-install grip frame and components



## Step 13

Re-install battery





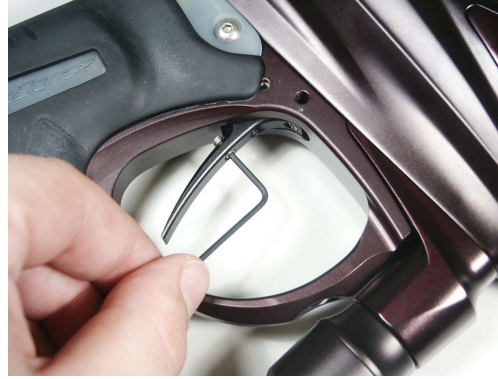
## Step 14

Replace grips



## Step 15

Adjust back stop screw to your liking



## Step 16

Adjust travel adjustment screw to your liking.



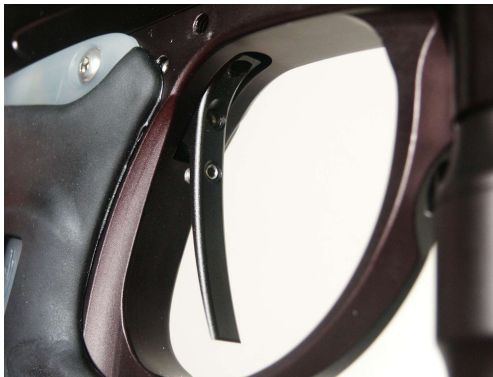
## Step 17

Adjust magnetic tension screw to your liking.



## Step 18

You have just successfully installed a CP trigger on you Dm5



Custom Products 1640 W Sunrise Blvd, Gilbert AZ 85233  
Ph:480-539-4820 Fax:480-497-3273 [www.customproducts.us](http://www.customproducts.us)