



# PLANET ECLIPSE: EMEK

USER MANUAL / ENGLISH

E M E K



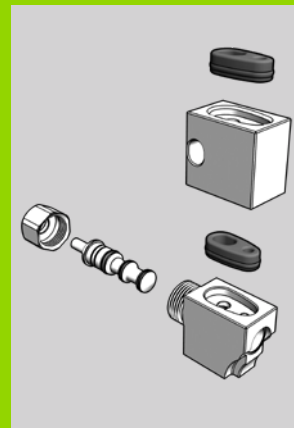
AIR



68 CAL



50 CAL



# WARNINGS

## READ CAREFULLY BEFORE USE

- ⚠ **THE PLANET ECLIPSE EMEK IS NOT A TOY. PAINTBALL SAFETY RULES MUST BE FOLLOWED AT ALL TIMES.**
- ⚠ Careless or improper use of the EMEK, including failure to follow instructions and warnings within this User Manual could cause serious injury or death.
- ⚠ Do not remove or deface any warnings attached to the EMEK.
- ⚠ Paintball industry standard eye/face/ear and head protection designed specifically to stop paintballs and meeting ASTM standard F1776 (USA) or CE standard (Europe) must be worn by the user and any person within range. Proper protection must be worn during assembly, cleaning and maintenance.
- ⚠ Hearing protection should be worn.
- ⚠ Never shoot at a person who is not wearing proper protection.
- ⚠ Never look directly into the barrel of the marker. Accidental discharge into the eyes may cause permanent injury or death. Never look into the barrel or breech area of the EMEK whilst the marker is switched on and able to fire.
- ⚠ Keep the EMEK in SAFE mode until ready to shoot.
- ⚠ Treat every marker as if it is loaded and ready to fire.
- ⚠ Always fit a barrel-blocking device to the EMEK when not in use.
- ⚠ Always remove paintballs from the EMEK when not in use.
- ⚠ Do not field strip or remove any parts while the marker is pressurised.
- ⚠ Do not pressurise the EMEK without all the components of the marker correctly installed, as high-pressure gas may be emitted.
- ⚠ Do not fire the EMEK without the bolt correctly installed.
- ⚠ Never put your finger or any foreign objects into the paintball feed tube of the EMEK.
- ⚠ Never allow pressurised gas to come into contact with any part of your body.
- ⚠ Always remove the first stage regulator and relieve all residual gas pressure from the EMEK before disassembly.
- ⚠ Always remove the first stage regulator and relieve all residual gas pressure from the EMEK for transport and storage.
- ⚠ Always follow guidelines given with your first stage regulator for safe transportation and storage.
- ⚠ Always store the EMEK in a secure place.
- ⚠ Observe all local and national laws, regulations and guidelines.



# WARNINGS

## READ CAREFULLY BEFORE USE

- ⚠ Persons under 18 years of age must have adult supervision when using or handling the EMEK.
- ⚠ Use only professional paintball fields where codes of safety are strictly enforced.
- ⚠ Use compressed air/nitrogen only. Do not use any other compressed gas or pressurised liquid including CO2.
- ⚠ Always follow instructions, warnings and guidelines given with any first stage regulator you use with the EMEK.
- ⚠ Use the calibre of paintballs that are correct for your marker calibre (0.68cal or 0.50cal).
- ⚠ Always measure your marker's velocity before playing paintball, using a suitable chronograph.
- ⚠ Never shoot at velocities in excess of 300 feet (91.44 metres) per second, or at velocities greater than local or national laws allow.
- ⚠ Any installations, modifications or repairs should be carried out by a qualified individual at a licensed and insured paintball facility.

### WARNING!



This user manual must accompany the product in the event of resale or new ownership. Should you be unsure at any stage you must seek expert advice.



#### **This Users Manual is in English.**

It contains important safety guidelines and instructions. Should you be unsure at any stage, or unable to understand the contents of this manual you must seek expert advice.



#### **Le mode d'emploi est en Anglais.**

Il contient des instructions et mesures de sécurité importantes. En cas de doute, ou s'il vous est impossible de comprendre le contenu du mode d'emploi, demandez conseil à un expert.



#### **Este manual de usuarios (operarios)**

Usuarios está en Inglés. Contiene importantes normas de seguridad e instrucciones. Si no está seguro de algún punto o no entiende los contenidos de este manual debe consultar con un experto.



#### **Diese Bedienungs - und Benutzeranleitung ist in Englisch.**

Sie enthält wichtige Sicherheitsrichtlinien und -bestimmungen. Sollten Sie sich in irgendeiner Weise unsicher sein, oder den Inhalte dies Heftes nicht verstehen, lassen Sie sich bitte von einen Experten beraten.

---

**QUICK START (06-14)**

06	Setting up the EMEK
08	The EMEK safety switch
10	Velocity adjustment
11	Detents
12	Unloading the EMEK
14	Storage and transportation

**MAINTENANCE (15-17)**

15	On-line maintenance videos
16	Fault-finding tables

**TECHNICAL (18-26)**

18	Parts list
20	EMEK inline regulator
21	Three-way assembly
22	Bolt assembly (68cal)
23	Bolt assembly (50cal)
24	Frame assembly
25	Clamping feed neck assembly
26	Two-piece grips

**SUPPORT (27-31)**

27	Our promise
28	Notes





# WE GOT YOUR BACK!!!

OUR ARMY OF PLANET ECLIPSE PRO TECHS ATTEND PAINTBALL EVENTS ALL OVER THE WORLD TO MAKE SURE THAT YOU AND YOUR ECLIPSE MARKER ARE FIRING ON ALL CYLINDERS, AT ALL TIMES, IN ALL GAME SCENARIOS.

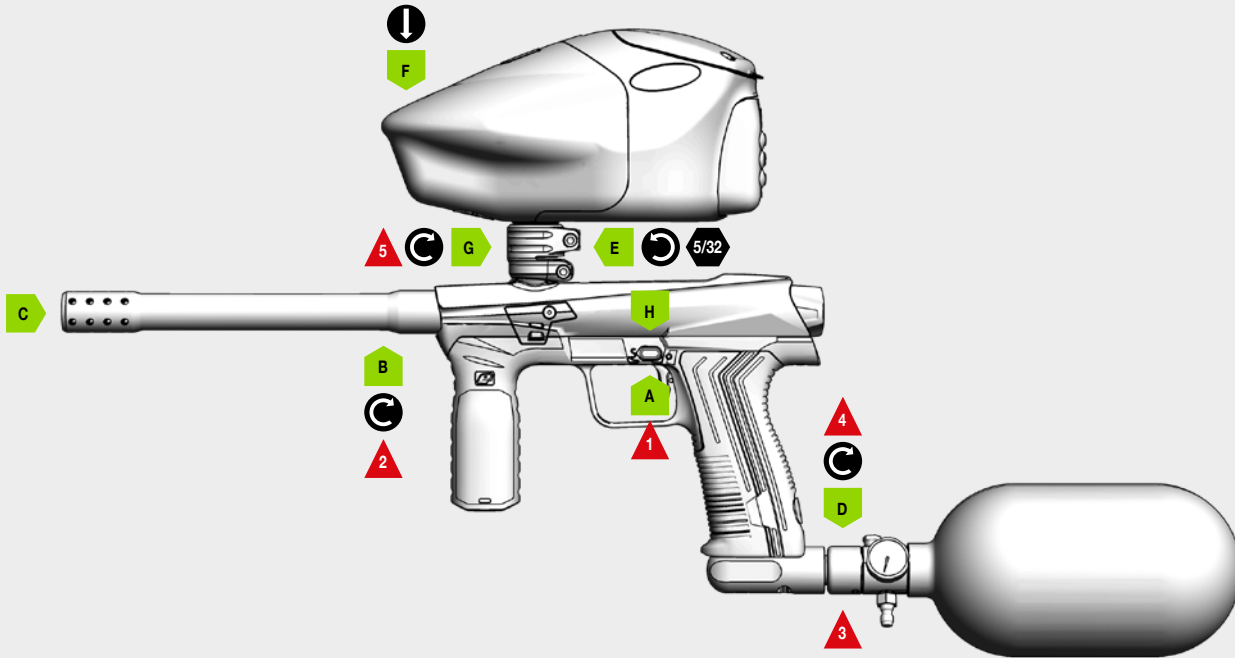


FOLLOW OUR OFFICIAL PLANET ECLIPSE SOCIAL MEDIA CHANNELS TO KEEP UP TO DATE WITH OUR TECH SUPPORT EVENTS CALENDAR.

# QUICK START

## SETTING UP THE EMEK

FIG-1



# QUICK START

## SETTING UP THE EMEK

### FIG-1

- A Turn the safety switch to SAFE (S) before you begin.**
- B Fit the Emek barrel.**  
Rotate the barrel clockwise into the marker body.
- C Attach a barrel blocking device for safety.**
- D Attach the preset air system.**  
Rotate the air system clockwise into the ASA body.
- E Loosen the clamping feed neck.**  
Open the feed neck lever away from the feed neck.  
Rotate the feed neck lever screw counter-clockwise.
- F Attach the loader.**  
If the feed neck is too tight, loosen the clamping feed neck more.
- G Secure the loader.**  
Close the feed neck lever to secure.  
Rotate the feed neck lever screw clockwise to tighten.
- H Turn the safety switch to FIRE (F).**  
The marker will now fire when the trigger is pulled.

- 1 IMPORTANT!** To enable SAFE/FIRE see page 8.
- 2 DO NOT** over-tighten the barrel.
- 3 IMPORTANT!** Always ensure marker is de-gassed when setting up.
- 4 NEVER** use CO2. Only use compressed air or Nitrogen.
- 5 DO NOT** over-tighten the feed neck. This may damage the EMEK.

## WARNING!



Always make sure that the marker is in SAFE mode with a barrel blocking device installed and that no paintballs are in the EMEK or loader before attaching an air system.

Compressed air and nitrogen systems can be extremely dangerous if handled or used incorrectly.

Only attach an air system certified for use within the country of use.

Never add lubricants or grease into the fill adaptor of the air system regulator.

Ensure that all screws are tightened and no parts are loose before installing an air system.

Do not pressurise the EMEK without the bolt system correctly installed, as high pressure gas will be emitted.

Do not install a compressed air system or load paintballs into the EMEK until you feel confident with your ability to handle the marker safely and responsibly.

# QUICK START

## THE EMEK SAFETY SWITCH - SAFE (S)

### FIG-1

The safety switch **A** is located on the left side of the Emek frame and is used to switch between SAFE (S) and FIRE (F).

#### Enabling SAFE (S):

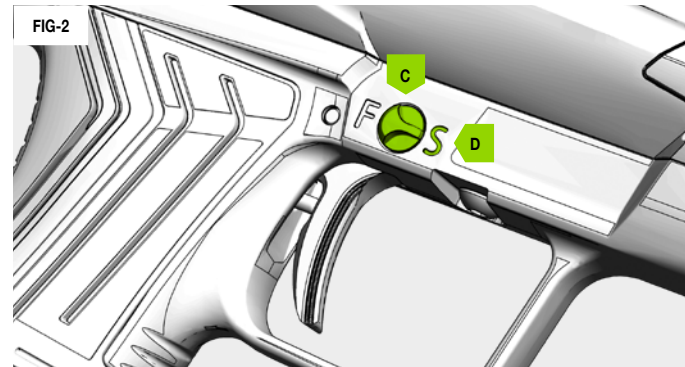
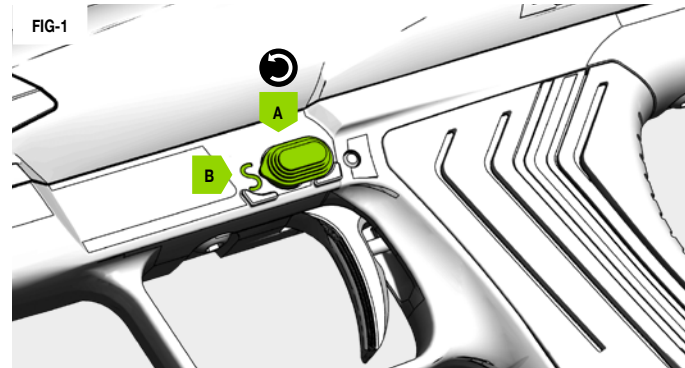
Rotate the safety switch **A** counter-clockwise until the S indicator **B** is revealed and the switch arrow points towards S. The trigger is now locked.

### FIG-2

SAFE (S) is also represented on the right side of the frame by the switch arrow **C** pointing towards the S indicator **D**.

#### Firing the EMEK

When the safety switch points towards S the marker is still live (if fitted with an air system), but the trigger is locked and cannot be pulled.



## WARNING!



When SAFE (S) is enabled the Emek is still a live marker until the air system has been fully removed.

Ensure that a barrel blocking device is always attached when the marker is set to SAFE (S).



# QUICK START

## THE EMEK SAFETY SWITCH - FIRE (F)

### FIG-1

The safety switch **A** is located on the left side of the Emek frame and is used to switch between SAFE (S) and FIRE (F).

### Enabling FIRE (F):

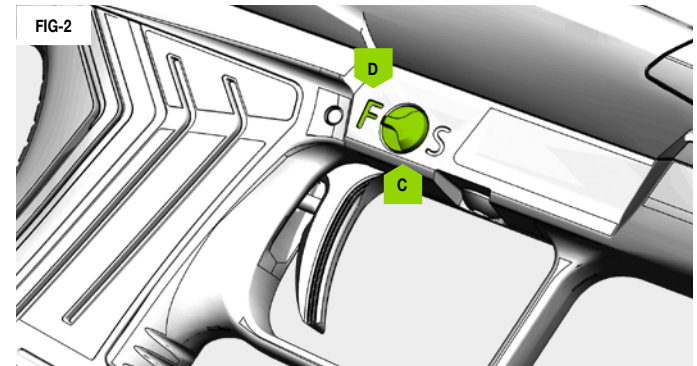
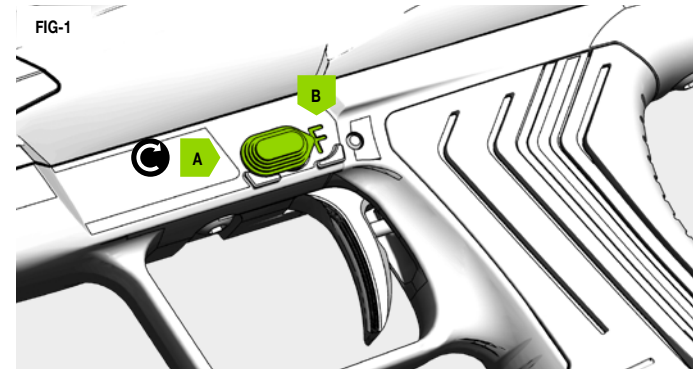
Rotate the safety switch **A** clockwise until the F indicator **B** is revealed and the switch arrow points towards F. The trigger is now unlocked.

### FIG-2

FIRE (F) is also represented on the right side of the frame by the switch arrow **C** pointing towards the F indicator **D**.

### Firing the EMEK

When the safety switch points towards F the marker is live (if fitted with an air system) and the trigger is unlocked. The marker will now fire when the trigger is pulled.



## WARNING!



When FIRE (F) is enabled the Emek is live and will fire with every pull of the trigger, if an air system is fitted.

Ensure that the Emek is set to SAFE (S) and a barrel blocking device is attached until you are ready to use the marker.

# QUICK START

## VELOCITY ADJUSTMENT

FIG-1

Insert a 1/8 hex key **A** into the velocity adjuster screw **B** to alter the velocity of the EMEK.

### Adjusting the velocity:

- 1 Turn the hex key clockwise to reduce velocity.
- 2 Turn the hex key counter-clockwise to increase velocity.
- 3 Fire two clearing shots after each velocity adjustment for an accurate velocity reading.

**1** **DO NOT** turn the adjuster screw in too far. This will prevent the EMEK from firing.

## WARNING!



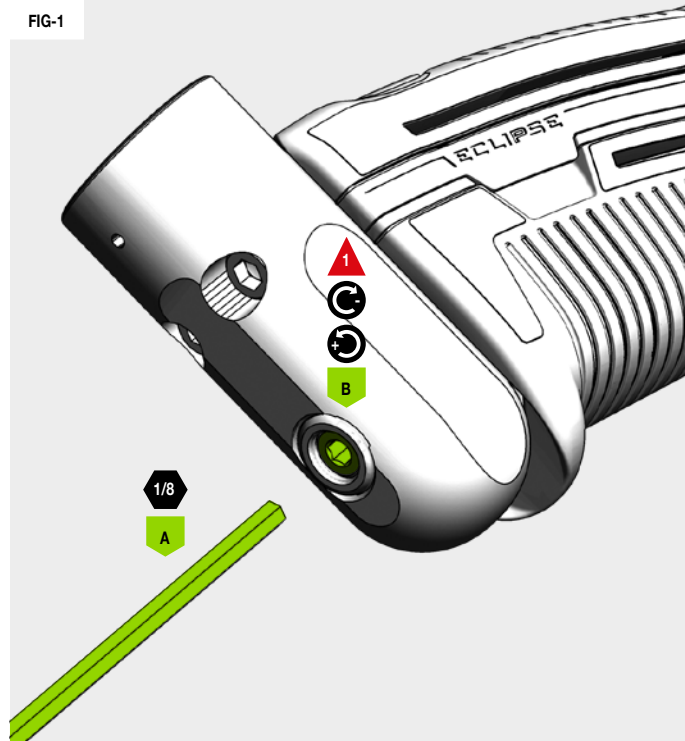
DO NOT exceed 300FPS.

ALWAYS wear correct protective equipment when firing your marker.

NEVER point your marker in the direction of other people when not on the field.

ALWAYS be aware of where the barrel is facing when adjusting the velocity.

FIG-1



The Emek rubber detents (see Fig-2) hold each paintball in place until ready to fire. This prevents paintballs from rolling down the barrel and maintains feed consistency.

These can be removed for cleaning or replacement.

### FIG-1

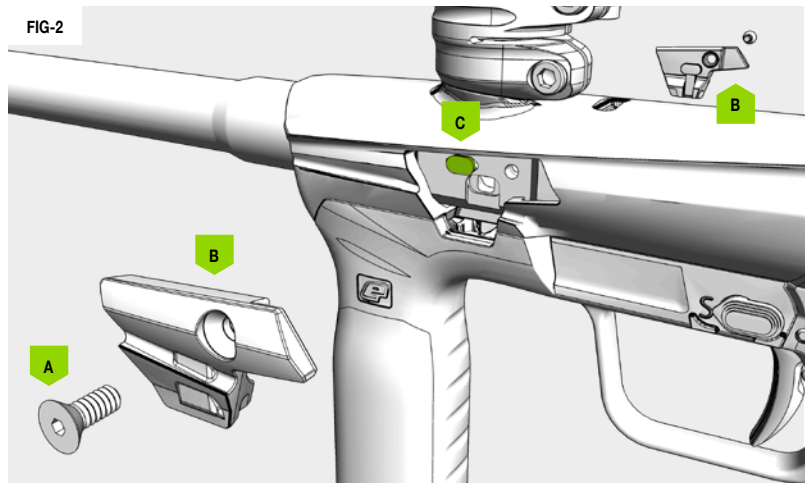
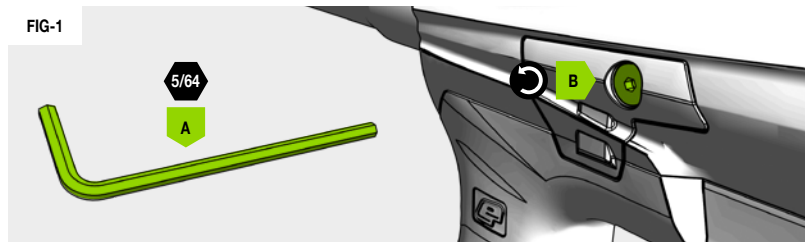
Use a 5/64" (2mm) hex key **A** to remove the breech cover screw **B** by rotating counter-clockwise. This will release the breech cover (see Fig-2).

### FIG-2

To remove the detents **C** simply use a small hex key, or your finger tips, to gently lift the rubber from its seat.

- A** Breech cover screw  
6-32UNC x 5/16  
countersunk socket screws
- B** Breech cover
- C** Rubber detent

The elements within this diagram apply to both sides of the marker.





# QUICK START

## UNLOADING THE EMEK

FIG-1

- A Turn the safety switch to SAFE (S) before you begin.**
- B Attach a barrel blocking device for safety.**
- C Remove the preset air system.**  
Rotate the air system counter-clockwise from the ASA body.
- D Loosen the clamping feed neck.**  
Open the feed neck lever away from the feed neck.  
Rotate the feed neck lever screw counter-clockwise.
- E Remove the loader.**  
If the feed neck is too tight, loosen the clamping feed neck more.
- F Remove the Emek barrel.**  
Rotate the barrel counter-clockwise from the marker body.

- 1 IMPORTANT!** To enable SAFE/FIRE see page 8.
- 2 IMPORTANT!** Extra precaution to avoid injury.
- 3 IMPORTANT!** Always remove air system before unloading.
- 4 IMPORTANT!** Always remove any paintballs from the breech of the marker once the loader has been removed.

### **WARNING!**



Always make sure SAFE mode is enabled with a barrel blocking device installed and that no paintballs are in the breech or loader before unloading.

Compressed air and nitrogen systems can be extremely dangerous if handled or used incorrectly.

NEVER leave the EMEK gassed up when unloading.

NEVER point your marker in the direction of other people when not on the field.

Remove any paintballs from the breech before storing your EMEK.

# QUICK START

## STORAGE AND TRANSPORTATION

- 1 Your EMEK must be clear of all paint and propellant during transportation or storage.
- 2 Make sure the safety switch is turned to SAFE (S).
- 3 Remove the barrel from the marker.
- 4 Make sure the marker is clean of any paint residue, dirt and moisture.
- 5 Store your EMEK in a clean, cool, dry place.
- 6 Keep your EMEK away from any unauthorized or unsafe users.
- 7 Protect your EMEK from excessive heat during transportation.
- 8 When transporting a paintball marker by air, check with the airline regarding their policies on transporting paintball equipment as hold luggage before arriving at the airport.
- 9 Observe and obey all local and national laws concerning the transportation of paintball markers.
- 10 Use the box in which the marker was originally supplied to protect the marker against rough handling during transport.

### WARNING!



Never carry your EMEK un-cased when not on a playing field. The non-playing public and law enforcement personnel may not be able to distinguish between a paintball marker and a real firearm. For your own safety and to protect the image of paintball, always carry the Eclipse EMEK (or any other paintball marker) in a suitable marker case such as the one in which it was supplied.

# MAINTENANCE

## ONLINE MAINTENANCE VIDEOS

To help demonstrate how to maintain and service essential parts of the EMEK we've created a collection of dedicated marker maintenance videos to guide the user through each step.

From basic, to more advanced parts of the EMEK, we've got your back.

Visit our **Tech Room** YouTube channel and check out the EMEK Maintenance playlist.

[www.youtube.com/user/planetecclipsetv](http://www.youtube.com/user/planetecclipsetv)



# MAINTENANCE

## FAULT FINDING TABLES

SYMPTOM	POSSIBLE CAUSE	SOLUTION
The EMEK leaks from the three-way.	The gasket between the three-way body and gun body, o-ring on air transfer pipe or the gasket under the three-way plate are damaged or dirty.	Ensure the gasket is seated correctly. Replace the gaskets if damaged using EMEK parts kit. Check condition of the air transfer pipe 010 NBR70 o-ring.
	Three-way is over-pressurised.	Check the output pressure of the inline regulator and adjust accordingly. Clean and inspect the inline regulator assembly paying particular attention to the piston tip and regulator seal. Replace damaged components as necessary.
	Damaged or incorrect seals on the three-way spool.	Replace and/or lubricate three-way spool seals.
The EMEK leaks down the barrel.	Dirty or damaged can o-rings.	Clean and lubricate or replace 020 NBR70 and 017 NBR o-rings on the front of the can.
	Dirty or damaged o-rings on the spool.	Clean and lubricate or replace the 011 NBR70 and 012 NBR70 o-rings on the main spool.
	Dirty or damaged bolt o-rings.	Clean and lubricate or replace 14x2 NBR70 o-ring on the back of the bolt.
	Dirty or damaged rear bolt guide o-ring.	Clean and lubricate or replace 14x2 NBR70 o-ring towards the back of the bolt guide.
The marker is breaking paintballs in the barrel or breech.	The ball detents are damaged or missing.	Replace the ball detents.
	The force setting of the loader is too high.	Reduce the loader force feed setting.
	The paint is poor quality.	Try a higher grade of paint.
	The velocity is set too high.	Check and adjust the velocity of the EMEK.



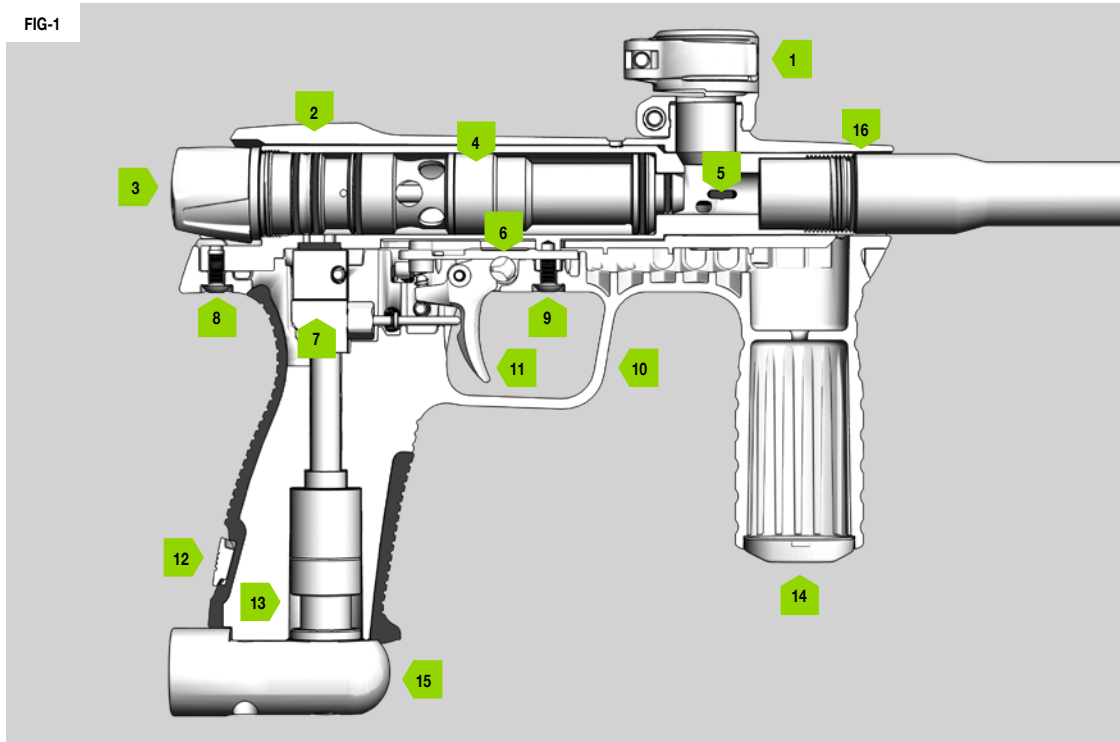
# MAINTENANCE

## FAULT FINDING TABLES

SYMPTOM	POSSIBLE CAUSE	SOLUTION
The EMEK does not fire.	The air system is not fully engaged.	Screw in the air system until it fully engages.
	The three-way is damaged.	Replace the three-way.
Low constant velocity.	The inline regulator output pressure set too low.	Increase the output pressure of the inline regulator.
High velocity first shot.	The inline regulator pressure is creeping.	Strip and clean the inline regulator replacing the regulator seal inside the regulator adjuster assembly.
Velocity drop-off during rapid fire.	Air system regulator does not have high enough flow.	Try another air system.
	Dirty/partially blocked inline regulator.	Strip, clean, lubricate and rebuild the inline regulator.
Two or more balls are being fed into the breach.	Worn, damaged or missing ball detents.	Change the rubber ball detent.
	The feed force too high from loader.	Adjust loader settings/use lower force loader.
EMEK is inconsistent.	The inline regulator is dirty.	Strip and clean inline regulator, replace regulator seal.
	Poor quality paintballs.	Use better quality paintballs.
	Poor paintball size to barrel bore match.	Use a closer paintball to barrel bore size.
	Inconsistent air supply from air system.	Service the air system.
EMEK is inefficient.	Poor paintball size to barrel bore match	Use a closer paintball to barrel bore size.

If an issue with the EMEK cannot be solved using the fault finding guide, contact your nearest Eclipse Service Centre for assistance.

FIG-1



---

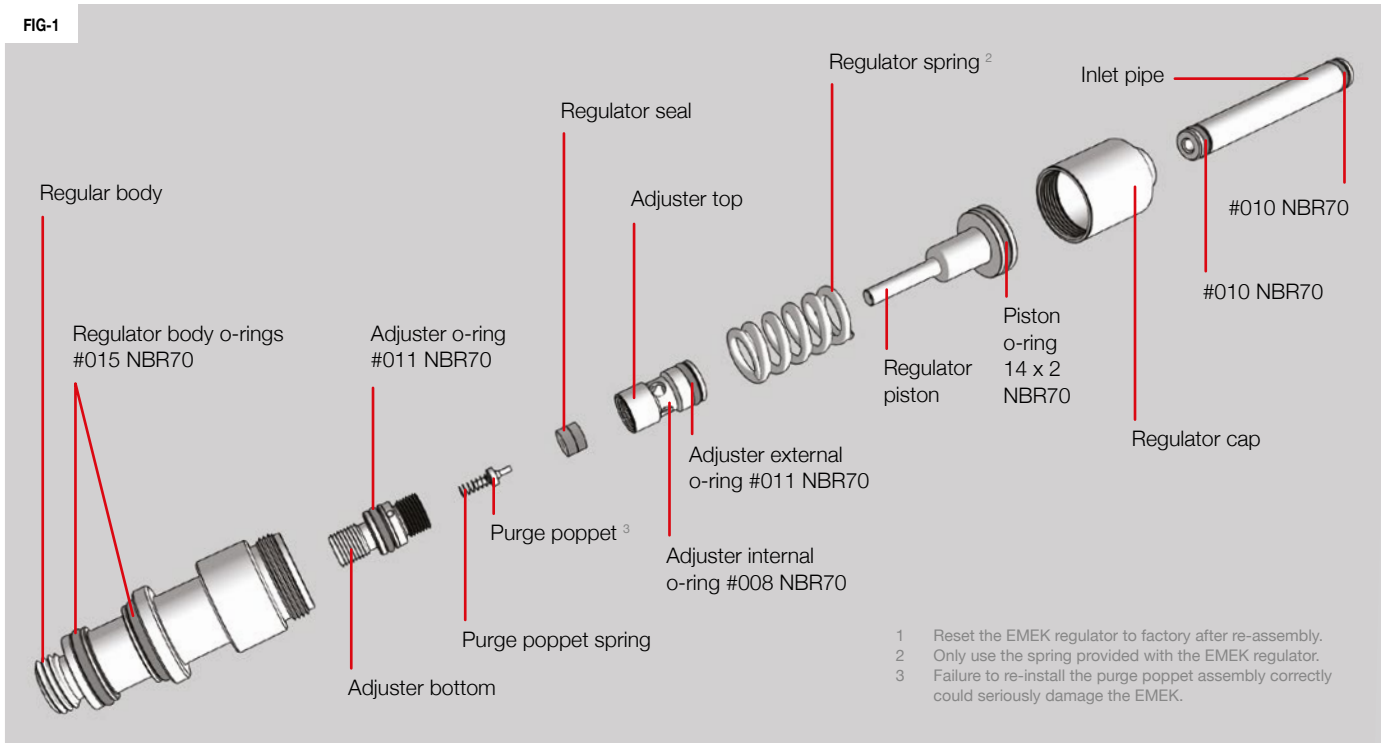
**FIG-1**

- |   |                             |    |                          |
|---|-----------------------------|----|--------------------------|
| 1 | Clamping feed tube assembly | 9  | Front frame screw        |
| 2 | Marker body shell           | 10 | Frame assembly           |
| 3 | Back cap                    | 11 | Trigger assembly         |
| 4 | Bolt assembly               | 12 | Grip retaining clip      |
| 5 | Rubber detent               | 13 | Regulator assembly       |
| 6 | Safety switch               | 14 | Foregrip                 |
| 7 | Three-way assembly          | 15 | ASA assembly             |
| 8 | Rear frame screw            | 16 | Barrel o-ring #016 NBR70 |

# TECHNICAL

## EMEK INLINE REGULATOR <sup>1</sup>

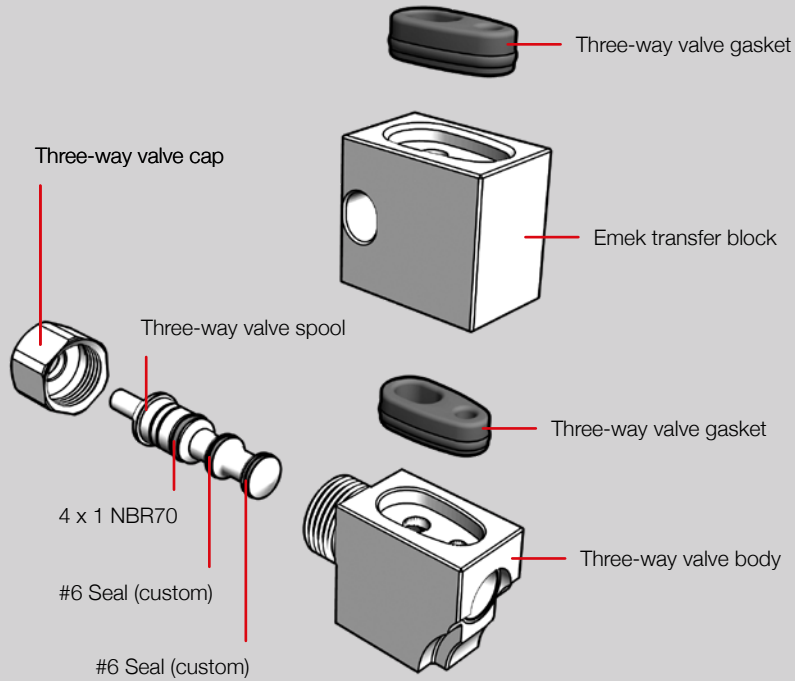
FIG-1



# TECHNICAL

## THREE-WAY ASSEMBLY

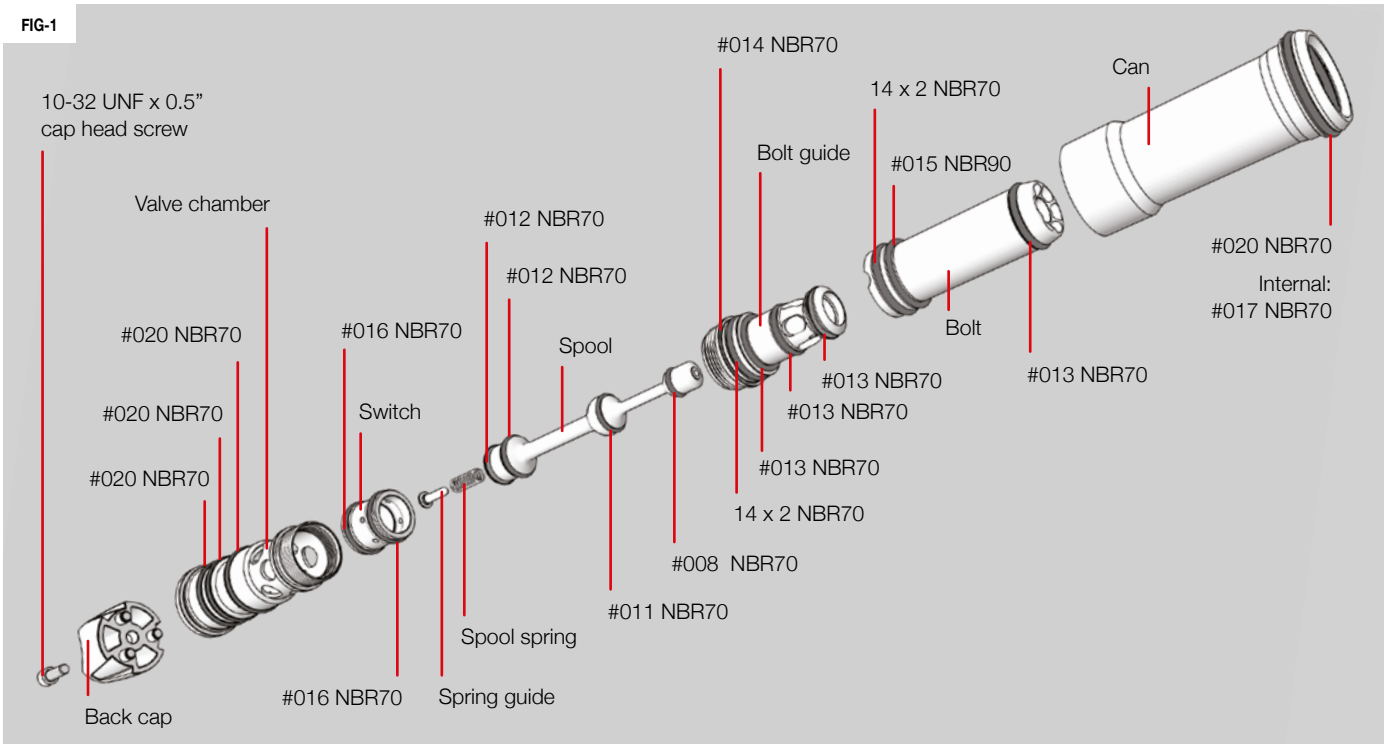
FIG-1



# TECHNICAL

## BOLT ASSEMBLY (68CAL)

FIG-1



# TECHNICAL BOLT ASSEMBLY (50CAL)

FIG-1

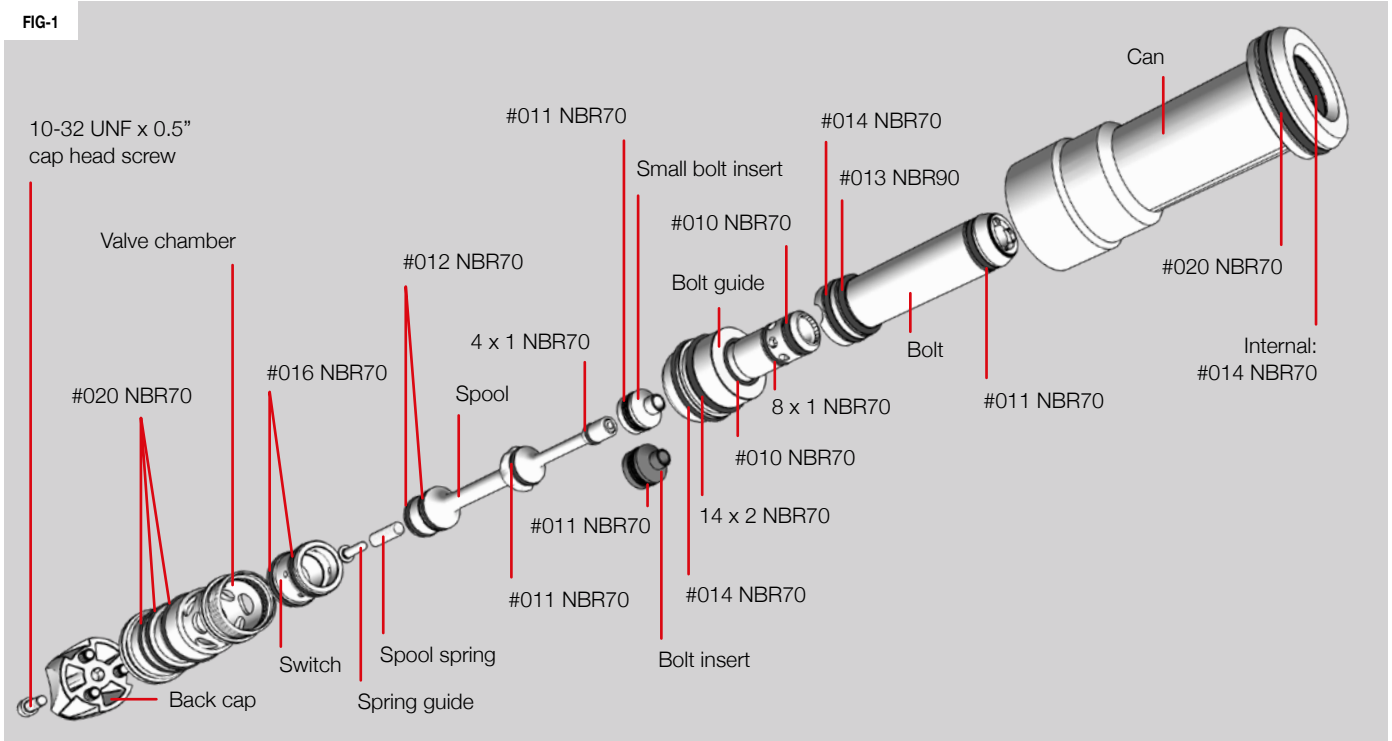
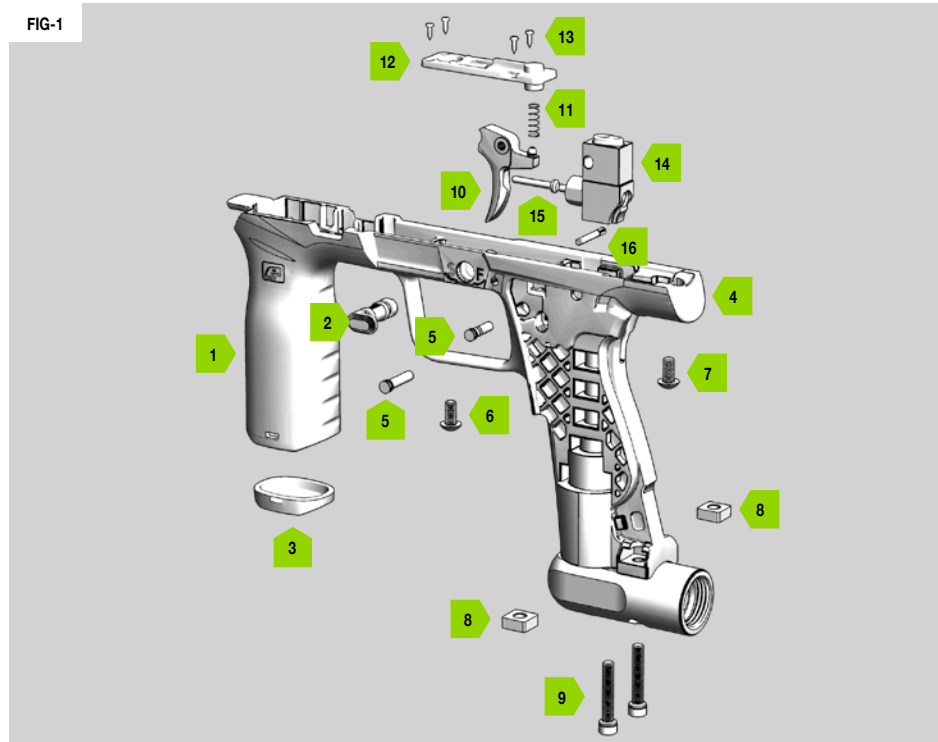


FIG-1

- 1 Foregrip
- 2 Safety switch
- 3 Foregrip cap
- 4 Frame assembly
- 5 Three-way body pins and 3x1 NBR70 o-ring
- 6 Front frame screw
- 7 Rear frame screw
- 8 ASA retaining nuts
- 9 ASA screws  
10-32 UNF x 1" cap head socket
- 10 Trigger assembly
- 11 Trigger spring
- 12 Trigger plate
- 13 Trigger plate retaining screws
- 14 Three-way assembly
- 15 Three-way push pin
- 16 Trigger pin

FIG-1



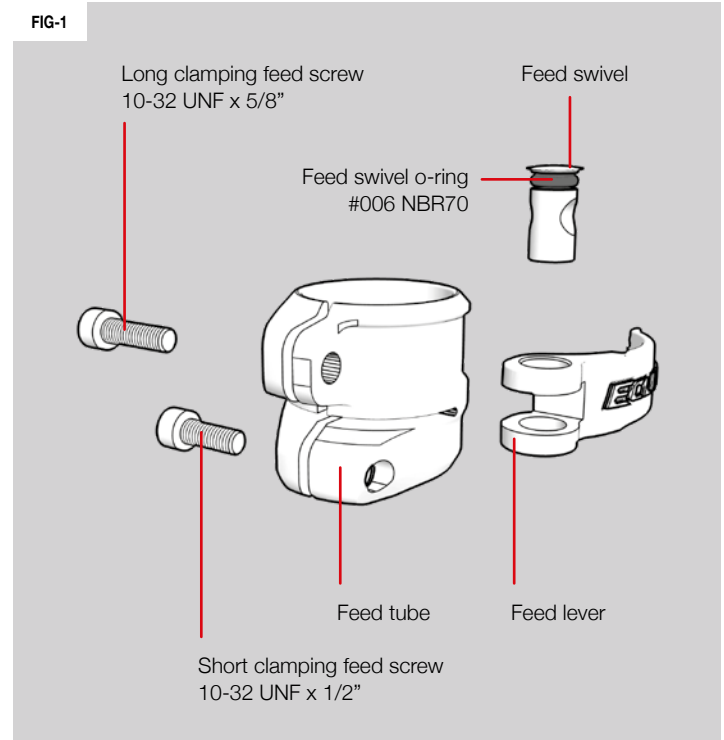


# TECHNICAL

## CLAMPING FEED NECK ASSEMBLY

**FIG-1**

The EMEK clamping feed neck uses our patented Deftek system, meaning the feedneck is designed to be slightly offset to neutralise any paintball bounce-back, providing the optimum paintball feed system.

**FIG-1**

# TECHNICAL

## TWO-PIECE GRIPS

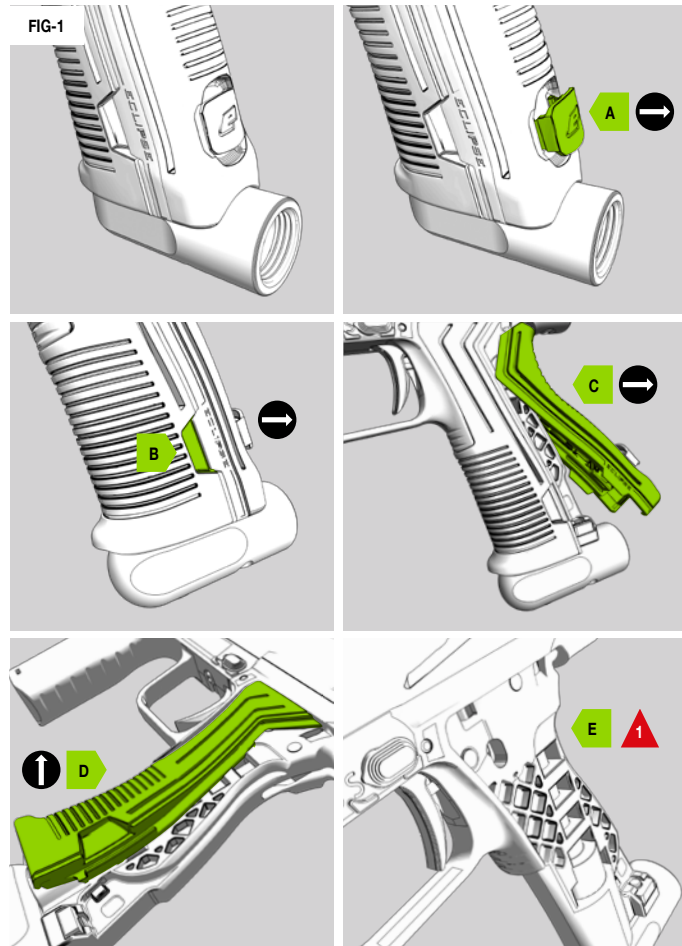
The EMEK's tool-less two-piece grip system makes it incredibly easy to remove and clean the grips after a big day out in the field.

### FIG-1

- A** Locate and pull back the rear grip locking tab.
- B** Use the finger recess to help release the rear grip section.
- C** Once released, fully remove the rear grip section from the frame.
- D** The front grip section can now be released and removed.
- E** You can now easily access the frame and separate grip pieces for thorough cleaning.

Repeat the steps in reverse order to reattach the grips to the frame.

- 1** **BE CAREFUL** when cleaning the frame, there are exposed operational elements that may be affected if wet.





### SUPPORT

As an Eclipse customer you will have access to our worldwide technical support network that will help you with any technical problems from localised service centres to on-site\* tech support.



### WARRANTY

Our exceptional 12 month\* manufacturer's warranty backed by our online warranty system offers peace of mind and ensures your claim will be repaired or replaced in a snap!



### QUALITY

All Eclipse products undergo meticulous checks by experienced specialists who care about the product that arrives at your door. Stringent quality control and the use of precision materials equals a quality product.



### STANDARD

Your Eclipse marker is awesome and requires no after market parts, however, for genuine Eclipse accessories that compliment your playing preference or individual style consult your local Eclipse Dealer for upgrade options.

For more information about our Planet Eclipse Approved Tech Centres, visit our servicing page online:

**[PLANETECLIPSE.COM/SITE/SERVICE-CENTRES](https://www.planeteclipse.com/site/service-centres)**

\* Conditions apply, see online policies for full details at [planeteclipse.com](https://www.planeteclipse.com)

**A**

Air system: **07,13,17**  
ASA: **07,13,19,24**

**B**

Back cap: **19,22,23**  
Barrel: **02,07,10,13,14,16,17**  
Bolt assembly: **04,19**  
Breech cover: **11**

**C**

Clamping feed neck: **07,13,25**

**D**

Detent: **11,17,19**

**F**

Feed tube: **02,19**  
F indicator: **09**  
Fire: **07,08,09,13**  
Foregrip: **19,24**  
Frame screw: **19,24**

**G**

Grip retaining clip: **19**  
Grips: **04,26**

**I**

Inline regulator: **04,16,17,20**

**L**

Loader: **07,13,16,17**

**M**

Maintenance: **02,04,15**

**O**

O-ring: **16,19,20,24,25**

**P**

Preset air system: **07,13**

**R**

Register: **30**  
Regulator assembly: **19**

**S**

Safe: **02,07,08,09,13,14**  
Safety switch: **04,07,08,09,13,14,19,24**  
S indicator: **08**

**T**

Three-way assembly: **04,19,24**  
Trigger: **11**  
Trigger assembly: **19,24**  
Trigger pin: **24**  
Trigger plate: **24**

**V**

Velocity: **03,10,16,17**

**W**

Warning: **02,03,07,08,09,10,13,14**  
Warranty: **27,29**



# YOUR WARRANTY REGISTRATION CARD.

Planet Eclipse offers a 12 month limited warranty period\* on the Eclipse® electro-pneumatic marker. The Eclipse® electro-pneumatic marker is warranted to be free from all manufacturing and production defects for a period of 12 months from the time of original purchase\*\*. Warranty cover is dependent on successful completion, and receipt by Planet Eclipse Limited, of warranty registration and proof of purchase, either in electronic form on [www.planeteclipse.com](http://www.planeteclipse.com) or via email using the warranty card included in every Eclipse® electro-pneumatic marker manual. Warranty exemptions include, but are not limited to, accidental damage, wear and tear, unreasonable force, surface finish and perishable components such as o-rings, valves, screws, solenoids and break beam sensor units (at our discretion). By completing and returning this warranty card you agree to our privacy policy\*\*\*.

I verify that I am at least 18 years of age and I have read the manual supplied with my Eclipse® electro-pneumatic marker and I understand the safety cautions and warnings that it contains. (Contact your dealer or Planet Eclipse Limited directly if you need a replacement set of instructions.

Full name:	Price (e.g. \$500.00):
Address:	Colour:
	Where did you hear about your Eclipse marker?
	Magazines <input type="checkbox"/> Internet <input type="checkbox"/> Friends <input type="checkbox"/> DVD/Video <input type="checkbox"/>
	Other (please specify):
City:	Why buy Eclipse?
Postal/Zip Code:	<b>WRITE SERIAL NUMBER HERE</b>  <input type="text"/>
State:	
Country:	
Contact No:	
Email:	
Date of purchase (DD/MM/YY):	
Purchased from:	

Please complete and return this form with proof of purchase, within 14 days so that we may validate your 12 month limited warranty on your Eclipse® manufactured product. Please return to the address on the reverse of this form.

\* For full terms and conditions that apply to the limited warranty visit [www.planeteclipse.com](http://www.planeteclipse.com)

\*\* Limited warranty is valid for 12 months from the proof of purchase date, or 12 months from the date of manufacture if no proof of purchase is provided.

\*\*\* Full details of the Planet Eclipse privacy policy can be found at [www.planeteclipse.com](http://www.planeteclipse.com)



**GET MORE - PLANETECLIPSE.COM**

LICK.  
STICK.  
SEND.

PLANET ECLIPSE  
130 FRANKLIN STREET  
BUILDING L4 & L5  
WARREN  
RHODE ISLAND  
02885  
U.S.A.

TO BENEFIT FROM OUR INDUSTRY-LEADING  
GLOBAL TECH SUPPORT PLEASE REGISTER  
YOUR MARKER ONLINE TODAY

**WARRANTY.PLANETECLIPSE.COM**



—



**GET MORE**  
**PLANETECLIPSE.COM**



**THIS PRODUCT IS COVERED BY AND/OR LICENSED UNDER ONE OR MORE OF THE FOLLOWING PATENTS:**

**G.B. PATENTS:**

2,342,710; 2,345,953; 2,352,022; 2,391,292; 2,391,063;

**U.S. PATENTS:**

7,836,873; 7,603,995; 7,073,284; 8,104,463; 7,509,953; 7,921,839; 7,089,697; 7,866,307; 8,082,912; 7,076,906; 7,607,424; 7,980,238; 8,960,175; 8,528,877; 8,201,547; 8,397,706; 8,210,160; 7,073,284; 6,311,682; 6,748,938; 6,860,259; 6,941,693; 6,973,748; 5,881,707; 5,967,133; 6,035,843; 6,474,326; 6,637,421; 6,644,295; 6,810,871; 6,901,923; 7,121,272; 7,100,593; 7,610,908; 7,603,997; 7,946,285; 6,349,711; 7,044,119; 7,185,646; 7,461,646; 7,556,032; 7,591,262; 7,617,819; 7,617,820; 7,640,925; 7,640,926; 7,866,308;

**APPLICATION NUMBERS:**

12/256,832; 12/613,958; 12/493,777; 11/654,721; 11/747,107; 12/503,504; 11/781,821; 60/832,548; 11/965,886; 10/280,115

Additional U.S. and International Patents may be pending.



802.066.A-000

**USA**

130 Franklin Street  
Building L4 & L5  
Warren, RI, 02885, USA  
Call: +1 401 247 9061  
info.usa@planetecclipse.com

**UK**

Unit 14 Premier Park, Acheson Way  
Trafford Park Road, Trafford Park  
Manchester, M17 1GA, England  
Call: +44(0) 161 872 5572  
info.europe@planetecclipse.com

© Planet Eclipse Ltd. Eclipse, Planet Eclipse, the E Logo Device, Geo, CS2, CS1, CSR, Ego, LV1, LVR, Etek, Gtek, Gtek160R, Etha, EMEK and EMC are all either design trademarks, registered trademarks or trademarks of Planet Eclipse Ltd. All other trademarks are property of their respective owners.

2194\_EN\_V1\_EMEK-Manual