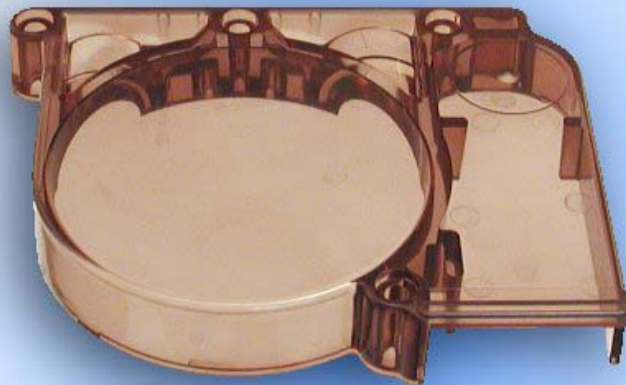


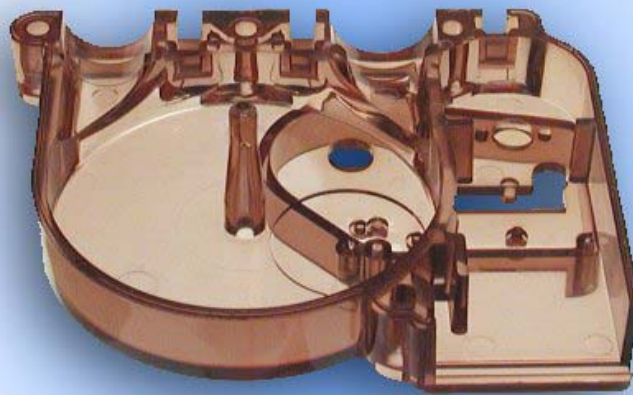
Part #1295
Warp Housing Front



Front housing for Warp Feed, specify color when ordering. Clear can be colored with Rit Dye.

[Back to Top](#)

Part #1296
Warp Housing Back



Back housing for Warp Feed without sensor.
Specify color when ordering, clear can be
colored with Rit Dye.

[Back to Top](#)

Part #1256
Warp Housing Screw



Standard 10-32 socket head cap screws 1.5 inches long. Get them at your hardware store.

[Back to Top](#)

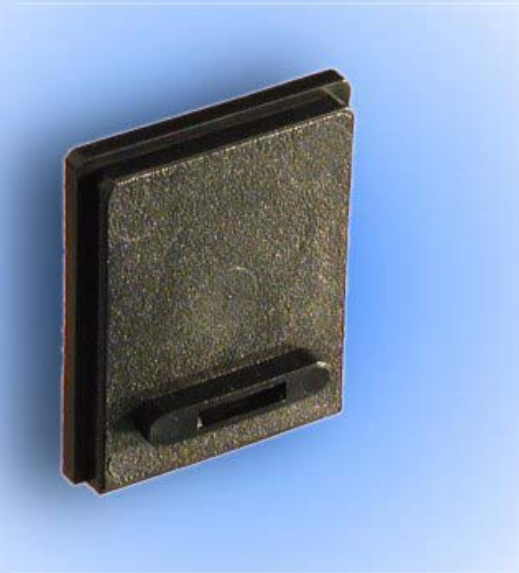
Part #1257
Warp Housing Nut



Standard 10-32 nuts. Get them at any hardware store.

[Back to Top](#)

Part #1341
Warp Battery Lid - Black



Battery lid tension can be adjusted by trimming hump on the bottom of the lid.

[Back to Top](#)

Part #1343
Warp Lid Black



Back cover plate for the PC board and motor.

[Back to Top](#)

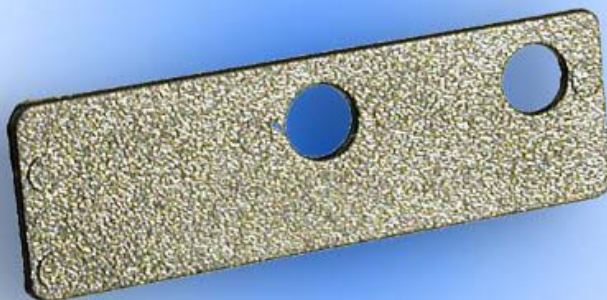
Part #1260
Warp Cover Screw



Special plastic screws. Do not use substitutes.

[Back to Top](#)

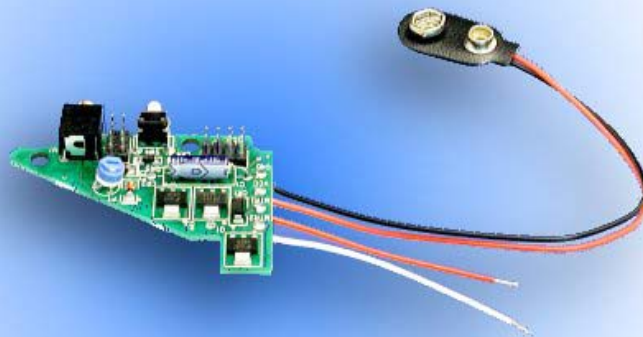
Part #1347
Warp Dust Cover



Dust cover goes on with the circuit board.

[Back to Top](#)

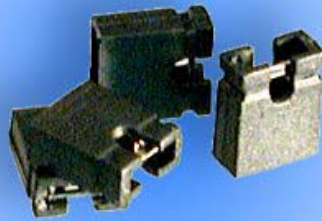
Part #1323
Warp PC Board



Board that controls the Warp. There are two springs under the board that make contact with the sensor; don't lose them.

[Back to Top](#)

Part #1358
Warp Shunt (Jumper)



Used to program the Warp to set dwell time and input signal.

[Back to Top](#)

Part #1353
Warp Board Mount Screw



Screws that mount the PC board. Do NOT over tighten.

[Back to Top](#)

Part #1418
Warp Contact Spring

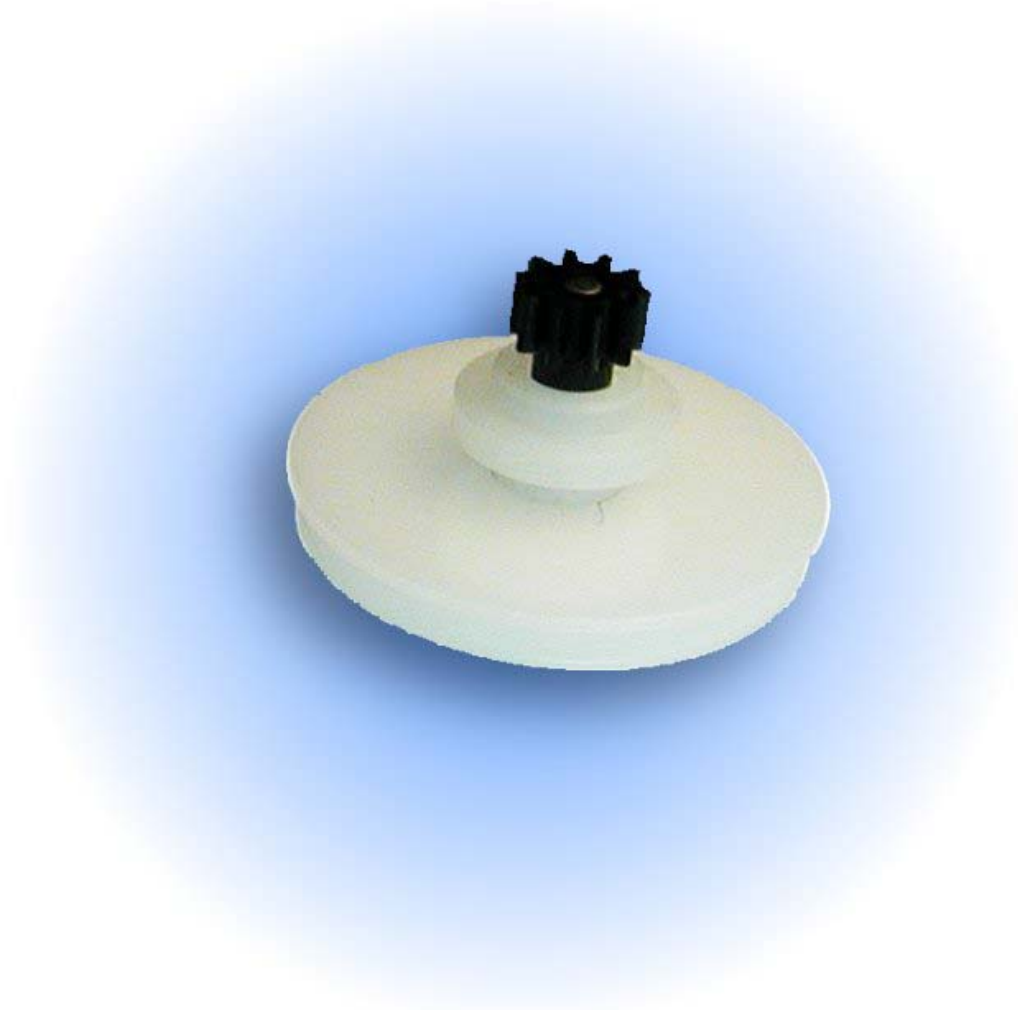


Shown larger than actual size.

Two of these small springs make contact with the sensor and the bottom of the PC board.
About 1/8" long in real life.

[Back to top](#)

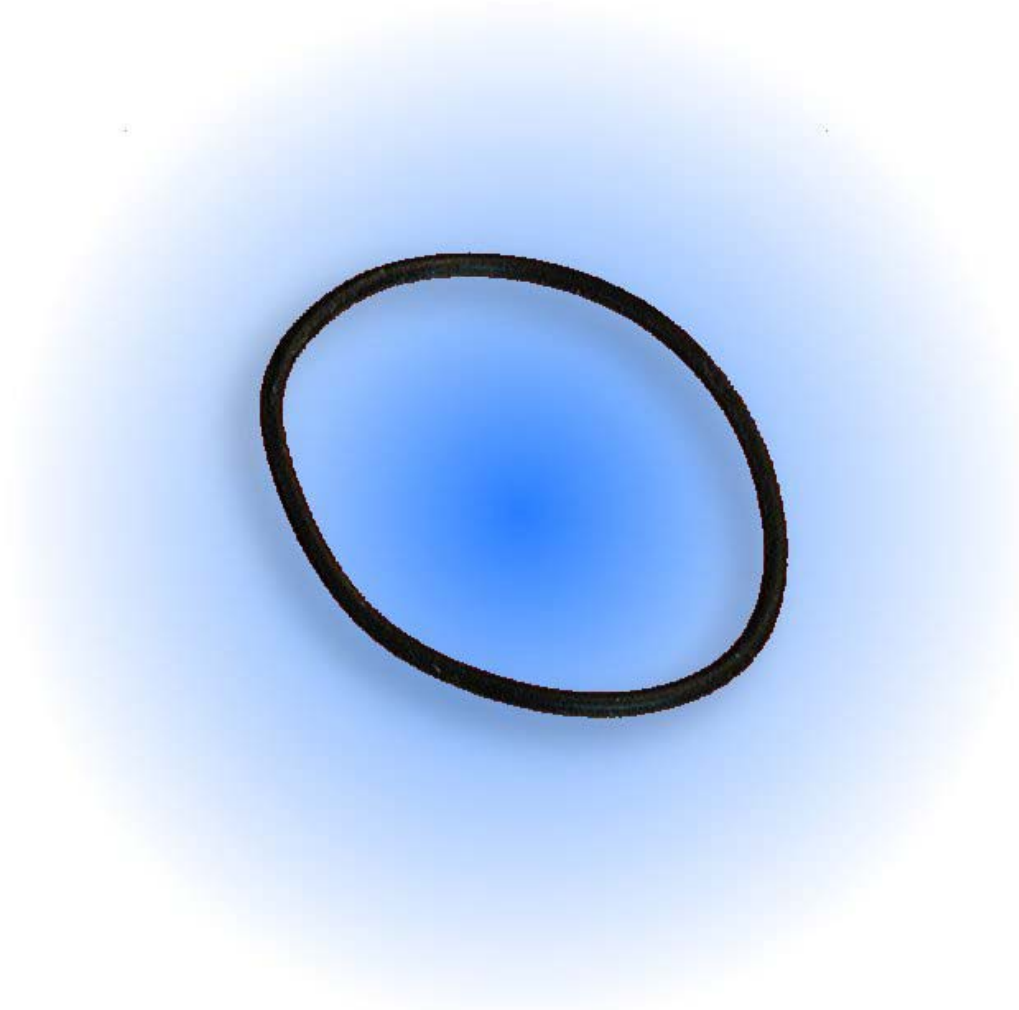
Part #1467
Axle Assembly



Pulley assembly inside Warp snap fits in.

[Back to Top](#)

Part #1336
Warp Pulley Drive O-Ring



O-ring acts as a drive belt to turn Warp.

[Back to Top](#)

Part #1421
Warp Sensor



Sensor must be riveted in place; please call
Airgun Designs if you have problems.

[Back to Top](#)

Part #1463
Motor Assembly



Motor comes with pulley assembled as a unit.
Connections must be soldered.

[Back to Top](#)

Part #1298
Warp Motor Mount Screw



[Back to Top](#)

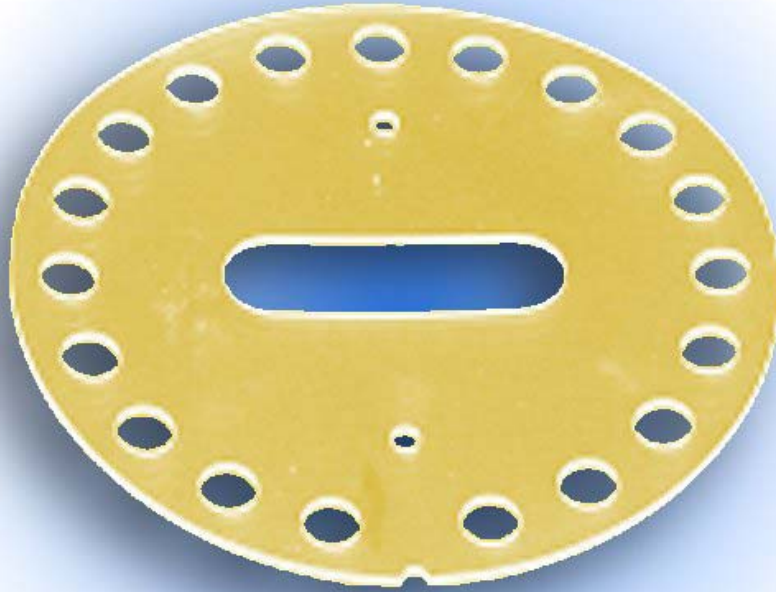
Part #1338
Warp Plate



When assembling these parts make sure there is equal tension on both screws.

[Back to Top](#)

Part #1228
Warp Urethane Disc



Two disks in each unit, replace as a pair.

[Back to Top](#)

Part #1339
Warp Center Piece



Center hub of feed wheel.

[Back to Top](#)

Part #1299
Warp Feed Gear 1



Make sure you tighten both mounting screws
equally when assembling feed wheel.

[Back to Top](#)

Part #1259
Warp Center Hub Screw



Standard 10-32 socket head cap screws can be found at your local hardware store.

[Back to Top](#)

Part #1251
Warp Diverter Plate



Diverter plate directs the paintballs into the exit hose.

[Back to Top](#)

Part #1465
Warp Mount



One piece aluminum mounting plate for Warp.
Adjustment slots at each end.

[Back to Top](#)

Part #1258
Warp Mount Screw



Standard 10-32 socket head cap screws 5/8ths of an inch long. Get them at your local hardware store.

[Back to Top](#)

Part #1289
Warp Feed Adapter Lower



Fits into the output port of the Warp.

[Back to Top](#)

Part #1288
Warp Feed Adapter Upper



Fits the marker's $\frac{3}{4}$ inch feed tube to the Warp feed hose.

[Back to Top](#)

Part #1395
PF Plug "P" Style Long



Used when feeding the Warp hose into the bottom of the power feed tube. Allows switching back and forth between Warp and hopper.

[Back to Top](#)

Part #1387
PF Plug "P" Style Short



Parabolic Power Feed Plug is the standard part that comes with the Automag. Replaces original plug and improves feed rates.

[Back to Top](#)

Part #1241
Warp Feed Adapter – 90 Degree



90 Degree Feed Adaptor is used with vertical feed markers to keep the feed hose low on the marker.

[Back to Top](#)

Part #1566
Warp Feed Tubing, Black



Sold by the foot, uses o-rings in the hose grooves to insure a tight fit.

[Back to Top](#)

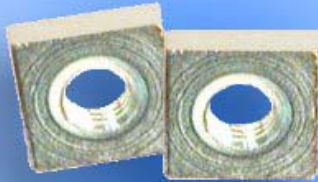
Part #990
Warp Feed Hose O-Ring



Hose O-Rings for the Warp.
Use three on each end of the
Warp Hose to insure a tight fit.

[Back to Top](#)

Part #159
Square Nut



Standard 10-32 square nuts available at your local hardware store.

[Back to Top](#)

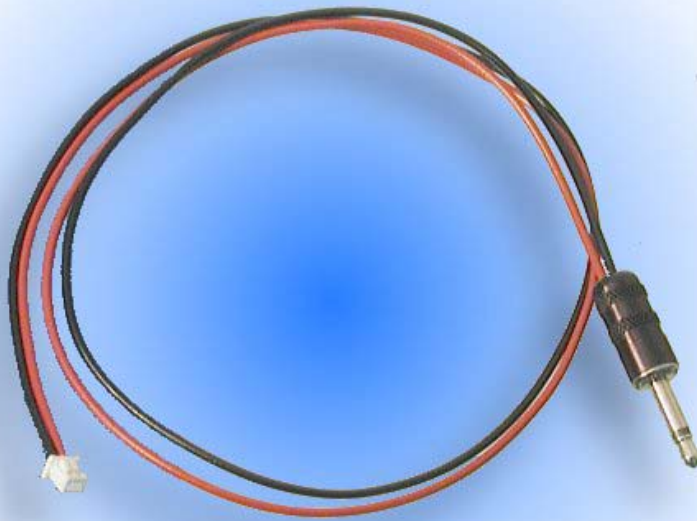
Part #1355
Emag Warp Harness



This interface cable plugs into the Intellifeed port on the Emag and the input port on the Warp Feed. Every time the marker shoots it tells the Warp to spin. Very reliable and a must have for tournament use.

[Back to Top](#)

Part #1567
Emag Warp Harness - LH



Same as the regular Interlink Cable but longer for mounting the Warp on the left side of the marker.

[Back to Top](#)

www.airgun.com
www.automags.org
Airgun-UK

Email to: office@airgun.com

Office hours:
9:00 am - 5:00 pm
(Central Time)
Monday through Friday
Office Tel: (847) 520-7507
Office Fax: (847) 520-7848

Tech Support hours:
10:00 am to 11:30 am,
1:00 pm - 4:00 pm
(Central Time)
Monday through Friday

Tech Support Tel:
(847) 520-7225



Back to Top