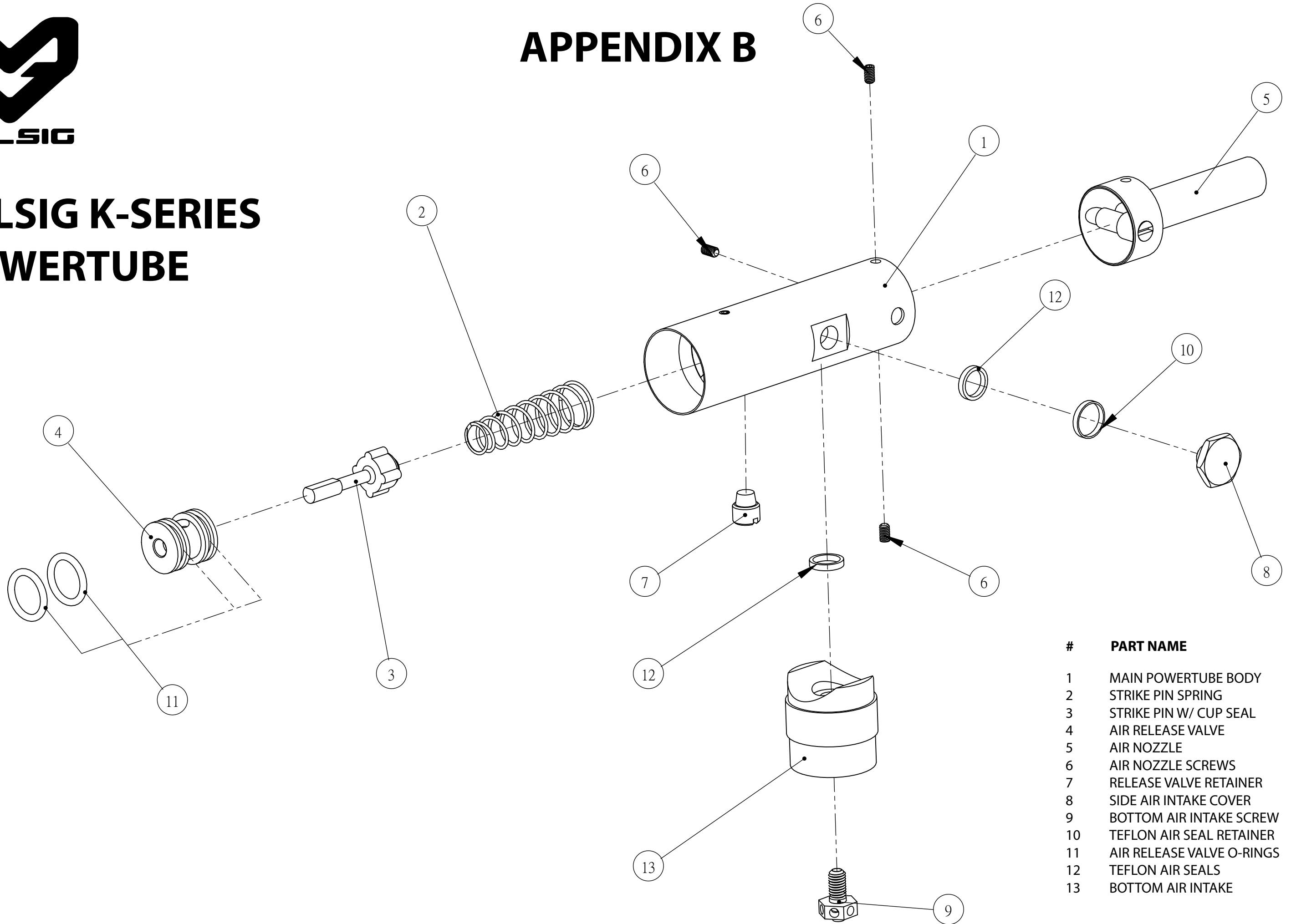




MILSIG

MILSIG K-SERIES POWERTUBE

APPENDIX B



#	PART NAME
1	MAIN POWERTUBE BODY
2	STRIKE PIN SPRING
3	STRIKE PIN W/ CUP SEAL
4	AIR RELEASE VALVE
5	AIR NOZZLE
6	AIR NOZZLE SCREWS
7	RELEASE VALVE RETAINER
8	SIDE AIR INTAKE COVER
9	BOTTOM AIR INTAKE SCREW
10	TEFLON AIR SEAL RETAINER
11	AIR RELEASE VALVE O-RINGS
12	TEFLON AIR SEALS
13	BOTTOM AIR INTAKE