

⚠ WARNING

This paintball marker is intended for sale to adults only, for use in compliance with all applicable laws and regulations. Adult supervision is recommended at all times whenever a minor is handling this paintball marker. Protective goggles and headgear specifically designed for paintball must be worn by all persons within range when a paintball marker is in use. Paintball safety rules must be followed at all times.

⚠ WARNING

THE PMI PIRANHA™ PAINTBALL MARKER IS NOT A TOY. MISUSE MAY CAUSE SERIOUS INJURY OR DEATH. EYE PROTECTION DESIGNED FOR PAINTBALL USE MUST BE WORN BY THE USER AND ANY PERSON WITHIN RANGE. READ THIS OWNER'S MANUAL COMPLETELY BEFORE LOADING, PRESSURIZING, OR OPERATING THE PMI PIRANHA™ PAINTBALL MARKER.

TABLE OF CONTENTS

PAINTBALL SAFETY RULES	2
OPERATING INSTRUCTIONS.....	4
COMPRESSED GAS/AIR.....	6
VELOCITY ADJUSTMENT	8
PMI PIRANHA™ SPECIFICATIONS .	10
PARTS & DIAGRAM.....	11
MAINTENANCE & LUBRICATION ...	14
TROUBLESHOOTING	20
WARRANTY	23

This owner's manual is provided with several models of the PMI Piranha™ paintball marker. Pursuit Marketing, Inc. (PMI, Inc.), reserves the right to modify or change its markers without incurring any obligation to incorporate such modifications or changes in any of its products that were sold prior to the modification. The information in this owner's manual may be updated or changed without notice.

This owner's manual is intended to remain with the paintball marker upon any subsequent transfer of the marker, whether through sale, resale, or furnishing in any manner. Updated and replacement owner's manual may be obtained from

Pursuit Marketing, Inc., 5035 River Road, Schiller Park, IL 60176 USA; phone 847.233.9900; www.pminetwork.com.

Questions about the operation of the PMI Piranha™ paintball marker may be directed to Pursuit Marketing, Inc.

SAFETY FIRST!



⚠ WARNING

THE PMI PIRANHA™ PAINTBALL MARKER IS NOT A TOY. MISUSE MAY CAUSE SERIOUS INJURY OR DEATH. EYE PROTECTION DESIGNED FOR PAINTBALL USE MUST BE WORN BY THE USER AND ANY PERSON WITHIN RANGE. READ THIS OWNER'S MANUAL COMPLETELY BEFORE LOADING, PRESSURIZING, OR OPERATING THE PMI PIRANHA™ PAINTBALL MARKER.



Always wear protective goggles and headgear specifically designed for paintball when shooting this marker.



Every person within range of an area where a paintball marker is in use must wear protective goggles and headgear specifically designed for paintball.



Operate a paintball marker only in areas where it is safe and lawful to do so.



Misuse of this paintball marker can result in criminal penalties including jail time.



This marker is intended for sale to adults only. Adult supervision is recommended at all times whenever a minor is handling this marker in any manner.



READ THIS OWNER'S MANUAL COMPLETELY BEFORE LOADING, PRESSURIZING, OR OPERATING THE PMI PIRANHA™ PAINTBALL MARKER.




Never aim or shoot a paintball marker toward any person who is not wearing protective goggles and headgear specifically designed for paintball.




During game play, follow referee's instructions and all field safety rules. Avoid shooting at a player's head, neck, or groin area.




Play paintball only where the rules of safe paintball play are followed.




All paintball markers must be chronographed regularly. Adjust marker to shoot paintballs at a velocity that is less than 300 feet per second (fps) and that does not exceed the velocity limit set by the paintball park where the marker is in use. Chronograph the marker at regular intervals during the day, as well as any time the power source is refilled or changed, any time the barrel or any part in the power system is changed, and upon request of any player or game official.




This paintball marker operates using compressed gas or air at specified pressure ranges. Follow safety procedures when handling compressed gas or air. All filling of compressed gas or air cylinders must be done by qualified persons.




Follow the rules of safe marker handling: Keep finger off trigger until ready to shoot. Keep muzzle pointed in a safe direction. In addition, firmly insert a barrel plug into the muzzle and push the mechanical safety “on” when the marker is not in use and when in any non-shooting area.




Never shoot at domestic animals or wildlife.




Never mark objects outside the confines of the game or authorized shooting areas.



Never look down the barrel of the marker.



Before disassembly, storage, or transport of the marker, remove all paintballs from the marker, barrel, and loader; remove power source; and remove all gas or air from the power system. Insert barrel plug and put mechanical safety in “no shoot” position.



Carry marker in case or sturdy bag when in public.



Safely and securely store marker to prevent access to it by unauthorized persons.

Safety standards information is available from the American Society for Testing and Materials, 100 Barr Harbor Drive, West Conshohocken, PA 19428-2959; phone 610.832.9500; www.astm.org. “Standard Practice for Paintball Field Operation” is publication F1777-97, and “Standard Specification for Eye Protective Devices for Paintball Sports” is publication F1776-97; inquire about additional publications which may be available at the time request is made.

⚠ WARNING

Every person within range of an area where a paintball marker is in use must wear protective goggles and headgear specifically designed for paintball.

1. Attach threaded barrel firmly to marker.
2. At this time, do not attach power source or loader and do not load paintballs into marker.
3. Insert barrel plug firmly into barrel.
4. Pull the cocking knob straight back from the rear of the marker until the cocking mechanism locks back in the cocked position. Figures 1 and 2.
5. Squeeze the trigger with an even pressure. The cocking knob will snap forward into the uncocked position.
6. Attach feed tube elbow and empty loader. If the feed tube elbow is difficult to attach, run hot water over the elbow or soak it in hot water for a minute, which will help the elbow expand for easier attachment. When the elbow cools, the snug fit will help the loader remain in position.
7. Cock the marker.



Figure 1 Pull Back



Figure 2 Fully Cocked

⚠ WARNING

The power system contains compressed gas or air when pressurized. Never disassemble marker until removing all gas or air from the power system. Rules for safe handling of compressed gas or air must be followed at all times.

8. Before attaching power source, read and understand the section in this manual on “Compressed Gas/Air”. Follow safety rules for handling compressed gas/air. If any leak occurs in the power system, refer to troubleshooting guide or to a qualified airsmith. Use only cylinders for compressed gas or air that comply with all applicable laws and regulations, including but not limited to those of the U.S. Department of Transportation, OSHA, Compressed Gas Association, and/or American Society for Testing and Materials.

Vertical air : The power source is attached by screwing the threads of the tank or power source adapter into the threaded ASA, forward of the trigger frame.

Bottom line: The power source is attached by screwing the threads of the tank or power source adapter into the threaded bottom line ASA at the base of the grip.

⚠ WARNING

WHEN COCKING THE PRESSURIZED MARKER, DO NOT RELEASE THE COCKING KNOB UNTIL AFTER THE COCKING MECHANISM HAS LOCKED BACK INTO THE COCKED POSITION; RELEASING THE COCKING KNOB DURING COCKING CAN CAUSE THE MARKER TO SHOOT.

9. Test for function after attaching power source: Squeeze the trigger. The marker should shoot air and the cocking knob should cycle forward and back, stopping in the cocked position, after each trigger squeeze . Repeat several times.

The PMI Piranha™ semi-automatic marker shoots one paintball for each squeeze of the trigger, and recocks itself after each shot.

10. Following safety rules, paintballs may be loaded.

⚠ WARNING

Before disassembly, storage, or transport of the marker, remove all paintballs from the marker, barrel, and loader; remove power source; and remove all gas or air from the power system. Insert barrel plug and put mechanical safety in “no shoot” position.

The safety is a small push-button on the left side of the marker above the trigger. When the safety is “on” the red o-ring around the safety is not visible and the marker should not shoot.

Questions about the operation of the PMI Piranha™ paintball marker may be directed to: Pursuit Marketing, Inc., 5035 River Road, Schiller Park, IL 60176 USA ; phone 847.233.9900; www.pminetwork.com

COMPRESSED GAS/AIR

The PMI Piranha™ paintball marker may be powered by CO₂, regulated compressed air, or regulated nitrogen. From the source of gas or air through the entire power system, there are varying pressures that are applied to the marker and the components of the power system.

THE SAFETY RULES FOR HANDLING COMPRESSED GAS OR AIR MUST BE FOLLOWED AT ALL TIMES.

OPERATING PRESSURE AND INPUT PRESSURE

Operating pressure range: 650 p.s.i. to 800 p.s.i.

Recommended maximum input pressure is 800 p.s.i.

Do not exceed recommended pressures.

When using a regulator in the marker's power system, follow the instructions provided by the manufacturer of the regulator.

Do not leave cylinder or pressurized marker in direct sunlight or exposed to heat source. Increased temperature will increase the pressure of compressed gas or air.

Do not attach anything to this marker that has a "check valve" or other device which does not allow complete draining of gas or air from the power system when the power source is detached.



Figure 3 Valve-cylinder connection.

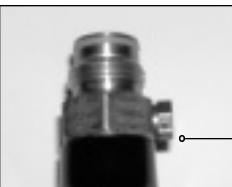


Figure 4 Valve-cylinder connection.

⚠ WARNING

DO NOT EXCEED RECOMMENDED INPUT OR OPERATING PRESSURE.

VALVE-CYLINDER CONNECTION

The valve on a cylinder is to remain screwed into the cylinder; Figures 3,4. Should it loosen, the cylinder may detach from the valve with extremely dangerous force.

Every time a cylinder is filled, the connection between the valve and cylinder must be inspected. If any looseness or leak is detected between the valve and the cylinder, do not fill. Drain cylinder and take to qualified personnel for inspection.

During filling, if any looseness or leak is detected between the valve and the cylinder, filling must stop immediately. Drain cylinder and immediately take to qualified personnel for inspection.

⚠ WARNING

A COMPRESSED GAS OR AIR CYLINDER IS A PRESSURE VESSEL. FOLLOW RULES FOR SAFE HANDLING OF COMPRESSED GAS OR AIR. ALL FILLING OF COMPRESSED GAS OR AIR CYLINDERS, AND ALL REPAIRS TO A MARKER'S POWER SYSTEM OR ITS COMPONENTS, MUST BE PERFORMED BY QUALIFIED PERSONNEL.

FILLING COMPRESSED GAS/AIR

An overfill of any compressed gas or air cylinder can cause the safety burst disk (Figure 5) on the cylinder to burst, or the cylinder itself to rupture. A cylinder may rupture with extremely dangerous force. Use properly rated disk only.

A scale must be used for all CO2 fills to prevent an overfill. A pressure gauge must be used for all compressed gas or air fills to prevent an overfill.

Fills must be performed by qualified personnel. A cylinder must not be filled beyond the cylinder's capacity per the U.S. Department of Transportation. A cylinder's rated capacity appears on the cylinder itself.

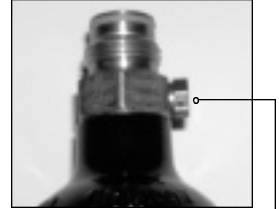


Figure 5 Safety burst disk.

⚠ WARNING

DO NOT OVERFILL ANY CYLINDER. AN OVERFILL CAN CAUSE THE SAFETY BURST DISK OR THE CYLINDER ITSELF TO RUPTURE.

HYDROSTATIC TESTING DATE

Many cylinders are required by the U.S. Department of Transportation to be hydro tested at periodic intervals, with the interval varying according to cylinder type. The date of the cylinder's initial or later testing appears on the cylinder.

A cylinder that is out of date for hydrostatic testing must not be filled or used.

A WARNING

All paintball markers must be chronographed regularly. Adjust marker to shoot paintballs at a velocity that is less than 300 feet per second (fps) and that does not exceed the velocity limit set by the paintball park where the marker is in use.

Chronograph the marker at regular intervals during the day, as well as any time the power source is refilled or changed, any time the barrel or any part in the power system is changed, and upon request of any player or game official.

1. Chronograph the marker using standard chronograph procedures and following safety rules. Shooting velocity will vary based upon many factors.
2. Adjust velocity by using a $\frac{3}{16}$ " allen wrench to turn the velocity adjuster. Figure 6. Turn adjuster clockwise to raise velocity. Turn adjuster counterclockwise to lower velocity. Figure 7. Turning the velocity adjuster changes the amount of tension on the hammer spring. The hammer spring may be changed for additional velocity adjustment; insert stiffer spring to raise velocity and less stiff spring to lower velocity (red spring is stiffer than blue spring).



Figure 6 $\frac{3}{16}$ " allen is used to adjust velocity.

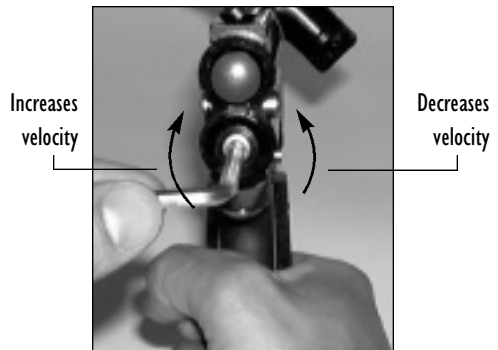


Figure 7 Clockwise increases velocity. Counterclockwise reduces velocity.

The hammer spring assembled with the PMI Piranha™ paintball marker is intended to provide appropriate shooting velocity for most **outdoor** paintball game situations and will provide a range of velocities suitable for most conditions. Shooting velocity will vary based upon form of regulated compressed gas or air used to power the marker, outside temperature, and other factors. Additional hammer springs of varying spring stiffness are available for further velocity adjustment.

DO NOT EXCEED 300 FEET PER SECOND (fps) VELOCITY.

The PMI Piranha™ paintball marker power system may be used with CO₂, regulated nitrogen, or regulated compressed air.

Operating pressure range: 650 p.s.i. to 800 p.s.i.

Recommended maximum input pressure is 800 p.s.i.

DO NOT EXCEED RECOMMENDED INPUT PRESSURE.

3. Chronograph the marker after every velocity adjustment.
4. Chronograph the marker at regular intervals during the day, as well as any time the power source is refilled or changed, any time the barrel or any part in the power system is changed, and upon request of any player or game official.

SAFETY FIRST!

USE A BARREL PLUG!

PMI PIRANHA™ SPECIFICATIONS

Action:	semi-automatic, open bolt blow-back
Length:	17 inches overall (with 9 in. barrel and without attachments) 18 inches overall (with 9 in. barrel and with attachments) 19 inches overall (PMI Piranha™ VTL) 20 inches overall (PMI Piranha™) 21 inches overall (PMI Piranha™ EXT/STS)
Height:	8 inches (without attached loader)
Barrel Length:	9 inches; 13 inches for EXT/STS
Paintballs:	for use only with standard “.68 caliber” (.68-inch diameter) paintballs
Power:	compressed air or regulated N ₂
Operating pressure:	recommended 650 p.s.i. to 800 p.s.i.
Input pressure:	not to exceed 800 p.s.i.
Power source input:	vertical or bottom line ASA; accepts standard threading
Temp:	molded .45 style
Safety:	mechanical push button

This owner's manual is provided with several models of the PMI Piranha™ paintball marker. Pursuit Marketing, Inc. (PMI, Inc.), reserves the right to modify or change its markers without incurring any obligation to incorporate such modifications or changes in any of its products that were sold prior to the modification. The information in this owner's manual may be updated or changed without notice.

This owner's manual is intended to remain with the paintball marker upon any subsequent transfer of the marker, whether through sale, resale, or furnishing in any manner. Updated and replacement owner's manual may be obtained from Pursuit Marketing, Inc., 5035 River Road, Schiller Park, IL 60176 USA; phone 847.233.9900; www.pminetwork.com

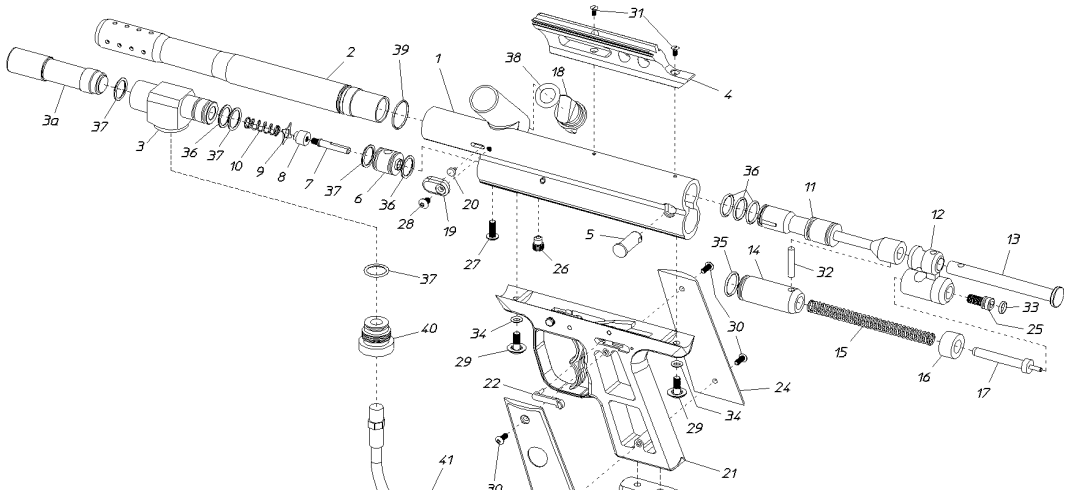


Figure 8

**SHOWN: PMI PIRANHA™ VTL
VERTICAL AIR CONFIGURATION**

**BOTTOM LINE
ADAPTER AND
ASA ATTACH
HERE ON BOTTOM
LINE MODELS.**

PMI PIRANHA™ PARTS DIAGRAM



- | | | | |
|---------------------------|---------|---------------------------|--------|
| 1. Receiver | RP1110 | 23. Grip Left | RP1703 |
| 2. Barrel | RP1114 | 24. Grip Right | RP1704 |
| 3. ASA Gas Port | RP1610 | 25. Velocity Screw | RP1704 |
| 4. Sight Rail | RP1113 | 26. Valve Set Screw | RP1513 |
| 5. Field Strip Pin | RP1112 | 27. ASA Screw | RP1680 |
| 6. Valve Body | RP1510 | 28. Ball Retainer Screw | RP1180 |
| 7. Valve Pin | RP1511 | 29. Trigger Frame Screw | RP1783 |
| 8. Valve Cup Seal | RP1512 | 30. Grip Screws | RP1783 |
| 9. Valve Guide | RP1520 | 31. Sight Screw | RP1182 |
| 10. Valve Spring | RP1550 | 32. Bolt Pin | RP1291 |
| 11. Bolt | RP1210 | 33. Velocity Screw O-Ring | RP1460 |
| 12. Block Assembly | RP1410A | 34. Trigger Frame Screw | RP1761 |
| 13. Cocking Rod | RP1211 | O-Ring | RP1361 |
| 14. Hammer | RP1310 | 35. Hammer O-Ring | RP1260 |
| 15. Hammer Spring | RP1350 | 36. Bolt O-Ring | RP1560 |
| 16. Hammer Cushion | RP1360 | 36. Valve O-Ring Rear | RP1660 |
| 17. Spring Guide Assembly | RP1301A | 36. ASA O-Ring Rear | RP1561 |
| 18. Ball Stop | RP1102 | 37. Valve O-Ring Front | RP1661 |
| 19. Ball Retention Cap | RP1101 | 37. ASA O-Ring Front | RP1162 |
| 20. Ball Retainer | RP1160 | 38. Ball Stop O-Ring | RP1161 |
| 21. Trigger Frame | RP1701 | 39. Barrel O-Ring | |
| 22. Sear Release Slide | RP1702 | | |

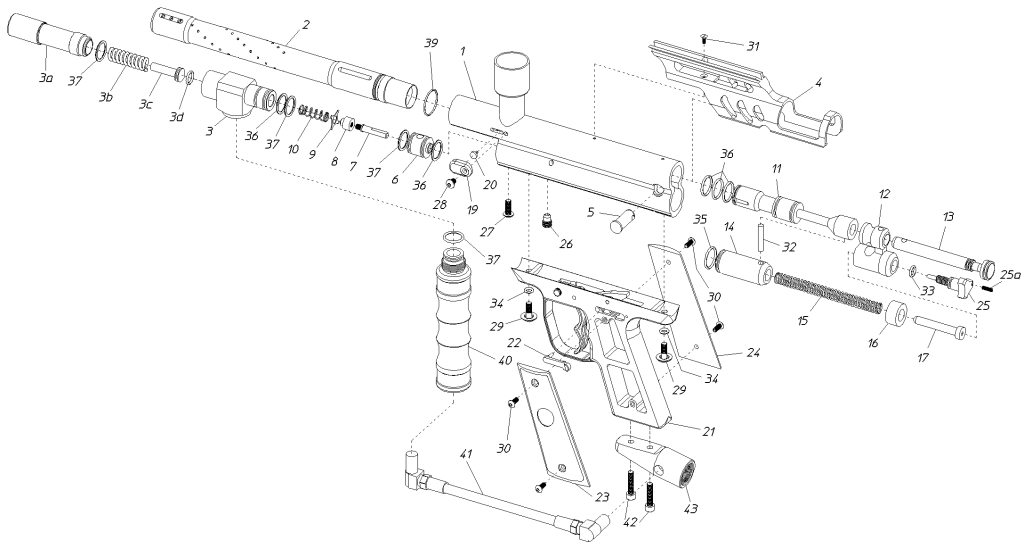


Figure 9

**SHOWN: PMI PIRANHA™ VTL
VERTICAL AIR CONFIGURATION**

The PMI Piranha™ is easy to strip for cleaning and basic maintenance. **Regular cleaning and maintenance is highly recommended, including frequent checks of all power system components.** Keep screws tightened. Replace worn components with factory parts; all leaks must be repaired promptly. Power system repairs are best performed by the factory or an authorized factory repair facility; contact PMI for information regarding authorized PMI Piranha™ repair facilities.

⚠ WARNING

DO NOT ATTEMPT TO PERFORM MAINTENANCE PROCEDURES UNLESS QUALIFIED TO DO SO. DO NOT DISASSEMBLE MARKER UNTIL IT IS COMPLETELY DRAINED OF COMPRESSED GAS OR AIR AND ALL PAINTBALLS HAVE BEEN REMOVED. ALL FILLING OF COMPRESSED GAS OR AIR CYLINDERS MUST BE DONE BY QUALIFIED PERSONS.

CONTACT PMI, INC., FOR REPAIR ASSISTANCE AND INFORMATION REGARDING AUTHORIZED PMI PIRANHA™ REPAIR FACILITIES.

PAINTBALL MARKER POWER SYSTEMS MUST BE REPAIRED OR REPLACED ONLY WITH THE CORRECT PRESSURE RATED COMPONENTS.

DISASSEMBLY PROCEDURE

1. Before disassembly of the marker, remove all paintballs from the marker, barrel, and loader; remove power source; and remove all gas or air from the power system.



Figure 10 Remove field strip pin to begin disassembly.

2. Leave barrel plug firmly inserted in barrel and keep barrel pointed in a safe direction.

3. To remove the bolt/hammer assembly, first remove the field strip pin. Figure 10 The field strip pin is at the upper rear of the receiver and is removed by pulling it out of the left side of the marker.

4. Grasp the block assembly and slowly begin to pull the bolt/hammer assembly out of the marker. Figure 11
5. When the bolt/hammer assembly is about halfway out, grasp it with one hand and continue to hold it intact while removing it completely from the marker. Figure 12

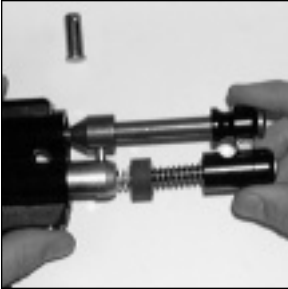


Figure 11



Figure 12 Grasp assembly.



Figure 13 Bolt-hammer assembly removed.

LUBRICATION

It is recommended that a 100% synthetic oil, such as KC Trouble Free gun oil, be used for lubricating the marker.

1. Before each insertion of the removable power source (tank or remote line) into the ASA, clean the threads and put two drops of oil onto them.
2. After removing the bolt/hammer assembly, put a drop of oil onto each o-ring. Put two drops of oil onto the cocking rod. Put a drop of oil onto the bolt.
3. Before screwing the barrel onto the marker after removal, clean the barrel threads and put a drop of oil onto the o-ring.
4. After removing the trigger frame, put a drop of oil onto the pivot points of the trigger and sear.
5. The valve and valve o-rings do not require oil.

REASSEMBLY PROCEDURE

1. See Figures 15 through 23, which show the sequence of procedure for reassembly of the bolt/hammer assembly.

Once it is reassembled, hold the bolt/hammer assembly in one hand. Figure 24. Push it into the marker until it stops sliding forward, which will be about halfway into the body of the marker. Figure 25.

2. Push the Sear Release Slide button forward. Figure 26. The Sear Release Slide button is located on the left side of the marker near the top of the left grip panel. Continue to press assembly into marker. Pushing the button allows the bolt/hammer assembly to slide easily the rest of the way into the marker.

3. Align the ball in the field strip pin with the groove in the middle of the receiver, and reinsert the field strip pin. **Field strip pin must be inserted into the left side of the marker!** Figure 14

4. After reassembly, follow the procedures in this manual for adding power system, loader, and paintballs.



Figure 14

SAFETY FIRST!
ALWAYS WEAR
GOGGLES AND HEAD
PROTECTION DESIGNED
FOR PAINTBALL!



Figure 15



Figure 16



Figure 17



Figure 18

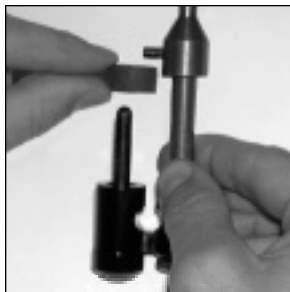


Figure 19



Figure 20



Figure 21



Figure 22



Figure 23



Figure 24



Figure 25



Figure 26

WARNING

DO NOT ATTEMPT TO PERFORM MAINTENANCE PROCEDURES UNLESS QUALIFIED TO DO SO.

CONTACT PMI, INC., FOR REPAIR ASSISTANCE AND INFORMATION REGARDING AUTHORIZED PMI PIRANHA™ REPAIR FACILITIES.

PAINTBALL MARKER POWER SYSTEMS MUST BE REPAIRED OR REPLACED ONLY WITH THE CORRECT PRESSURE RATED COMPONENTS.

1. Before disassembly of the marker, remove all paintballs from the marker, barrel, and loader; remove power source; and remove all gas or air from the power system.
2. To remove the bottom line air system (if needed), detach the bottom line ASA from the grip by removing the two screws. Figure 27. Then unscrew the threaded connector from the vertical ASA adapter. Figure 28

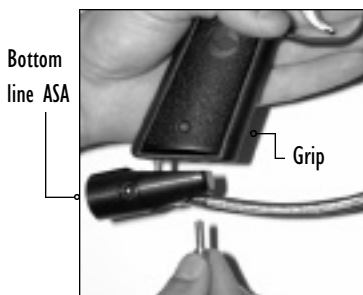


Figure 27

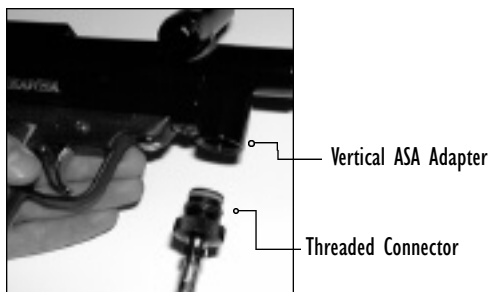


Figure 28

3. To remove trigger frame from the receiver, remove the two large allen screws under the receiver. One is in front of the trigger guard and one is behind the grip portion of the frame. Figure 29. The receiver then will disassemble from the trigger frame.

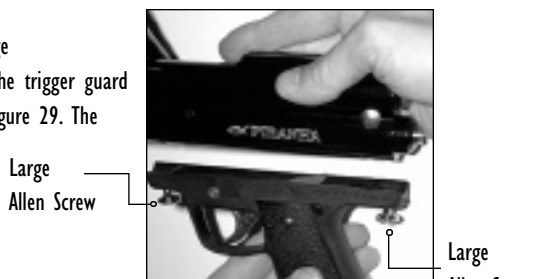


Figure 29

4. To remove the ASA adapter, remove the small allen screw under the receiver. Figure 30. The ASA adapter can then be removed. Figure 31. NOTE: The o-ring on the ASA adapter that, at insertion, contacts the receiver first is white. The other o-ring is black.



Figure 30



Figure 31

5. To access the valve assembly, remove the the valve spring, pin, and guide as in Figure 32. Remove the small brass screw located in the center of the underside of the receiver, Figure 33. To remove the valve body, use a flat ended wooden dowel to push the valve body out of the front the receiver, Figure 34.



Figure 32



Figure 33

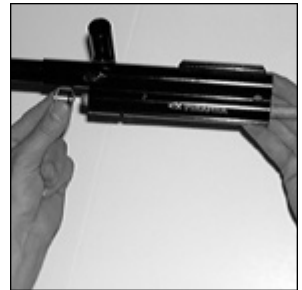


Figure 34

The valve body must be inserted correctly: note that the hole to the rear of the valve is tapered, and has a black o-ring. The front of the valve is not tapered and has a white urethane o-ring. The valve pin assembly must be inserted correctly; valve pin must drop down into valve body completely. Valve spring must be centered in valve bore.

6. Follow the procedures in this manual for adding power system, loader, and paintballs.

Questions about the operation of the PMI Piranha™ paintball marker may be directed to: Pursuit Marketing, Inc., 5035 River Road, Schiller Park, IL 60176 USA ; phone 847.233.9900 ext. 7150 www.pminet-work.com

TROUBLESHOOTING

A WARNING

DO NOT ATTEMPT TO PERFORM MAINTENANCE PROCEDURES UNLESS QUALIFIED TO DO SO.

THIS TROUBLESHOOTING GUIDE DOES NOT COVER ALL SITUATIONS AN INDIVIDUAL MAY ENCOUNTER. CONTACT PMI, INC., FOR REPAIR ASSISTANCE AND INFORMATION REGARDING AUTHORIZED PMI PIRANHA™ REPAIR FACILITIES.

PAINTBALL MARKER POWER SYSTEMS MUST BE REPAIRED OR REPLACED WITH THE CORRECT PRESSURE RATED COMPONENTS.

AIR LEAK

Leak in pressure source between valve and cylinder

Do not fill cylinder. Immediately take to qualified personnel for inspection. Cylinder must be drained.

Leaks at connection between ASA and tank

Check o-ring at connection or on remote hose connector

Leak at connection between

Disassemble air hose assembly for repairs; contact factory authorized repair center

Leaks at body of marker or down the barrel

Requires removal of valve and check of valve o-rings

Leaks at connection between gas-through foregrip & vertical ASA

Remove foregrip unit and check o-ring

A WARNING

BEFORE DISASSEMBLY OF THE MARKER, REMOVE ALL PAINTBALLS FROM THE MARKER, BARREL, AND LOADER; REMOVE POWER SOURCE; AND REMOVE ALL GAS OR AIR FROM THE POWER SYSTEM.

TRIGGER AND SHOOTING

Trigger will not pull back

Check that mechanical safety is not engaged; safety should be fully pushed toward left side of marker and red o-ring on safety should be fully visible

Trigger pulls back, marker will not shoot

Check that marker is cocked, air source is correctly attached, and air source is adequately filled

Trigger action does not feel smooth

Check pin at top of trigger near trigger frame; if it catches on the edge of the frame, use center punch to tap pin back into place

Marker runs on (partially cycles more than

once when trigger is squeezed) adequately filled. Check sear for wear. Check hammer o-ring for wear and replace hammer o-ring if needed, using factory o-ring only. Use of other than factory o-ring can cause run on.

VELOCITY

Low

Check that air source is adequately filled

Check bolt/hammer assembly and clean it; clean inside of bolt/hammer assembly is located

Low

Change to a stiffer hammer spring

Adjusting velocity adjuster

High

Change to a less stiff hammer spring

CHRONOGRAPH THE MARKER AT REGULAR INTERVALS DURING THE DAY, AS WELL AS ANY TIME THE POWER SOURCE IS REFILLED OR CHANGED, ANY TIME THE BARREL OR ANY PART IN THE POWER SYSTEM IS CHANGED, AND UPON REQUEST OF ANY PLAYER OR GAME OFFICIAL.

DO NOT EXCEED 300 FPS VELOCITY.

TROUBLESHOOTING

PAINTBALLS

Not flying straight

Check for broken paint in barrel, loader, feed tube, chamber, and bolt/hammer assembly area. Disassemble and clean.

Break in barrel

if necessary

Do not drop into feed tube

Shake loader; check loader and feed tube for broken paint

Paintball not at a time

Check ball retainer (RP 1160) and replace if necessary

SHOOT ONLY QUALITY PAINTBALLS. PMI PREMIUM, PMI GOLD TWO-TONE™, AND MARBALLIZER™ PAINTBALLS ARE RECOMMENDED FOR USE IN THE PMI PIRANHA™

BARREL

Barrel not tightening; firmly tighten barrel

Aftermarket barrel does not tighten

Check to see that the threads on the barrel match or is difficult to tighten the threads on the receiver; if threading is mismatched, barrel is not designed for use with PMI Piranha™

WARNING

DO NOT ATTEMPT TO PERFORM MAINTENANCE PROCEDURES UNLESS QUALIFIED TO DO SO.

CONTACT PMI, INC., FOR REPAIR ASSISTANCE AND INFORMATION REGARDING AUTHORIZED PMI PIRANHA™ REPAIR FACILITIES.

BEFORE DISASSEMBLY OF THE MARKER, REMOVE ALL PAINTBALLS FROM THE MARKER, BARREL, AND LOADER; REMOVE POWER SOURCE; AND REMOVE ALL GAS OR AIR FROM THE POWER SYSTEM.

PAINTBALL MARKER POWER SYSTEMS MUST BE REPAIRED OR REPLACED WITH THE CORRECT PRESSURE RATED COMPONENTS.

Pursuit Marketing, Inc. (PMI, Inc.), extends a warranty to the original purchaser of the PMI Piranha™ paintball marker that the product is free from defects in materials and workmanship for a period of one year from the date of purchase.

PMI, Inc.'s obligation under this warranty shall be limited to repairing or replacing any part of the product which is defective.

Service for this replacement or repair will be done free of charge upon delivery of the product to Pursuit Marketing, Inc. (PMI, Inc.), 5035 River Road, Schiller Park, IL 60176; accompanied by proof of the date of purchase in the form of a sales receipt or packing slip, customer pays shipping charges. Please call PMI, Inc., at 847.233.9900 for information on obtaining warranty service and/or to obtain a Return Authorization (RA) number before shipping product to PMI, Inc.

WARRANTY EXCLUSIONS AND LIMITATIONS

This warranty does not apply in the event of misuse or abuse of the product, use of any parts other than original factory parts, or unauthorized repairs, modifications, or alterations, and does not apply to any parts that are made defective by modification, misuse, abuse, or accident. This warranty does not apply to o-rings, cup seals, or springs, or to normal fading of anodized finish, scratches, or other cosmetic wear, or to any items or parts not manufactured by PMI, Inc.

Other than as expressly stated herein, PMI, Inc., does not make any warranties, express or implied, including but not limited to implied warranties of merchantability or fitness, for any purpose other than that for which the PMI Piranha™ was designed. This warranty gives you specific legal rights. You may have other rights which may vary from state to state.

PMI, Inc., is not liable for any consequential damages or incidental damages which may arise from the use or operation of the PMI Piranha™ or from any breach of the warranty herein set forth.

WARRANTY REGISTRATION FORM

Please fill out entirely the enclosed PMI Piranha™ Warranty Registration form and mail it to: Pursuit Marketing, Inc., 5035 River Road, Schiller Park, IL 60176 USA.

REPAIR PROCEDURE

ORIGINAL SALES PURCHASE RECEIPT OR PACKING SLIP

Save your original sales purchase receipt or packing slip. A copy must accompany the marker when warranty repairs are sought.

PMI, Inc., takes pride in manufacturing high quality paintball products for many years of trouble free enjoyment. Should you experience any difficulty in operating or maintaining this PMI Piranha™ paintball marker, please re-read the owner's manual carefully. If further assistance is needed, contact PMI, Inc., at 847.233.9900 ext. 7150

WARRANTY REPAIR RETURN PROCEDURE

A returned product must be accompanied by a Return Authorization (RA) number; please call PMI, Inc., at 847.233.9900 to obtain a RA number before shipping product to PMI, Inc. All warranty returns must be accompanied by a copy of the sales receipt or packing slip, the owner's name, address, and telephone number. Include owner's fax and e-mail if possible. Owner must remove all paintballs and completely drain power system before shipping, and must pack product securely to avoid damage during shipping. Include a brief description of what does not appear to work correctly. Ship to: PMI, Inc., 5035 River Road, Schiller Park, IL 60176.

OUT OF WARRANTY REPAIRS

Should repairs be needed on a PMI Piranha™ that is out of warranty, contact PMI for information regarding authorized

PMI Piranha™ repair facilities.

Any PMI Piranha™ marker returned to PMI for out of warranty repairs must be accompanied by a RA number, description of what does not appear to work correctly, and owner's information requested in "Warranty Repair Return Procedure" above. Including sales purchase receipt or packing slip is optional for out of warranty repairs. Please note that there will be a minimum labor charge and may be additional charges for parts to repair an item/product that is not covered by warranty. An estimate of repair cost will be provided to the customer and authorization to complete the repairs will be obtained prior to repairs being done.

