

**TM 219-749-6022**

---

**OPERATOR'S MANUAL  
MODEL 68-SPECIAL**

---

**CO<sub>2</sub> POWERED  
PAINT BALL GUN  
CALIBER .68**

**TIPPMANN**

**PNEUMATICS, INC.**

3518 ADAMS CENTER ROAD  
FORT WAYNE, IN 46805

# OPERATOR'S MANUAL

## CO<sub>2</sub> POWERED PAINT BALL GUN Caliber .68, Model 68-SPECIAL

# TIPPMANN

**PNEUMATICS, INC.**

Fort Wayne, Indiana

Warranty & Repair

1-800-533-4831

## INDEX

<b>Table of Contents</b>	<b>Page</b>
General .....	1
Specifications .....	1
Operating Instructions	
1. CO <sub>2</sub> Cylinder Connection & Removal .....	2
2. Safety .....	2
3. Loading/Unloading .....	2
4. Firing .....	3
5. Removing CO <sub>2</sub> Cylinder .....	3
Maintenance	
1-M. Cleaning Barrel .....	3
2-M. Before Storing .....	3
3-M. After Storage and Before Use .....	3
4-M. Velocity Adjustment .....	3
Assemblies ("Exploded" view of gun) .....	4
CO <sub>2</sub> Cylinder Re-filling Instructions .....	6
Warranty & Repair Policy .....	7
Statement of Liability .....	8

## GENERAL

The 68-Special, semi-automatic rifle (cal. 68) is a modern, small arm produced in accordance with the most advanced manufacturing methods.

The 68-Special is a gas-operated rifle which fires from an open bolt, blow-back system. The paint balls are gravity feed from an ammo box magazine which holds approximately 50 paint balls.

## SPECIFICATIONS

Caliber:	.68
Power:	CO <sub>2</sub> (7 oz. siphon cylinder)
Mag. Capacity:	50+
CO <sub>2</sub> Capacity:	225 shots per cylinder
Cycle Rate:	300 RPM
Standard Barrel Length:	11"
SNIPER MODEL Barrel Length:	16"
Length-Overall:	32"
Weight:	4.8 lb.
Effective Range:	150 - ft.
Action:	Semi-auto (open bolt blow-back)



# OPERATING INSTRUCTIONS

## 1. CO<sub>2</sub> CYLINDER CONNECTION & REMOVAL

With gun unloaded and pointed in a safe direction, pull the bolt handle back to the cocked position. Hold gun body magazine housing in left hand. With right hand twist cylinder clockwise into rear end of receiver until tight. Gun should be fully charged and ready to fire. To test, point upward in a safe direction and pull trigger. Gun will cycle and fire gas only.

**NOTE:** The CO<sub>2</sub> cylinder comes complete with valve and butt plate. The valve stem visible in the end of the valve body is automatically depressed when threaded into the receiver body. This charges the gun with its CO<sub>2</sub> propellant.

The cylinder valve is opened in the last full clockwise twist of the cylinder (stock) into the receiver. To uncharge the gun, unload paint balls from gun. Twist the CO<sub>2</sub> cylinder (stock) 3/4 turn counterclockwise. This closes the cylinder valve. Then fire the remaining CO<sub>2</sub> gas in the gun in a safe direction (approximately 3 shots).

## 2. Safety

Bolt handle acts as the Safety. Forward is "Safe" position. Pulled back, gun is cocked and ready to fire. To put gun in "Safe" position, let bolt handle forward by hand.

## 3. LOADING

With bolt handle in the forward or "Safe" position load ammo box and visually check to see if paint balls feed to chamber.

**UNLOADING:** To unload, remove ammo box or open ammo box then turn gun upside down to shake all balls from ammo box and chamber area. Then fire gun in a safe direction to clear any balls that may be in barrel or chamber area.

#### 4. FIRING

Pull bolt handle back to firing position, sight in the target, pull trigger; NOTE: guns with siphon tanks will shoot lower velocity for first three or four shots.

#### 5. REMOVING CO<sub>2</sub> CYLINDER FOR STORAGE

Twist cylinder counterclockwise 3/4 turn. Then, point the gun in a safe direction and pull trigger. (CAUTION: Gun will fire approximately 3 more times until CO<sub>2</sub> charge in receiver is gone.) Now, twist cylinder free from receiver for storing or when not in use.

### MAINTENANCE

#### 1-M. CLEANING BARREL

If a paint ball should break in barrel. Find cleaning cable in front grip. First, insert small end into receiver end of barrel, and feed through barrel until small end is through barrel. Then, pull small end until rubber grommet comes through with paint. (Barrel is clean.)

#### 2-M. BEFORE STORING

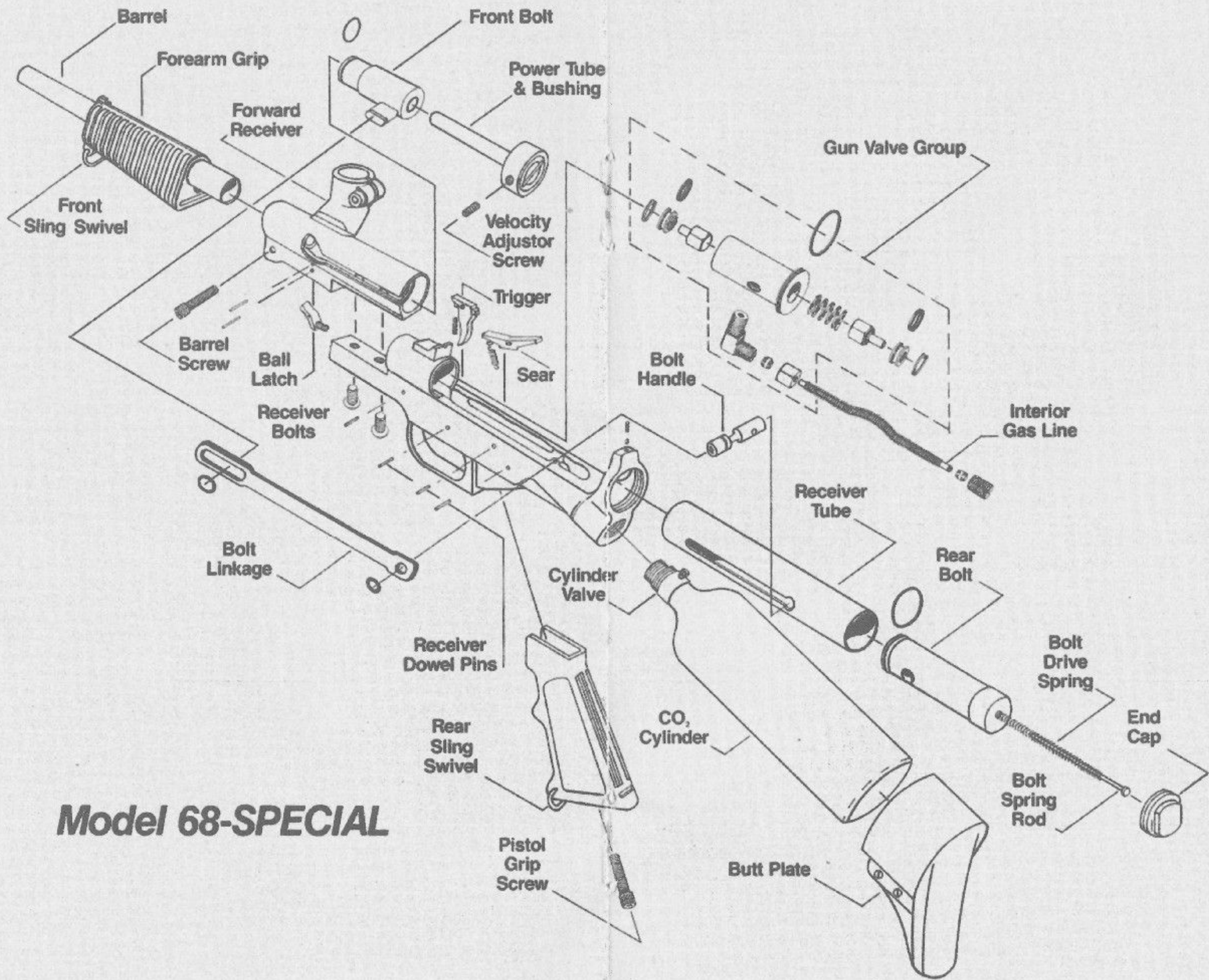
Before storing gun, remove the CO<sub>2</sub> cylinder. Clean barrel and spray a little oil into receiver to prevent rust.

#### 3-M. AFTER STORAGE AND BEFORE USE

Before installing CO<sub>2</sub>, put a few drops of oil into receiver tube and on the front bolt O-ring to lubricate. A little grease on cylinder valve O-ring will extend the durability of the O-ring.

#### 4-M. VELOCITY ADJUSTMENT

To adjust velocity use the 3/32" allen wrench enclosed with the gun. Locate the velocity adjustor screw on the power tube & bushing assembly. With the gun in the cocked position insert the allen wrench into the velocity adjustor screw and turn clockwise to decrease velocity/counterclockwise to increase velocity. NOTE: Never completely remove velocity screw.



**Model 68-SPECIAL**



# INSTRUCTIONS FOR FILLING TIPPMANN PNEUMATICS 7 oz. CO<sub>2</sub> Cylinders (with enclosed adapter)

1. Cylinders must be completely empty: To empty, depress valve pin on top of cylinder firmly against small, round object until completely empty.
2. Bulk cylinder for filling small CO<sub>2</sub> cylinder must have siphon tube. Bulk cylinders with siphon tubes are marked by dealer.
3. To fill cylinder, first weigh the TPI 7 oz. cylinder when it is completely empty; then install the TIPPMANN PNEUMATICS filling adapter on the bulk cylinder (hand tight). Then crack hand valve open until the gas in siphon tube escapes and liquid CO<sub>2</sub> appears in the form of a white smoke. Next, install empty TPI 7 oz. cylinder into adapter (hand tight) against rubber washer inside adapter; then open cylinder hand valve. After approximately 30 seconds, turn hand valve off, remove TPI 7 oz. cylinder and weigh again for net weight.

NOTE: If 7 oz. cylinder was frosty cold when filled, it will have approximately 7 oz. of CO<sub>2</sub> gas in it.

If 7 oz. cylinder was warm, it will have approximately 3 oz. of CO<sub>2</sub> gas in it. To fill to 7 oz., depress valve pin on top of cylinder against small, round object until completely empty. This will frost or chill cylinder for final fill. While cylinder is chilled, repeat filling operations. Second filling should contain approximately 7 oz. of CO<sub>2</sub> gas, but must be weighed.

4. To weigh cylinders, first weigh the cylinder when it is completely empty. Then weigh again when it is filled. Subtract the empty weight from the filled weight to tell the net weight of CO<sub>2</sub> gas in cylinder. Do not exceed 7 oz. net weight.

NOTE: If 7 oz. cylinder leaks after removing from bulk cylinder, tap valve pin with small, ball-peen hammer to clear dry ice from valve seat.

# **WARRANTY & REPAIR POLICY**

Tippmann Pneumatics, Inc. is dedicated to providing you with the ultimate paint ball gun and the quality support necessary for the utmost satisfaction in its use. In the event warranty or other non-warranty related repairs are required, we are here for you. We strive to complete within 24 hours of receipt, the necessary repair work for your gun and return it to you via UPS. For assistance with warranty & repair, call 1-800-533-4831.

## **WARRANTY STATEMENT**

Tippmann Pneumatics, Inc. warrants that this product is found free from defects in materials and workmanship during the first 6 months from original date of purchase by the initial — owner/purchaser. On claims submitted as outlined in "Warranty Or Repair Procedure" Tippmann Pneumatics, Inc. will repair or replace "without charge" any of its guns that have failed through defect in material or workmanship.

## **WARRANTY OR REPAIR PROCEDURE**

For Warranty And Non-Warranty Repair, ship or deliver your gun to Tippmann Pneumatics, Inc. postage or delivery charges prepaid, a brief statement regarding the requested repair, your name, address and telephone number where you can be reached during normal business hours, if possible.



## **STATEMENT OF LIABILITY**

### **WARNING:**

This rifle is classified as a dangerous weapon and is surrendered by Tippmann Pneumatics, Inc. with the understanding that the purchaser assumes all liability resulting from unsafe handling or any action that constitutes a violation of any applicable laws or regulations. Tippmann Pneumatics, Inc. shall not be liable for personal injury or loss of property or life resulting from the use of this rifle under any circumstances, including intentional, reckless, negligent or accidental discharges.

---

**PLEASE BE CAREFUL!**

---

