



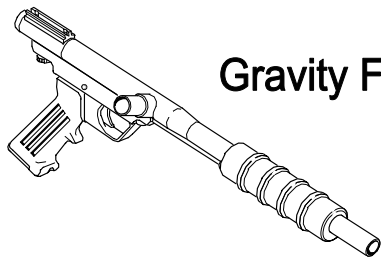
# User's Manual

---

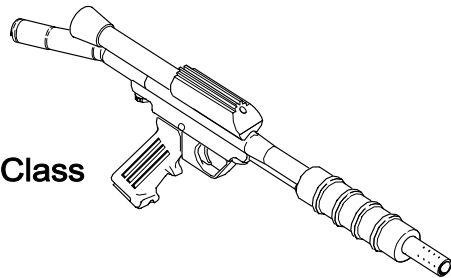
## Paintball Gun

## User's Manual

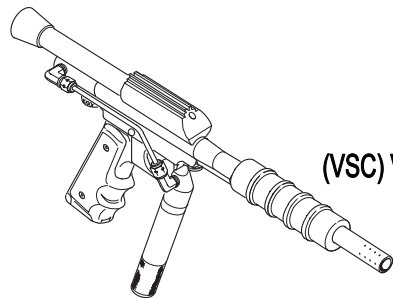
Component Concepts, Inc.  
The Phantom™ Paintball  
Gun User's Manual



**Gravity Feed**



**(SC) Stock Class**



**(VSC) Vertical Stock Class**

The information in this manual is subject to change without notice and does not represent a commitment on the part of Component Concepts, Inc. CCI reserves the right to make improvements to products without incurring any obligation to incorporate such improvements in products previously sold.

This manual contains information protected by copyright. No part of this manual may be photocopied or reproduced in any form without prior written consent from Component Concepts, Inc.

Copyright© 1989-2002 by Component Concepts, Inc.  
All rights are reserved.

The PHANTOM™ is a registered trademark of  
Component Concepts, Inc.

**Precautions**

Safety-Your Responsibility..... 1

**Description and Operation**

Introduction ..... 2  
Specifications..... 3  
The Gun Safety..... 3  
CO<sub>2</sub> Installation ..... 4  
Puncture Adapter Removal..... 4  
Load and Fire Paintballs ..... 5  
Velocity Adjustment ..... 6

**Service and Maintenance**

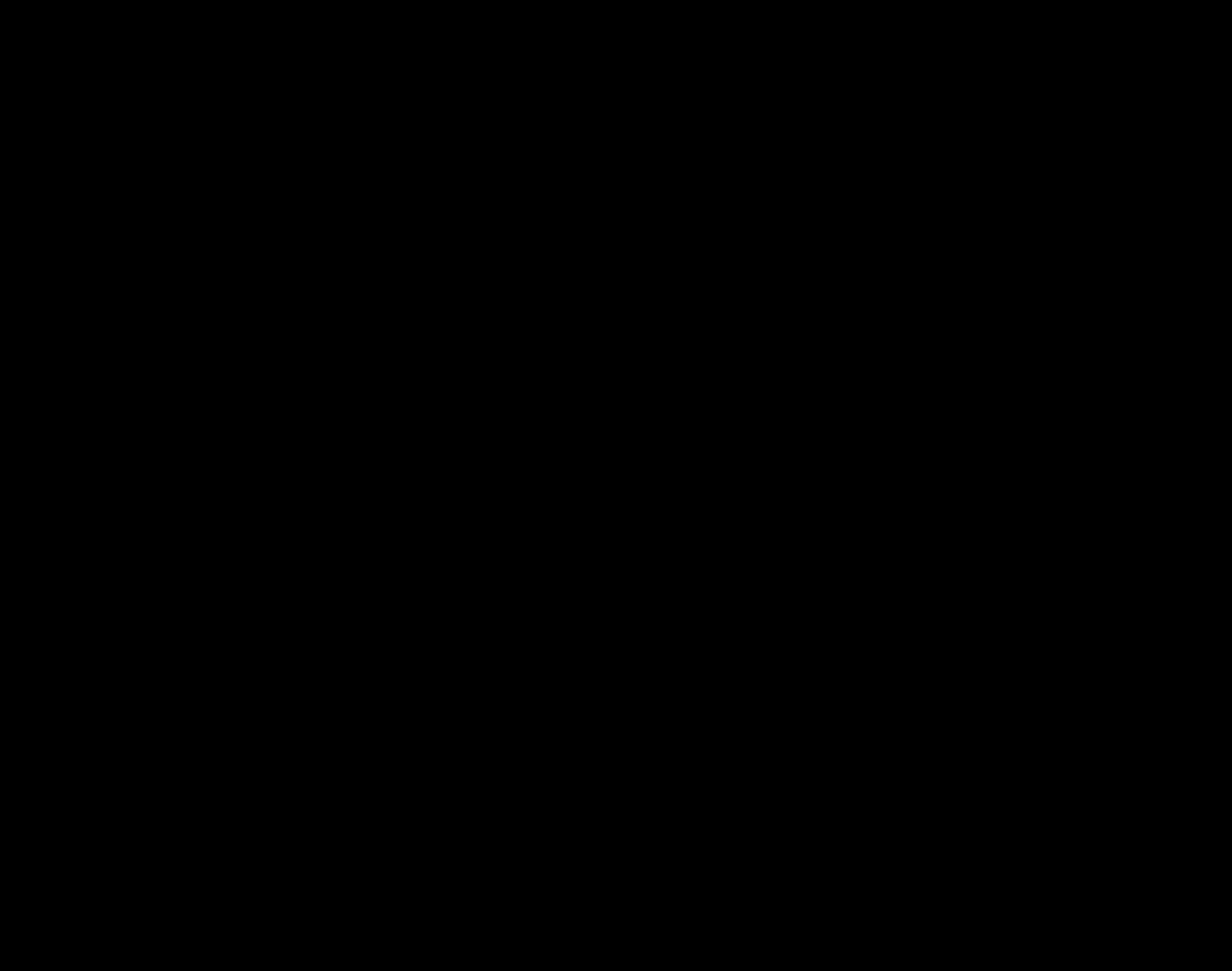
Field Stripping ..... 7  
Cup Seal and O-ring Replacement..... 8  
General Maintenance..... 8  
Service Notes..... 10  
Parts List ..... 12  
Exploded View ..... 13  
Accessories..... 14

**Warranty and Disclaimers**

Warranty ..... 15  
Disclaimers ..... 16







ethr(ah)5do

---

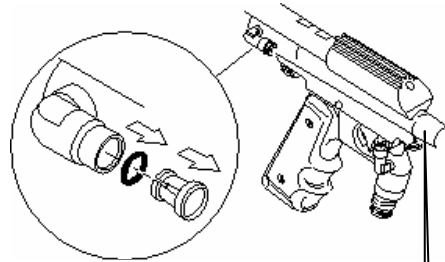
**Cup Seal and O-ring Replacement**

An extra O-ring and cup seal has been supplied to help you

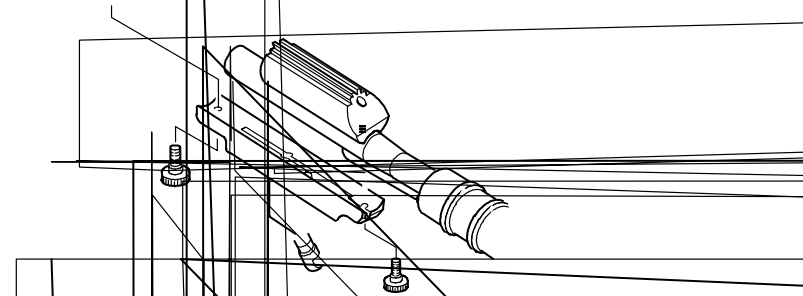
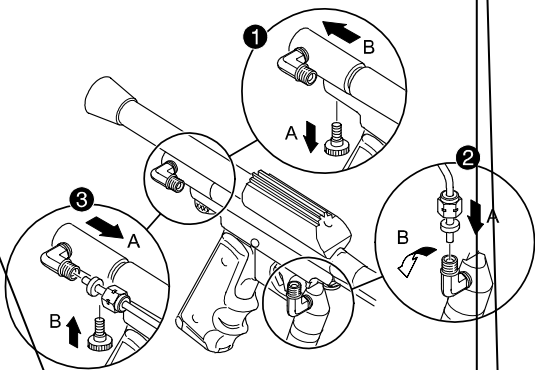
**Service Notes**

**Service Notes**

If your fitting should leak the internal O-ring in the fitting needs to be replaced. De gas the marker. Remove the tube by pushing in the collet and pulling the tube out. If you have a metal type tube you also need to remove the rear thumb screw. Pull and wiggle the collet back and forth to extract from fitting body. Replace the O-ring. (#9428)



Compression metal line assembly is the newest type vertical air connection and requires a 7/16 wrench for disassembly. The rubber sleeve is designed for positive seal with proper compression.



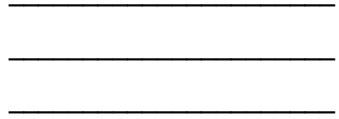
Item #	Part#	Description					
15	9115	Retainer					
16	9103	Power Tube, Modified Short					
17	9116	Power Tube Assembly, Modified					
18	9062	Anti-Kink Hammer Assembly					
19	9051	Main Spring					
20	9052	Tuned Port Compensator					
21	9045	Bolt (21A, 14)					
21A	9049	Nylon SeTc 0.001 Usmbwed 1d Po0-32bxn Se1/8M	20	9045	Bolt (21A,15(bl)-19(y)12(, )-15, 1uPm)0 -1.15 Tc 0.00.155 TD498	20	9062



**Accessories**

**Disclaimers**

This limited warranty does not extend to any products not purchased from Component Concepts, Inc. (CCI) or an



PLACE  
NECESSARY  
POSTAGE  
HERE

**Component Concepts, Inc.**  
530 South Springbrook Road  
Newberg, OR 97132

