

This loader may be protected by one or more of the following patents: 5,736,720; 5,282,454; 5,816,232; 6,015,058; 6,725,852; 7,021,302; 5,722,383; 6,739,323; 6,591,824; Other patents pending

**This Manual Contains:**

- Warranty Information
- Operating Instructions
- Maintenance Instructions
- Annotated Diagram

**SPECIFICATIONS**

Power: 9 volts (requires one 9 volt battery (not included))  
 Capacity: Approx. 200 paintballs (.68 cal)  
 On / Off Action: One touch operation  
 Feed Rate: Continuous Force Feed On marker feed, up to 18bps.

**WARNING:** NEVER SHOOT AT ANYONE WITHOUT PROPER PROTECTIVE EQUIPMENT FOR EYES, EARS, THROAT AND HEAD, WHICH MUST BE WORN AT ALL TIMES. EYE PROTECTION MUST BE DESIGNED SPECIFICALLY FOR PAINTBALL USE. FAILURE TO FOLLOW THESE SAFETY PRECAUTIONS MAY RESULT IN BODILY INJURY INCLUDING BLINDNESS AND DEAFNESS.



The VL Force loader is a continuous force feed loader that delivers consistent feed rates up to 18 balls per second. The patented and patent pending technology that drives this loader brings force feed performance to the price point that used to be agitating technology. This loader was designed to keep up with the fire rates of electronic multi mode markers.



Call 800-755-5061 or visit our web site at [www.viewloader.com](http://www.viewloader.com)/service if you should need an Illustrated Parts List.

JT Sports LLC.  
 5818 El Camino Real Carlsbad, CA 92008, U.S.A.  
 800-755-5061 Fax 760-579-5901  
[www.viewloader.com](http://www.viewloader.com)

**RULES OF SAFE PAINTBALL MARKER HANDLING**

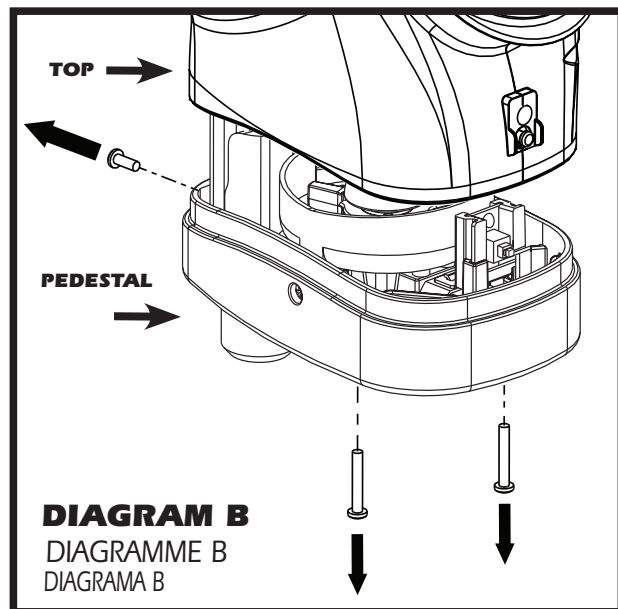
- Always wear proper eye, face and ear protection designed especially to stop paintballs.
- Never shoot a person who is not wearing proper protection.
- Treat every paintball marker as if it were loaded.
- Never look down the barrel of the marker.
- Never point the paintball marker at anything you don't wish to shoot.
- Keep the paintball marker on safe until ready to shoot.
- Keep the barrel plug in the paintball marker's muzzle when not shooting.
- Always remove gas source before disassembly.
- Store the paintball marker unloaded and degassed in a locked place.
- Follow warnings listed on gas source for handling and storage.
- Never use anything other than .68 caliber paintballs.
- Do not shoot fragile objects such as windows.
- Paintballs may cause staining of some porous surfaces such as brick, stucco and wood.
- Always measure velocity (speed of the paintball before it exits the barrel) before playing paintball.
- Never shoot at velocities in excess of 300 feet per second.
- Never engage in vandalism.
- Do not use marker for drive-by shootings.
- Do not modify your marker's pressurized air system or cylinder in any way.

**OPERATION INSTRUCTIONS**

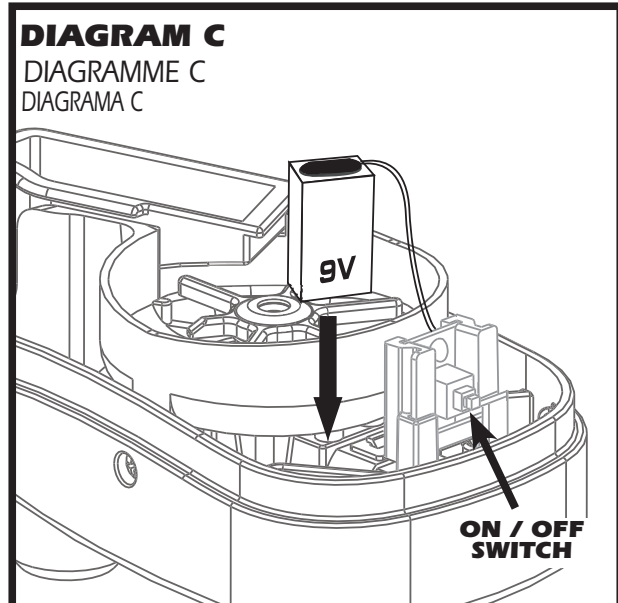
(See Diagram B)

Step 1. Battery Installation

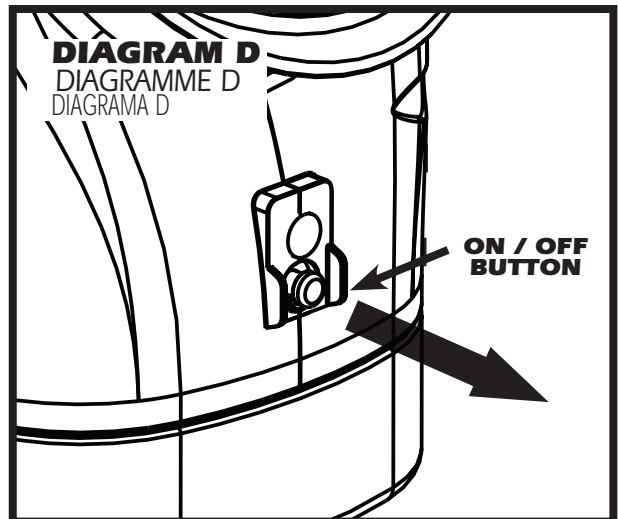
A. Using a standard Phillips screw driver, remove the 2 screws on the bottom of the loader and the 1 screw at the front of the loader.



B. Connect the 9 volt battery to the battery clip and then drop the battery (clip up) into the cavities on the left of the on/off button. Carefully tuck the extra wires around the on / off switch so that it won't get pinched when you put the loader back together again. Carefully put the top back onto the pedestal and screw the 3 Phillips screws back in. (see diagram B & C)



Note: make sure the on/off button is pushed and kept outward during installation. (see diagram D)



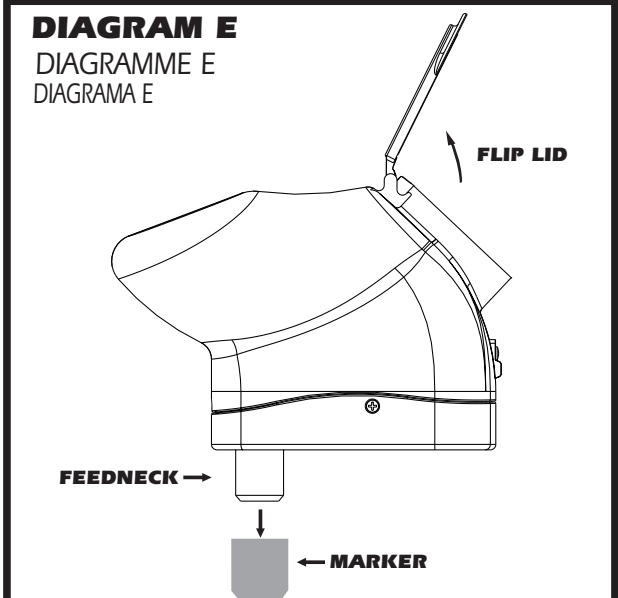
**PRO TIP:** If you ever need to clean your loader follow the same steps as the battery installation instructions.

Step 2. Install Loader Press the neck portion of the loader into the feedport or elbow of the paintball marker as shown in direction of arrow and orient so the lid is to the rear of the marker. The neck is designed to fit most common paintball markers. The fit should be firm and tight. (see diagram E)

**CAUTION:** Do not overfill the loader! This will cause impeller jams or performance loss and could cause damage to the loader.

Step 3. Turning your loader on and off: The on/off button is located at the back of the loader. It is protected by "Guard Rails" that prevent accidental activation. Push this button once to turn your Force loader on. You will hear the motor and 6 blade paddle turning. The paddle will continue to turn until you push the button again and turn the loader off. (see diagram F)

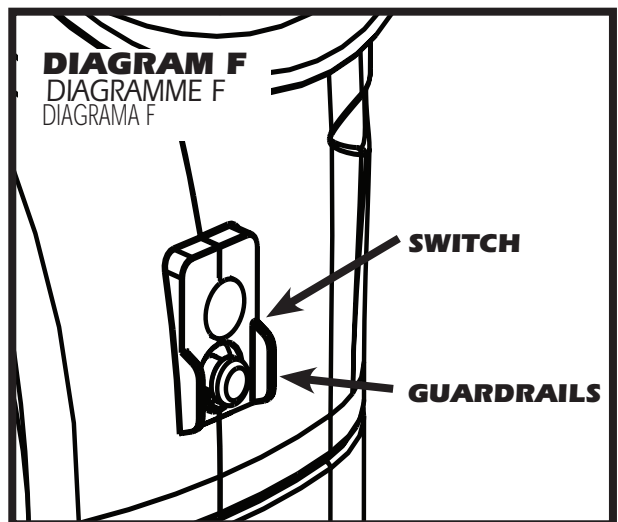
Note: LED Light is non functional in this model.



**PRO TIP:** If you are playing in the woods in a more hide and seek fashion you may want to keep the loader off until you engage your opponent. If you are playing speed ball in a closed in area you may want to keep the loader on for the full length of the game.

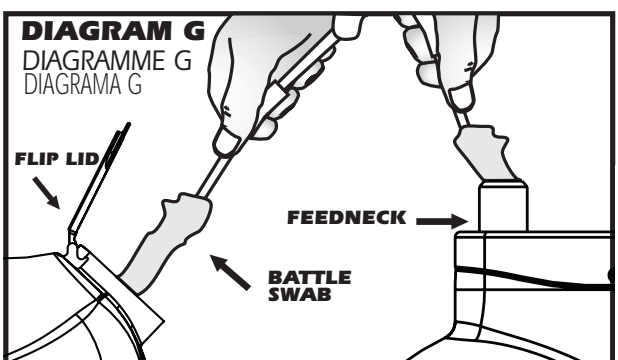
**STORAGE:** To extend product and battery life, always turn the power switch off, remove the batteries, and store away from extremes in temperature and humidity.

**CAUTION:** USE OF ELECTRONIC CIRCUIT BOARD OR SERVO MOTOR OTHER THAN THE ORIGINAL SUPPLIED COMPONENTS MAY VOID YOUR WARRANTY. CHECK WITH VIEWLOADER BEFORE INSTALLING REPLACEMENT COMPONENTS.



**CLEANING**

(Diagram G) Light cleaning may be done by using a flexible/fuzzy tip squeegee or similar object such as a paper towel to clean broken paintballs from inside the loader of feed tube. If more thorough cleaning is necessary follow maintenance guide for disassembly and cleaning.



**MAINTENANCE GUIDE**

DISASSEMBLY (See Diagram A)

Step 1. Place a towel on a flat surface and assemble, Phillips screwdriver, flat blade screwdriver, Small cup for screws and parts.

Step 2. Using a standard Phillips screw driver, remove the 2 screws on the bottom of the loader and the 1 screw at the front of the loader.

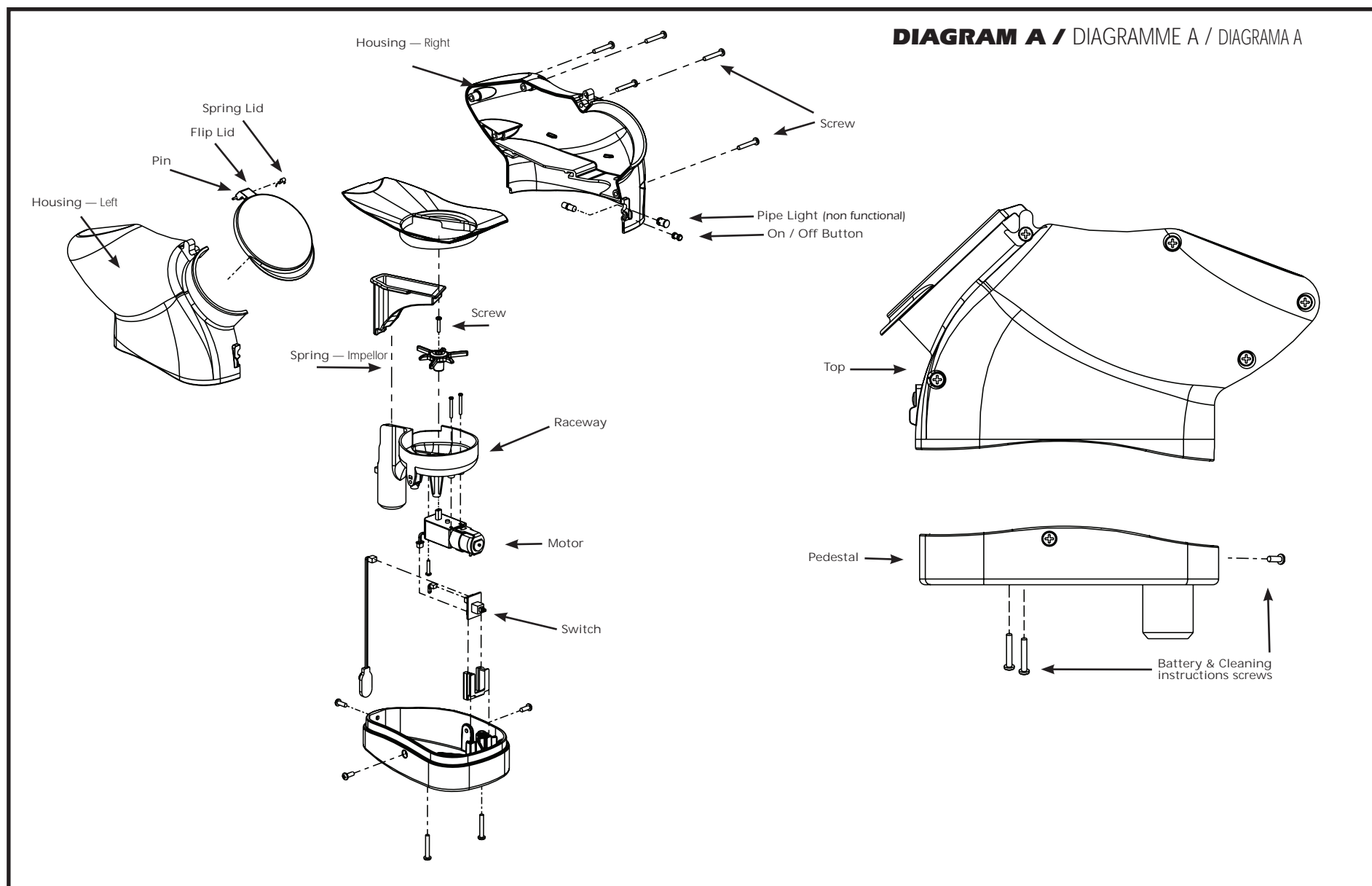
Step 3. The top and bottom pedestal sections of your loader can be cleaned with a soft cloth or diaper wipe.

**PRO TIP:** Keep moisture away from all electronics of the VL Force™ loader.

**REASSEMBLY:** Connect the 9 volt battery to the battery clip and then drop the battery (clip up) into the cavities on the left of the on/off button. Carefully tuck the extra wires around the on / off switch so that it won't get pinched when you put the loader back together again. Carefully put the top back onto the pedestal and screw the 3 Phillips screws back in.

**CAUTION:** To prevent shorting out the wiring, check to assure no wire is crimped between servo, circuit board or housing.

**PRO TIP:** Make sure the inside of both the top and bottom are completely dry before putting your loader back together again. Follow the same steps called out in the battery installation instructions.



**WARRANTY INFORMATION**

**WARRANTY: LIMITED 90 DAY WARRANTY (ORIGINAL PURCHASE RECEIPT REQUIRED)**

For 90 days from date of purchase, Viewloader® will repair or replace this loader free of charge if defective in material or workmanship. This warranty gives you specific legal rights. You may also have other rights which may vary from state to state. Service is available from authorized Viewloader® Service Centers. A list of these is available at Viewloaders website at [www.viewloader.com](http://www.viewloader.com) or by calling Viewloader® at 800-755-5061. These Service Centers generally offer the quickest service.

If you would rather return your loader to Viewloader® please call customer service at 800-755-5061 for return authorization number and shipping address. (Authorization number must be visible on outside of shipping package to be accepted.)

Do not return any products via non-trackable services such as regular mail or parcel post. Such products may become lost and Viewloader® Inc. will not be responsible for replacement.

**PAINTBALL LOADERS OUT-OF-WARRANTY**

Authorized Service Centers will gladly repair any loaders out of warranty for a nominal charge to cover parts and labor. Repairs made by Service Centers will usually be faster and less expensive than those sent back to the factory. Go to [www.viewloader.com/service](http://www.viewloader.com/service) for service center locations near you. Prior to shipping out of warranty loaders, you must first call customer service at 800-755-5061 for return authorization number and shipping address. (Authorization number must be visible on outside of shipping package to be accepted.) Any out of warranty VLocity™ returned to Viewloader® must be shipped prepaid and include the repair fee. Please call the Customer Service number for current repair fees. Viewloader® will repair or replace the loader with a reconditioned unit of the same model. If payment is not included, you will be billed for the repair fee plus a \$4.00 invoicing fee. Upon receipt of payment, the loader or its replacement will be shipped to you. In the event that the loader includes no means of contacting the sender or no payment for repairs is received within 60 days of billing, the ownership of the loader will be forfeited and it will be disposed of at the discretion of Viewloader®.

**WARNING:** NEVER SHOOT AT ANYONE WITHOUT PROPER PROTECTIVE EQUIPMENT FOR EYES, EARS, THROAT AND HEAD, WHICH MUST BE WORN AT ALL TIMES. EYE PROTECTION MUST BE DESIGNED SPECIFICALLY FOR PAINTBALL USE. FAILURE TO FOLLOW THESE SAFETY PRECAUTIONS MAY RESULT IN BODILY INJURY INCLUDING BLINDNESS AND DEAFNESS

**TROUBLESHOOTING CHART**

For further assistance in troubleshooting your loader call Viewloader® customer service at 800-755-5061  
 For new information on Viewloader® products and upgrades, go to [www.viewloader.com](http://www.viewloader.com)

Symptom	Cause	Solution
Loader Is Not Functioning Or Is Losing Maximum Performance	Depleted Or Low Batteries	Replace Batteries
Loader Is Not Operating Properly	Broke Paint In The Loader	Clean The Loader
I Have Replaced Batteries And Cleaned My Loader And It Still Will Not Operate	Damaged Electronics	Visit A Local Service Center Or Contact Viewloader For Assistance At 877-877-GAME(4263)
The Loader jams	Too Many Paintballs In The Loader or low quality out of round paintballs	Leave Some Room For Ball Movement When Firing The Loader

**DIAGRAM A / DIAGRAMME A / DIAGRAMA A**

**International Service Center List**  
 List de Centre de Service Après-Vente International  
 Lista de Centros de Servicio Internacionales

<p>Puerto Rico:            Amado Gonzalez            Villa Flores E-9            Urb. Los Frailes            Guaynabo, PR 00969            787.790.8258            FAX: 787.720.5112            amagon@pric.net</p>	<p>South Africa:            Paintball City South Africa            P O Box 3090            Symridge 1420            27.11.828.7583            FAX: 27.11.828.7516            info@paintballcity.co.za            www.paintballcity.co.za</p>	<p>New Zealand:            Kilwell Sports            490 Te Ngae Road Rotorua            64.7.345.9094            FAX:64.7.345.5149            sports@kilwell.co.nz            www.kilwell.co.nz</p>
<p>Canada:            Kolder Canada            21 Grandview Cres.            Bradford, ON L3Z 2A5            905.775.9191            FAX: 905.775.6780            sales@koldercanada.com</p>	<p>France:            Sport Attitude            21 Avenue Rhin at Danube            72201 La Fleche Cedex            33.2.4348.5012            FAX: 33.2.43485005            www.sport-attitude.com</p>	<p>Brazil:            Mercenarios            Rua Roma, 620            C.J. 124A            Sao Paulo SP 05050-090            55.11.3871.1468            mercenarios@mercenarios.com.br            www.mercenarios.com.br</p>
<p>Mexico:            Security Private Planet SA de CV Blvd. Interlomas No. 5 Local G-6 Col. Lomas Anahuac Huixquilucan Estado de Mexico CP 52760            52.55.5290.8190            FAX: 52.55.5290.8353            info@xtremepplanet.com            www.xtremepplanet.com</p>	<p>Germany:            CMC Sport GmbH            Am Warfield 1            61169 Friedberg            49.6031.73.75.0            FAX: 49.6031.73.75.19            info@cmc-sport.com            www.cmc-paintball.com</p>	<p>Japan            K2 Japan Corporation            A Nishi-Sando Yamaki Bldg            3 28 6 Yoyogi Shiyu-ku            Tokyo 151-0053            FAX: 81.3.3320.8771            www.k2japan.com</p>

