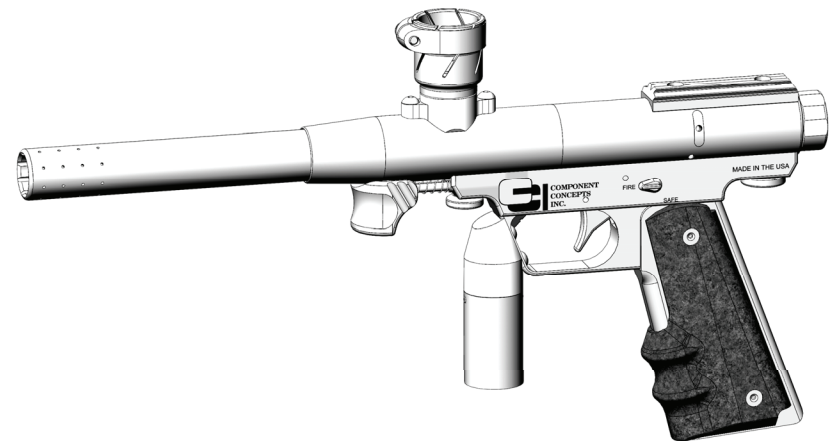


# *THE PHANTOM REVOLUTION®*

**Paintball Marker**

**User's Manual**



530 South Springbrook Road  
Newberg, OR 97132

Component Concepts, Inc., 530 South Springbrook Road, Newberg, OR 97132  
Phone: (503) 554-8095 Fax: (503) 554-9370  
[www.phantomonline.com](http://www.phantomonline.com) / [cci@phantomonline.com](mailto:cci@phantomonline.com)

---

# User's Manual

---

The information in this manual is subject to change without notice and does not represent a commitment on the part of Component Concepts, Inc. CCI reserves the right to make improvements to products without incurring any obligation to incorporate such improvements in products previously sold.

Copyright© 2011 by Component Concepts, Inc.  
All rights are reserved.

The PHANTOM REVOLUTION® is a registered trademark of Component Concepts, Inc.

# Notes


---

# Contents

---

## Precautions

Safety-Your Responsibility .....	1
----------------------------------	---

## Description and Operation

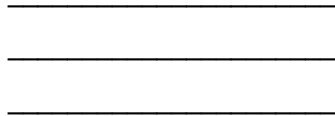
Introduction .....	2
Major Components .....	2
Specifications .....	3
Marker Safety .....	3
Gas Connections.....	4
Breech Sleeve Paintball Detent System.....	5
Power Piston .....	6
Velocity Adjustment.....	7
Regulator.....	7
Load & Fire .....	8

## Service and Maintenance

Bolt Cylinder.....	9
Connector Block & Slide Rods .....	10
O-Ring Illustration.....	11
Troubleshooting .....	12
Parts List Top .....	13
Exploded View Top .....	14
Exploded View Bottom .....	15
Parts List Bottom.....	16

Warranty .....	i
----------------	---

Notes .....	ii
-------------	----



PLACE  
NECESSARY  
POSTAGE  
HERE

**Component Concepts, Inc.**  
530 South Springbrook Road  
Newberg, OR 97132

# Precautions

## Safety-Your Responsibility

The Phantom Revolution is designed and built to provide safe and dependable service if handled according to instructions. Read and understand the instructions and warnings in this manual before using the Phantom Revolution. Failure to do so could result in personal injury or property damage.

These precautions are given here for your safety and for the protection of the marker. Review them carefully before using or performing general maintenance or repairs on the marker.

**WARNING**

The Phantom Revolution is a dangerous weapon if mishandled. This marker is not a toy. Follow the basic rules of safe firearms handling and the laws governing the ownership and use of gas-fired markers. Careless handling of any gas powered marker may cause serious injury.

- Do not handle this marker until you are thoroughly familiar with its mechanical characteristics.*
- Always wear approved eye protection when operating this or any paintball marker.*
- Pressurize only while the marker is in use.*
- Keep exposed flesh away from escaping compressed gas .*
- When not in use engage marker safety "ON".*
- Never point the marker in the direction of anything you do not intend to mark.*
- Never look directly into the barrel.*
- Use only .68 caliber paintballs.*
- Do not attempt to service the marker without first removing the compressed gas source.*
- Do not fire the marker at a target that is less than two feet away.*

**WARNING**

The Phantom Revolution is a dangerous weapon if mishandled. Never clean, lubricate, disassemble, assemble, or work on the marker while it is pressurized. Observe safety precautions.

(fold)

### Warranty Registration Card

Product Purchased \_\_\_\_\_ Price \_\_\_\_\_

Serial Number \_\_\_\_\_ Date Purchased \_\_\_\_\_

Owner \_\_\_\_\_

Address \_\_\_\_\_

City \_\_\_\_\_ State \_\_\_\_\_ Zip \_\_\_\_\_ Phone \_\_\_\_\_

Purchased From \_\_\_\_\_

Address \_\_\_\_\_

City \_\_\_\_\_ State \_\_\_\_\_ Zip \_\_\_\_\_ Phone \_\_\_\_\_

Comments \_\_\_\_\_

\_\_\_\_\_

\_\_\_\_\_

\_\_\_\_\_

---

# Warranty

---

To confirm your warranty, fill out and return the enclosed warranty registration card.

The limited warranty begins on the date of purchase. This warranty applies to all models of the Phantom products and accessories manufactured or sold by Component Concepts, Inc. (CCI).

CCI pledges to you, the owner, that the Phantom products are free from defects in materials and workmanship for 180 days.

During the term of this warranty, at no additional charge to the owner, excluding shipping, CCI will repair or replace any defective parts of the Phantom products with new or, at the option of CCI, refurbished parts.

The owner must prepay any shipping charges. In addition, the owner is responsible for insuring any product returned and assumes the risk of loss during shipping. All parts and products replaced under this warranty become the property of CCI.

Component Concepts, Inc.  
530 South Springbrook Road  
Newberg, OR 97132

We are open 9 AM to 5 PM PST Monday through Friday.  
Phone: 503-554-8095 Fax: 503-554-9370  
cci@phantomonline.com

---

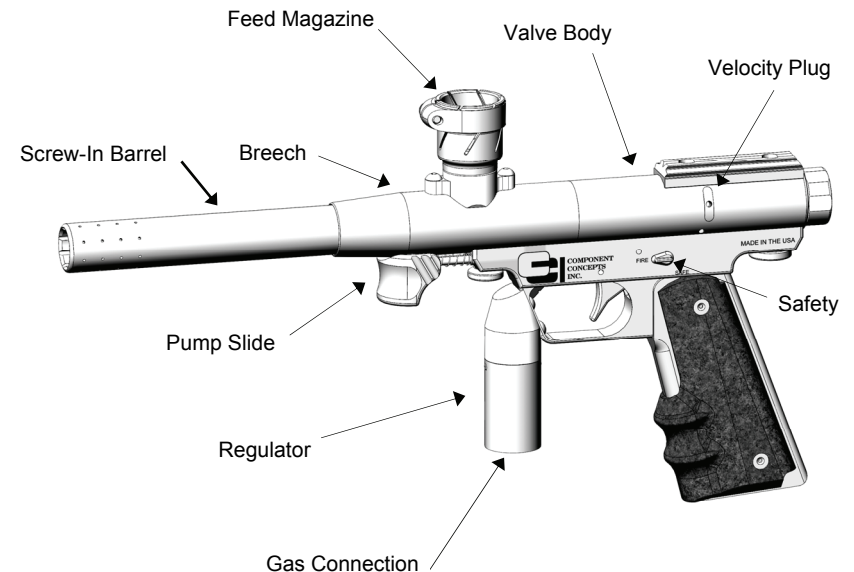
# Description and Operation

---

## Introduction

The Phantom Revolution is a .68 caliber, pump loading gas powered marker designed to fire paintballs. Squeezing the trigger releases the power piston and fires the paintball. The pump slide action of pulling back and releasing to a forward position feeds a paintball into the firing chamber.

## Major Components

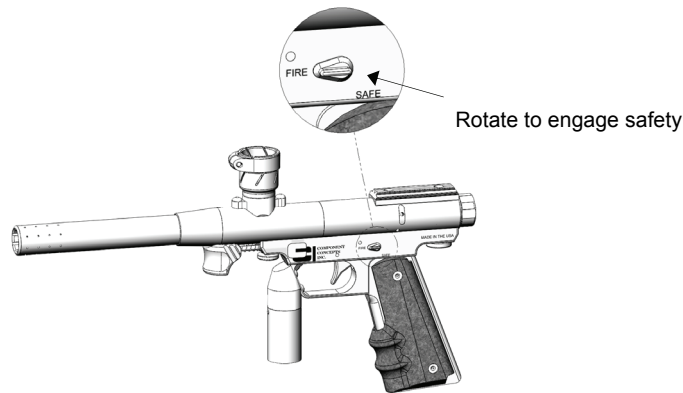


**Specifications**

Caliber	.68
Mechanism	Pump Feed
Power	CO <sub>2</sub> or Compressed Gas
Safety	Sear Disengagement
Velocity	Adjustable 200-320 FPS
Sights	3/8 Dovetail Rail
Weight	1.9 - 2.2 lbs.
Length	13 to 25 inches
Barrel	Phantom Thread 7/8-14
Ball Detent	Breech Sleeve
Material	6061 T-6 Alloy

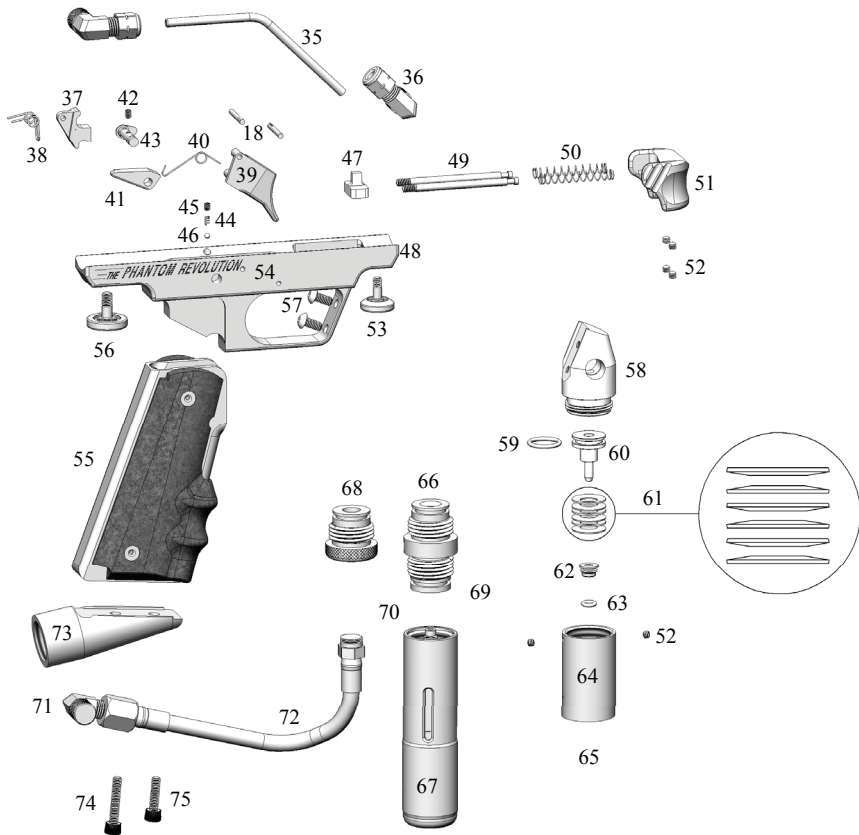
**Marker Safety**

The safety is a rotation lever. The safety provides protection against accidental or unintentional discharge. To engage the safety, rotate the lever down to "safe" position. This action disengages the trigger link from the sear.

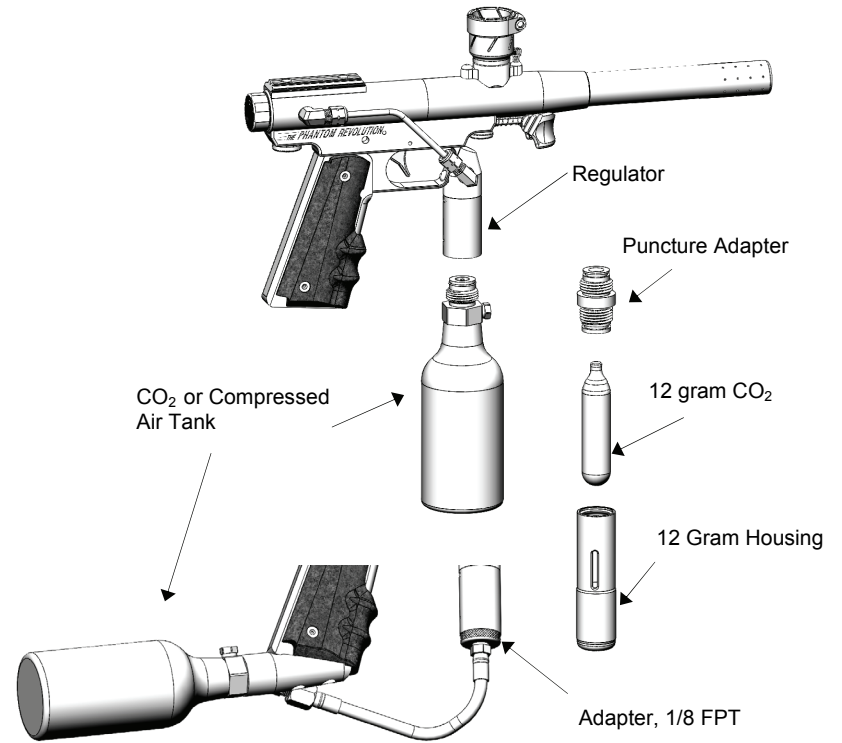


Item #	Part#	Description
35	1013	Gas Line
36	9434	Compression Fitting
37	1015	Sear
38	1017	Sear Spring
39	1210	Trigger
40	1212	Trigger Spring
41	1211	Trigger Link
42	1203	4-40x1/8 SSS
43	1201	Safety
44	1204	Safety Spring
45	9523	4-48 Set Screw
46	9522	3/32 Ball
47	1099	Connector Block
48	1090	Slide Guide
49	1092	Slide Rod
50	1095	Pump Slide Spring
51	1094	Pump Slide
52	1091	6-32x1/8 Set Screw
53	9311	8-32 Thumb Screw
54	1200	Trigger Frame
55	3045	45 Style Grip w/ Hogue
56	9316	10-32 Thumb Screw
57	9458	8-32x1/4 BHS
58	1060	Upper Regulator Body
59	1066	#14 O-Ring
60	1065	Regulator Piston
61	1061	Disc Spring
62	1062	Retainer Seat
63	1063	#7 O-Ring
64	1067	Lower Regulator Body
65	1064	Base Seal
66	9415	Puncture Assembly
67	9410	Housing
68	9455	Reduce
69	9406	#14x2 O-Ring
70	9038	Piercing Pin Assembly
71	9436	90 Degree Elbow
72	9456	Hose Assembly
73	3050	Bottom Line ASA
74	3051	10-32x3/4 SHCS
75	9322	10-32x1/2 SHCS

### Exploded View Bottom



### Gas Connections



Bottom Line to Vertical Regulator

The vertical regulator has either the valve thread connection or 1/8 pipe thread adapter. The valve thread will accept a tank or 12 gram changer directly.

To remove the puncture adapter use a 3/8" hex key.

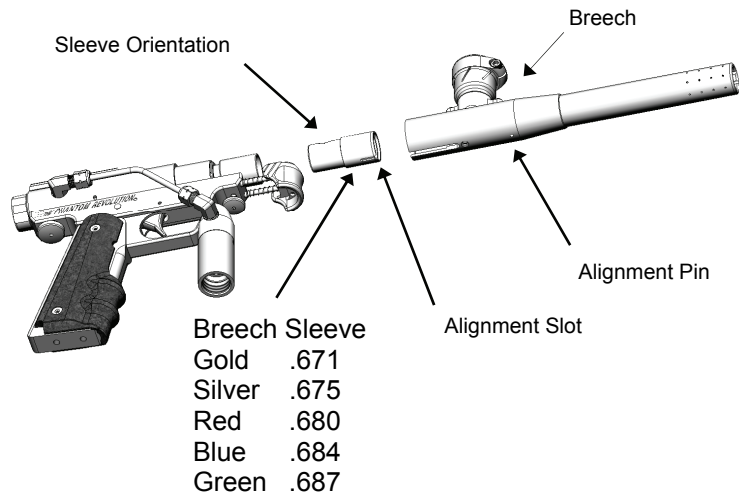
**Breach Sleeve Paintball Detent System**

The breach sleeve is the paintball detent system and has 5 sizes. With the proper paintball match to sleeve the paintball will not roll through the barrel and will help maintain constant velocities.

Unscrew the front thumbscrew and slide the breach / barrel assembly forward off the trigger frame.

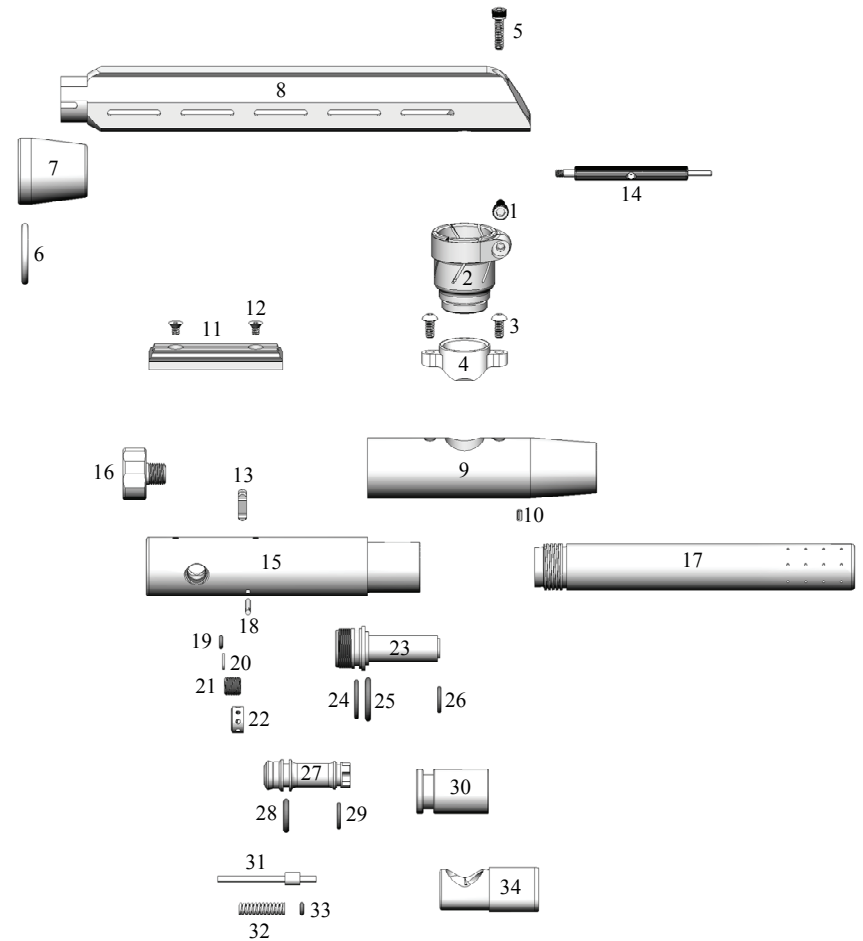
Drop the breach sleeve out of the breach. If the breach sleeve sticks in the breach completely unscrew the barrel and push the breach sleeve out from the front of the breach.

The sleeve slot aligns with pin in the breach for proper position when inserting into the breach.



*Note: Loosening the barrel makes it easier to unscrew front thumb screw. Insure during normal operation barrel is screwed snug to compress sleeve against power port O-ring.*

**Exploded View Top**





Item #	Part#	Description
1	9024	10-32 x 3/8 SHCS
2	9023	Clamping Feed Neck
3	9215	8-32x3/8 BHS
4	1100	Feed Magazine
5	9013	8-32x5/8 SHCS
6	9024	Ball Retainer
7	9413	Feed Cap
8	1115	12 Round Feed Tube
9	1080	Breech
10	1081	Slotted Pin 3/32x3/16
11	1109	Rear Sight Rail
12	1110	6-32x1/4 FHS
13	1105	Plug
14	1020	Tool, Extraction / Velocity
15	1011	Side Port Valve Body
16	9470	Pressure Gauge
17	900X	Barrel 6", 8", 11", 14"
18	1016	PinTrigger/Sear 3/32x3/4
19	1024	#6 O-Ring
20	1021	Washer
21	1019	Retainer
22	1018	Velocity Adjuster
23	1050	Power Port
24	1051	#16 O-Ring
25	1052	#114 O-Ring
26	1053	#12 O-Ring
27	1030	Power Piston
28	1036	#111 O-Ring
29	1035	#12 O-Ring
30	1072	Bolt Cylinder
31	1040	Plunger
32	1041	Buffer Spring
33	1025	#6 O-Ring
34	1082	Breech Sleeve

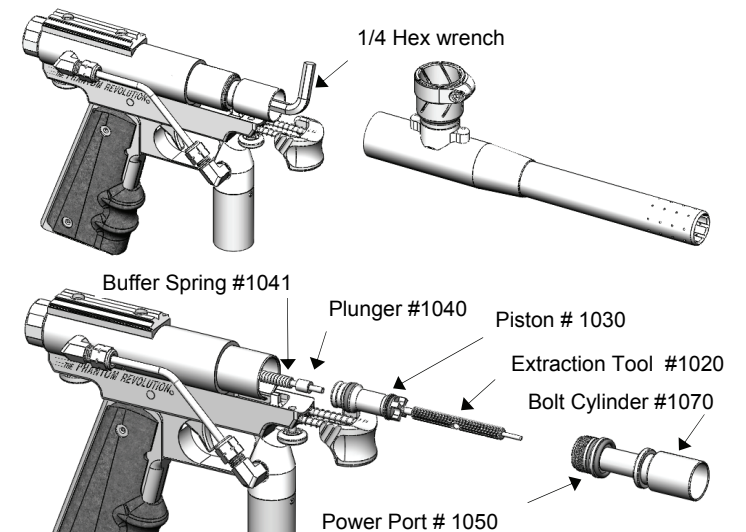
**Power Piston**

The power piston is available in different sizes to yield the major desired velocity of the paintball. The smaller diameter power piston is used with compressed air and the larger diameter piston is used for CO<sub>2</sub>.

Remove the breech / barrel assembly from the trigger frame. Loosen the rear thumb screw so the bolt cylinder clears the connector block.

Unscrew the power port from valve body with a 1/4 hex key. Using the 6-32 threaded end of the extraction tool screw into the power piston and pull out of valve body. Extract plunger and buffer spring and install into selected power piston. Seat piston with plunger and spring in power port and screw assembly into valve body.

Align bolt cylinder with connector block and tighten rear thumb screw. Slide breech / barrel assembly in place and tighten thumbs.

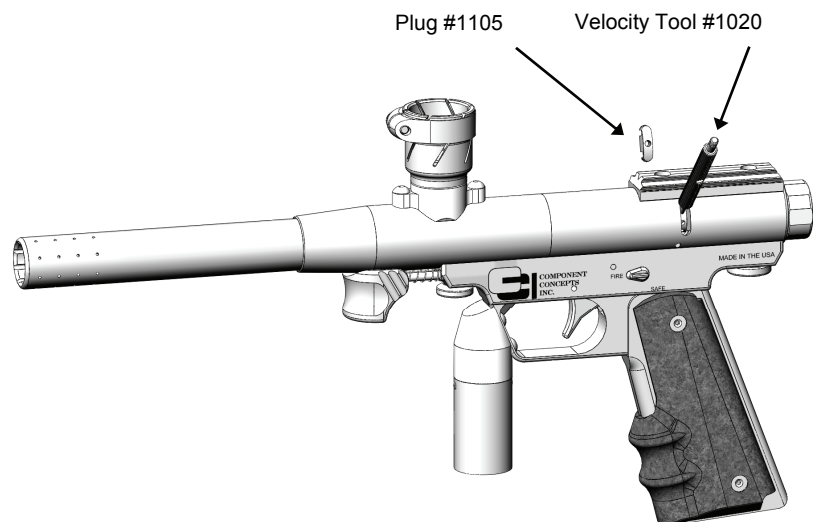


## Velocity Adjustment

Paintball fit, temperature, pressure input, altitude and gas type influences the feet per second performance.

Use the velocity tool to remove the cap cover. Insert the pin end into the velocity adjuster and rotate clockwise to increase velocity and counterclockwise to decrease velocity.

If unable to achieve the desired range (275-300 FPS) change the power piston and or the breech sleeve.



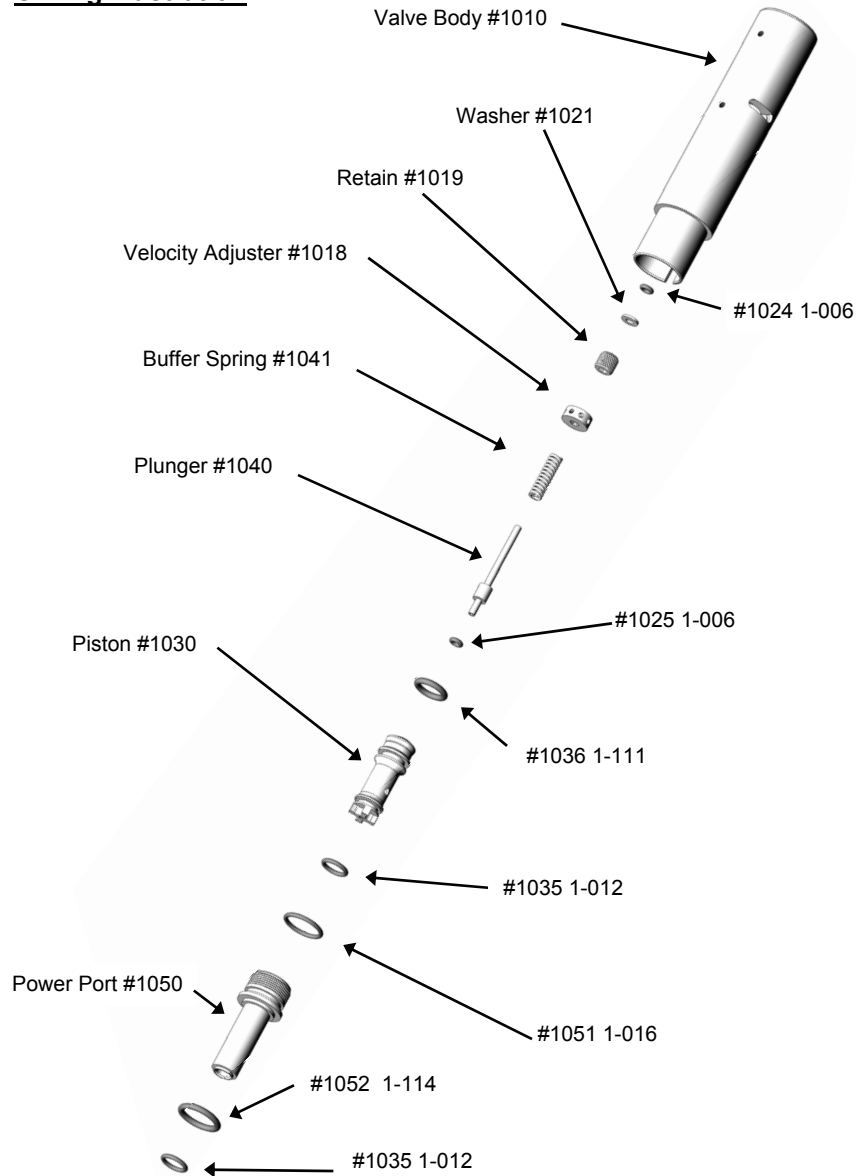
## Regulator

The regulator is pre-set @ 700+ psi with a 6 disc stack. However, the disc springs can be flipped from series to parallel adding or subtracting 50 psi. Normally you would not change stack orientation unless velocity can not be adjusted with power piston, breech sleeve and or velocity adjuster.

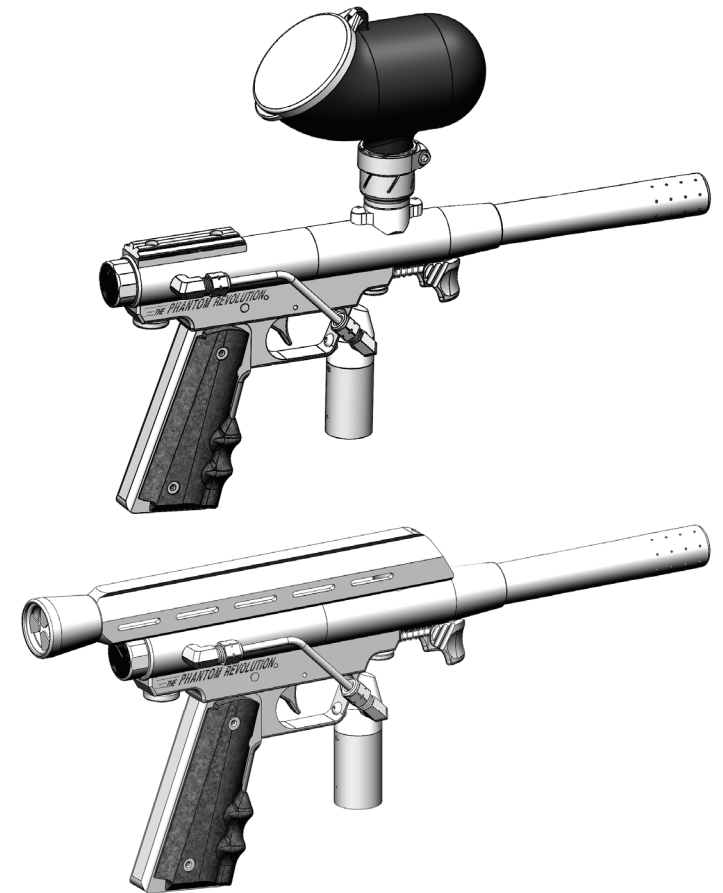
## Troubleshooting

Trouble	Cause	Remedy
Gas leak: Down the barrel Trigger frame Valve body & frame Regulator Body	O-ring	Replace O-rings: Part 1035 Part 1024 / 1036 Part 1051 Part 1066
Will not fire	Not pressurized  Safety	Check gas source  Rotate lever to fire
Will not feed paintball	Paintball opening	Bolt cylinder engaged with connector block
Velocity	Too high  Too low  Out of minor or major adjustment range  Breech sleeve  Regulator	Turn adjustment counterclockwise  Turn adjustment clockwise  Replace piston: Larger size less velocity  Smaller size greater velocity  Match paintball size to breech sleeve  Change disc stack Replace disc spring
Pump slide sticks	Debris on rods  Set screws	Clean rods  Adjust or tighten set screws

**O-Ring Illustration**



**Load and Fire Paintballs**



Observe all safety precautions. Connect gas source, pour paintballs into ammo loader or stock class feed tube. When ready to fire, rotate the safety lever to the "FIRE" position. Move the pump slide back until it stops then release. The quicker the action the less likely you are to double feed a paintball. Insure the pump slide is in the forward position. Squeeze the trigger to fire the paintball.

---

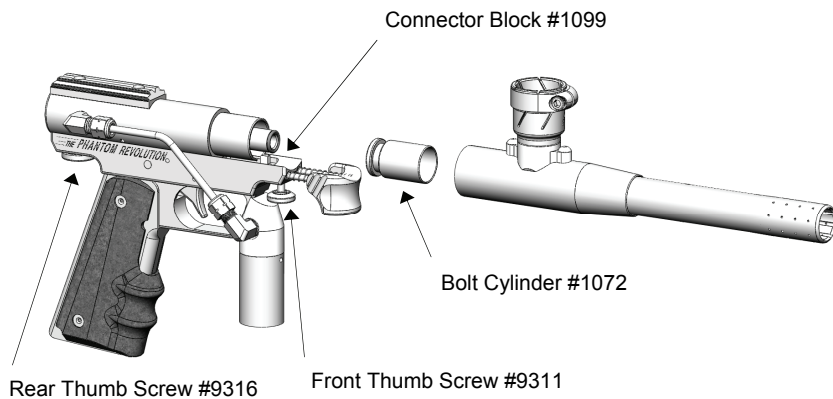
# Service and Maintenance

---

## Bolt Cylinder

Unscrew front thumb screw and separate the breech from the valve body by pulling apart.

Loosen the rear thumb screw and slide out the bolt cylinder. Clean and lightly oil. Insure the slot in the cylinder bolt aligns with the connector block when reassembling.



## Connector Block / Slide Rods

The pump slide does not need to be removed. A drop of light weight oil on the stainless steel rods is all that is needed.

