

Technical Info: grease/thread lock application & marker assembly



The Angel 1 of NPPL S7 and Millennium winners, Stockholm Joy's Max Lundqvist.

Gloss black Angel 1 straight out of the box.

**Same performance.
Fewer airmiles .**



ANGEL¹



UK: WDP LTD 444 (0)121 328 2228 USA: WDP PAINTBALL INC. 949 548 2688
The Angel is protected by the following Patents: USA: 6 003 504, 6 138 656, 6 311 682, 6 748 938,
6 739 322, 6 615 814, D473 910, D484 926.
UK: 2 345 953, 2 342 710, 2 379 494, 2 384 292, 2 352 022, 2 391 063. Plus other Patents pending.



KISStechnology
Go to: wdp.tv

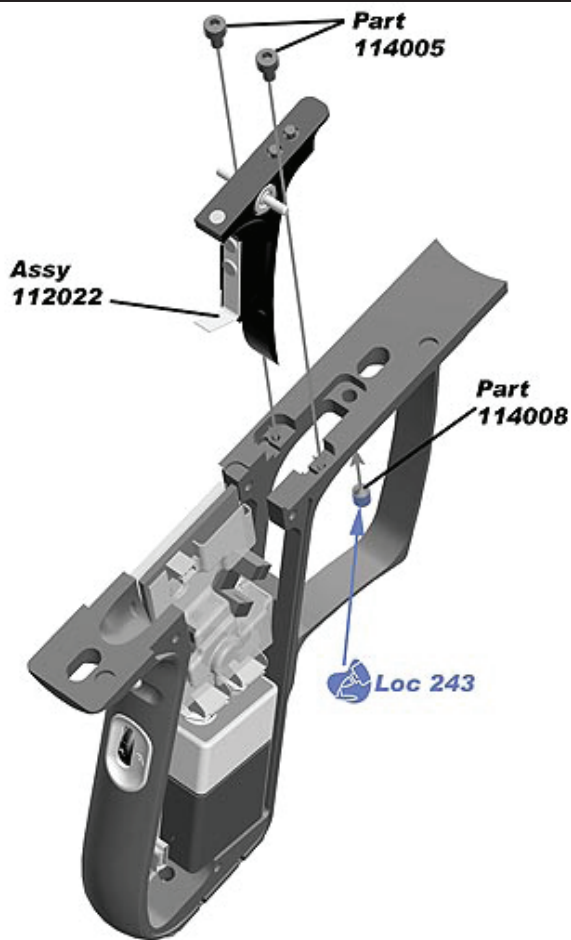




	assembly details	grease/thread lock info	page
GRIP FRAME		•	3
GRIP FRAME	•		4
GRIP FRAME	•		5
ADB, EYE COVER AND VALVE STEM		•	6
ASA	•		7
ASA		•	8
BARREL TIP	•		9
BODY PINNING	•		10
BOLT	•		11
EXHAUST VALVE	•		12
EXHAUST VALVE & VOLUME CHAMBER PLUG	•	•	13
EYE RIBBON	•	•	14
FEED TUBE	•	•	15
FEED TUBE	•		16
FEED TUBE AND FOREGRIP	•	•	17
FORE GRIP CAP	•		18
GRIP CHEEK	•		19
GRIP FRAME & ASA		•	20
LPR	•		21
LPR - showing spring stack	•		22
LPR & LPR CHAMBER END PLUG		•	23
LPR CHAMBER END PLUG	•		24
LPR	•		25
MINI REG INSERT		•	26
MINI REG	•		27
RAM ADJUSTER KNOB	•		28
RAM		•	29
RAM	•		30
RAM & ADJUSTER KNOB		•	31
SOLENOID SIGHT RAIL AND BACKPLATE		•	32
TRIGGER	•		33
TRIGGER	•		34
VOLUME CHAMBER MAINTENANCE PLUG	•		35
VOLUME CHAMBER END PLUG	•		36

GRIP FRAME

grease/thread lock application



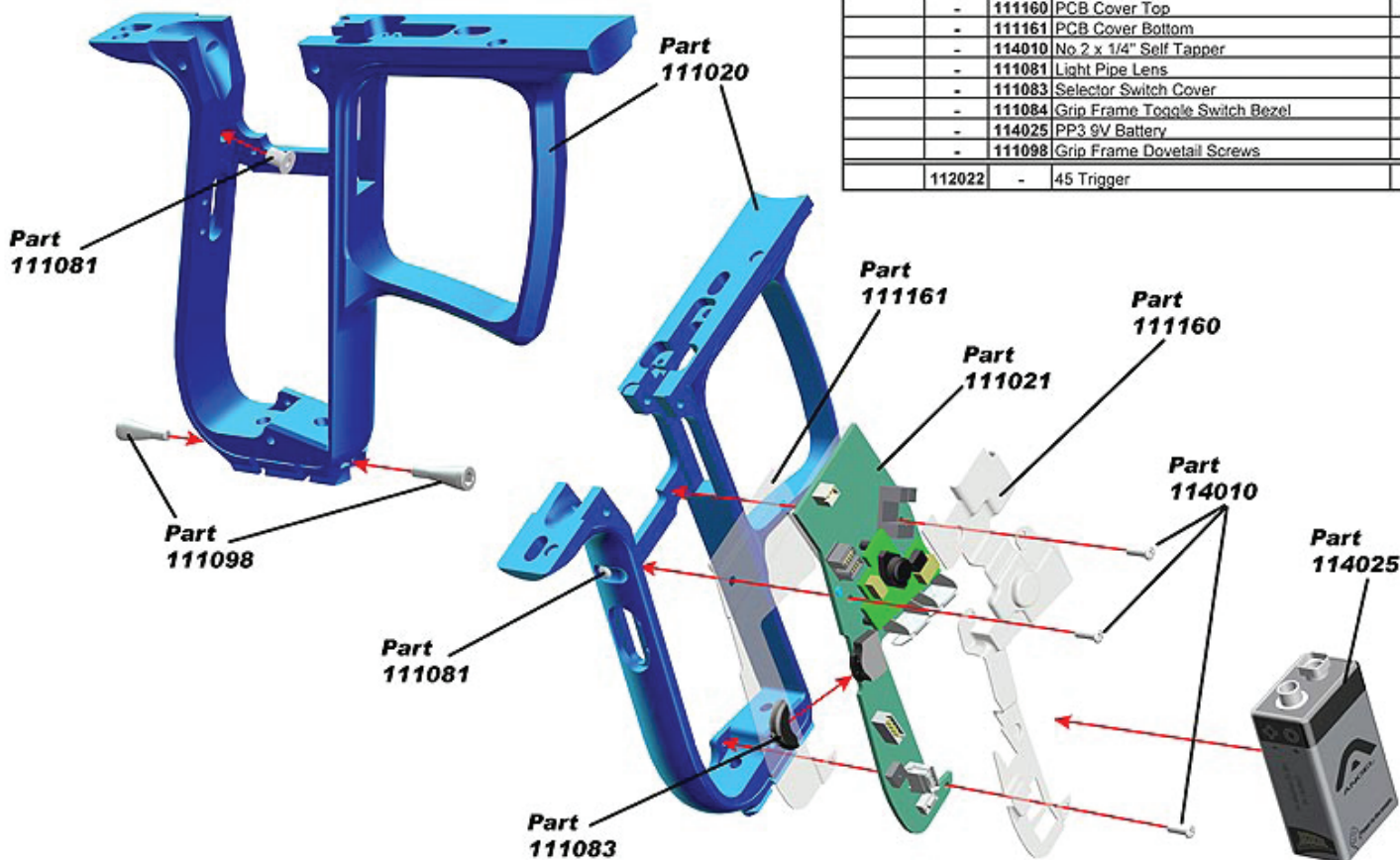
<input checked="" type="checkbox"/>		Molykote 33L or EM-30L Silicon Grease
<input type="checkbox"/>		Loctite 542 Thread High Pressure Sealant
<input type="checkbox"/>		Loctite 638 Thread Retainer
<input checked="" type="checkbox"/>		Loctite 243 Thread Lock
<input type="checkbox"/>		Loctite 480 Cyanoacrylate Adhesive (Black)
<input type="checkbox"/>		Loctite 415 Cyanoacrylate Adhesive (Clear)



ANGEL1

GRIP FRAME

assembly part 1

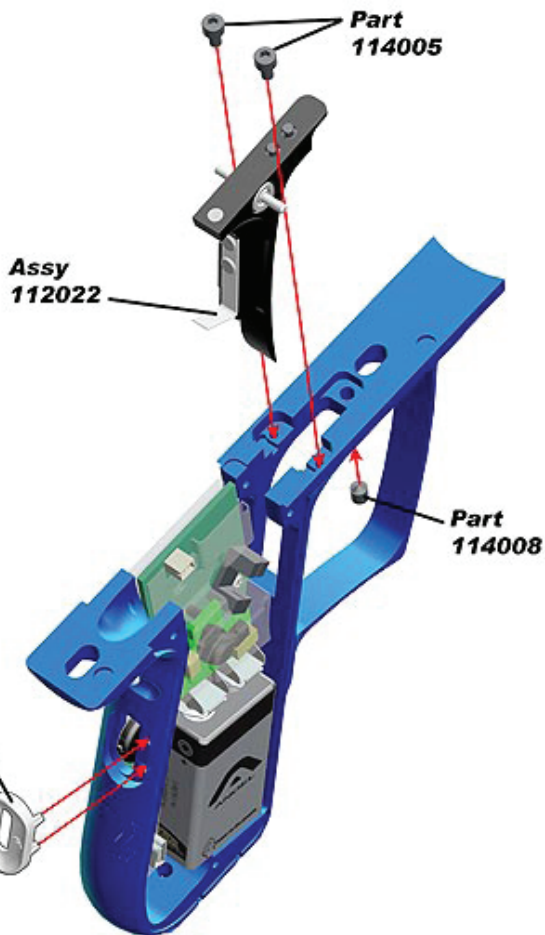


-	111020	45 Grip Frame	1
-	114008	Grub Cone Point M4 x 5.0 Steel Black Ox.	1
-	111021	PCB	1
-	111160	PCB Cover Top	1
-	111161	PCB Cover Bottom	1
-	114010	No 2 x 1/4" Self Tapper	3
-	111081	Light Pipe Lens	1
-	111083	Selector Switch Cover	1
-	111084	Grip Frame Toggle Switch Bezel	1
-	114025	PP3 9V Battery	1
-	111098	Grip Frame Dovetail Screws	2
112022	-	45 Trigger	1

ANGEL1

GRIP FRAME

assembly part 2



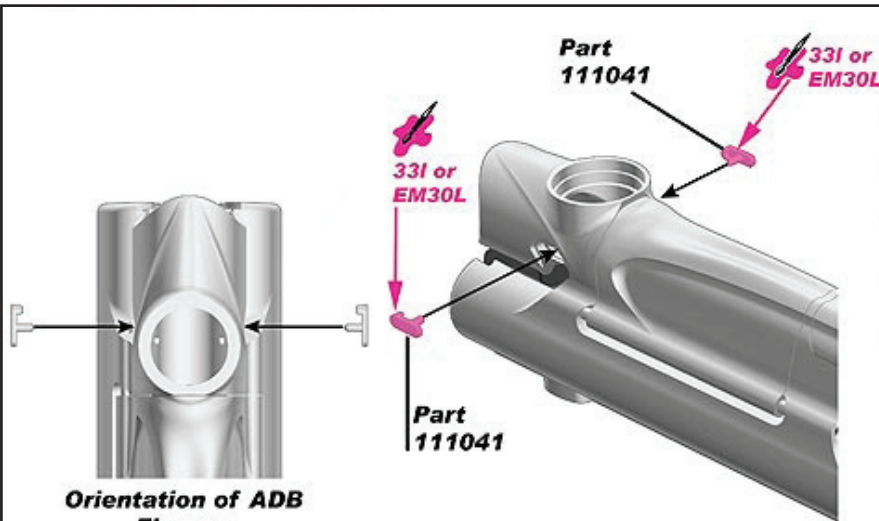
-	111020	45 Grip Frame	1
-	114008	Grub Cone Point M4 x 5.0 Steel Black Ox.	1
-	111021	PCB	1
-	111160	PCB Cover Top	1
-	111161	PCB Cover Bottom	1
-	114010	No 2 x 1/4" Self Tapper	3
-	111081	Light Pipe Lens	1
-	111083	Selector Switch Cover	1
-	111084	Grip Frame Toggle Switch Bezel	1
-	114025	PP3 9V Battery	1
-	111098	Grip Frame Dovetail Screws	2
112022	-	45 Trigger	1



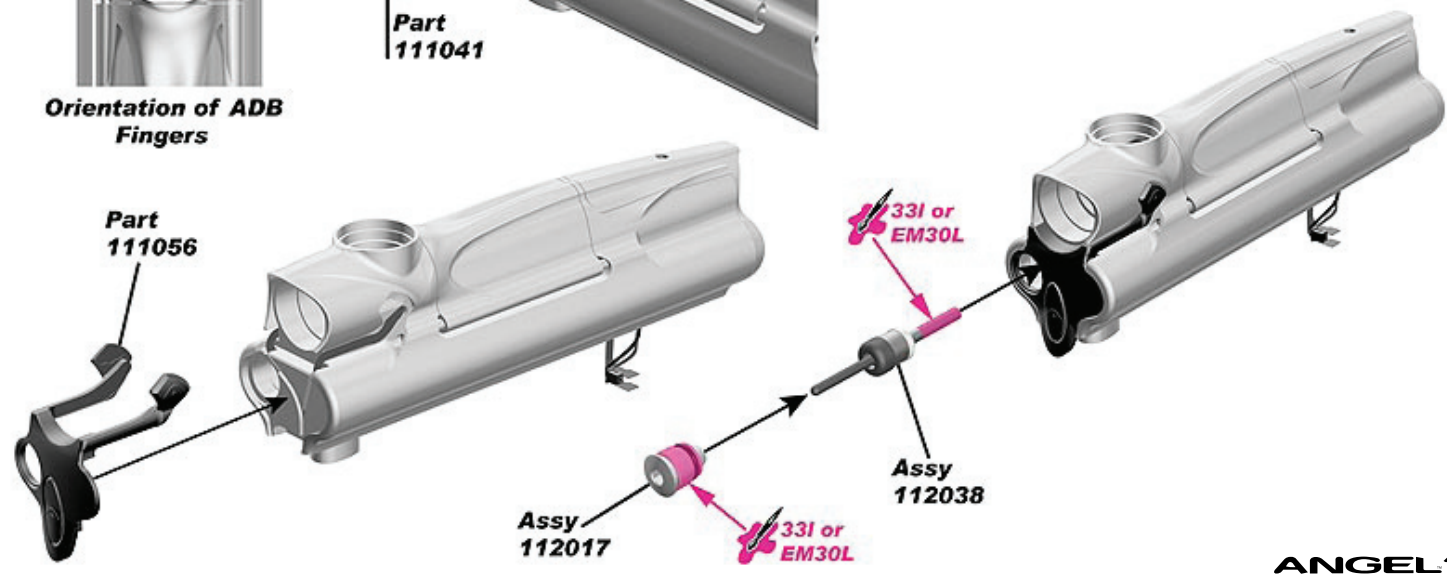
ANGEL 1

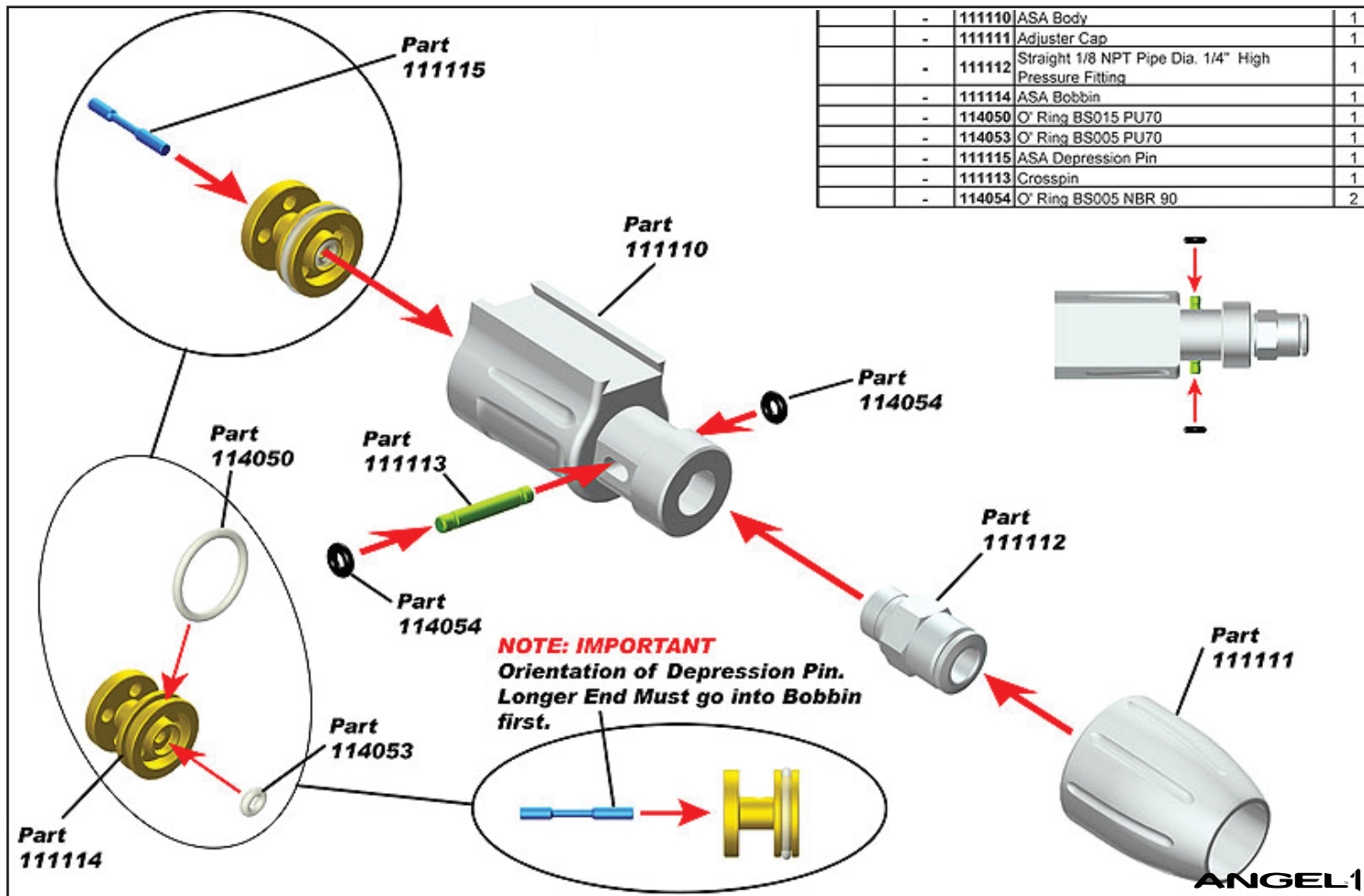
ADB, EYE COVER AND VALVE STEM

assembly & grease/thread lock application

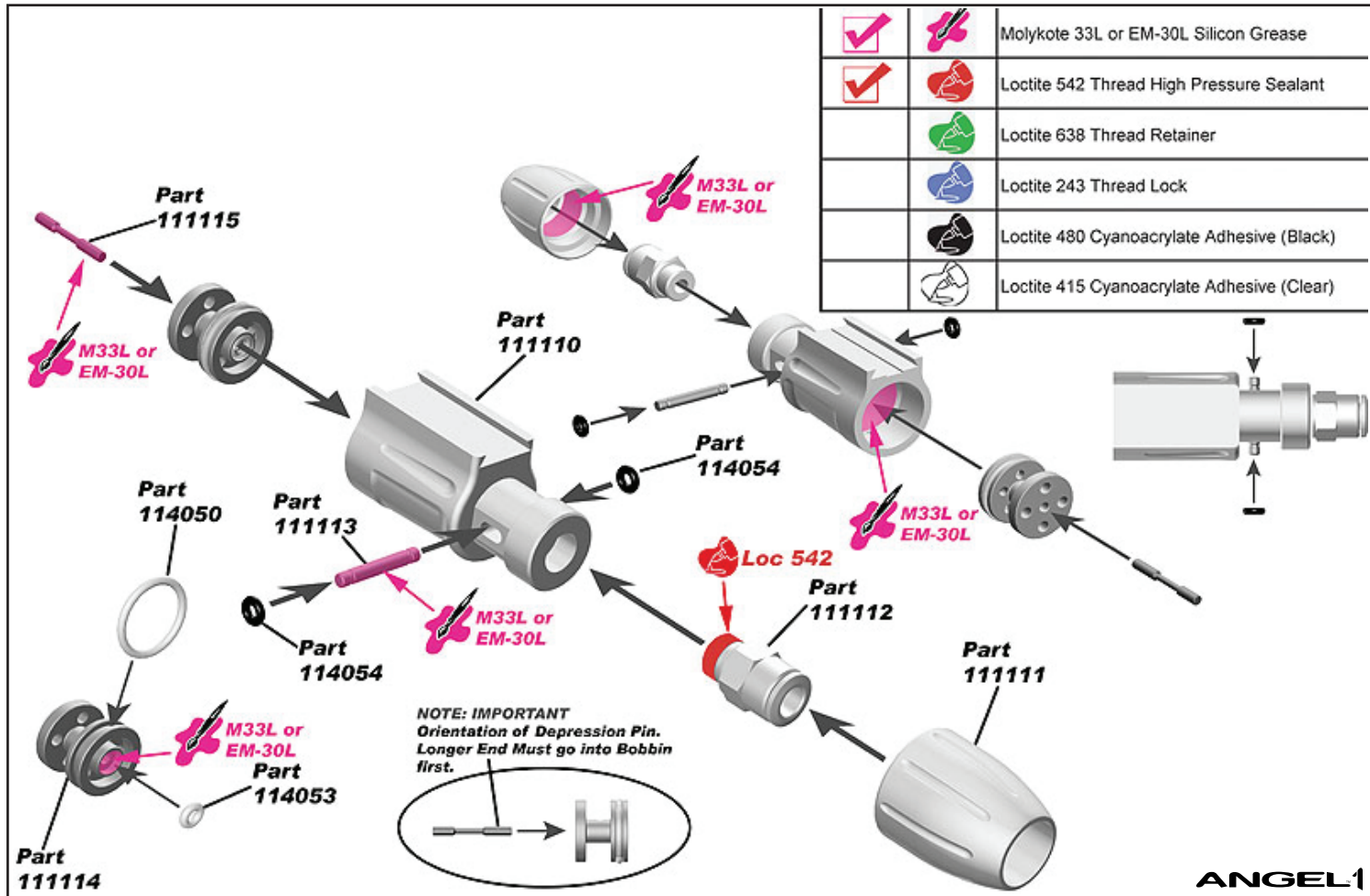


		Molykote 33L or EM-30L Silicon Grease
		Loctite 542 Thread High Pressure Sealant
		Loctite 638 Thread Retainer
		Loctite 243 Thread Lock
		Loctite 480 Cyanoacrylate Adhesive (Black)
		Loctite 415 Cyanoacrylate Adhesive (Clear)



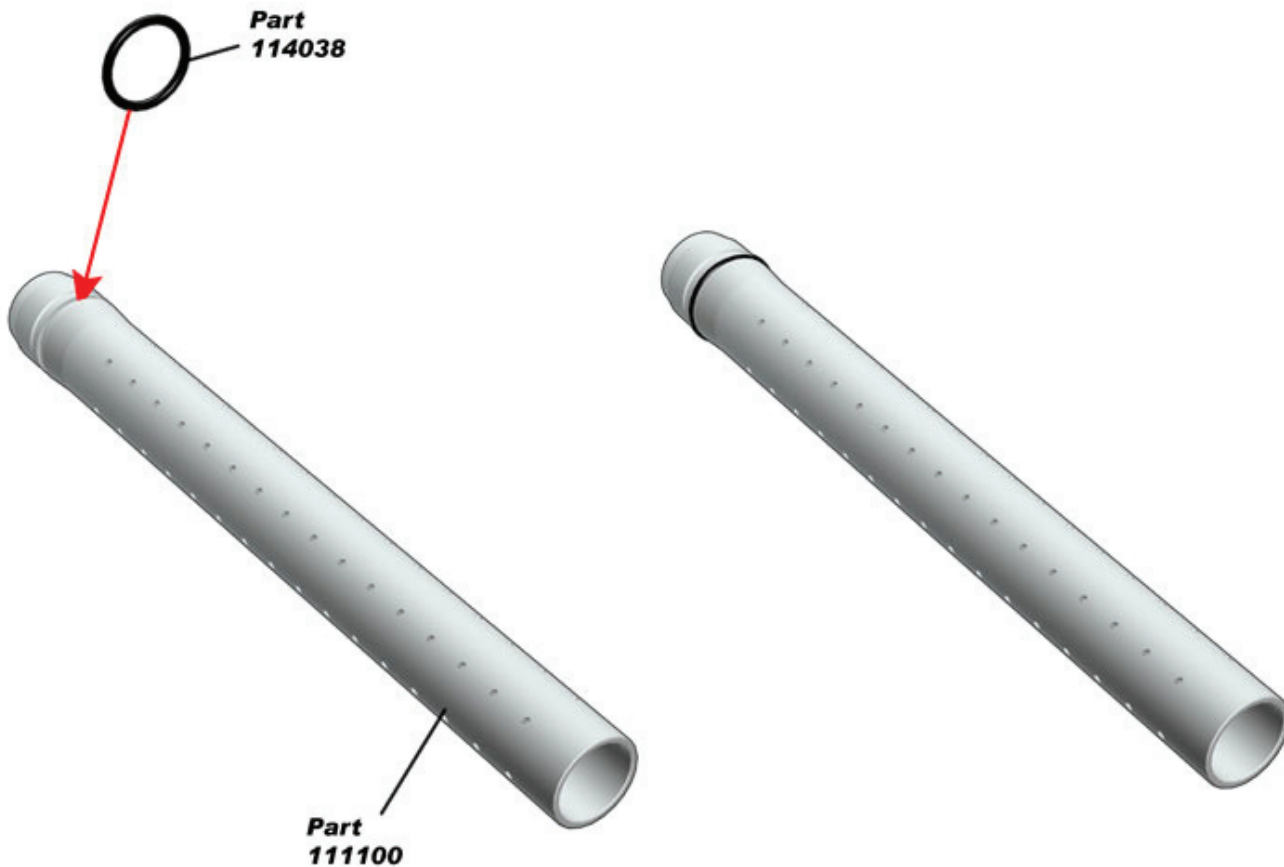


ASA assembly & grease/thread lock application

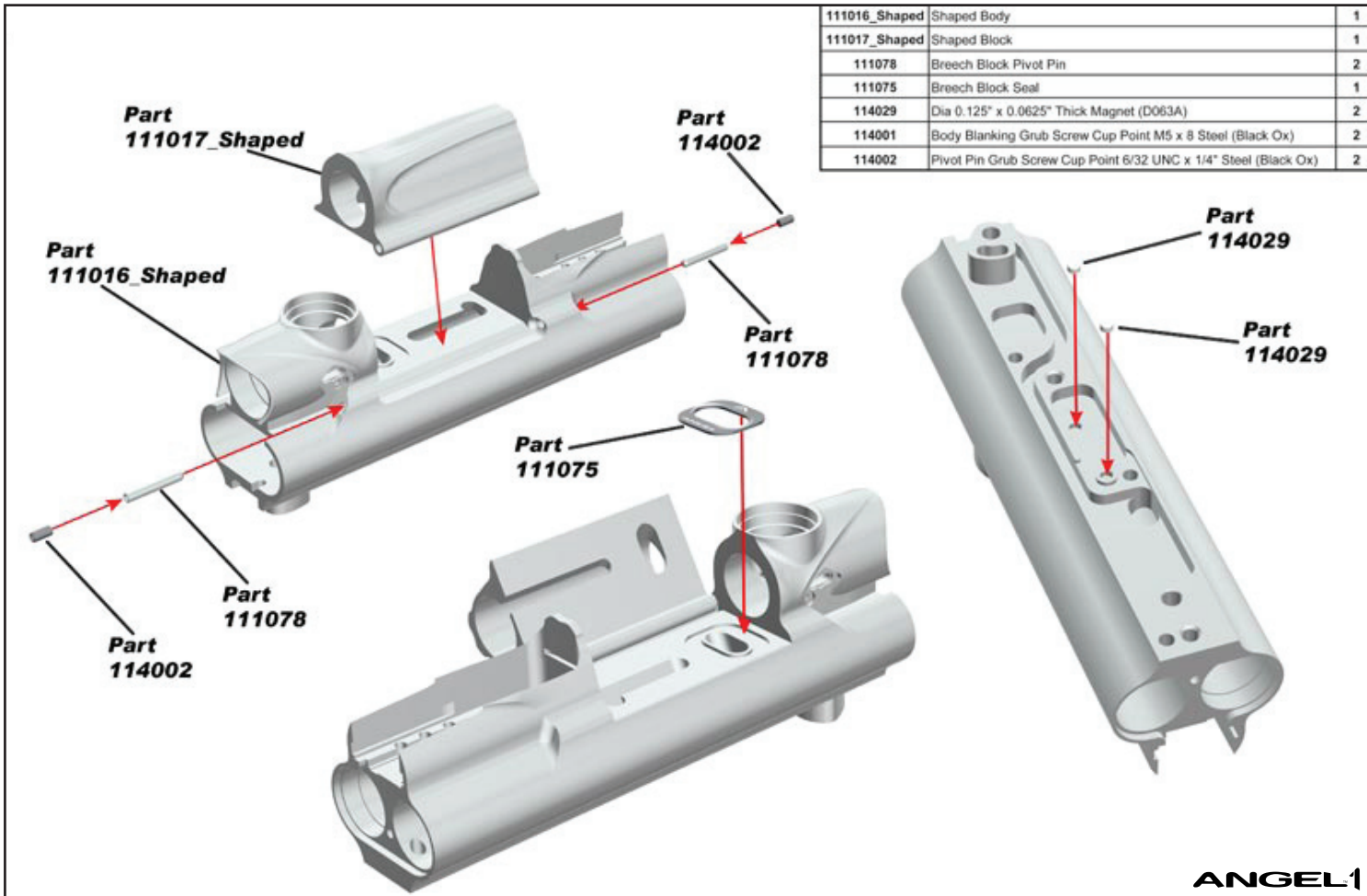


		Molykote 33L or EM-30L Silicon Grease
		Loctite 542 Thread High Pressure Sealant
		Loctite 638 Thread Retainer
		Loctite 243 Thread Lock
		Loctite 480 Cyanoacrylate Adhesive (Black)
		Loctite 415 Cyanoacrylate Adhesive (Clear)

BARREL TIP assembly



BODY PINNING assembly

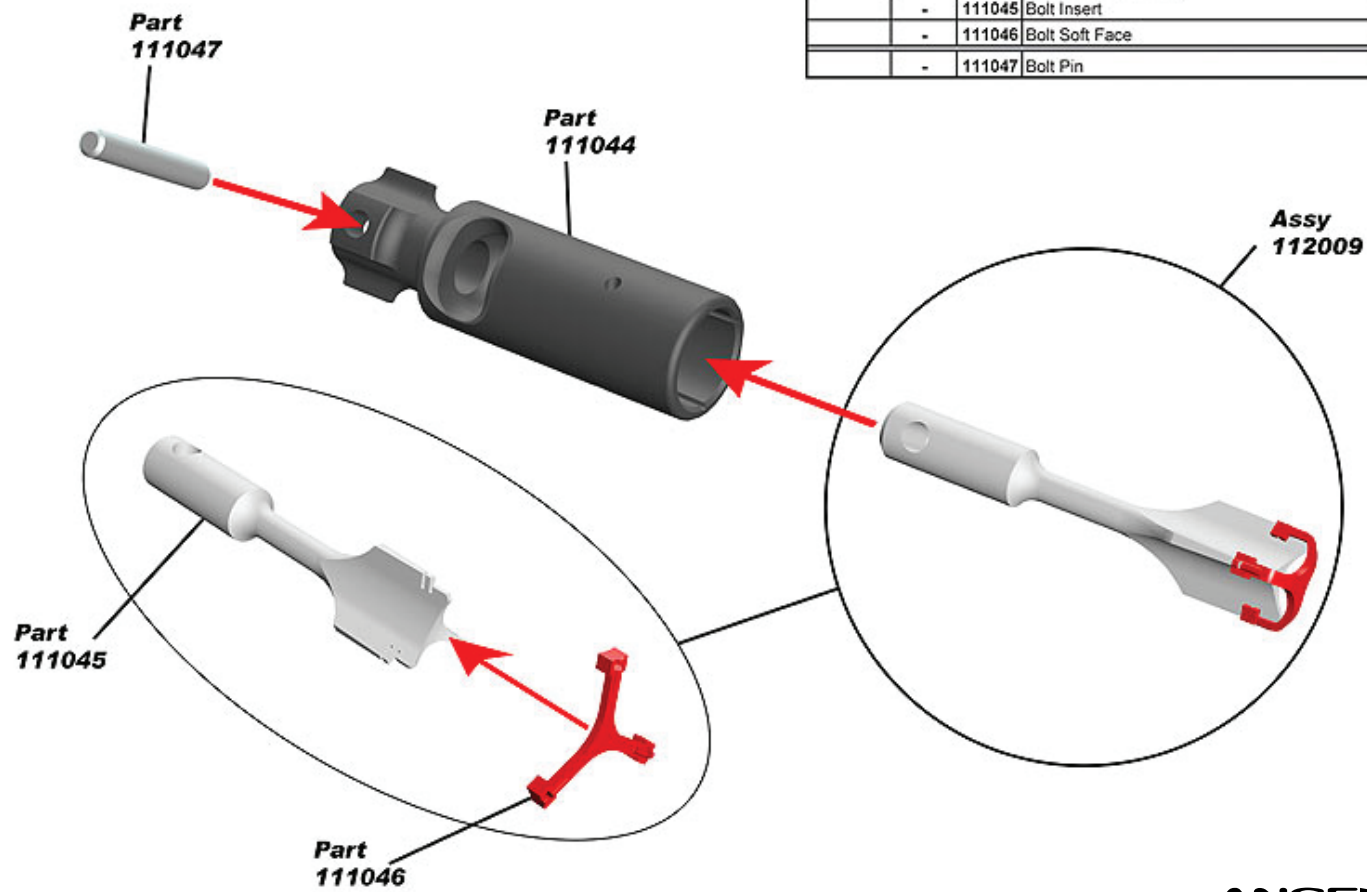


111016_Shaped	Shaped Body	1
111017_Shaped	Shaped Block	1
111078	Breech Block Pivot Pin	2
111075	Breech Block Seal	1
114029	Dia 0.125" x 0.0625" Thick Magnet (D063A)	2
114001	Body Blanking Grub Screw Cup Point M5 x 8 Steel (Black Ox)	2
114002	Pivot Pin Grub Screw Cup Point 6/32 UNC x 1/4" Steel (Black Ox)	2

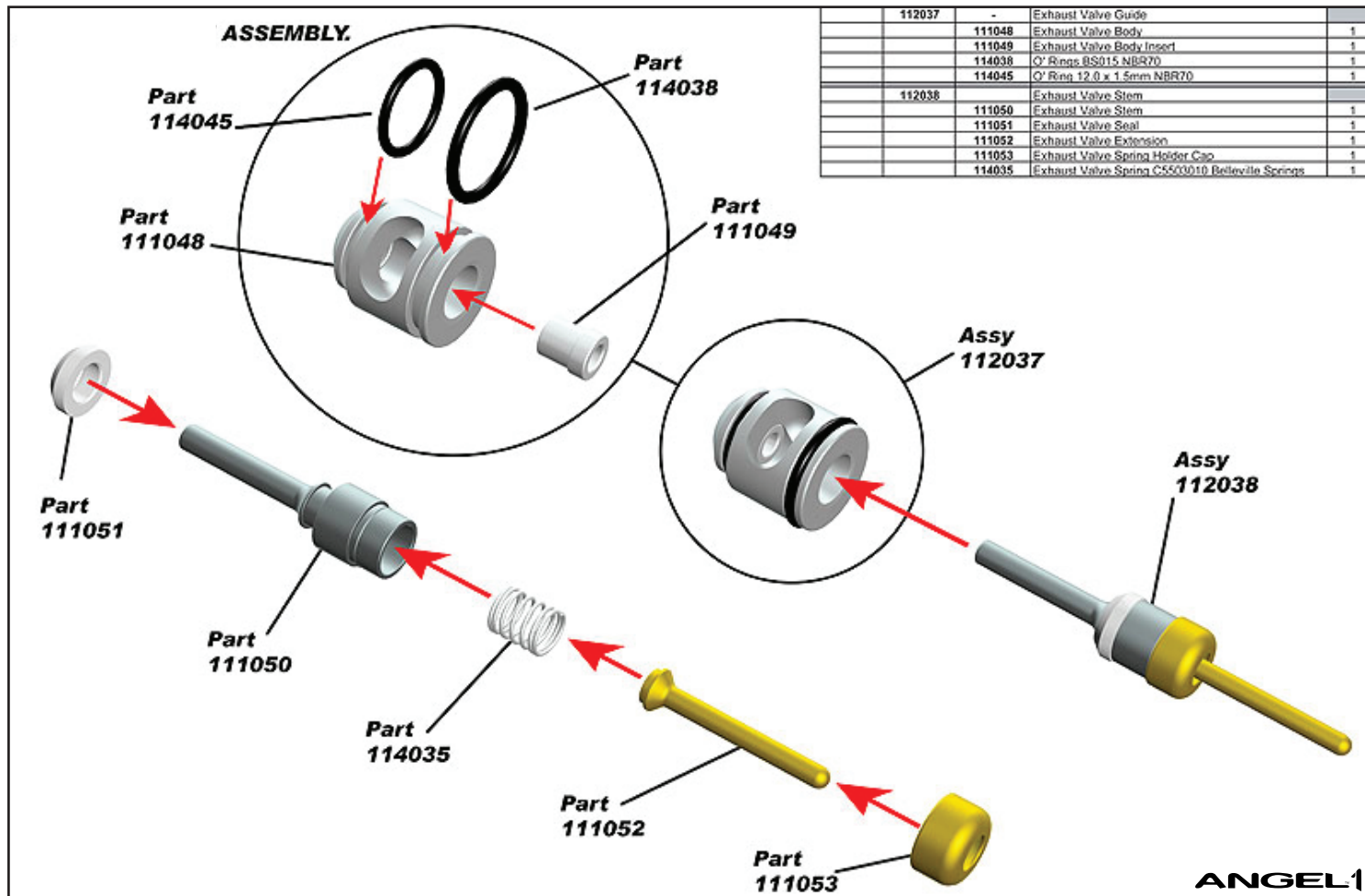
BOLT assembly



	-	111044	Bolt Outer	1
	112009	-	Bolt Insert Assembly	
	-	111045	Bolt Insert	1
	-	111046	Bolt Soft Face	1
	-	111047	Bolt Pin	1

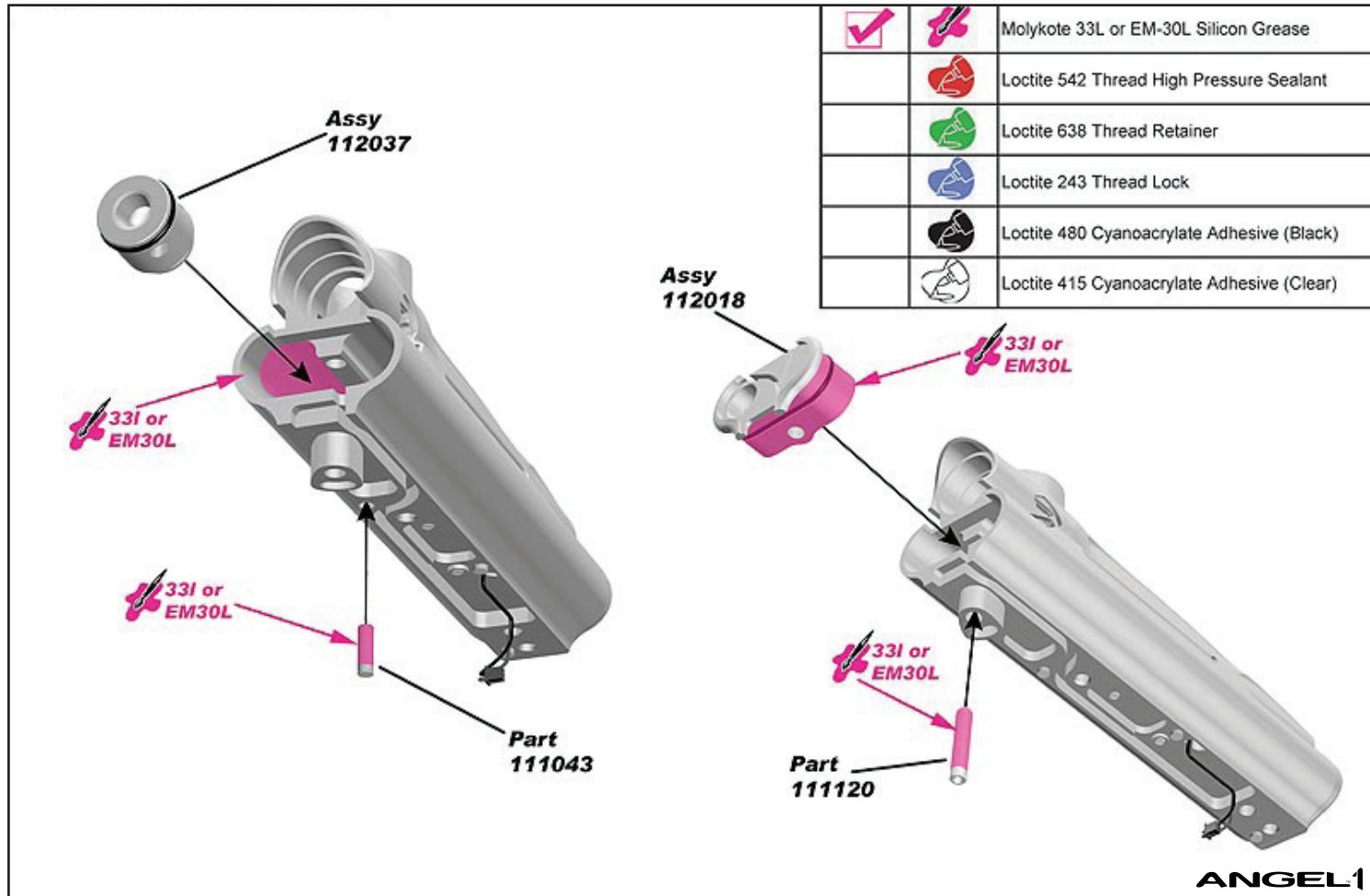


EXHAUST VALVE assembly



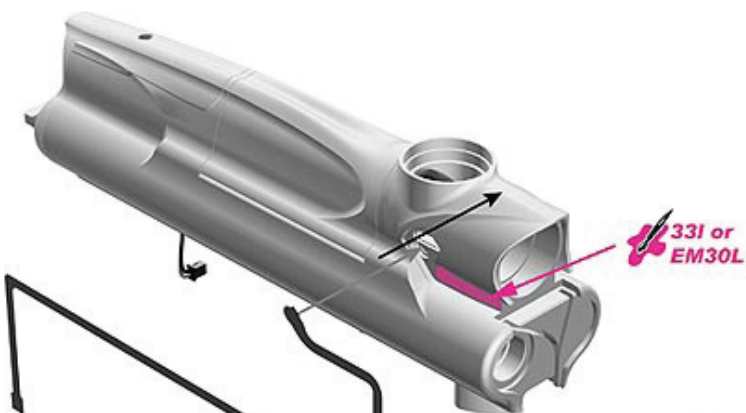
EXHAUST VALVE & VOLUME CHAMBER PLUG

assembly & grease/thread lock application



EYE RIBBON

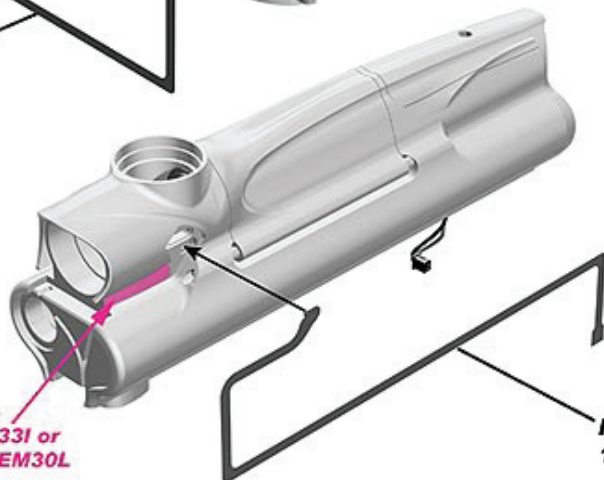
assembly & grease/thread lock application



Part
111069

33L or
EM30L

		Molykote 33L or EM-30L Silicon Grease
		Loctite 542 Thread High Pressure Sealant
		Loctite 638 Thread Retainer
		Loctite 243 Thread Lock
		Loctite 480 Cyanoacrylate Adhesive (Black)
		Loctite 415 Cyanoacrylate Adhesive (Clear)



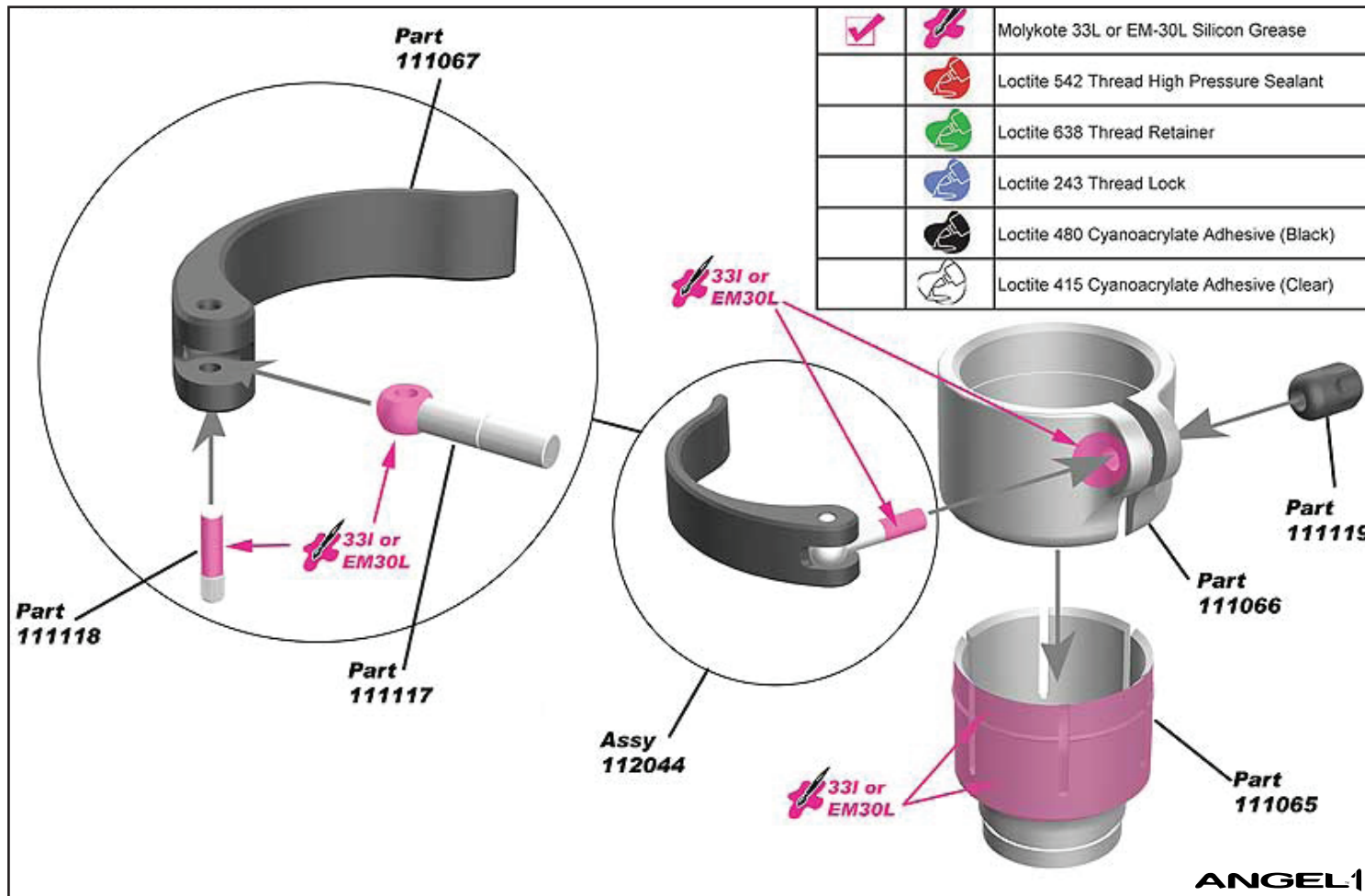
Part
111068



ANGEL 1

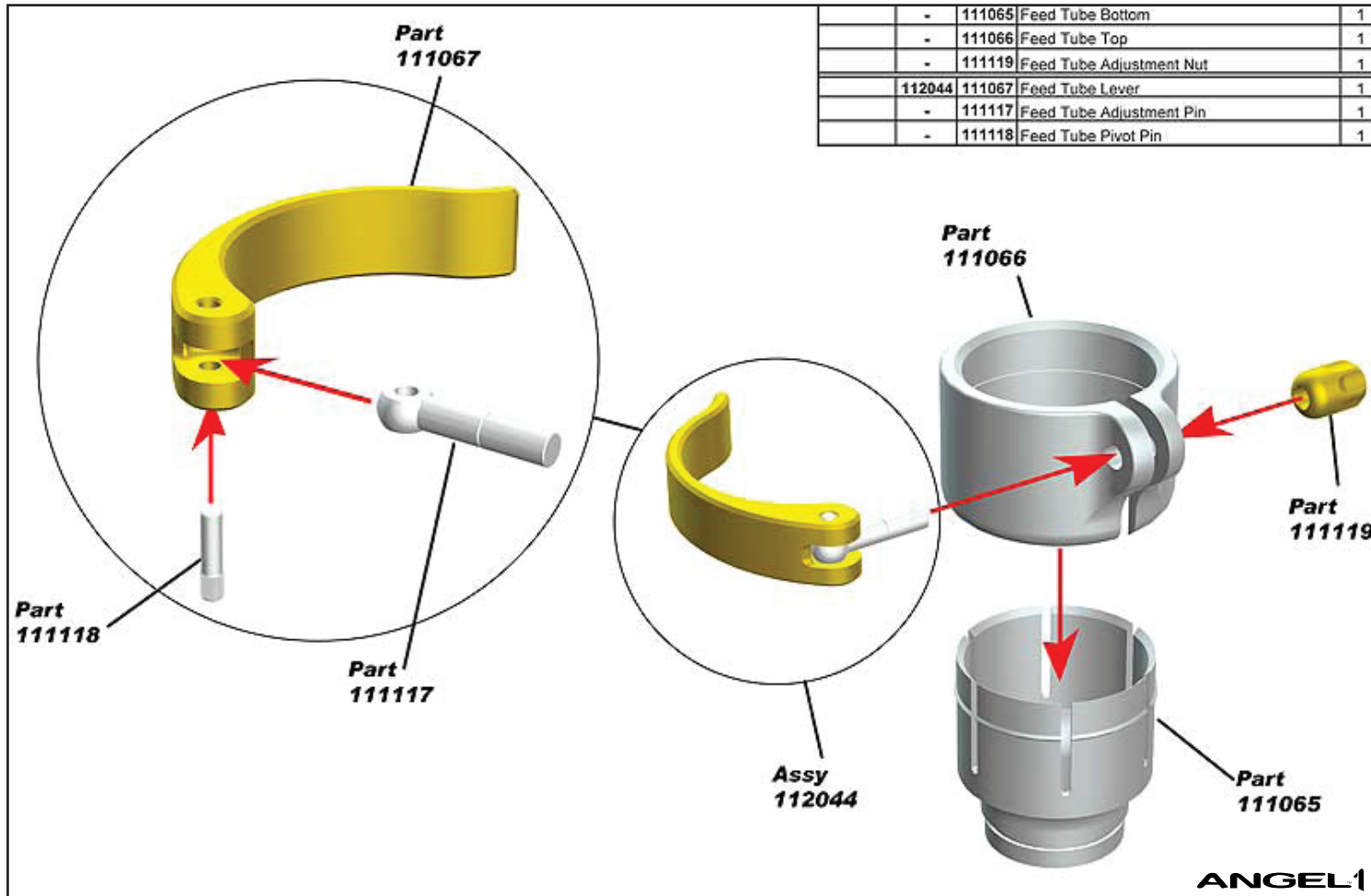
FEED TUBE

assembly & grease/thread lock application



ANGEL1

FEED TUBE assembly

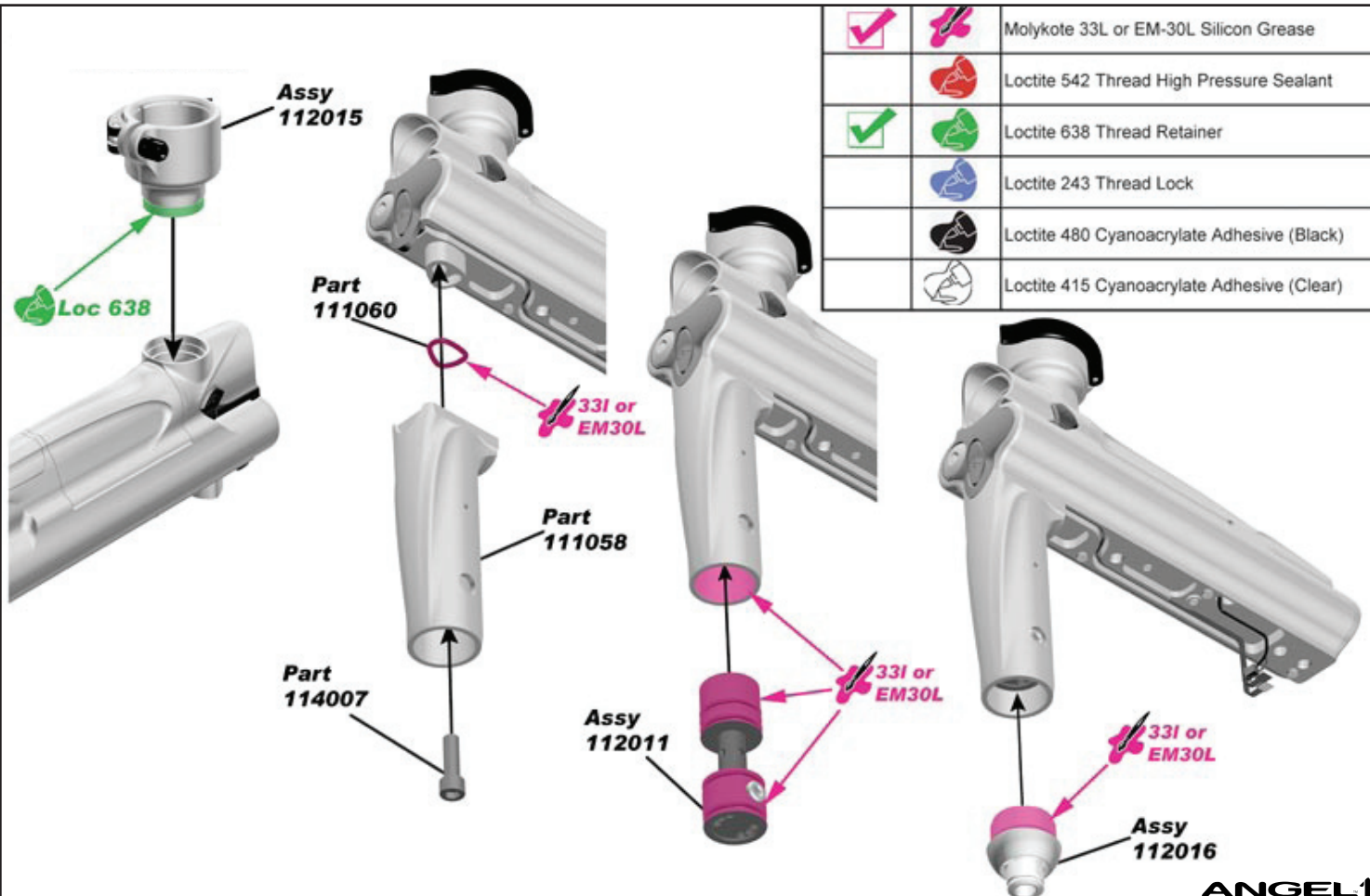


-	111065	Feed Tube Bottom	1
-	111066	Feed Tube Top	1
-	111119	Feed Tube Adjustment Nut	1
112044	111067	Feed Tube Lever	1
-	111117	Feed Tube Adjustment Pin	1
-	111118	Feed Tube Pivot Pin	1

ANGEL1

FEED TUBE AND FORE GRIP

assembly & grease/thread lock application



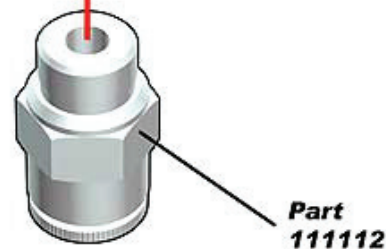
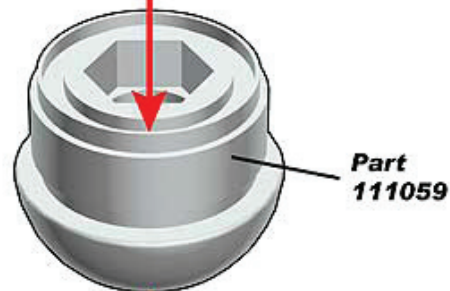
		Molykote 33L or EM-30L Silicon Grease
		Loctite 542 Thread High Pressure Sealant
		Loctite 638 Thread Retainer
		Loctite 243 Thread Lock
		Loctite 480 Cyanoacrylate Adhesive (Black)
		Loctite 415 Cyanoacrylate Adhesive (Clear)

ANGEL 1

FORE GRIP CAP assembly



**Assy
112016**

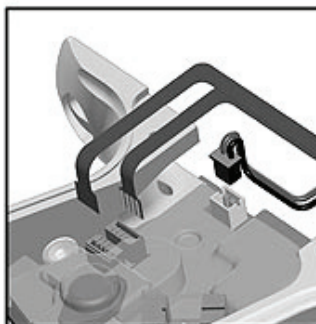


ANGEL1

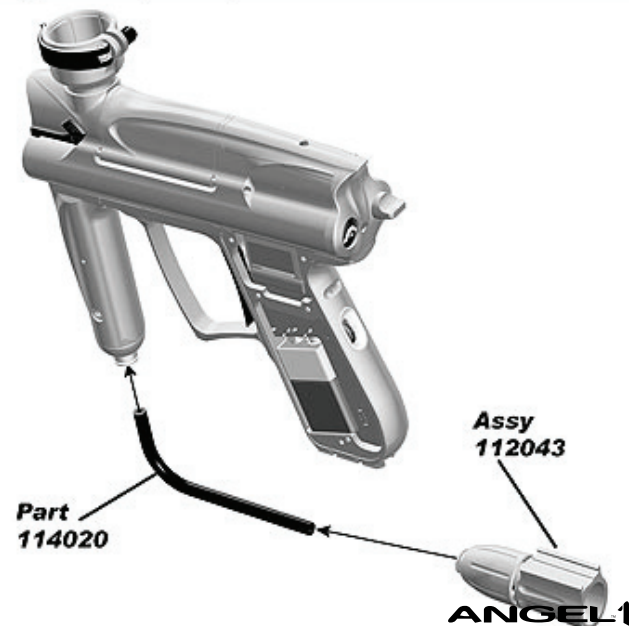
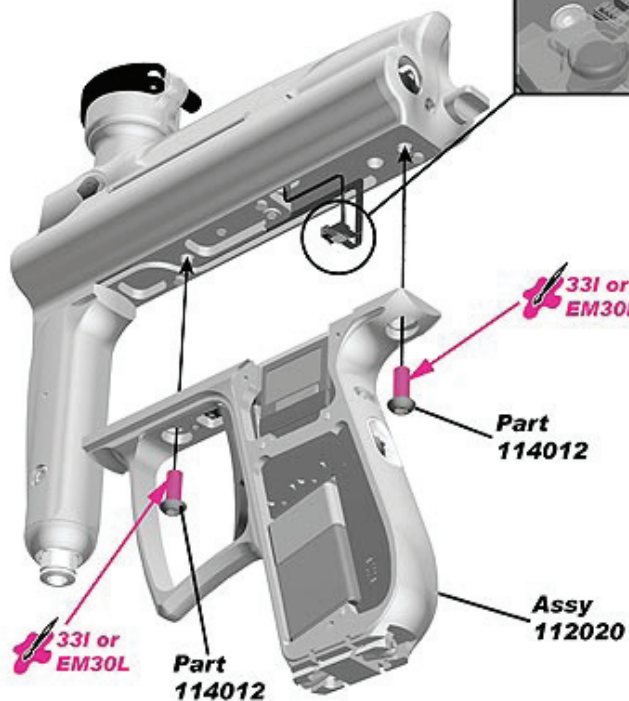


GRIP FRAME & ASA

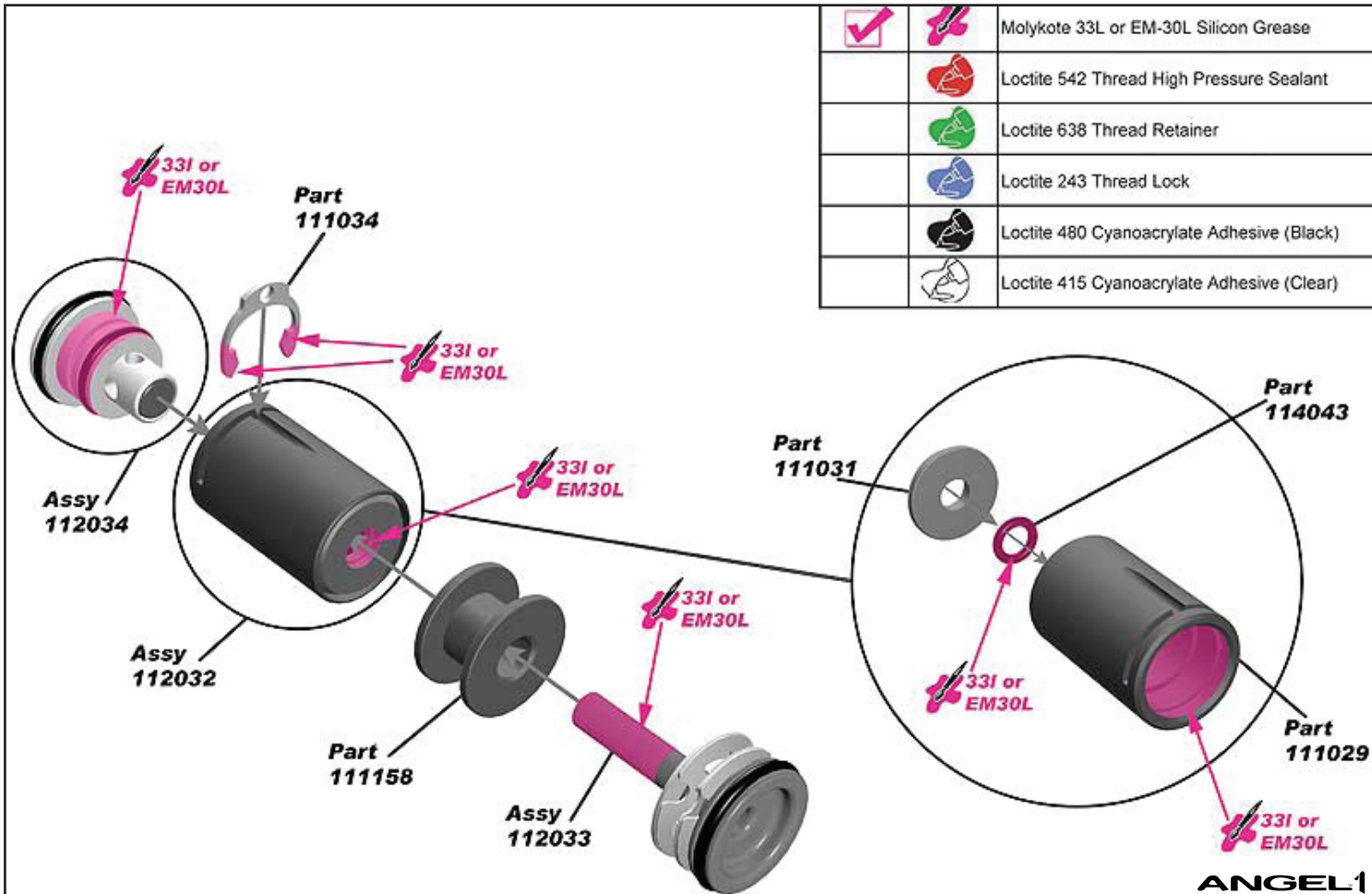
assembly & grease/thread lock application



		Molykote 33L or EM-30L Silicon Grease
		Loctite 542 Thread High Pressure Sealant
		Loctite 638 Thread Retainer
		Loctite 243 Thread Lock
		Loctite 480 Cyanoacrylate Adhesive (Black)
		Loctite 415 Cyanoacrylate Adhesive (Clear)

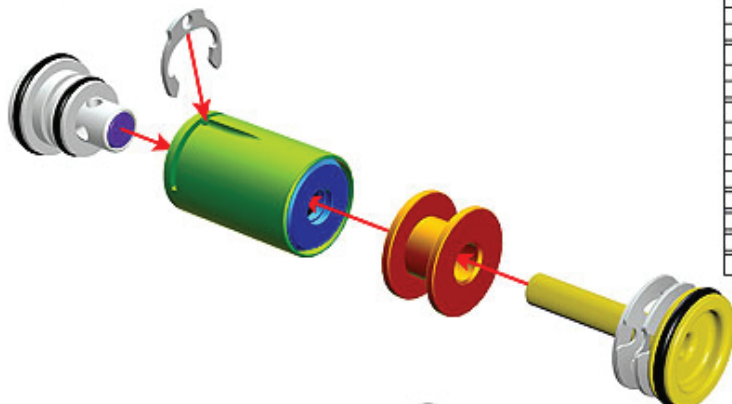


LPR grease/thread lock application

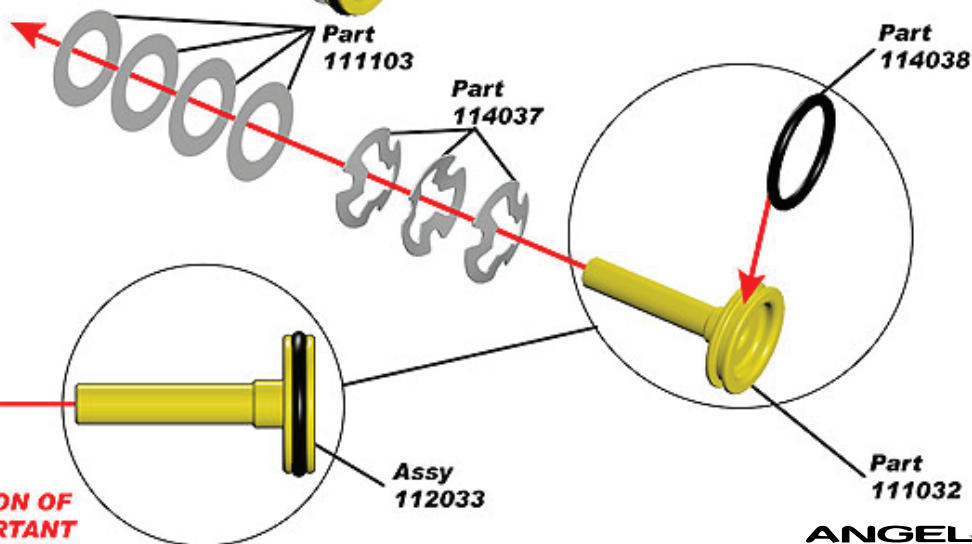


ANGEL

LPR assembly



112032	-	LPR Body Assembly	
	111029	LPR Body	1
	111031	LPR Washer	1
	114043	O' Ring 5.0 x 1.5mm NBR70	1
112033	-	LPR Piston Assembly	
	111032	LPR Piston	1
	114038	O' Rings BS015 NBR70	1
112034	-	LPR Spool Assembly	
	111030	LPR Spool	1
	111033	LPR Face Seal	1
	114038	O' Rings BS015 NBR70	1
	114044	O' Ring Small BS013 NBR70	1
	111103	Shims 0.005" Thick	4
	114037	Cloverdome Spring Washer	3
	111034	Spring Retaining Clip	1
	111158	LPR Spacer	1



Part 111103

Part 114037

Part 111103

Part 114037

Part 114038

Assy 112033

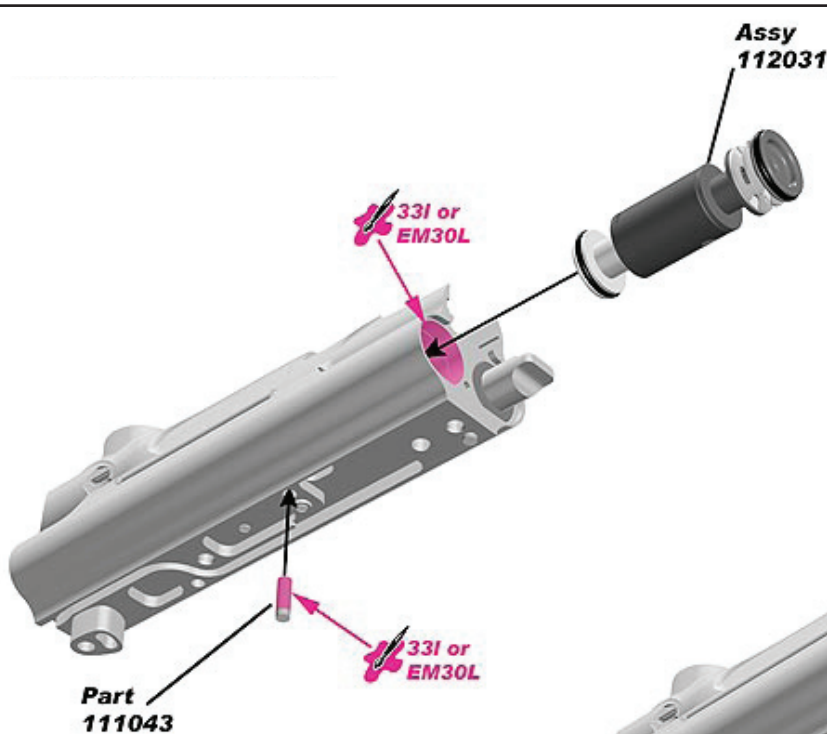
Part 111032

NOTE: ORIENTATION OF SPRINGS IS IMPORTANT

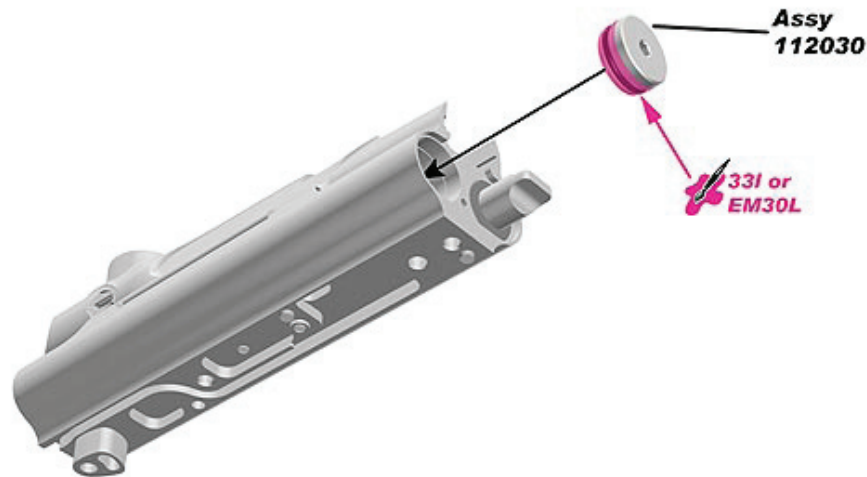
ANGEL1

LPR & LPR CHAMBER END PLUG

assembly & grease/thread lock application



		Molykote 33L or EM-30L Silicon Grease
		Loctite 542 Thread High Pressure Sealant
		Loctite 638 Thread Retainer
		Loctite 243 Thread Lock
		Loctite 480 Cyanoacrylate Adhesive (Black)
		Loctite 415 Cyanoacrylate Adhesive (Clear)



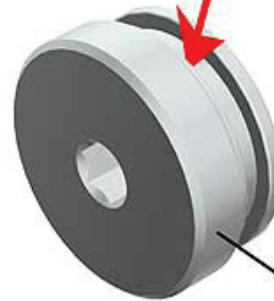
LPR CHAMBER END PLUG assembly



**Assy
112030**

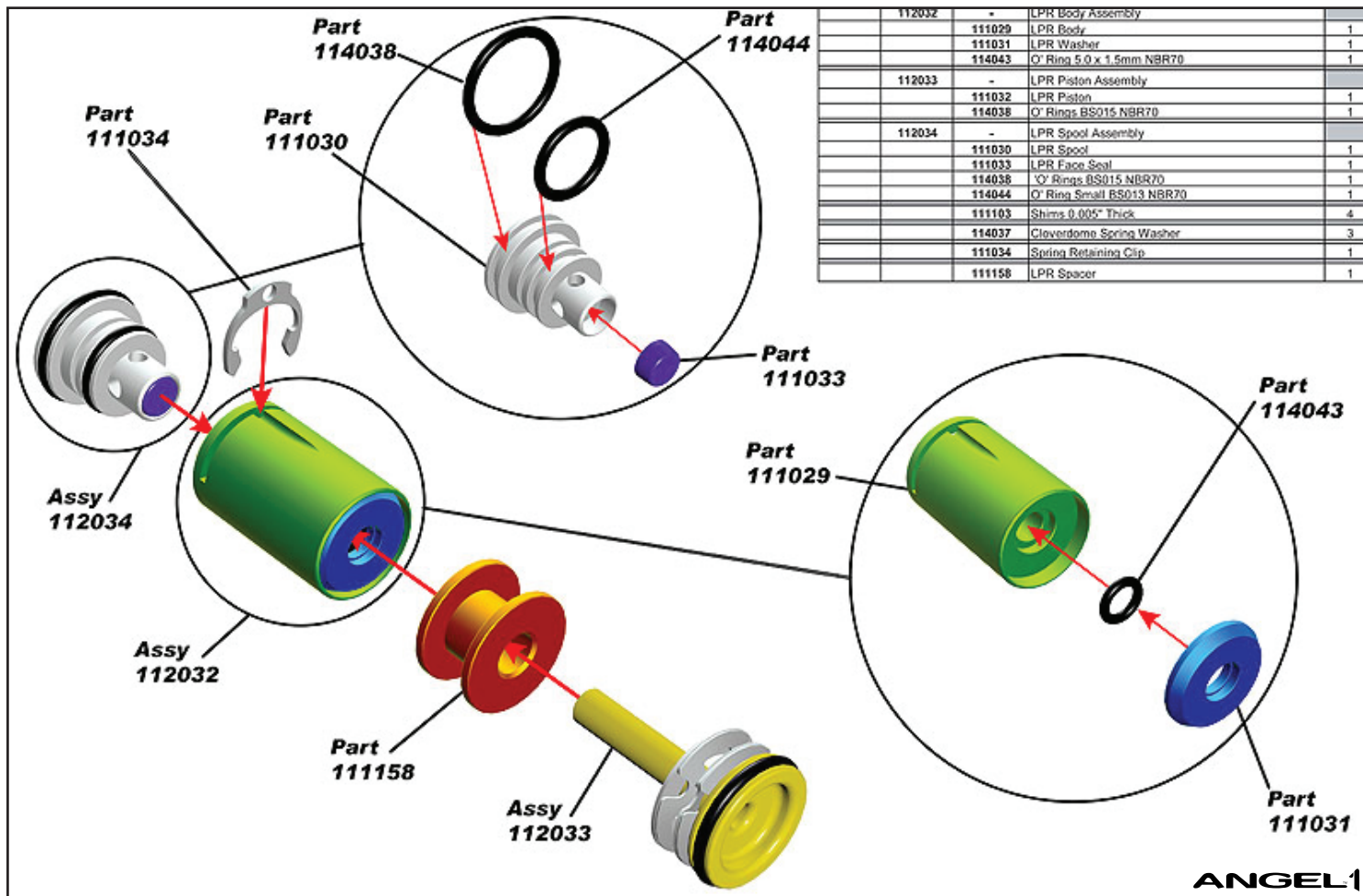


**Part
114038**



**Part
111035**

LPR assembly

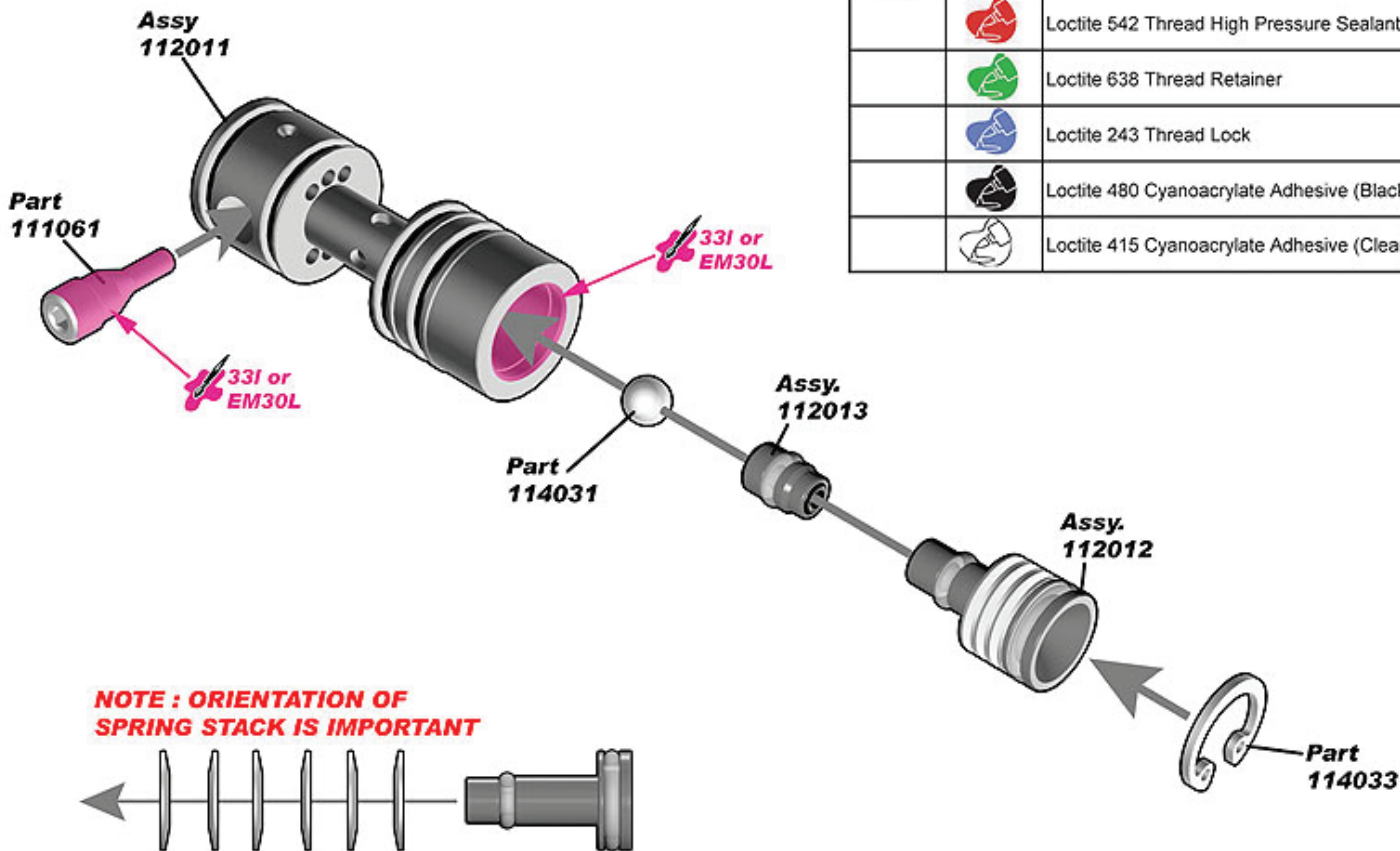


112032	-	LPR Body Assembly	
	111029	LPR Body	1
	111031	LPR Washer	1
	114043	O' Ring 5.0 x 1.5mm NBR70	1
112033	-	LPR Piston Assembly	
	111032	LPR Piston	1
	114038	O' Rings BS015 NBR70	1
112034	-	LPR Spool Assembly	
	111030	LPR Spool	1
	111033	LPR Face Seal	1
	114035	O' Rings BS015 NBR70	1
	114044	O' Ring Small BS013 NBR70	1
	111103	Shims 0.005" Thick	4
	114037	Cloverdome Spring Washer	3
	111034	Spring Retaining Clip	1
	111158	LPR Spacer	1

ANGEL1

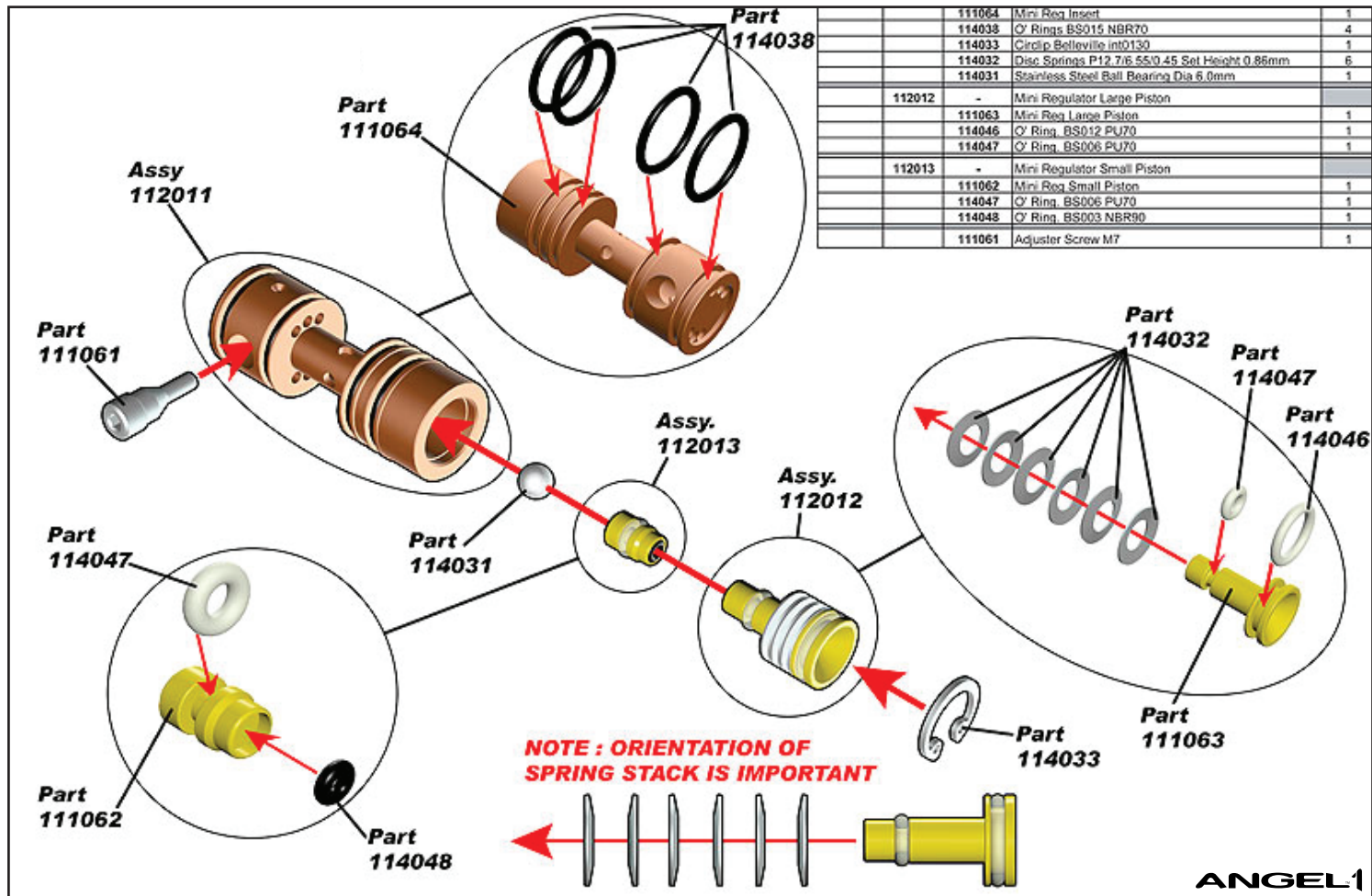
MINI REG INSERT

assembly & grease/thread lock application

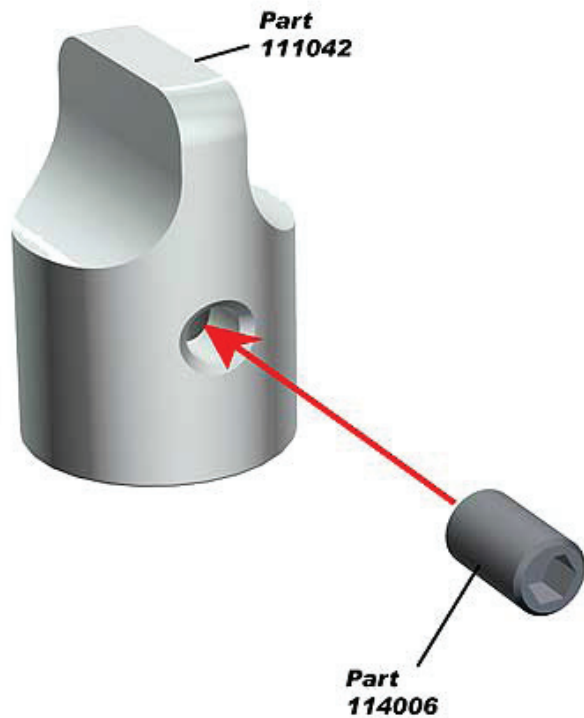


		Molykote 33L or EM-30L Silicon Grease
		Loctite 542 Thread High Pressure Sealant
		Loctite 638 Thread Retainer
		Loctite 243 Thread Lock
		Loctite 480 Cyanoacrylate Adhesive (Black)
		Loctite 415 Cyanoacrylate Adhesive (Clear)

MINI REG assembly

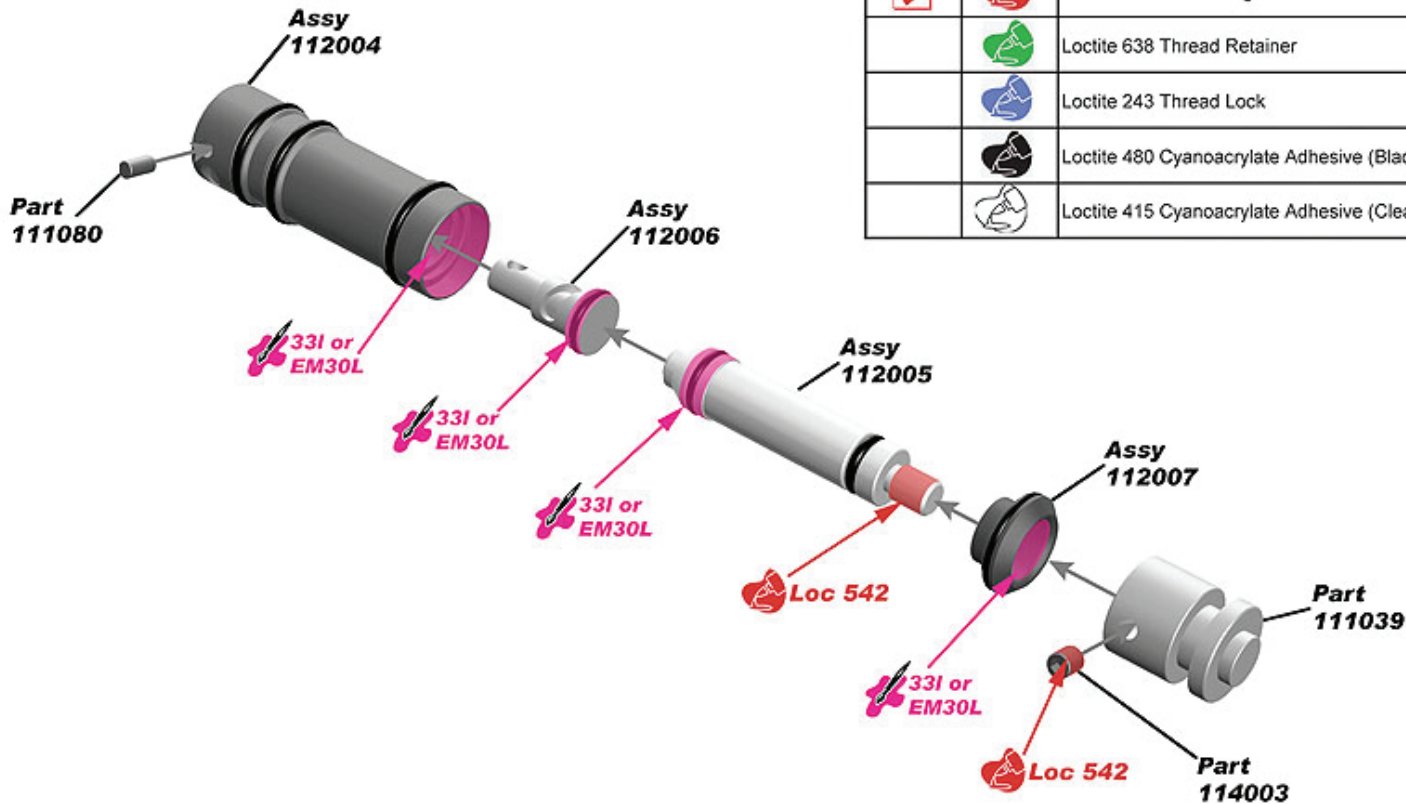


	111064	Mini Reg Insert	1
	114038	O Rings BS015 NBR70	4
	114033	Circlip Belleville int0130	1
	114032	Disc Springs P12 7/8 55/0 45 Set Height 0.86mm	6
	114031	Stainless Steel Ball Bearing Dia 6.0mm	1
	112012	- Mini Regulator Large Piston	
	111063	Mini Reg Large Piston	1
	114046	O Ring BS012 PU70	1
	114047	O Ring BS006 PU70	1
	112013	- Mini Regulator Small Piston	
	111062	Mini Reg Small Piston	1
	114047	O Ring BS006 PU70	1
	114048	O Ring BS003 NBR90	1
	111061	Adjuster Screw M7	1

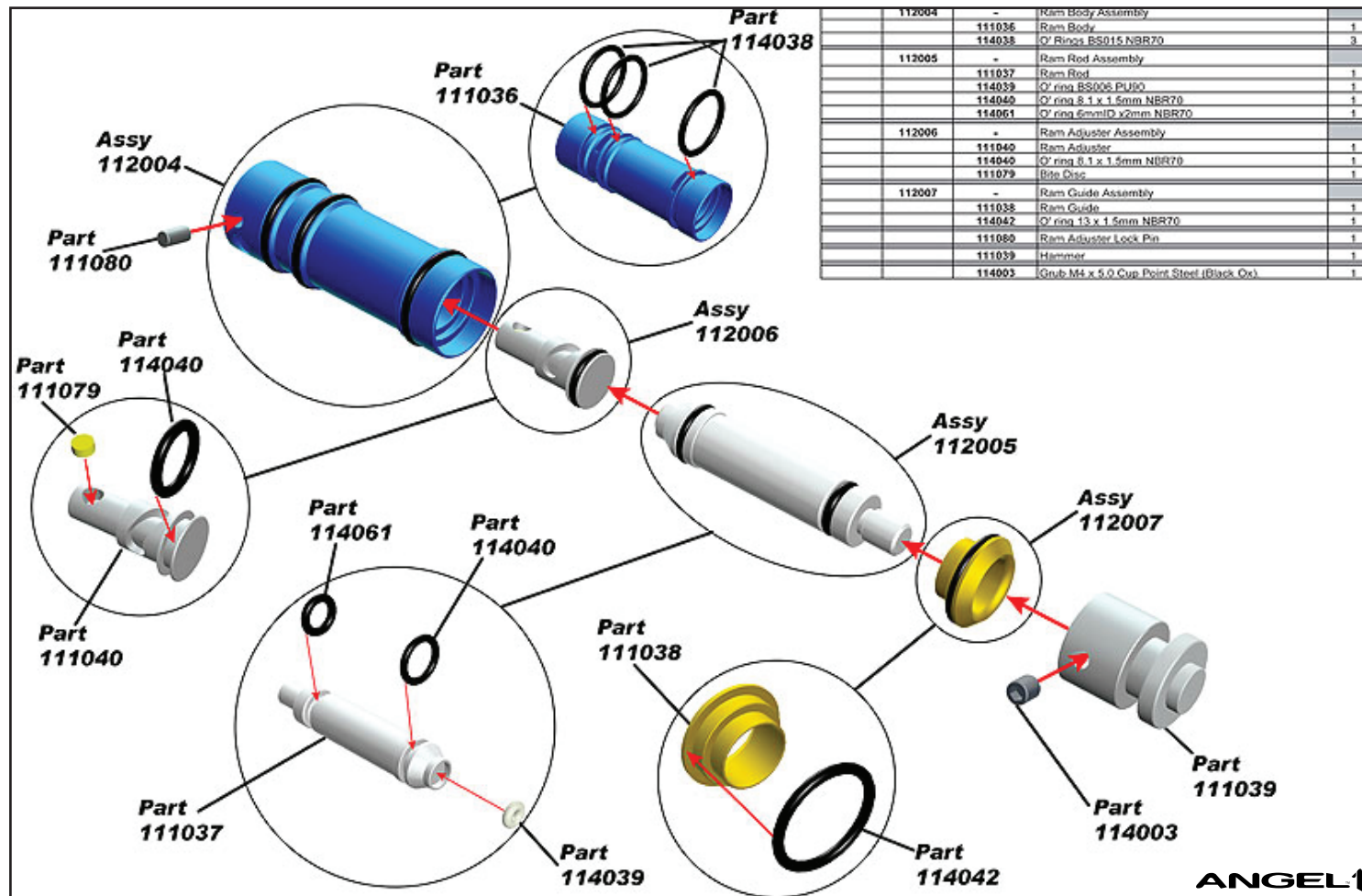


RAM

assembly & grease/thread lock application



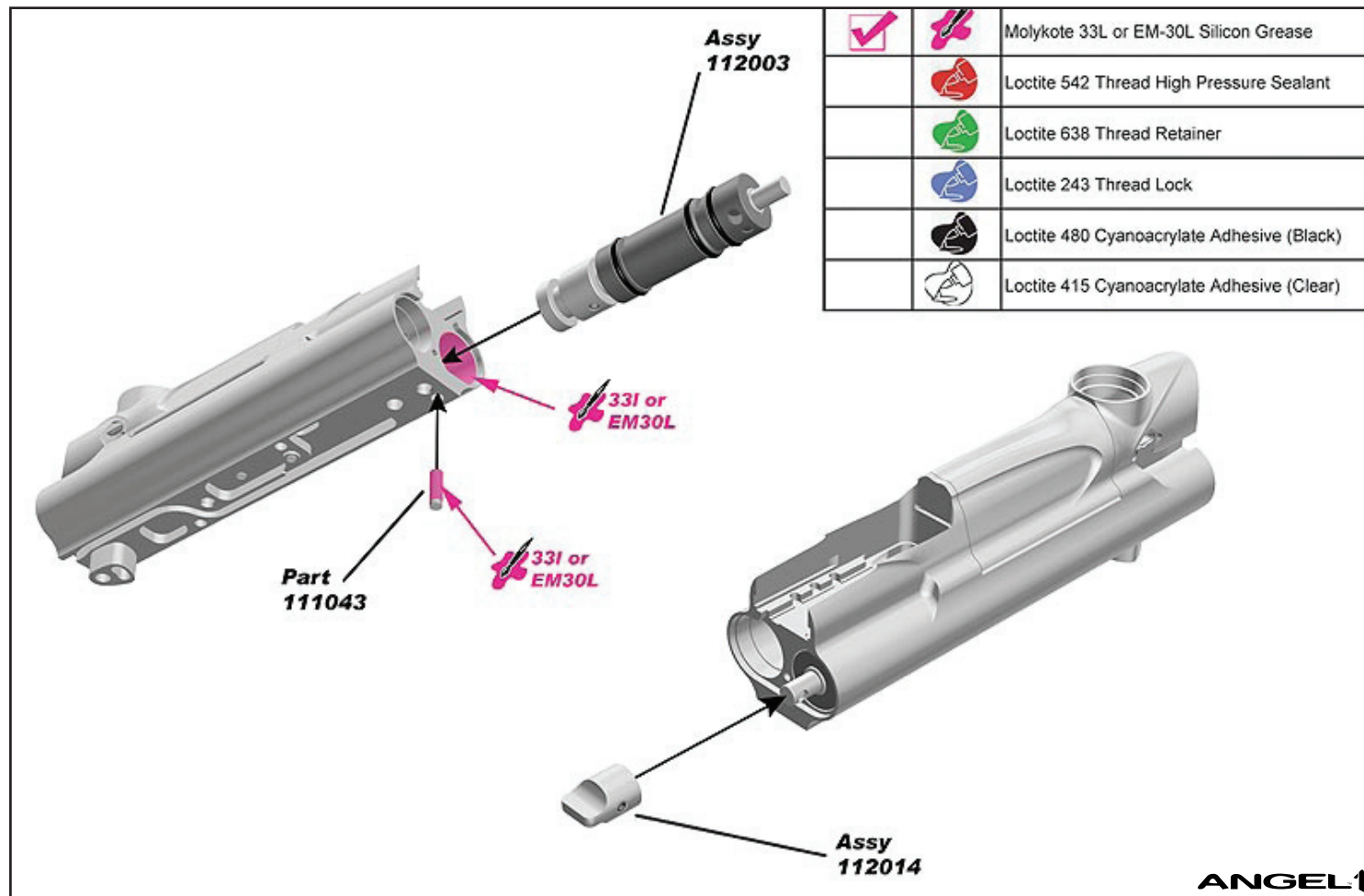
<input checked="" type="checkbox"/>		Molykote 33L or EM-30L Silicon Grease
<input checked="" type="checkbox"/>		Loctite 542 Thread High Pressure Sealant
		Loctite 638 Thread Retainer
		Loctite 243 Thread Lock
		Loctite 480 Cyanoacrylate Adhesive (Black)
		Loctite 415 Cyanoacrylate Adhesive (Clear)



112004	-	Ram Body Assembly	
	111036	Ram Body	1
	114038	O' Rings BS015 NBR70	3
112005	-	Ram Rod Assembly	
	111037	Ram Rod	1
	114039	O' ring BS006 PU90	1
	114040	O' ring 8.1 x 1.5mm NBR70	1
	114061	O' ring 6mmID x2mm NBR70	1
112006	-	Ram Adjuster Assembly	
	111040	Ram Adjuster	1
	114040	O' ring 8.1 x 1.5mm NBR70	1
	111079	Pin Disc	1
112007	-	Ram Guide Assembly	
	111038	Ram Guide	1
	114042	O' ring 13 x 1.5mm NBR70	1
	111080	Ram Adjuster Lock Pin	1
	111039	Hammer	1
	114003	Grub M4 x 5.0 Cup Point Steel (Black Ox)	1

RAM & ADJUSTER KNOB

assembly & grease/thread lock application

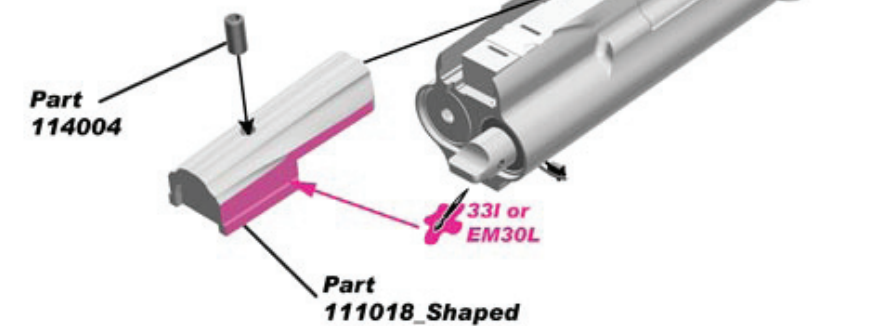
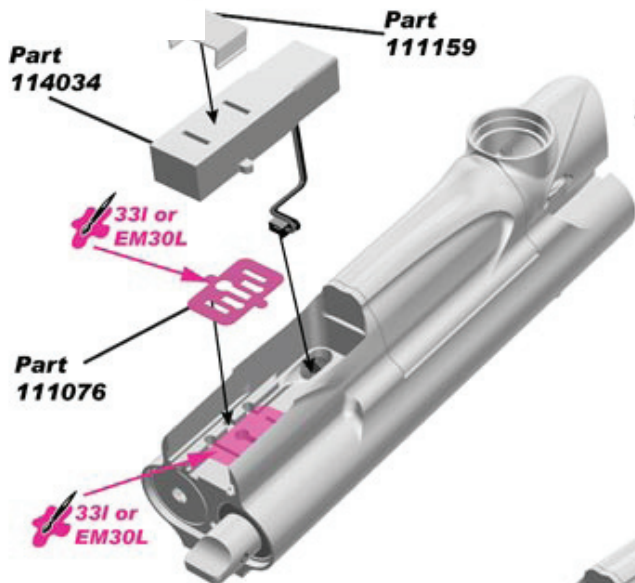


SOLENOID, SIGHT RAIL AND BACKPLATE

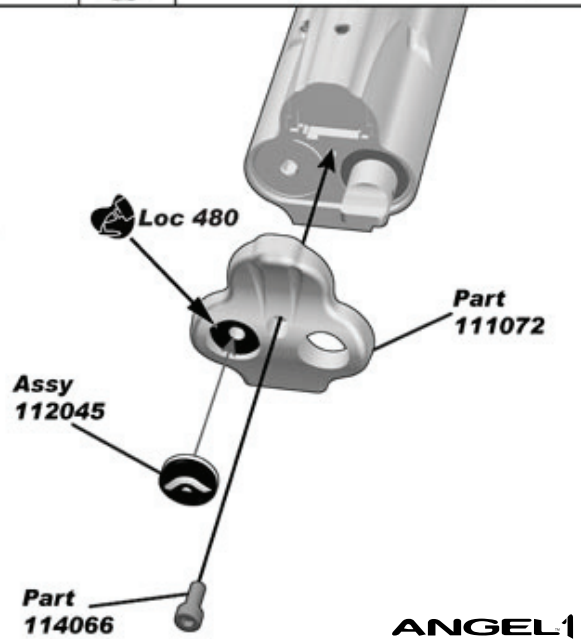
assembly & grease/thread lock application



ASSEMBLING SOLENOID, SIGHT RAIL AND BACKPLATE

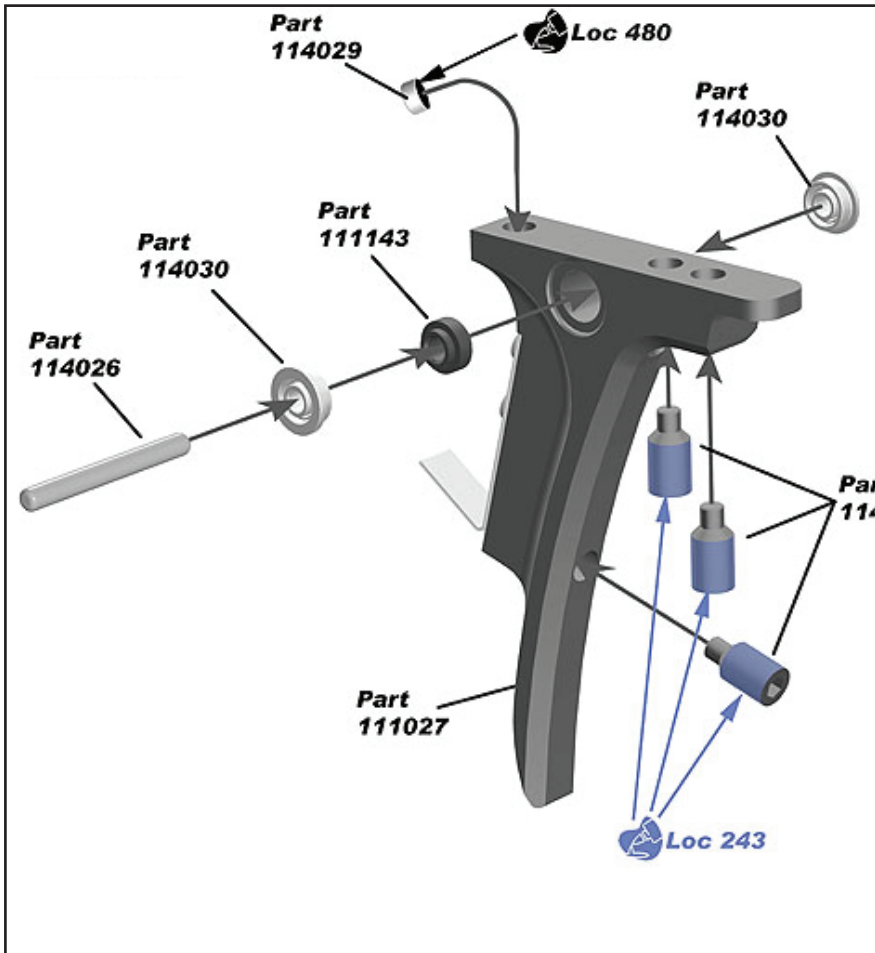


<input checked="" type="checkbox"/>		Molykote 33L or EM-30L Silicon Grease
<input type="checkbox"/>		Loctite 542 Thread High Pressure Sealant
<input type="checkbox"/>		Loctite 638 Thread Retainer
<input checked="" type="checkbox"/>		Loctite 243 Thread Lock
<input checked="" type="checkbox"/>		Loctite 480 Cyanoacrylate Adhesive (Black)
<input type="checkbox"/>		Loctite 415 Cyanoacrylate Adhesive (Clear)

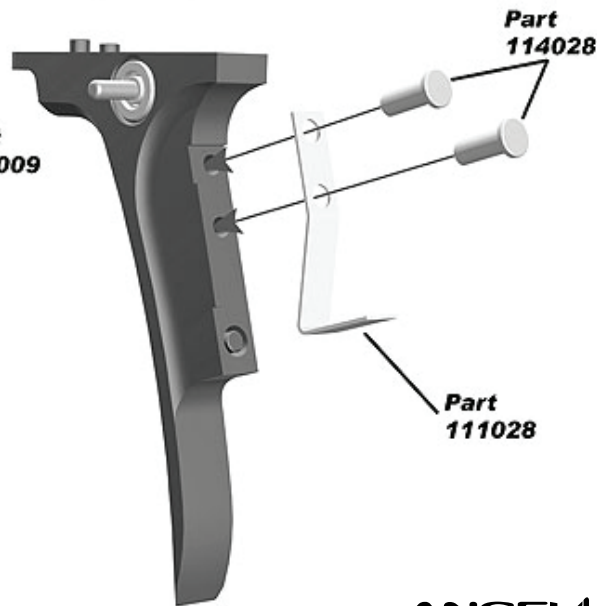


ANGEL1

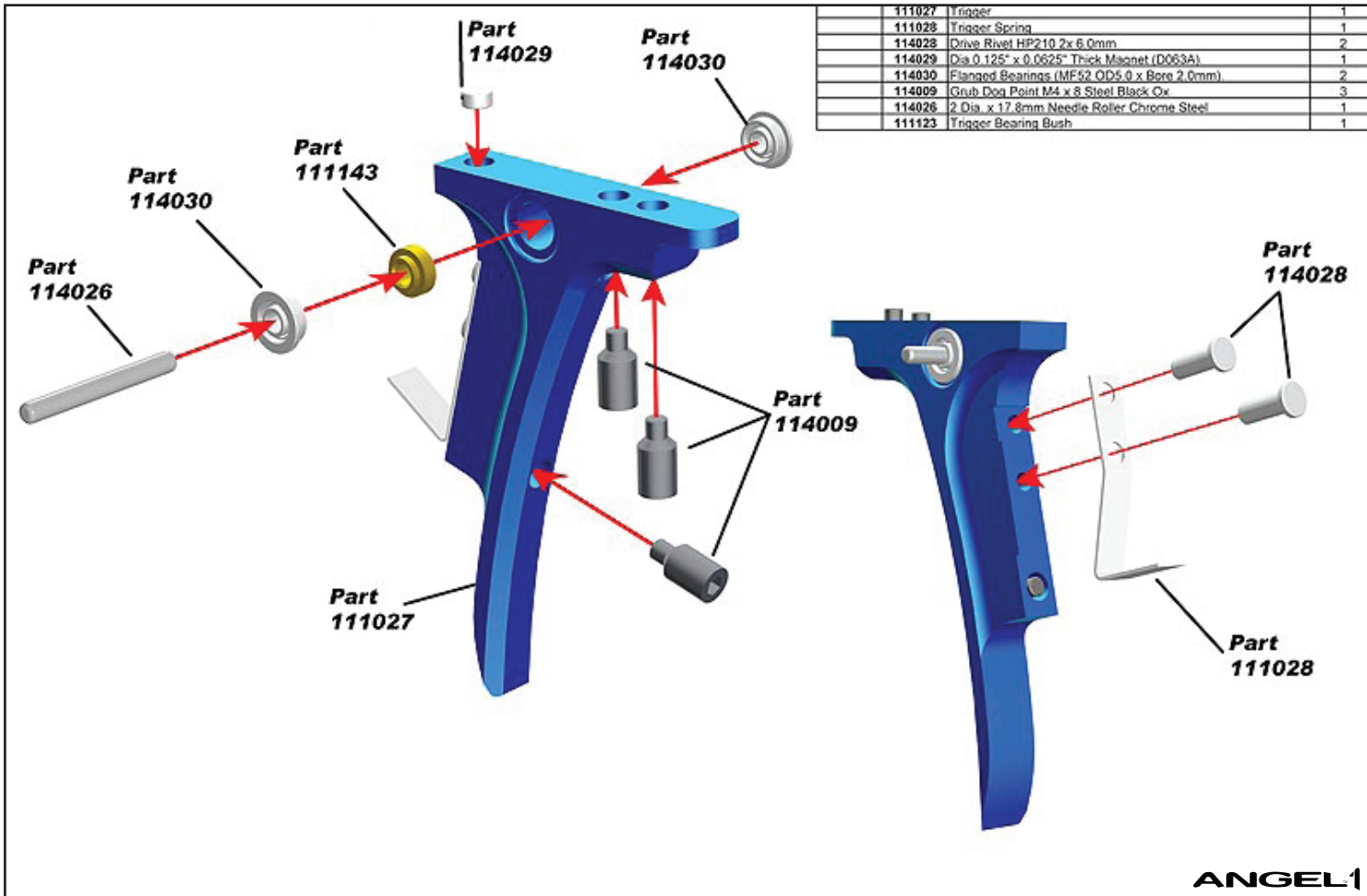
TRIGGER assembly



	Molykote 33L or EM-30L Silicon Grease
	Loctite 542 Thread High Pressure Sealant
	Loctite 638 Thread Retainer
<input checked="" type="checkbox"/>	Loctite 243 Thread Lock
<input checked="" type="checkbox"/>	Loctite 480 Cyanoacrylate Adhesive (Black)
	Loctite 415 Cyanoacrylate Adhesive (Clear)

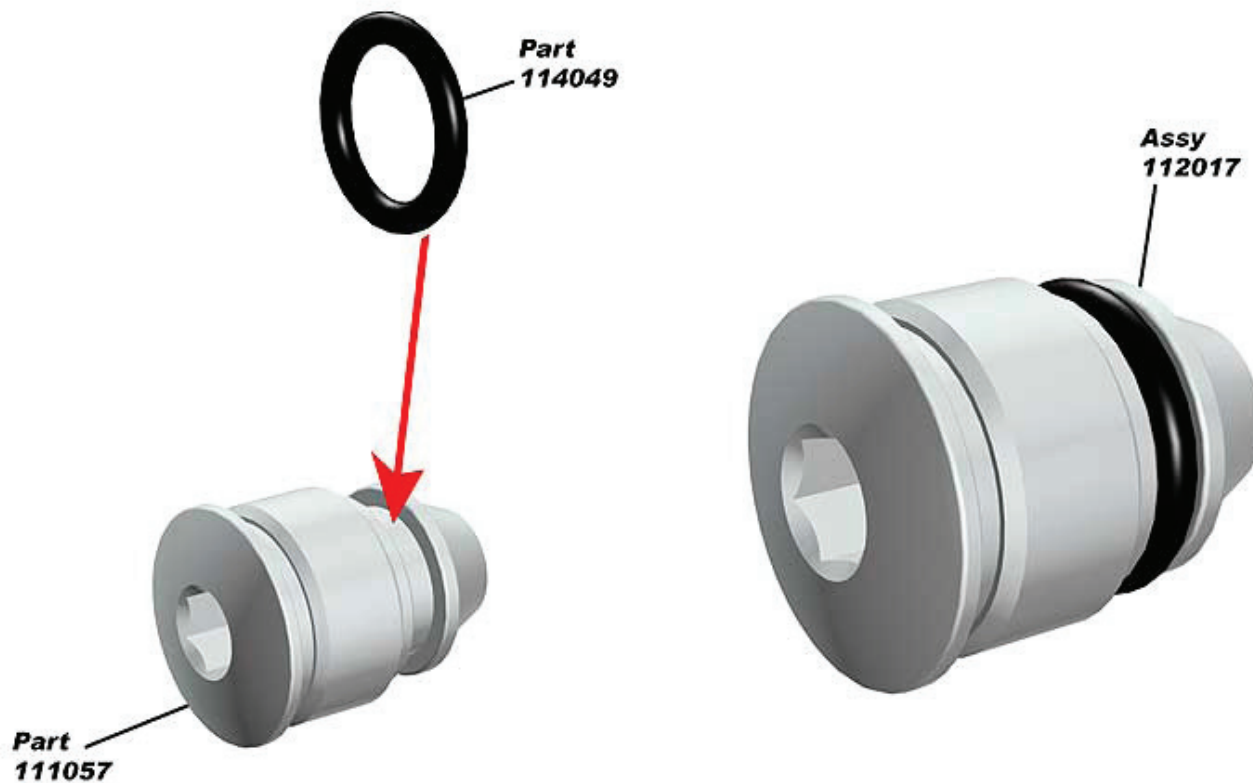


TRIGGER assembly



VOLUME CHAMBER MAINTENACE PLUG

assembly



VOLUME CHAMBER END PLUG

assembly

