

**ODYSSEY**



**WWW.ODYSSEY.TV**

# **Play Hard! Play Fast! Play Safe!**

**Always remember that to have fun with any paintball related device, you must keep SAFETY FIRST. Please read all SAFETY warnings and obey the local rules and guidelines of any paintball facilities you visit.**

## **WARRANTY INFORMATION**

ODYSSEY warrants for one (1) year that this paintball marker is free from defects in materials and workmanship. Disposable parts (batteries, o-rings, seals, etc.) are not included. This warranty does not cover surface damages (scratches and nicks), misuse, improper disassembly and re-assembly, attempts made to drill holes or remove metal from the external surfaces which could reduce the safety of the marker. Do not make changes to the basic marker parts without written approval. Paintball markers are non-refundable. This warranty is limited to repair or replacement of defective parts excluding shipping costs. Do not attempt to alter the trigger assembly in any way as this will void your ODYSSEY warranty and may result in serious injury.

## Introduction

Congratulations on your purchase of the **TORID™** paintball marker. This marker was designed for you, the avid paintball enthusiast. The **TORID™** Series offers the most advanced and desirable features along with options for future upgrades.

## Features

- **350-425 PSI Operating pressure**
- **SE™ – SE (Sensor Element) System™** US PAT #5,727,538 (included with the **TORID X™**, optional sensor kit available for use with **TORID™** type markers)
- **7.2 Volt NiMH Battery** – Rechargeable battery pack and charger included.
- **LCD user interface** – provides many software upgradeable features complete with tournament lockout. (advanced features and adjustments are available with the purchase of optional software package only.)
- **PB-Port™** - Power charging and Bandwidth data transfer in this single port.
- **Adjustable Regulator** – The regulator will provide appropriate air pressure that is user adjustable for controlling velocity.

## Getting Started

Carefully read all user notices placed on the device. See **labels** on Marker.

Using supplied wall charger, plug in to **PB-Port™**. A proper charge will be required to complete a full day of play. Charge **TORID™** with the supplied charger for at least 1 hour before you power it on for the first time.

## Introduction

### Air Sources

The TORID series of markers will work with both CO<sub>2</sub> and Compressed Air. Before connecting an air supply to the marker always **pull the bolt to the rear to cock**. This will prevent the valve from being held open when the air supply is turned on.

- CO<sub>2</sub> - On the TORID™, the tank must have an **anti-siphon** tube correctly installed. Liquid should not enter the paintball marker. **USE A CERTIFIED AIRSMITH TO INSTALL THE ANTI-SIPHON SYSTEM SPECIFICALLY FOR YOUR MARKER.** If not installed properly, CO<sub>2</sub> in liquid form will damage components of the TORID. Damage caused by the introduction of Liquid CO<sub>2</sub> will not be covered under warranty.
- Compressed Air – Compressed air is recommended for best results with your TORID™. The compressed air system must be able to provide adequate flow of air at 700 – 850 PSI. Fixed or adjustable regulator systems may also be utilized.

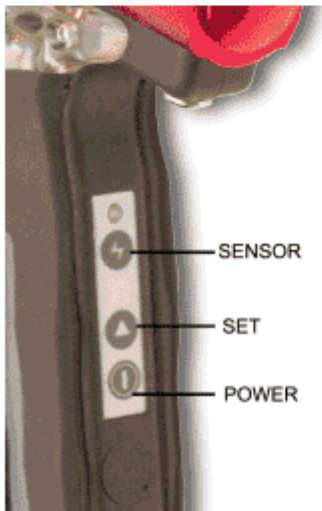
**ALWAYS USE AN INLINE OR OTHER SUITABLE REGULATOR TO ENSURE AN OPERATING PRESSURE OF 350 - 425 PSI.**

Odyssey recommends maintaining the factory dual regulator setup for optimal performance of your TORID™.

## Operating Instructions

Three buttons are used to control the electronic functions of the marker.

- 1) Sensor Button – Used to toggle the Sensors off and on
- 2) Set Button – Used to toggle between menus
- 3) Power Button - Press and hold 4 seconds to activate or deactivate the marker.



**WARNING**



ANY TIME YOU ARE IN A “VALUE CHANGE MODE” OR “ADVANCED SETTING MODE”, TORID WILL REMAIN **LIVE** AND WILL FIRE IF THE TRIGGER IS ACTUATED

**MAKE SURE YOU HAVE A BARREL BLOCKING DEVICE INSTALLED!**

## SETTING THE SAFETY ON

- Press and hold the **POWER** button four (4) seconds to turn the TORID **ON** or **OFF**.
- Press the **SET** button to go **ACTIVE**.
- **HOLD** the **SET** button for four (4) seconds to enter **SAFE** mode.

**The Display reads “SAFETY” when the SAFETY is ON.**

## Operating Instructions

### ACTIVE MENU

AUTO



BALL



MULTI



SEMI



To adjust ACTIVE MENU values:



to select the value you want to adjust



to enter "change value" mode



to change the value



to save the changes

AUTO = full auto firing

BALL = Burst Mode shot amount

MULTI= Cycle Rate for Burst mode

SEMI = semi-automatic mode

### **WARNING: SAFETY IS OFF IN THE ACTIVE MENU!**




**AUTO** – Automatic firing mode set from 4 to 20 BPS.

**BALL** – Burst Mode shot amount count setter with a preset cycle amount of 2 Bps. *BURST Shot count Adjustable from 2 to 10 shots.*

**MULTI** – Adjust Cyclic Rate for Burst modes using BALL setting to control shot count. With **RATE** selected, the initiation value is set to 10 bps. *RATE is adjustable from 2 to 20 BPS.*

**SEMI** – Traditional semi-automatic mode

## Operating Instructions

| SENSOR MENU  |  |
|--|--|
| <p>ON<br/><br/>AUTO<br/><br/>OFF<br/></p> | <p><b>TORID X ONLY:</b><br/>Press the SENSOR button until you see the mode you wish to use.<br/>ON = Sensor active - ball present to fire<br/>AUTO = full auto mode - anti-chop feature<br/>OFF = Sensor off.<br/>Note: When sensor is ON or AUTO and there are no paintballs loaded the TORID X will fire at a rate of 1 ball per second.</p> |

ON – Sensor Element is on to detect properly loaded paintballs prior to letting the TORID X™ initiate a firing sequence.

AUTO – For use with Firing Mode Only. Sensor Element is on to detect properly loaded paintballs and the firing computer will differentiate when the sensor resets after the ball is fired and the next ball is loaded. A one second delay is initiated if the sensor does not detect a ball in the breech and the gun is being fired.

**NOTE** – When sensor is in the ON or AUTO modes and there is no sensor installed in the marker (TORID™) or there are no paintballs loaded in the marker, TORID™ will only fire at a 1 BPS rate.

OFF – Sensor Element is deactivated. The TORID will not look for a properly loaded paintball before firing.

## Operating Instructions

### ADVANCED MENU

COUNTER



TIMER



RATE



SPEED



GAUGE



CHARGER



POWER



SENSOR



ALERT



SETTING RESET



PRESS POWER BUTTON  
TWICE to enter the  
ADVANCED MENU.

To adjust ADVANCED MENU values:



to select the value you want to adjust



to enter "change value" mode



to change the value



to save the changes

COUNTER = how many shots fired

TIMER = countdown timer

RATE = cyclic rate of last shot string

SPEED = not used in TORID series

GAUGE = not used in TORID series

CHARGE = current battery voltage

POWER = select power save features

SENSOR = select sensor mode

ALERT = not used in TORID series

SETTING RESET = DO NOT SELECT  
unless you have a DATA CABLE to  
reload settings!!

COUNTER– This trip counter displays the number of times a firing sequence has been activated with the power on.

- To reset the counter press the *set button*.
- Pressing the *POWER button* (bar marking) to return to desired mode.
- Note - the counter will reset when the marker is powered down.



## Operating Instructions

TIMER – Timer counts down from 1 to 99 minutes and displays minutes and seconds.

- Setting the timer – press the *set button* (triangle marking) to increment the timer to the desired time.

To activate the timer – Press the *operation button* to return to the desired mode. The timer will be displayed with the current chosen mode and will be counting down.

RATE – When selected, this indication will show the cyclic rate of the last string of paintballs shot consistently from the marker.

SPEED – Auxiliary feature (future use)

GAUGE - Auxiliary feature (future use)

CHARGE – Allows you to check the current charge on you battery pack.

POWER – Allows you to select the type of power feature.

Once the POWER feature is displayed, the feature parameter can be changed by pressing the *set button*.

- AUTO – Shuts marker down after **20 minutes** with no user input.
- SAVE – Turns display off after **20 minutes** to conserve energy. The power indicator light will blink when the display is turned off to show the marker is still **LIVE!** The display will only appear again when one of the control panel's buttons are pressed.

CONT – Continuous enables the LCD display to be active during the entire time the marker is on.

## Operating Instructions

### Operating Pressure Adjustments

**WARNING – DO NOT adjust your TORID™ operating pressure any higher than 500 psi.**

Operating pressure adjustments are made by using the inline regulator included with your TORID™.

The operating pressure should be set between **350 – 425 psi.**

- Increasing the pressure on your regulator – Use the included **HEX** tool to turn the adjusting nut. **IN** or clockwise (if viewing from the front). Watch the input pressure gauge supplied on the side of your regulator to get the desired setting.
- Decreasing the pressure – Turn adjusting nut **OUT** or counterclockwise. When decreasing the pressure the indicator gauge will not drop. *The marker must be fired to relieve this pressure before an accurate reading can be achieved.*
- Internal damage may occur to the components or the regulator systems and you may void your warranty.
- Always recheck the velocity of the gun when adjusting operating pressures.



**WARNING**



**When FIRING your marker always wear appropriate eye protection!**

## Tournament Lock Out Mode

(TORID X™ only)

To adjust your marker using the tournament lockout mode you must access the inside of the grip.

1. Remove the screws located on the LCD side of the grip panel and lift up the grip.
2. Select semi-auto mode.
3. In the lower forward corner of the circuit board you will locate the Jumper. (Not included with TORID™)
4. Remove the jumper and reinstall with only one pin attached.
5. Replace screws in reinstalled grip to close. Ensure no wires have become pinched when putting grip back on marker.

**NOTE – When in tournament mode, the marker will only fire in semi-auto mode only. Your LCD Features will be limited.**

Your TORID X™ is now locked in SEMI only mode and is ready for tournament play.

## Maintenance



### WARNING



**BEFORE ANY MAINTENANCE IS PERFORMED ON YOUR TORID SERIES MARKER IT MUST BE CLEAR OF PAINTBALLS AND MUST NOT HAVE AN AIRSOURCE CONNECTED!**

### Lubricating the bolt

Your TORID™ is equipped with a hard-anodized bolt equipped with sealing rings. The stock bolt is designed to reduce friction while maintaining maximum efficiency. ODYSSEY also manufactures an aftermarket Dehin™ bolt (see your Dealer for more information) for the TORID SERIES. To ensure TORID™ fires properly, the bolt must be lubricated and kept clean. If the surface becomes sticky follow these simple instructions.

- Remove bolt and clean thoroughly with a dry cloth. Soap and warm water may be used to remove contaminants.
- Dry thoroughly while making sure the pin's spring locking system works freely.
- The pin's spring lock system should be oiled to ensure it is acting correctly. **NOTE** - Do this very lightly while minimizing the amount of oils on the bolt itself.
- Clean bore of marker with squeegee and ensure no contaminants are present.
- Replace lubricated bolt in marker and check movement. Bolt should now move freely in the bore.

## Maintenance



## Maintenance

### Lubricating the hammer

To remove the hammer assembly for cleaning and maintenance:

- 1) Remove the air system and hopper.
- 2) Remove the pin running horizontally through the rear of the body while **holding your finger across both bores at the rear of the gun**. **Note – The bolt and hammer carrier group are spring-loaded and may eject if not restrained properly.**
- 3) Remove Bolt/Hammer carrier group as one piece from the rear of the marker.
- 4) While paying close attention to the way the components were removed, disassemble the mechanism for cleaning.
- 5) The front of the **TORID™** hammer is equipped with a one-way sealing ring to provide for optimal blow back performance. Ensure this ring and the rest of the hammer is clean and free of contaminants. Replace ring if excessive wear is visible.
- 6) Oil lightly (**ONLY** use paintball specific oils and lubricants) and reassemble pieces as they were when they were removed.
- 7) Clean inside of both upper and lower bores of marker body to ensure both are free and clean of contaminants.
- 8) Slide the assembly into the respective chambers. Note – Hammer face will stop on sear that is extended up through the lower portion of the lower chamber. To move the hammer forward the sear must be manually lowered. Open the LCD side of the grip panel and push the rear of the solenoid plate forward while applying a slight pressure to the rear plug of the firing assembly. The Bolt/Hammer assembly should move forward. Repeat the process to move hammer past the standard cocked position.

Once bolt/hammer group is in forward position, reinstall rear plug and **field strip retention pin**.

Most contaminants found while participating in the sport of paintball can be cleaned using a simple water alcohol mix. This mixture will dissolve dirt and paint while evaporating quickly and without leaving residue.

## Troubleshooting

TORID will not turn on.

Hold the Power button for more than 4 seconds.

Charge the battery for at least one hour.

Make sure battery is connected properly

TORID will not fire.

If sensors are on ball needs to be present – is your loader turned on?

Battery voltage is too low to fire.  
Charge battery

Solenoid may be out of place, open grip and press solenoid forward.

Air leak from barrel area

Usually barrel leaks are due to lack of lubrication. Drop some oil into valve area. If this does not fix it the cup seal is worn and needs to be replaced or the valve o-rings need to be replaced.

Air leak from volumizer area

Tighten properly or replace o-ring

Air leak from hose fittings

Make sure hose fittings are properly tightened and/or seal with thread sealant.

## Troubleshooting

TORID will not re-cock

Air pressure is too low. Operating pressure is 350-425 PSI.

Charge the battery – voltage is too low.

Lubricate the Sealing Ring on the Hammer.

Check for wear on the sealing ring, it may need to be replaced.

Hammer or Sear is worn and needs to be replaced by Odyssey Service or a certified air smith.

TORID is breaking paintballs out the barrel

Air pressure is too high. Adjust the operating pressure to 350-425 PSI.

TORID is chopping paintballs in the breach

Ball detent is excessively worn or dirty and may need to be replaced.

TORID ONLY: Your loader is not feeding fast enough – turn your cycle rates down.

TORID X ONLY: make sure the sensors are turned ON.

Check that the sensors are clean from debris or paint.

Battery voltage is low – charge battery.



## Safety First!



WARNING



### **Paintball markers are not toys!**

Misuse or careless use can cause *serious injury* or *death*.

**ANY** person located in the range of an actively used paintball marker must wear **eye protection** that is approved and designed for paintball use.

Read the operation manual.

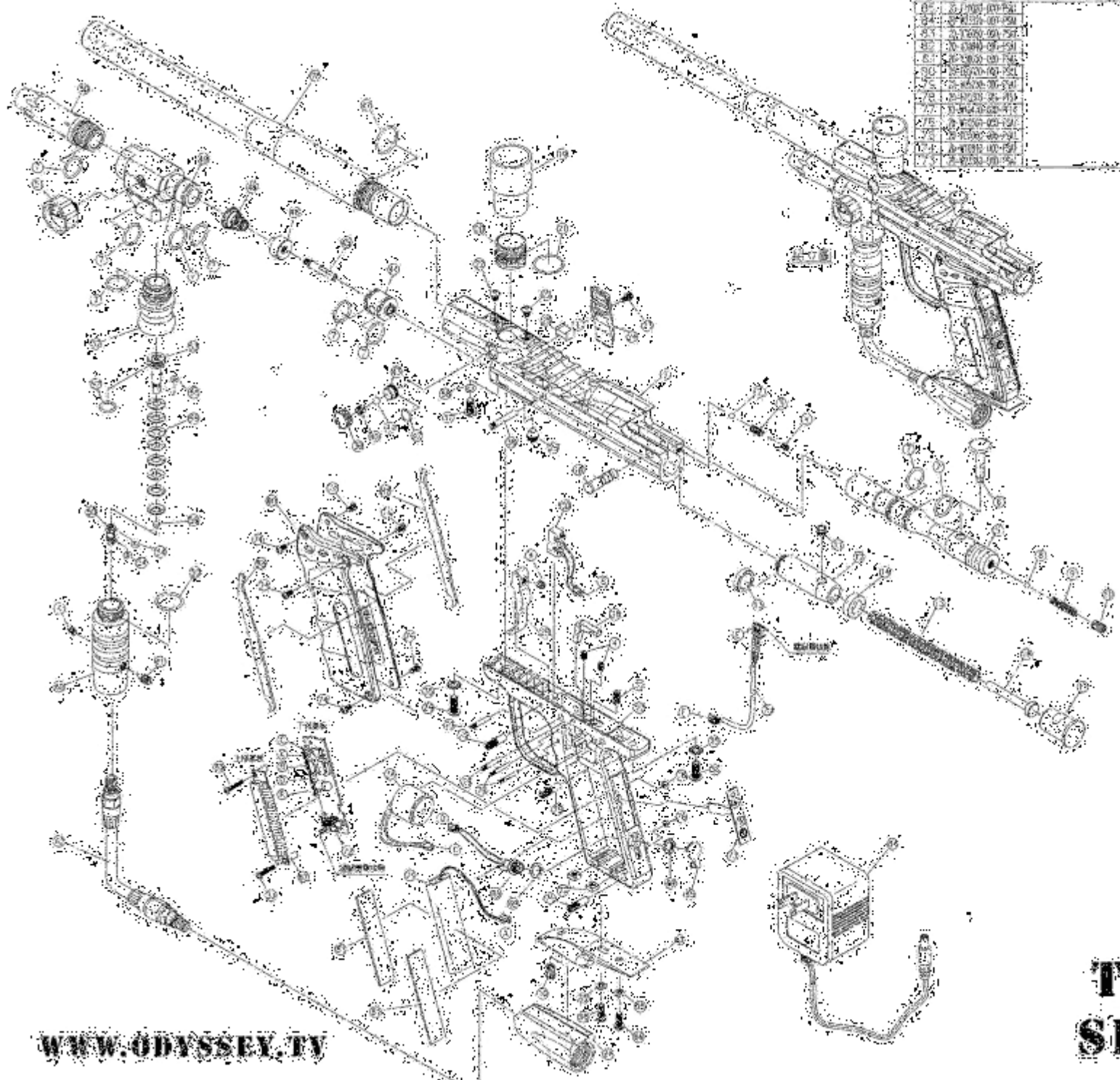
Always use a barrel blocking device.

Always ensure the marker is not pointed at anyone when it is being handled outside the confines of an actual paintball game and where proper **eye protection** is being used.

It is recommended to be at least 18 Years of age to purchase. Children 14 or under should only use paintball markers under adult supervision or on paintball fields meeting ASTM standard F1777-97.

|     |               |
|-----|---------------|
| 64  | 2-1100-00-751 |
| 65  | 2-1100-00-752 |
| 66  | 2-1100-00-753 |
| 67  | 2-1100-00-754 |
| 68  | 2-1100-00-755 |
| 69  | 2-1100-00-756 |
| 70  | 2-1100-00-757 |
| 71  | 2-1100-00-758 |
| 72  | 2-1100-00-759 |
| 73  | 2-1100-00-760 |
| 74  | 2-1100-00-761 |
| 75  | 2-1100-00-762 |
| 76  | 2-1100-00-763 |
| 77  | 2-1100-00-764 |
| 78  | 2-1100-00-765 |
| 79  | 2-1100-00-766 |
| 80  | 2-1100-00-767 |
| 81  | 2-1100-00-768 |
| 82  | 2-1100-00-769 |
| 83  | 2-1100-00-770 |
| 84  | 2-1100-00-771 |
| 85  | 2-1100-00-772 |
| 86  | 2-1100-00-773 |
| 87  | 2-1100-00-774 |
| 88  | 2-1100-00-775 |
| 89  | 2-1100-00-776 |
| 90  | 2-1100-00-777 |
| 91  | 2-1100-00-778 |
| 92  | 2-1100-00-779 |
| 93  | 2-1100-00-780 |
| 94  | 2-1100-00-781 |
| 95  | 2-1100-00-782 |
| 96  | 2-1100-00-783 |
| 97  | 2-1100-00-784 |
| 98  | 2-1100-00-785 |
| 99  | 2-1100-00-786 |
| 100 | 2-1100-00-787 |

|     |               |
|-----|---------------|
| 70  | 2-1100-00-750 |
| 71  | 2-1100-00-751 |
| 72  | 2-1100-00-752 |
| 73  | 2-1100-00-753 |
| 74  | 2-1100-00-754 |
| 75  | 2-1100-00-755 |
| 76  | 2-1100-00-756 |
| 77  | 2-1100-00-757 |
| 78  | 2-1100-00-758 |
| 79  | 2-1100-00-759 |
| 80  | 2-1100-00-760 |
| 81  | 2-1100-00-761 |
| 82  | 2-1100-00-762 |
| 83  | 2-1100-00-763 |
| 84  | 2-1100-00-764 |
| 85  | 2-1100-00-765 |
| 86  | 2-1100-00-766 |
| 87  | 2-1100-00-767 |
| 88  | 2-1100-00-768 |
| 89  | 2-1100-00-769 |
| 90  | 2-1100-00-770 |
| 91  | 2-1100-00-771 |
| 92  | 2-1100-00-772 |
| 93  | 2-1100-00-773 |
| 94  | 2-1100-00-774 |
| 95  | 2-1100-00-775 |
| 96  | 2-1100-00-776 |
| 97  | 2-1100-00-777 |
| 98  | 2-1100-00-778 |
| 99  | 2-1100-00-779 |
| 100 | 2-1100-00-780 |
| 101 | 2-1100-00-781 |
| 102 | 2-1100-00-782 |
| 103 | 2-1100-00-783 |
| 104 | 2-1100-00-784 |
| 105 | 2-1100-00-785 |
| 106 | 2-1100-00-786 |
| 107 | 2-1100-00-787 |
| 108 | 2-1100-00-788 |
| 109 | 2-1100-00-789 |
| 110 | 2-1100-00-790 |
| 111 | 2-1100-00-791 |
| 112 | 2-1100-00-792 |
| 113 | 2-1100-00-793 |
| 114 | 2-1100-00-794 |
| 115 | 2-1100-00-795 |
| 116 | 2-1100-00-796 |
| 117 | 2-1100-00-797 |
| 118 | 2-1100-00-798 |
| 119 | 2-1100-00-799 |
| 120 | 2-1100-00-800 |
| 121 | 2-1100-00-801 |
| 122 | 2-1100-00-802 |
| 123 | 2-1100-00-803 |
| 124 | 2-1100-00-804 |
| 125 | 2-1100-00-805 |
| 126 | 2-1100-00-806 |
| 127 | 2-1100-00-807 |
| 128 | 2-1100-00-808 |
| 129 | 2-1100-00-809 |
| 130 | 2-1100-00-810 |
| 131 | 2-1100-00-811 |
| 132 | 2-1100-00-812 |
| 133 | 2-1100-00-813 |
| 134 | 2-1100-00-814 |
| 135 | 2-1100-00-815 |
| 136 | 2-1100-00-816 |
| 137 | 2-1100-00-817 |
| 138 | 2-1100-00-818 |
| 139 | 2-1100-00-819 |
| 140 | 2-1100-00-820 |
| 141 | 2-1100-00-821 |
| 142 | 2-1100-00-822 |
| 143 | 2-1100-00-823 |
| 144 | 2-1100-00-824 |
| 145 | 2-1100-00-825 |
| 146 | 2-1100-00-826 |
| 147 | 2-1100-00-827 |
| 148 | 2-1100-00-828 |
| 149 | 2-1100-00-829 |
| 150 | 2-1100-00-830 |
| 151 | 2-1100-00-831 |
| 152 | 2-1100-00-832 |
| 153 | 2-1100-00-833 |
| 154 | 2-1100-00-834 |
| 155 | 2-1100-00-835 |
| 156 | 2-1100-00-836 |
| 157 | 2-1100-00-837 |
| 158 | 2-1100-00-838 |
| 159 | 2-1100-00-839 |
| 160 | 2-1100-00-840 |
| 161 | 2-1100-00-841 |
| 162 | 2-1100-00-842 |
| 163 | 2-1100-00-843 |
| 164 | 2-1100-00-844 |
| 165 | 2-1100-00-845 |
| 166 | 2-1100-00-846 |
| 167 | 2-1100-00-847 |
| 168 | 2-1100-00-848 |
| 169 | 2-1100-00-849 |
| 170 | 2-1100-00-850 |
| 171 | 2-1100-00-851 |
| 172 | 2-1100-00-852 |
| 173 | 2-1100-00-853 |
| 174 | 2-1100-00-854 |
| 175 | 2-1100-00-855 |
| 176 | 2-1100-00-856 |
| 177 | 2-1100-00-857 |
| 178 | 2-1100-00-858 |
| 179 | 2-1100-00-859 |
| 180 | 2-1100-00-860 |
| 181 | 2-1100-00-861 |
| 182 | 2-1100-00-862 |
| 183 | 2-1100-00-863 |
| 184 | 2-1100-00-864 |
| 185 | 2-1100-00-865 |
| 186 | 2-1100-00-866 |
| 187 | 2-1100-00-867 |
| 188 | 2-1100-00-868 |
| 189 | 2-1100-00-869 |
| 190 | 2-1100-00-870 |
| 191 | 2-1100-00-871 |
| 192 | 2-1100-00-872 |
| 193 | 2-1100-00-873 |
| 194 | 2-1100-00-874 |
| 195 | 2-1100-00-875 |
| 196 | 2-1100-00-876 |
| 197 | 2-1100-00-877 |
| 198 | 2-1100-00-878 |
| 199 | 2-1100-00-879 |
| 200 | 2-1100-00-880 |



WWW.ODYSSEY.TV

**TORID  
SERIES**



# **ODYSSEY**

3850 Marquis Drive, Garland, Texas, 75042

Tel: 972-494-2500

Fax: 972-494-2522

Online: [www.odyssey.tv](http://www.odyssey.tv)