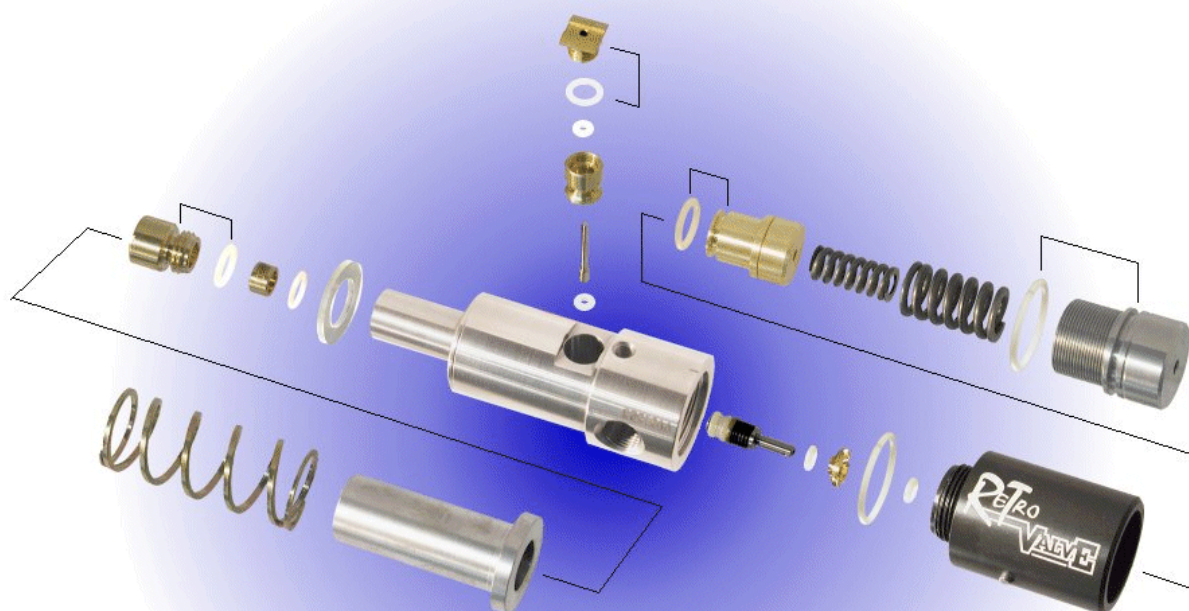


# RETRO VALVE

## Retro Valve Exploded View

Click on any part for a larger view and description



RETRO VALVE

Part #843  
Regulator Valve Pin Assembly



The Regulator Pin comes as an assembly. Just push it in place and it should be good to go. If you have problems with this part call the factory.

[Order Online Now!](#)

Back to Top

## Part #844 Regulator Seat O-Ring



The Regulator Seat O-ring is the business end of the regulator. Replace it if you are having problems with velocity. Two are included in the [Parts Kit](#).

[Order Online Now!](#)

[Back to Top](#)

Part #841  
Regulator Seat Holder

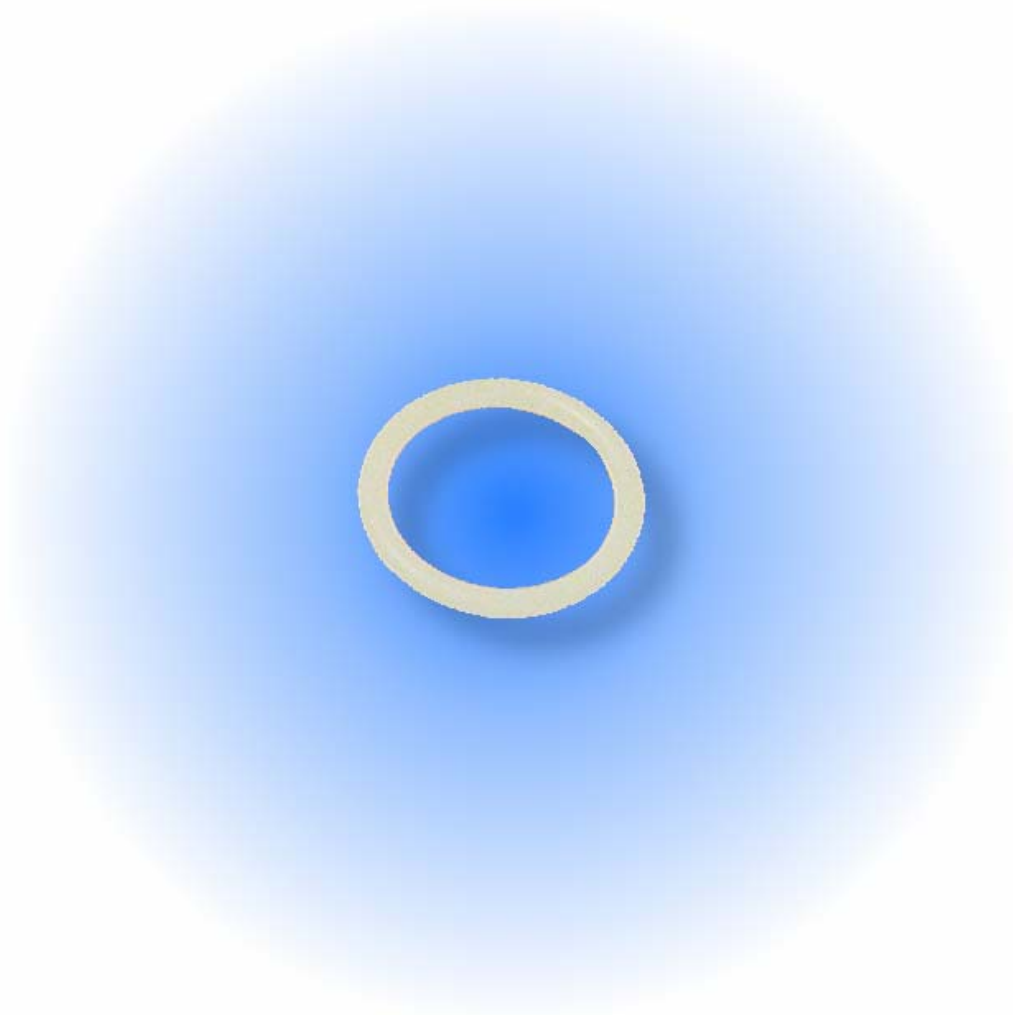


The Regulator Seat Holder holds the O-ring that acts as the regulator seal.

[Order Online Now!](#)

Back to Top

Part #115  
Regulator Body O-Ring



The Reg. Body O-Ring seals the two halves of the Valve Body together. Included in the [Parts Kit](#).

[Order Online Now!](#)

Back to Top

Part #779  
Regulator Valve Pin O-Ring/  
(On Off O-Ring)



Four of these desogrin O-rings are used in the Retro Valve, two as part of the regulator valve pin assembly, one on the On/Off Pin and one in the face of the regulator body. Four included in the [Parts Kit](#) .

[Order Online Now!](#)

[Back to Top](#)

Part #796  
Bumper – RT



This clear urethane washer sits at the base of your power tube. When the bolt returns, it hits this to decelerate. This bumper is a little softer than the standard blue bumper for the higher firing rate of the Retro Valve. The bumper should be replaced about once a year. One Included in the [Parts Kit](#).

[Order Online Now!](#)

Back to Top

Part #123  
Power Tube O-Ring  
(On Off Bottom O-Ring)



A common size O-ring in the marker. It's a good idea to have spares on hand. Included in the [Parts Kit](#) Used in the Power Tube and the On/Off assembly.

[Order Online Now!](#)

Back to Top



Part #736  
Power Tube Spacer .220

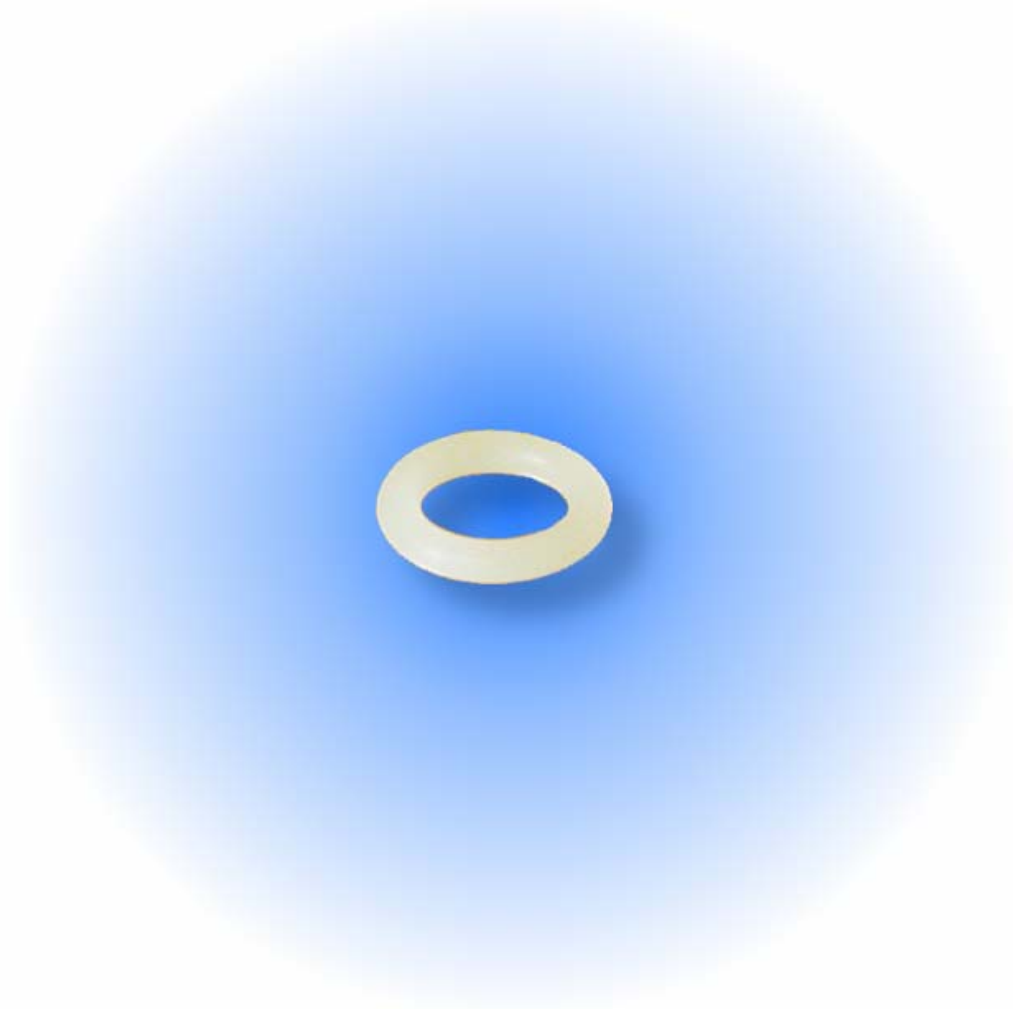


The spacers are sold as a kit so you get several sizes. You need to swap them until you find the best size for your particular marker.  
Follow the link below to go to the spacer kits.

[Order Online Now!](#)

[Back to Top](#)

Part #781  
Power Tube Tip O-Ring



This O-ring keeps the Power Tube Tip from loosening up.

[Order Online Now!](#)

Back to Top

Part #826  
Regulator Nut/RT



The Regulator Nut screws into the back of the valve and adjusts the velocity. Keep the threads lubricated with a good grease.

[Order Online Now!](#)

Back to Top

Part #157  
Regulator Nut O-Ring/Barrel O-Ring



This is the same O-Ring used on most AGD barrels.  
Keeps the Regulator Nut in place.

[Order Online Now!](#)

[Back to Top](#)

Part #800  
Regulator Spring /Outer



The Retro Valve uses two coil springs behind the Regulator Piston. This is the larger of the two. Should never need replacing, just keep it greased.

[Order Online Now!](#)

Back to Top

Part #818  
Power Tube Tip



This item screws into the end of the Power Tube and is a precision part. It releases the air blast behind the ball in a controlled manner so the air hits the ball with low pressure to gently accelerate it out the barrel. Use a coin to tighten it up.

[Order Online Now!](#)

Back to Top

Part #799  
Regulator Spring /Inner



This is the smaller of the two springs that go behind the Regulator Piston. These springs assemble one inside the other.

[Order Online Now!](#)

Back to Top

Part #822  
Regulator Piston Assembly



The Regulator Piston comes as an assembly that has a built-in blow off valve. Do not disassemble! Replace this part when air is venting out the back of the marker and you are shooting less than 300 FPS.

[Order Online Now!](#)

[Back to Top](#)



Part #113  
Regulator Piston O-Ring



This O-ring goes around the Regulator Piston and is a wear item. Extras are found in the [Parts Kit](#) for a better value. Replace when the marker has erratic velocity problems and you have tried everything else.

[Order Online Now!](#)

Back to Top

Part #815  
On Off Bottom

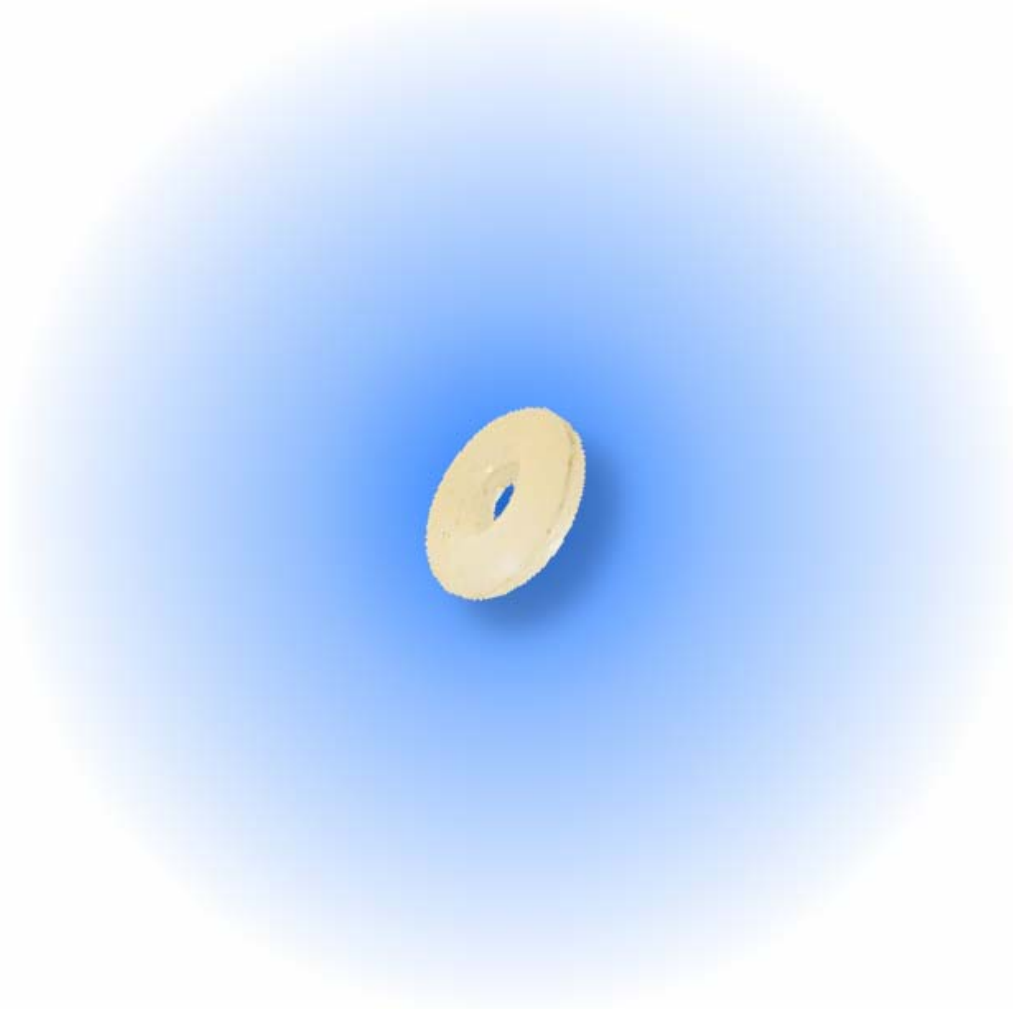


On/Off Bottom is the lower half of the assembly. It screws into the On/Off Top.

[Order Online Now!](#)

Back to Top

Part #778  
On Off Small O-Ring



This urethane O-ring goes inside the On/Off Top.  
Included in the [Parts Kit](#).

[Order Online Now!](#)

[Back to Top](#)

Part #814  
On Off Top



This is the top part in the On/Off Assembly. The On/Off small urethane O-ring sits inside.

[Order Online Now!](#)

[Back to Top](#)

Part #1083  
On Off Pin .750



The Retro Valve On/Off Pin has a large head which makes it different from the Standard Valve. This feature contributes to the Reactive Trigger of the Retro Valve.

[Order Online Now!](#)

[Back to Top](#)

## Part #802 Bolt-Foamieless



Bolts from AGD are made from hardened stainless for extra long life. They come in three different types:

1. Hard Nose: all stainless construction including the tip that pushes on the paintball. Get this one if you don't want to fool around with replacing stuff.
2. Foamie: a small foam rubber cushion is glued to the front of the bolt to softly push your paintballs into the barrel. Good if you play a lot in cold weather. The foamies do wear off and need to be replaced with superglue.
3. Superbolt: not shown here, it is a different product (see link below). The superbolt is for people who want the highest level of performance and the smoothest shooting marker possible. This bolt is about half the weight of the normal all stainless bolt shown here because it has a lightweight Delrin sleeve.

[Order Online Now!](#)

[Back to Top](#)

## Part #798 Bolt Spring



The Bolt Spring fits all AGD markers regardless of age or type. They are made from very special square wire so they don't fold inside themselves when collapsed. Replace your old springs when they sag below the front of the bolt. Special honed bolt springs come with Superbolts to prevent premature wear. One spring also comes in the. [Parts Kit](#). If you need any O-rings, the kit is a good value.

[Order Online Now!](#)

[Back to Top](#)

Part #1103  
Retro Valve Package



Because we laser engrave matching serial numbers on each half of the Valve Assembly, you can't buy just one half of a Valve Assembly. This is a complete Valve Assembly with warranty!

[Order Online Now!](#)

[Back to Top](#)



[www.airgun.com](http://www.airgun.com)  
[www.automags.org](http://www.automags.org)  
[Airgun-UK](http://Airgun-UK)

Email to: [office@airgun.com](mailto:office@airgun.com)

**Office hours:**  
**9:00 am - 5:00 pm**  
**(Central Time)**  
**Monday through Friday**  
**Office Tel: (847) 520-7507**  
**Office Fax: (847) 520-7848**

---

**Tech Support hours:**  
**10:00 am to 11:30 am,**  
**1:00 pm - 4:00 pm**  
**(Central Time)**  
**Monday through Friday**

**Tech Support Tel:**  
**(847) 520-7225**



Back to Top